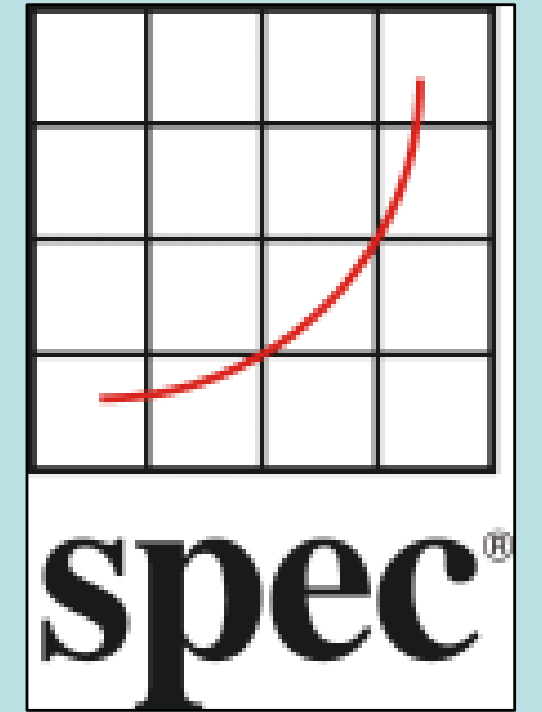


SPEC SOA

Measuring Performance of Applications based on Service Oriented Architectures



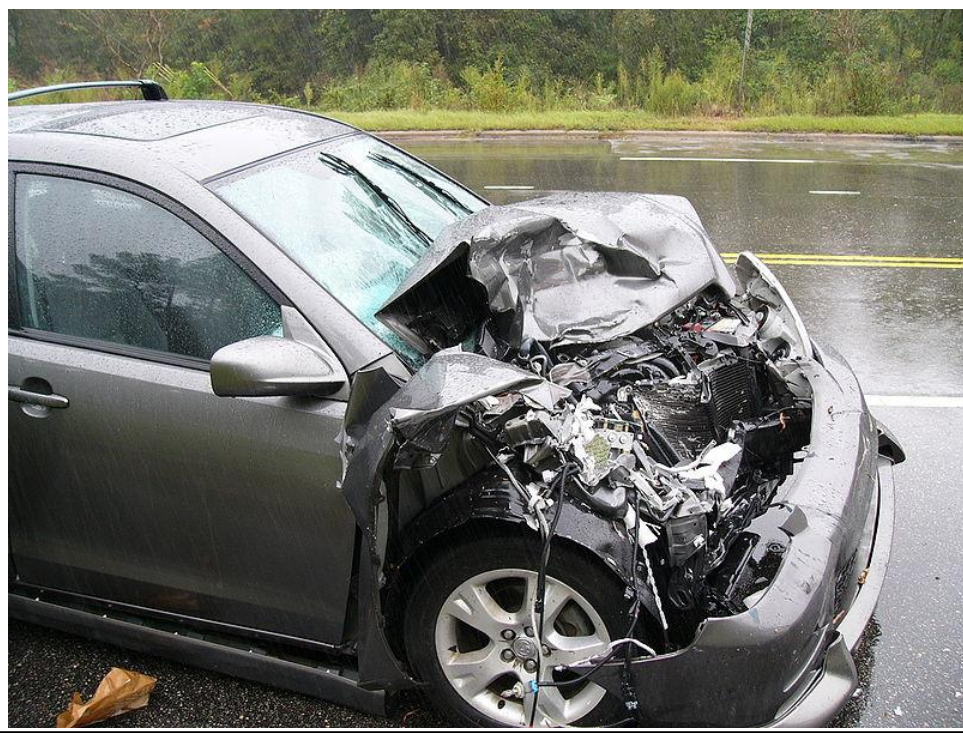
New SPEC group developing SOA-based application benchmark

WARRENTON, Va., September 9, 2009 — The Standard Performance Evaluation Corp. (SPEC) has formed a new working group to develop standard methods of measuring performance for typical middleware, database and hardware deployments of applications based on the Service Oriented Architecture (SOA).

Working Group Members



Representation by consumers of SOA technology as well



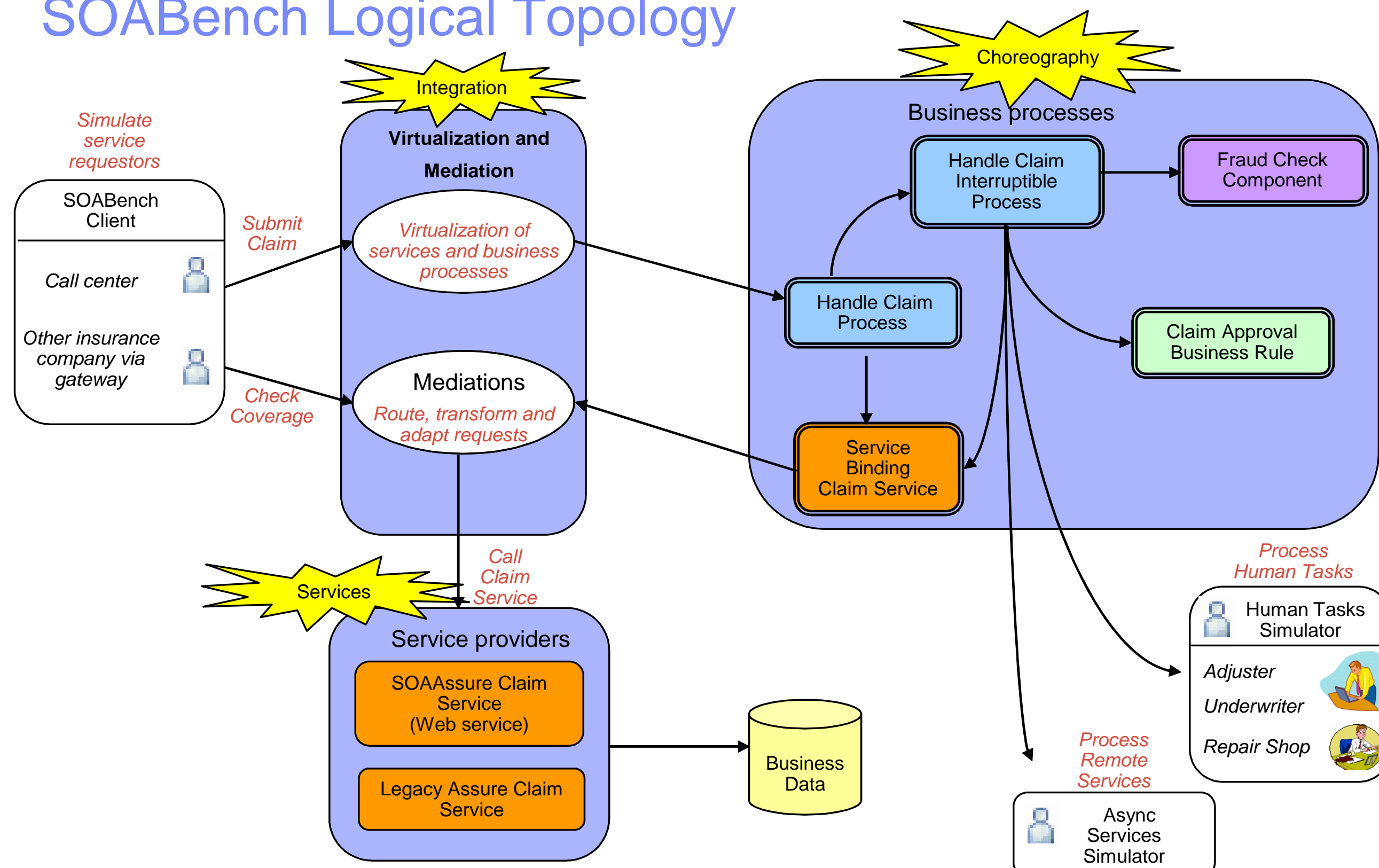
SOAAssure, a motor insurance company

- Claims Services
- Call Center Claims Application (BPM)
- Third Party Gateway (ESB)

The benchmark is designed around three parts of a typical SOA deployment infrastructure:

1. Services on top of application servers using web services;
2. [Enterprise Service Bus \(ESB\)](#) technologies that connect and mediate the services; and
3. Choreographing services into larger composite applications through [BPEL \(Business Process Execution Language\)](#) technologies.

SOABench Logical Topology



What's Next ?

Technical Deep Dives
Quality of Service Working Sessions
SPEC SOA Bench-a-thon
Metrics Discussions



Benchmarking Subcommittee