



SPEC® CINT2006 Result

Copyright 2006-2017 Standard Performance Evaluation Corporation

Dell Inc.

PowerEdge M640 (Intel Xeon Platinum 8176, 2.10 GHz)

SPECint®2006 = 79.4

SPECint_base2006 = 76.4

CPU2006 license: 55

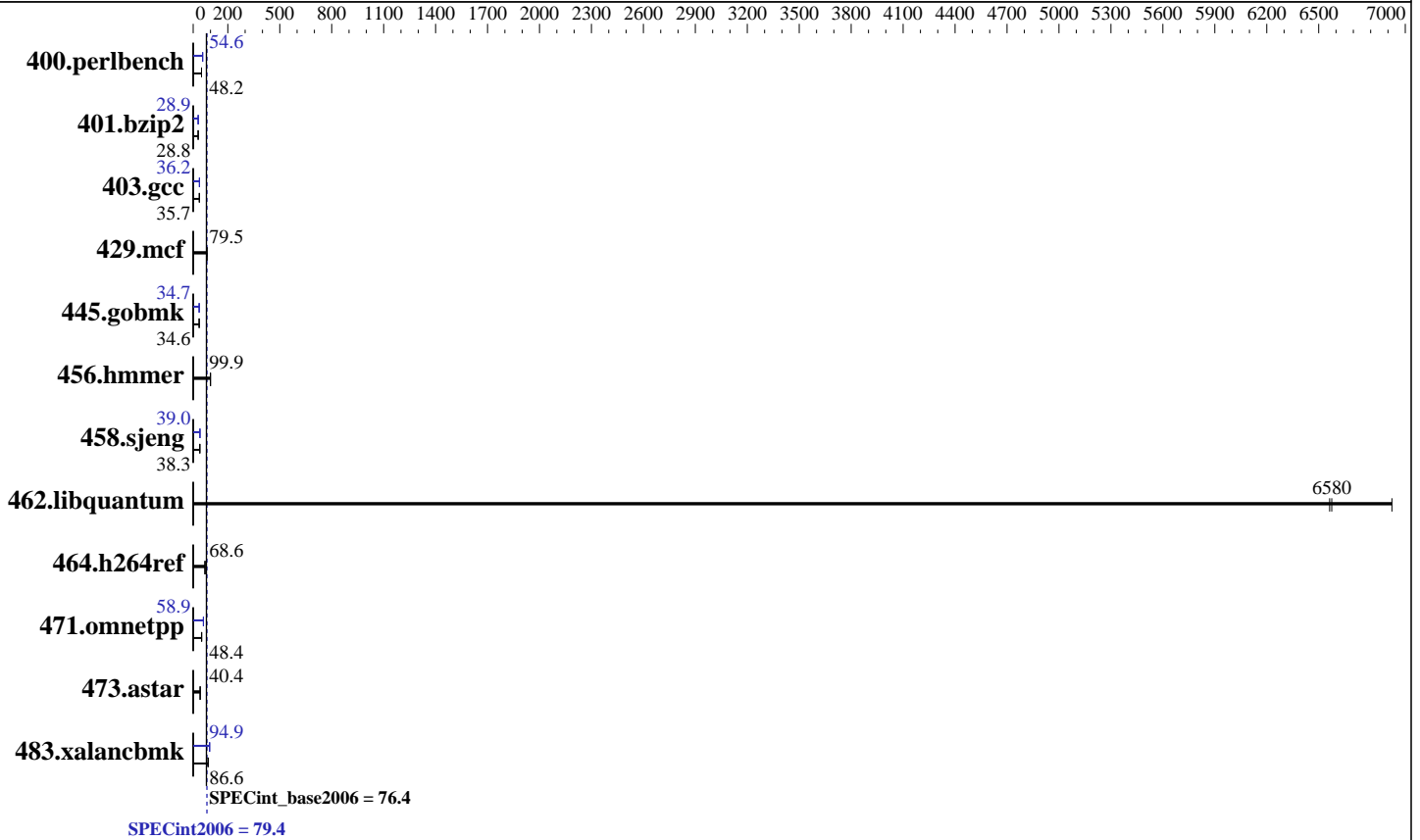
Test sponsor: Dell Inc.

Tested by: Dell Inc.

Test date: Aug-2017

Hardware Availability: Sep-2017

Software Availability: Nov-2016



Hardware

CPU Name: Intel Xeon Platinum 8176
 CPU Characteristics: Intel Turbo Boost Technology up to 3.80 GHz
 CPU MHz: 2100
 FPU: Integrated
 CPU(s) enabled: 56 cores, 2 chips, 28 cores/chip, 2 threads/core
 CPU(s) orderable: 1,2 chip
 Primary Cache: 32 KB I + 32 KB D on chip per core
 Secondary Cache: 1 MB I+D on chip per core
 L3 Cache: 38.5 MB I+D on chip per chip
 Other Cache: None
 Memory: 192 GB (12 x 16 GB 2Rx8 PC4-2666V-R)
 Disk Subsystem: 1 x 960 GB SATA SSD
 Other Hardware: None

Software

Operating System: SUSE Linux Enterprise Server 12 SP3 (x86_64) 4.4.70-2-default
 Compiler: C/C++: Version 17.0.3.191 of Intel C/C++ Compiler for Linux
 Auto Parallel: Yes
 File System: btrfs
 System State: Run level 3 (multi-user)
 Base Pointers: 32/64-bit
 Peak Pointers: 32/64-bit
 Other Software: Microquill SmartHeap V10.2



SPEC CINT2006 Result

Copyright 2006-2017 Standard Performance Evaluation Corporation

Dell Inc.

PowerEdge M640 (Intel Xeon Platinum 8176, 2.10 GHz)

SPECint2006 = **79.4**

SPECint_base2006 = **76.4**

CPU2006 license: 55
Test sponsor: Dell Inc.
Tested by: Dell Inc.

Test date: Aug-2017
Hardware Availability: Sep-2017
Software Availability: Nov-2016

Results Table

Benchmark	Base						Peak					
	Seconds	Ratio	Seconds	Ratio	Seconds	Ratio	Seconds	Ratio	Seconds	Ratio	Seconds	Ratio
400.perlbench	<u>203</u>	<u>48.2</u>	203	48.0	203	48.2	179	54.6	<u>179</u>	<u>54.6</u>	179	54.7
401.bzip2	336	28.7	335	28.8	<u>335</u>	<u>28.8</u>	333	29.0	<u>333</u>	<u>28.9</u>	334	28.9
403.gcc	<u>226</u>	<u>35.7</u>	225	35.7	226	35.6	<u>222</u>	<u>36.2</u>	223	36.0	222	36.3
429.mcf	116	78.8	115	79.5	<u>115</u>	<u>79.5</u>	116	78.8	115	79.5	<u>115</u>	<u>79.5</u>
445.gobmk	303	34.6	303	34.6	<u>303</u>	<u>34.6</u>	303	34.7	302	34.7	<u>303</u>	<u>34.7</u>
456.hmmer	94.0	99.3	93.1	100	<u>93.4</u>	<u>99.9</u>	94.0	99.3	93.1	100	<u>93.4</u>	<u>99.9</u>
458.sjeng	316	38.2	<u>316</u>	<u>38.3</u>	316	38.3	<u>310</u>	<u>39.0</u>	310	39.0	311	39.0
462.libquantum	<u>3.15</u>	<u>6580</u>	3.16	6560	2.99	6920	<u>3.15</u>	<u>6580</u>	3.16	6560	2.99	6920
464.h264ref	322	68.7	<u>322</u>	<u>68.6</u>	327	67.6	322	68.7	<u>322</u>	<u>68.6</u>	327	67.6
471.omnetpp	126	49.6	<u>129</u>	<u>48.4</u>	130	47.9	<u>106</u>	<u>58.9</u>	105	59.5	106	58.9
473.astar	174	40.4	<u>174</u>	<u>40.4</u>	175	40.2	174	40.4	<u>174</u>	<u>40.4</u>	175	40.2
483.xalancbmk	80.8	85.3	<u>79.7</u>	<u>86.6</u>	79.5	86.8	72.5	95.2	<u>72.7</u>	<u>94.9</u>	73.5	93.8

Results appear in the order in which they were run. Bold underlined text indicates a median measurement.

Submit Notes

The numactl mechanism was used to bind copies to processors. The config file option 'submit' was used to generate numactl commands to bind each copy to a specific processor. For details, please see the config file.

Operating System Notes

Stack size set to unlimited using "ulimit -s unlimited"

Platform Notes

BIOS settings:
Sub NUMA Cluster disabled
Virtualization Technology disabled
System Profile set to Custom
CPU Performance set to Maximum Performance
C States set to Autonomous
C1E disabled
Energy Efficient Turbo disabled
Uncore Frequency set to Dynamic
Energy Efficiency Policy set to Performance
Memory Patrol Scrub disabled
Logical Processor enabled
CPU Interconnect Bus Link Power Management disabled
PCI ASPM L1 Link Power Management disabled
Sysinfo program /root/cpu2006-1.2_ic17u3/config/sysinfo.rev6993
Revision 6993 of 2015-11-06 (b5e8d4b4eb51ed28d7f98696cbe290c1)
running on linux-287k Thu Aug 31 18:38:54 2017

Continued on next page



SPEC CINT2006 Result

Copyright 2006-2017 Standard Performance Evaluation Corporation

Dell Inc.

SPECint2006 = 79.4

PowerEdge M640 (Intel Xeon Platinum 8176, 2.10 GHz)

SPECint_base2006 = 76.4

CPU2006 license: 55

Test date: Aug-2017

Test sponsor: Dell Inc.

Hardware Availability: Sep-2017

Tested by: Dell Inc.

Software Availability: Nov-2016

Platform Notes (Continued)

This section contains SUT (System Under Test) info as seen by some common utilities. To remove or add to this section, see: <http://www.spec.org/cpu2006/Docs/config.html#sysinfo>

From /proc/cpuinfo

```

model name      : Intel(R) Xeon(R) Platinum 8176 CPU @ 2.10GHz
 2 "physical id"s (chips)
 112 "processors"
cores, siblings (Caution: counting these is hw and system dependent. The
following excerpts from /proc/cpuinfo might not be reliable. Use with
caution.)
  cpu cores     : 28
  siblings      : 56
  physical 0:   cores 0 1 2 3 4 5 6 8 9 10 11 12 13 14 16 17 18 19 20 21 22 24
                25 26 27 28 29 30
  physical 1:   cores 0 1 2 3 4 5 6 8 9 10 11 12 13 14 16 17 18 19 20 21 22 24
                25 26 27 28 29 30
cache size      : 39424 KB

```

From /proc/meminfo

```

MemTotal:      196682072 kB
HugePages_Total:      0
Hugepagesize:    2048 kB

```

From /etc/*release* /etc/*version*

```

SuSE-release:
SUSE Linux Enterprise Server 12 (x86_64)
VERSION = 12
PATCHLEVEL = 3
# This file is deprecated and will be removed in a future service pack or
release.
# Please check /etc/os-release for details about this release.
os-release:
NAME="SLES"
VERSION="12-SP3"
VERSION_ID="12.3"
PRETTY_NAME="SUSE Linux Enterprise Server 12 SP3"
ID="sles"
ANSI_COLOR="0;32"
CPE_NAME="cpe:/o:suse:sles:12:sp3"

```

uname -a:

```

Linux linux-287k 4.4.70-2-default #1 SMP Wed Jun 7 15:12:06 UTC 2017
(4502c76) x86_64 x86_64 x86_64 GNU/Linux

```

run-level 3 Aug 31 18:38

SPEC is set to: /root/cpu2006-1.2_ic17u3

```

Filesystem      Type      Size  Used Avail Use% Mounted on
/dev/sda3        btrfs    928G  7.3G  918G   1% /

```

Additional information from dmidecode:

Continued on next page



SPEC CINT2006 Result

Copyright 2006-2017 Standard Performance Evaluation Corporation

Dell Inc.

SPECint2006 = 79.4

PowerEdge M640 (Intel Xeon Platinum 8176, 2.10 GHz)

SPECint_base2006 = 76.4

CPU2006 license: 55

Test date: Aug-2017

Test sponsor: Dell Inc.

Hardware Availability: Sep-2017

Tested by: Dell Inc.

Software Availability: Nov-2016

Platform Notes (Continued)

Warning: Use caution when you interpret this section. The 'dmidecode' program reads system data which is "intended to allow hardware to be accurately determined", but the intent may not be met, as there are frequent changes to hardware, firmware, and the "DMTF SMBIOS" standard.

BIOS Dell Inc. 1.0.0 08/10/2017

Memory:

12x 002C00B3002C 18ASF2G72PDZ-2G6D1 16 GB 2 rank 2666 MHz

4x Not Specified Not Specified

(End of data from sysinfo program)

General Notes

Environment variables set by runspec before the start of the run:

KMP_AFFINITY = "granularity=fine,scatter"

LD_LIBRARY_PATH = "/root/cpu2006-1.2_ic17u3/lib/ia32:/root/cpu2006-1.2_ic17u3/lib/intel64:/root/cpu2006-1.2_ic17u3/sh10.2"

OMP_NUM_THREADS = "56"

Binaries compiled on a system with 1x Intel Core i7-4790 CPU + 32GB RAM memory using Redhat Enterprise Linux 7.2

Transparent Huge Pages enabled by default.

Filesystem page cache cleared with:

shell invocation of 'sync; echo 3 > /proc/sys/vm/drop_caches' prior to run

Base Compiler Invocation

C benchmarks:

icc -m64

C++ benchmarks:

icpc -m64

Base Portability Flags

400.perlbench: -DSPEC_CPU_LP64 -DSPEC_CPU_LINUX_X64

401.bzip2: -DSPEC_CPU_LP64

403.gcc: -DSPEC_CPU_LP64

429.mcf: -DSPEC_CPU_LP64

445.gobmk: -DSPEC_CPU_LP64

456.hmmer: -DSPEC_CPU_LP64

458.sjeng: -DSPEC_CPU_LP64

462.libquantum: -DSPEC_CPU_LP64 -DSPEC_CPU_LINUX

464.h264ref: -DSPEC_CPU_LP64

471.omnetpp: -DSPEC_CPU_LP64

Continued on next page

Standard Performance Evaluation Corporation

info@spec.org

http://www.spec.org/

Page 4



SPEC CINT2006 Result

Copyright 2006-2017 Standard Performance Evaluation Corporation

Dell Inc.

SPECint2006 = 79.4

PowerEdge M640 (Intel Xeon Platinum 8176, 2.10 GHz)

SPECint_base2006 = 76.4

CPU2006 license: 55

Test date: Aug-2017

Test sponsor: Dell Inc.

Hardware Availability: Sep-2017

Tested by: Dell Inc.

Software Availability: Nov-2016

Base Portability Flags (Continued)

473.astar: -DSPEC_CPU_LP64
483.xalancbmk: -DSPEC_CPU_LP64 -DSPEC_CPU_LINUX

Base Optimization Flags

C benchmarks:

-xCORE-AVX2 -ipo -O3 -no-prec-div -parallel -qopt-prefetch
-auto-p32

C++ benchmarks:

-xCORE-AVX2 -ipo -O3 -no-prec-div -qopt-prefetch -auto-p32
-Wl,-z,muldefs -L/sh10.2 -lsmartheap64

Base Other Flags

C benchmarks:

403.gcc: -Dalloca=_alloca

Peak Compiler Invocation

C benchmarks (except as noted below):

icc -m64

400.perlbench: icc -m32 -L/opt/intel/compilers_and_libraries_2017/linux/lib/ia32

445.gobmk: icc -m32 -L/opt/intel/compilers_and_libraries_2017/linux/lib/ia32

C++ benchmarks (except as noted below):

icc -m32 -L/opt/intel/compilers_and_libraries_2017/linux/lib/ia32

473.astar: icpc -m64

Peak Portability Flags

400.perlbench: -D_FILE_OFFSET_BITS=64 -DSPEC_CPU_LINUX_IA32

401.bzip2: -DSPEC_CPU_LP64

403.gcc: -DSPEC_CPU_LP64

429.mcf: -DSPEC_CPU_LP64

445.gobmk: -D_FILE_OFFSET_BITS=64

456.hmmer: -DSPEC_CPU_LP64

Continued on next page

Standard Performance Evaluation Corporation

info@spec.org

http://www.spec.org/

Page 5



SPEC CINT2006 Result

Copyright 2006-2017 Standard Performance Evaluation Corporation

Dell Inc.

SPECint2006 = 79.4

PowerEdge M640 (Intel Xeon Platinum 8176, 2.10 GHz)

SPECint_base2006 = 76.4

CPU2006 license: 55

Test date: Aug-2017

Test sponsor: Dell Inc.

Hardware Availability: Sep-2017

Tested by: Dell Inc.

Software Availability: Nov-2016

Peak Portability Flags (Continued)

458.sjeng: -DSPEC_CPU_LP64
 462.libquantum: -DSPEC_CPU_LP64 -DSPEC_CPU_LINUX
 464.h264ref: -DSPEC_CPU_LP64
 471.omnetpp: -D_FILE_OFFSET_BITS=64
 473.astar: -DSPEC_CPU_LP64
 483.xalancbmk: -D_FILE_OFFSET_BITS=64 -DSPEC_CPU_LINUX

Peak Optimization Flags

C benchmarks:

400.perlbench: -prof-gen(pass 1) -prof-use(pass 2) -xCORE-AVX2(pass 2)
 -par-num-threads=1(pass 1) -ipo(pass 2) -O3(pass 2)
 -no-prec-div(pass 2) -qopt-prefetch

401.bzp2: -prof-gen(pass 1) -prof-use(pass 2) -xCORE-AVX2(pass 2)
 -par-num-threads=1(pass 1) -ipo(pass 2) -O3(pass 2)
 -no-prec-div -auto-ilp32 -qopt-prefetch

403.gcc: -xCORE-AVX2 -ipo -O3 -no-prec-div -inline-calloc
 -qopt-malloc-options=3 -auto-ilp32

429.mcf: basepeak = yes

445.gobmk: -prof-gen(pass 1) -prof-use(pass 2) -xCORE-AVX2(pass 2)
 -par-num-threads=1(pass 1) -ipo(pass 2) -O3(pass 2)
 -no-prec-div(pass 2)

456.hmmer: basepeak = yes

458.sjeng: -prof-gen(pass 1) -prof-use(pass 2) -xCORE-AVX2(pass 2)
 -par-num-threads=1(pass 1) -ipo(pass 2) -O3(pass 2)
 -no-prec-div(pass 2) -unroll4

462.libquantum: basepeak = yes

464.h264ref: basepeak = yes

C++ benchmarks:

471.omnetpp: -prof-gen(pass 1) -prof-use(pass 2) -xCORE-AVX2(pass 2)
 -par-num-threads=1(pass 1) -ipo(pass 2) -O3(pass 2)
 -no-prec-div(pass 2) -qopt-ra-region-strategy=block
 -Wl,-z,muldefs -L/sh10.2 -lsmartheap

473.astar: basepeak = yes

Continued on next page



SPEC CINT2006 Result

Copyright 2006-2017 Standard Performance Evaluation Corporation

Dell Inc.

PowerEdge M640 (Intel Xeon Platinum 8176, 2.10 GHz)

SPECint2006 = 79.4

SPECint_base2006 = 76.4

CPU2006 license: 55

Test sponsor: Dell Inc.

Tested by: Dell Inc.

Test date: Aug-2017

Hardware Availability: Sep-2017

Software Availability: Nov-2016

Peak Optimization Flags (Continued)

483.xalanbmk: -xCORE-AVX2 -ipo -O3 -no-prec-div -qopt-prefetch
-Wl,-z,muldefs -L/sh10.2 -lsmartheap

Peak Other Flags

C benchmarks:

403.gcc: -Dalloca=_alloca

The flags files that were used to format this result can be browsed at

<http://www.spec.org/cpu2006/flags/Intel-ic17.0-official-linux64-revF.html>

<http://www.spec.org/cpu2006/flags/Dell-Platform-Flags-PowerEdge14G-revC.html>

You can also download the XML flags sources by saving the following links:

<http://www.spec.org/cpu2006/flags/Intel-ic17.0-official-linux64-revF.xml>

<http://www.spec.org/cpu2006/flags/Dell-Platform-Flags-PowerEdge14G-revC.xml>

SPEC and SPECint are registered trademarks of the Standard Performance Evaluation Corporation. All other brand and product names appearing in this result are trademarks or registered trademarks of their respective holders.

For questions about this result, please contact the tester.
For other inquiries, please contact webmaster@spec.org.

Tested with SPEC CPU2006 v1.2.
Report generated on Wed Oct 4 12:39:17 2017 by SPEC CPU2006 PS/PDF formatter v6932.
Originally published on 3 October 2017.