



SPEC® CINT2006 Result

Copyright 2006-2017 Standard Performance Evaluation Corporation

Dell Inc.

PowerEdge C6420 (Intel Xeon Platinum 8176, 2.10 GHz)

SPECint®_rate2006 = 2410

SPECint_rate_base2006 = 2310

CPU2006 license: 55

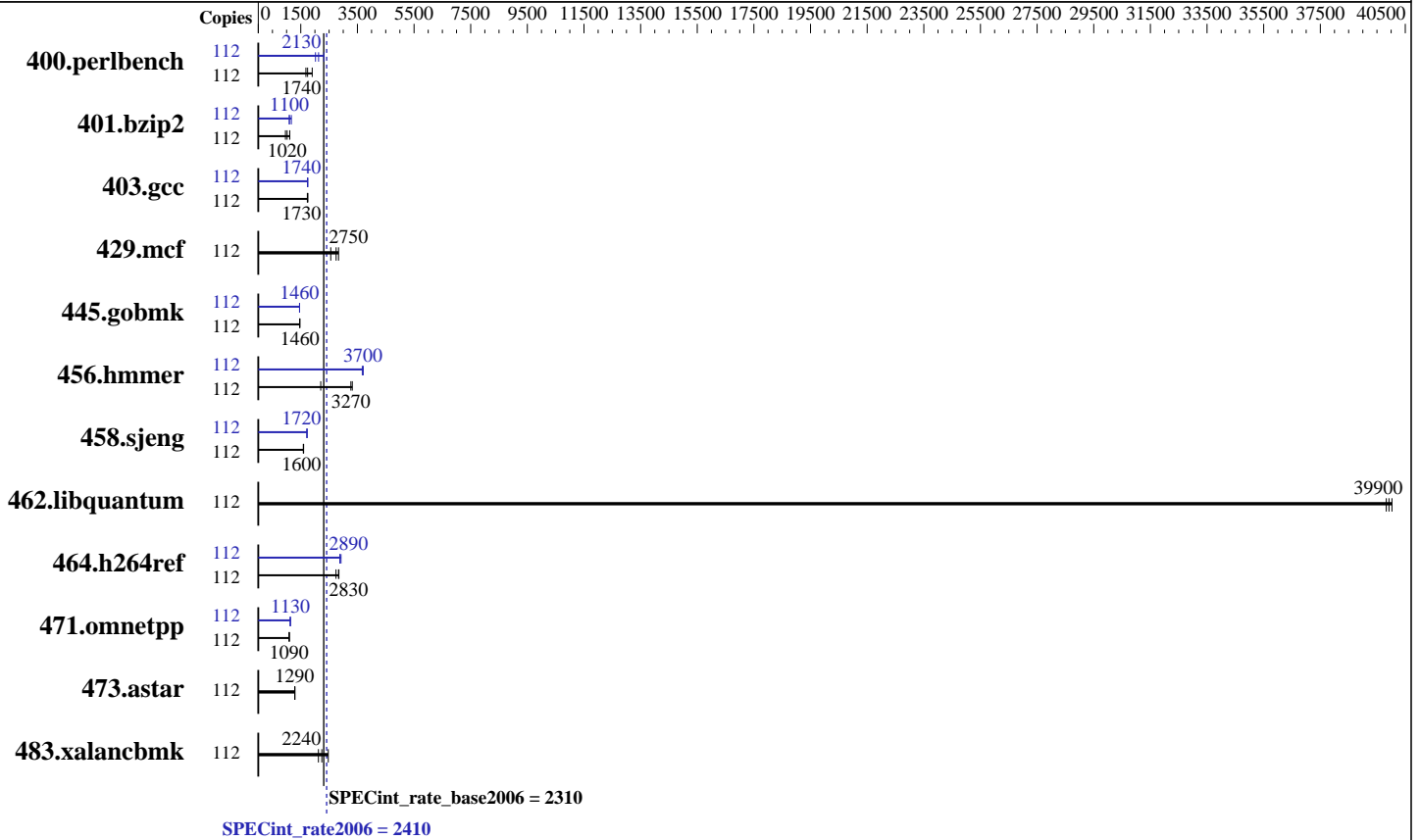
Test sponsor: Dell Inc.

Tested by: Dell Inc.

Test date: Jun-2017

Hardware Availability: Jul-2017

Software Availability: Jul-2017



Hardware

CPU Name: Intel Xeon Platinum 8176
 CPU Characteristics: Intel Turbo Boost Technology up to 3.80 GHz
 CPU MHz: 2100
 FPU: Integrated
 CPU(s) enabled: 56 cores, 2 chips, 28 cores/chip, 2 threads/core
 CPU(s) orderable: 1,2 chip
 Primary Cache: 32 KB I + 32 KB D on chip per core
 Secondary Cache: 1 MB I+D on chip per core
 L3 Cache: 38.5 MB I+D on chip per chip
 Other Cache: None
 Memory: 192 GB (12 x 16 GB 2Rx8 PC4-2666V-R)
 Disk Subsystem: 1 x 960 GB SATA SSD
 Other Hardware: None

Software

Operating System: SUSE Linux Enterprise Server 12 SP2
 4.4.21-69-default
 Compiler: C/C++: Version 17.0.3.191 of Intel C/C++
 Compiler for Linux
 Auto Parallel: Yes
 File System: ext4
 System State: Run level 3 (multi-user)
 Base Pointers: 32-bit
 Peak Pointers: 32/64-bit
 Other Software: Microquill SmartHeap V10.2



SPEC CINT2006 Result

Copyright 2006-2017 Standard Performance Evaluation Corporation

Dell Inc.

PowerEdge C6420 (Intel Xeon Platinum 8176, 2.10 GHz)

SPECint_rate2006 = 2410

SPECint_rate_base2006 = 2310

CPU2006 license: 55
Test sponsor: Dell Inc.
Tested by: Dell Inc.

Test date: Jun-2017
Hardware Availability: Jul-2017
Software Availability: Jul-2017

Results Table

Benchmark	Base							Peak						
	Copies	Seconds	Ratio	Seconds	Ratio	Seconds	Ratio	Copies	Seconds	Ratio	Seconds	Ratio	Seconds	Ratio
400.perlbench	112	575	1900	651	1680	<u>629</u>	<u>1740</u>	112	542	2020	<u>514</u>	<u>2130</u>	473	2320
401.bzip2	112	971	1110	<u>1060</u>	<u>1020</u>	1126	960	112	<u>985</u>	<u>1100</u>	986	1100	925	1170
403.gcc	112	<u>520</u>	<u>1730</u>	515	1750	520	1730	112	515	1750	520	1740	<u>518</u>	<u>1740</u>
429.mcf	112	<u>372</u>	<u>2750</u>	399	2560	360	2830	112	<u>372</u>	<u>2750</u>	399	2560	360	2830
445.gobmk	112	803	1460	<u>802</u>	<u>1460</u>	802	1460	112	<u>806</u>	<u>1460</u>	806	1460	806	1460
456.hammer	112	315	3320	474	2210	<u>320</u>	<u>3270</u>	112	282	3700	<u>283</u>	<u>3700</u>	285	3670
458.sjeng	112	847	1600	853	1590	<u>848</u>	<u>1600</u>	112	788	1720	<u>788</u>	<u>1720</u>	788	1720
462.libquantum	112	58.0	40000	<u>58.1</u>	<u>39900</u>	58.3	39800	112	58.0	40000	<u>58.1</u>	<u>39900</u>	58.3	39800
464.h264ref	112	871	2850	<u>875</u>	<u>2830</u>	903	2740	112	848	2920	<u>859</u>	<u>2890</u>	861	2880
471.omnetpp	112	641	1090	641	1090	<u>641</u>	<u>1090</u>	112	618	1130	619	1130	<u>619</u>	<u>1130</u>
473.astar	112	610	1290	610	1290	<u>610</u>	<u>1290</u>	112	610	1290	610	1290	<u>610</u>	<u>1290</u>
483.xalancbmk	112	364	2120	<u>345</u>	<u>2240</u>	313	2470	112	364	2120	<u>345</u>	<u>2240</u>	313	2470

Results appear in the order in which they were run. Bold underlined text indicates a median measurement.

Submit Notes

The numactl mechanism was used to bind copies to processors. The config file option 'submit' was used to generate numactl commands to bind each copy to a specific processor. For details, please see the config file.

Operating System Notes

Stack size set to unlimited using "ulimit -s unlimited"

Platform Notes

BIOS settings:
Sub NUMA Cluster enabled
Virtualization Technology disabled
System Profile set to Custom
CPU Performance set to Maximum Performance
C States set to autonomous
C1E disabled
Energy Efficient Turbo disabled
Uncore Frequency set to Dynamic
Energy Efficiency Policy set to Performance
Memory Patrol Scrub disabled
Logical Processor enabled
CPU Interconnect Bus Link Power Management disabled
PCI ASPM L1 Link Power Management disabled
Sysinfo program /root/cpu2006-1.2_ic17u3/config/sysinfo.rev6993
Revision 6993 of 2015-11-06 (b5e8d4b4eb51ed28d7f98696cbe290c1)
running on linux-38mh Tue Jun 27 06:25:46 2017

Continued on next page



SPEC CINT2006 Result

Copyright 2006-2017 Standard Performance Evaluation Corporation

Dell Inc.

SPECint_rate2006 = 2410

PowerEdge C6420 (Intel Xeon Platinum 8176, 2.10 GHz)

SPECint_rate_base2006 = 2310

CPU2006 license: 55

Test date: Jun-2017

Test sponsor: Dell Inc.

Hardware Availability: Jul-2017

Tested by: Dell Inc.

Software Availability: Jul-2017

Platform Notes (Continued)

This section contains SUT (System Under Test) info as seen by some common utilities. To remove or add to this section, see: <http://www.spec.org/cpu2006/Docs/config.html#sysinfo>

From /proc/cpuinfo

```

model name      : Intel(R) Xeon(R) Platinum 8176 CPU @ 2.10GHz
 2 "physical id"s (chips)
 112 "processors"
cores, siblings (Caution: counting these is hw and system dependent. The following excerpts from /proc/cpuinfo might not be reliable. Use with caution.)
  cpu cores      : 28
  siblings       : 56
  physical 0:    cores 0 1 2 3 4 5 6 8 9 10 11 12 13 14 16 17 18 19 20 21 22 24
                  25 26 27 28 29 30
  physical 1:    cores 0 1 2 3 4 5 6 8 9 10 11 12 13 14 16 17 18 19 20 21 22 24
                  25 26 27 28 29 30
cache size      : 39424 KB

```

From /proc/meminfo

```

MemTotal:        196687088 kB
HugePages_Total: 0
Hugepagesize:    2048 kB

```

From /etc/*release* /etc/*version*

```

SuSE-release:
SUSE Linux Enterprise Server 12 (x86_64)
VERSION = 12
PATCHLEVEL = 2
# This file is deprecated and will be removed in a future service pack or
release.
# Please check /etc/os-release for details about this release.
os-release:
NAME="SLES"
VERSION="12-SP2"
VERSION_ID="12.2"
PRETTY_NAME="SUSE Linux Enterprise Server 12 SP2"
ID="sles"
ANSI_COLOR="0;32"
CPE_NAME="cpe:/o:suse:sles:12:sp2"

```

uname -a:

```

Linux linux-38mh 4.4.21-69-default #1 SMP Tue Oct 25 10:58:20 UTC 2016
(9464f67) x86_64 x86_64 x86_64 GNU/Linux

```

run-level 3 Jun 27 06:24

SPEC is set to: /root/cpu2006-1.2_ic17u3

```

Filesystem      Type  Size  Used Avail Use% Mounted on
/dev/sda2       ext4  915G  8.4G  906G   1% /

```

Additional information from dmidecode:

Continued on next page



SPEC CINT2006 Result

Copyright 2006-2017 Standard Performance Evaluation Corporation

Dell Inc.

SPECint_rate2006 = 2410

PowerEdge C6420 (Intel Xeon Platinum 8176, 2.10 GHz)

SPECint_rate_base2006 = 2310

CPU2006 license: 55

Test date: Jun-2017

Test sponsor: Dell Inc.

Hardware Availability: Jul-2017

Tested by: Dell Inc.

Software Availability: Jul-2017

Platform Notes (Continued)

Warning: Use caution when you interpret this section. The 'dmidecode' program reads system data which is "intended to allow hardware to be accurately determined", but the intent may not be met, as there are frequent changes to hardware, firmware, and the "DMTF SMBIOS" standard.

BIOS Dell Inc. 1.0.6 06/22/2017

Memory:

12x 002C00B3002C 18ASF2G72PDZ-2G6D1 16 GB 2 rank 2666 MHz

4x Not Specified Not Specified

(End of data from sysinfo program)

General Notes

Environment variables set by runspec before the start of the run:

LD_LIBRARY_PATH = "/root/cpu2006-1.2_icl7u3/lib/ia32:/root/cpu2006-1.2_icl7u3/lib/intel64:/root/cpu2006-1.2_icl7u3/sh10.2"

Binaries compiled on a system with 1x Intel Core i7-4790 CPU + 32GB RAM memory using Redhat Enterprise Linux 7.2

Transparent Huge Pages enabled by default

Filesystem page cache cleared with:

shell invocation of 'sync; echo 3 > /proc/sys/vm/drop_caches' prior to run

runspec command invoked through numactl i.e.:

numactl --interleave=all runspec <etc>

Base Compiler Invocation

C benchmarks:

icc -m32 -L/opt/intel/compilers_and_libraries_2017/linux/lib/ia32

C++ benchmarks:

icpc -m32 -L/opt/intel/compilers_and_libraries_2017/linux/lib/ia32

Base Portability Flags

400.perlbench: -D_FILE_OFFSET_BITS=64 -DSPEC_CPU_LINUX_IA32

401.bzip2: -D_FILE_OFFSET_BITS=64

403.gcc: -D_FILE_OFFSET_BITS=64

429.mcf: -D_FILE_OFFSET_BITS=64

445.gobmk: -D_FILE_OFFSET_BITS=64

456.hmmer: -D_FILE_OFFSET_BITS=64

458.sjeng: -D_FILE_OFFSET_BITS=64

462.libquantum: -D_FILE_OFFSET_BITS=64 -DSPEC_CPU_LINUX

464.h264ref: -D_FILE_OFFSET_BITS=64

471.omnetpp: -D_FILE_OFFSET_BITS=64

Continued on next page

Standard Performance Evaluation Corporation

info@spec.org

http://www.spec.org/

Page 4



SPEC CINT2006 Result

Copyright 2006-2017 Standard Performance Evaluation Corporation

Dell Inc.

SPECint_rate2006 = 2410

PowerEdge C6420 (Intel Xeon Platinum 8176, 2.10 GHz)

SPECint_rate_base2006 = 2310

CPU2006 license: 55

Test date: Jun-2017

Test sponsor: Dell Inc.

Hardware Availability: Jul-2017

Tested by: Dell Inc.

Software Availability: Jul-2017

Base Portability Flags (Continued)

473.astar: -D_FILE_OFFSET_BITS=64
483.xalancbmk: -D_FILE_OFFSET_BITS=64 -DSPEC_CPU_LINUX

Base Optimization Flags

C benchmarks:

-xCORE-AVX512 -ipo -O3 -no-prec-div -qopt-prefetch
-qopt-mem-layout-trans=3

C++ benchmarks:

-xCORE-AVX512 -ipo -O3 -no-prec-div -qopt-prefetch
-qopt-mem-layout-trans=3 -Wl,-z,muldefs -L/sh10.2 -lsmartheap

Base Other Flags

C benchmarks:

403.gcc: -Dalloca=_alloca

Peak Compiler Invocation

C benchmarks (except as noted below):

icc -m32 -L/opt/intel/compilers_and_libraries_2017/linux/lib/ia32

400.perlbench: icc -m64

401.bzip2: icc -m64

456.hmmer: icc -m64

458.sjeng: icc -m64

C++ benchmarks:

icpc -m32 -L/opt/intel/compilers_and_libraries_2017/linux/lib/ia32

Peak Portability Flags

400.perlbench: -DSPEC_CPU_LP64 -DSPEC_CPU_LINUX_X64

401.bzip2: -DSPEC_CPU_LP64

403.gcc: -D_FILE_OFFSET_BITS=64

429.mcf: -D_FILE_OFFSET_BITS=64

Continued on next page

Standard Performance Evaluation Corporation

info@spec.org

http://www.spec.org/

Page 5



SPEC CINT2006 Result

Copyright 2006-2017 Standard Performance Evaluation Corporation

Dell Inc.

SPECint_rate2006 = 2410

PowerEdge C6420 (Intel Xeon Platinum 8176, 2.10 GHz)

SPECint_rate_base2006 = 2310

CPU2006 license: 55

Test date: Jun-2017

Test sponsor: Dell Inc.

Hardware Availability: Jul-2017

Tested by: Dell Inc.

Software Availability: Jul-2017

Peak Portability Flags (Continued)

445.gobmk: -D_FILE_OFFSET_BITS=64
 456.hmmer: -DSPEC_CPU_LP64
 458.sjeng: -DSPEC_CPU_LP64
 462.libquantum: -D_FILE_OFFSET_BITS=64 -DSPEC_CPU_LINUX
 464.h264ref: -D_FILE_OFFSET_BITS=64
 471.omnetpp: -D_FILE_OFFSET_BITS=64
 473.astar: -D_FILE_OFFSET_BITS=64
 483.xalancbmk: -D_FILE_OFFSET_BITS=64 -DSPEC_CPU_LINUX

Peak Optimization Flags

C benchmarks:

400.perlbench: -prof-gen(pass 1) -prof-use(pass 2) -xCORE-AVX512(pass 2)
 -par-num-threads=1(pass 1) -ipo(pass 2) -O3(pass 2)
 -no-prec-div(pass 2) -auto-ilp32 -qopt-mem-layout-trans=3

401.bzip2: -prof-gen(pass 1) -prof-use(pass 2) -xCORE-AVX512(pass 2)
 -par-num-threads=1(pass 1) -ipo(pass 2) -O3(pass 2)
 -no-prec-div(pass 2) -qopt-prefetch -auto-ilp32
 -qopt-mem-layout-trans=3

403.gcc: -xCORE-AVX512 -ipo -O3 -no-prec-div
 -qopt-mem-layout-trans=3

429.mcf: basepeak = yes

445.gobmk: -prof-gen(pass 1) -prof-use(pass 2) -xCORE-AVX512(pass 2)
 -par-num-threads=1(pass 1) -ipo(pass 2) -O3(pass 2)
 -no-prec-div(pass 2) -qopt-mem-layout-trans=3

456.hmmer: -xCORE-AVX512 -ipo -O3 -no-prec-div -unroll2 -auto-ilp32
 -qopt-mem-layout-trans=3

458.sjeng: -prof-gen(pass 1) -prof-use(pass 2) -xCORE-AVX512(pass 2)
 -par-num-threads=1(pass 1) -ipo(pass 2) -O3(pass 2)
 -no-prec-div(pass 2) -unroll4 -auto-ilp32
 -qopt-mem-layout-trans=3

462.libquantum: basepeak = yes

464.h264ref: -prof-gen(pass 1) -prof-use(pass 2) -xCORE-AVX512(pass 2)
 -par-num-threads=1(pass 1) -ipo(pass 2) -O3(pass 2)
 -no-prec-div(pass 2) -unroll2 -qopt-mem-layout-trans=3

C++ benchmarks:

Continued on next page



SPEC CINT2006 Result

Copyright 2006-2017 Standard Performance Evaluation Corporation

Dell Inc.

SPECint_rate2006 = 2410

PowerEdge C6420 (Intel Xeon Platinum 8176, 2.10 GHz)

SPECint_rate_base2006 = 2310

CPU2006 license: 55

Test date: Jun-2017

Test sponsor: Dell Inc.

Hardware Availability: Jul-2017

Tested by: Dell Inc.

Software Availability: Jul-2017

Peak Optimization Flags (Continued)

471.omnetpp: -prof-gen(pass 1) -prof-use(pass 2) -xCORE-AVX512(pass 2)
-par-num-threads=1(pass 1) -ipo(pass 2) -O3(pass 2)
-no-prec-div(pass 2)
-qopt-ra-region-strategy=block
-qopt-mem-layout-trans=3 -Wl,-z,muldefs
-L/sh10.2 -lsmartheap

473.astar: basepeak = yes

483.xalancbmk: basepeak = yes

Peak Other Flags

C benchmarks:

403.gcc: -Dalloca=_alloca

The flags files that were used to format this result can be browsed at

<http://www.spec.org/cpu2006/flags/Intel-ic17.0-official-linux64-revF.html>

<http://www.spec.org/cpu2006/flags/Dell-Platform-Flags-PowerEdge14G-revB.html>

You can also download the XML flags sources by saving the following links:

<http://www.spec.org/cpu2006/flags/Intel-ic17.0-official-linux64-revF.xml>

<http://www.spec.org/cpu2006/flags/Dell-Platform-Flags-PowerEdge14G-revB.xml>

SPEC and SPECint are registered trademarks of the Standard Performance Evaluation Corporation. All other brand and product names appearing in this result are trademarks or registered trademarks of their respective holders.

For questions about this result, please contact the tester.
For other inquiries, please contact webmaster@spec.org.

Tested with SPEC CPU2006 v1.2.

Report generated on Tue Jul 25 15:53:22 2017 by SPEC CPU2006 PS/PDF formatter v6932.

Originally published on 25 July 2017.