



# SPEC<sup>®</sup> CINT2006 Result

Copyright 2006-2017 Standard Performance Evaluation Corporation

Dell Inc.

SPECint<sup>®</sup>\_rate2006 = 3560

PowerEdge R940 (Intel Xeon Gold 6140, 2.30 GHz)

SPECint\_rate\_base2006 = 3370

CPU2006 license: 55

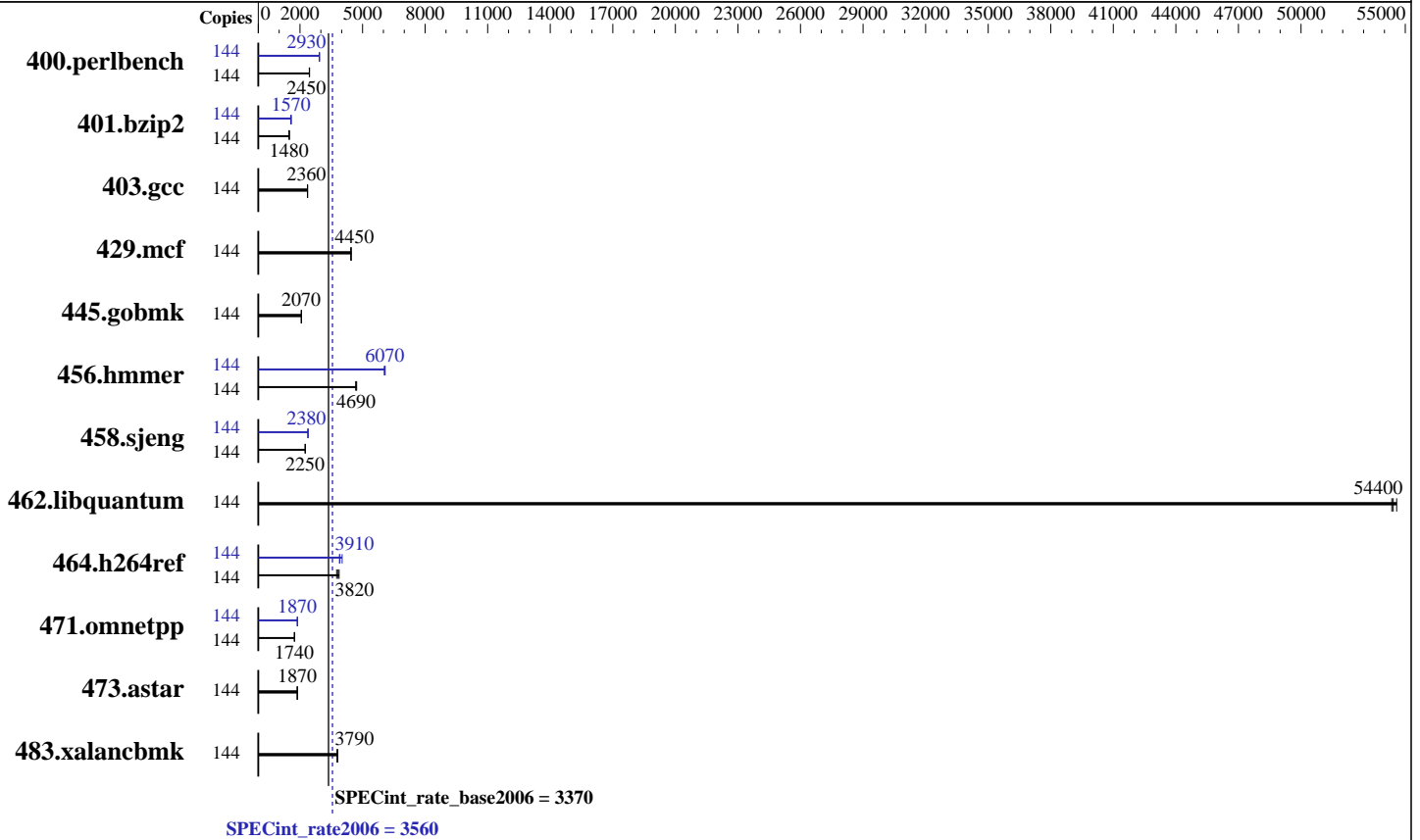
Test date: May-2017

Test sponsor: Dell Inc.

Hardware Availability: Jul-2017

Tested by: Dell Inc.

Software Availability: Nov-2016



### Hardware

CPU Name: Intel Xeon Gold 6140  
 CPU Characteristics: Intel Turbo Boost Technology up to 3.70 GHz  
 CPU MHz: 2300  
 FPU: Integrated  
 CPU(s) enabled: 72 cores, 4 chips, 18 cores/chip, 2 threads/core  
 CPU(s) orderable: 2,4 chip  
 Primary Cache: 32 KB I + 32 KB D on chip per core  
 Secondary Cache: 1 MB I+D on chip per core  
 L3 Cache: 24.75 MB I+D on chip per chip  
 Other Cache: None  
 Memory: 768 GB (48 x 16 GB 2Rx8 PC4-2666V-R)  
 Disk Subsystem: 1 x 960 GB SATA SSD  
 Other Hardware: None

### Software

Operating System: SUSE Linux Enterprise Server 12 SP2  
 4.4.21-69-default  
 Compiler: C/C++: Version 17.0.1.132 of Intel C/C++  
 Compiler for Linux  
 Auto Parallel: Yes  
 File System: btrfs  
 System State: Run level 3 (multi-user)  
 Base Pointers: 32-bit  
 Peak Pointers: 32/64-bit  
 Other Software: Microquill SmartHeap V10.2



# SPEC CINT2006 Result

Copyright 2006-2017 Standard Performance Evaluation Corporation

Dell Inc.

SPECint\_rate2006 = 3560

PowerEdge R940 (Intel Xeon Gold 6140, 2.30 GHz)

SPECint\_rate\_base2006 = 3370

CPU2006 license: 55

Test date: May-2017

Test sponsor: Dell Inc.

Hardware Availability: Jul-2017

Tested by: Dell Inc.

Software Availability: Nov-2016

## Results Table

Benchmark	Base							Peak						
	Copies	Seconds	Ratio	Seconds	Ratio	Seconds	Ratio	Copies	Seconds	Ratio	Seconds	Ratio	Seconds	Ratio
400.perlbench	144	<b>574</b>	<b>2450</b>	575	2450	572	2460	144	<b>480</b>	<b>2930</b>	479	2940	481	2920
401.bzip2	144	<b>939</b>	<b>1480</b>	939	1480	933	1490	144	<b>883</b>	<b>1570</b>	894	1550	880	1580
403.gcc	144	<b>491</b>	<b>2360</b>	490	2370	492	2360	144	<b>491</b>	<b>2360</b>	490	2370	492	2360
429.mcf	144	295	4450	<b>295</b>	<b>4450</b>	296	4440	144	295	4450	<b>295</b>	<b>4450</b>	296	4440
445.gobmk	144	732	2060	730	2070	<b>731</b>	<b>2070</b>	144	732	2060	730	2070	<b>731</b>	<b>2070</b>
456.hammer	144	287	4670	285	4720	<b>287</b>	<b>4690</b>	144	221	6080	222	6040	<b>221</b>	<b>6070</b>
458.sjeng	144	774	2250	<b>774</b>	<b>2250</b>	774	2250	144	<b>731</b>	<b>2380</b>	730	2390	731	2380
462.libquantum	144	54.7	54600	<b>54.8</b>	<b>54400</b>	54.9	54400	144	54.7	54600	<b>54.8</b>	<b>54400</b>	54.9	54400
464.h264ref	144	<b>833</b>	<b>3820</b>	822	3880	848	3760	144	819	3890	<b>814</b>	<b>3910</b>	792	4020
471.omnetpp	144	519	1730	<b>518</b>	<b>1740</b>	518	1740	144	480	1880	480	1870	<b>480</b>	<b>1870</b>
473.astar	144	540	1870	540	1870	<b>540</b>	<b>1870</b>	144	540	1870	540	1870	<b>540</b>	<b>1870</b>
483.xalancbmk	144	<b>262</b>	<b>3790</b>	263	3780	261	3800	144	<b>262</b>	<b>3790</b>	263	3780	261	3800

Results appear in the order in which they were run. Bold underlined text indicates a median measurement.

## Submit Notes

The numactl mechanism was used to bind copies to processors. The config file option 'submit' was used to generate numactl commands to bind each copy to a specific processor. For details, please see the config file.

## Operating System Notes

Stack size set to unlimited using "ulimit -s unlimited"

## Platform Notes

BIOS settings:  
 Sub NUMA Cluster enabled  
 Virtualization Technology disabled  
 System Profile set to Custom  
 CPU Performance set to Maximum Performance  
 C States set to autonomous  
 C1E disabled  
 Energy Efficient Turbo disabled  
 Uncore Frequency set to Dynamic  
 Energy Efficiency Policy set to Performance  
 Memory Patrol Scrub disabled  
 Logical Processor enabled  
 Sysinfo program /root/Desktop/SPECcpu2006/config/sysinfo.rev6993  
 Revision 6993 of 2015-11-06 (b5e8d4b4eb51ed28d7f98696cbe290c1)  
 running on linux-crvz Mon May 8 15:37:09 2017

This section contains SUT (System Under Test) info as seen by  
Continued on next page



# SPEC CINT2006 Result

Copyright 2006-2017 Standard Performance Evaluation Corporation

Dell Inc.

SPECint\_rate2006 = 3560

PowerEdge R940 (Intel Xeon Gold 6140, 2.30 GHz)

SPECint\_rate\_base2006 = 3370

CPU2006 license: 55

Test date: May-2017

Test sponsor: Dell Inc.

Hardware Availability: Jul-2017

Tested by: Dell Inc.

Software Availability: Nov-2016

## Platform Notes (Continued)

some common utilities. To remove or add to this section, see:  
<http://www.spec.org/cpu2006/Docs/config.html#sysinfo>

```

From /proc/cpuinfo
  model name : Intel(R) Xeon(R) Gold 6140 CPU @ 2.30GHz
  4 "physical id"s (chips)
  144 "processors"
  cores, siblings (Caution: counting these is hw and system dependent. The
  following excerpts from /proc/cpuinfo might not be reliable. Use with
  caution.)
    cpu cores : 18
    siblings  : 36
    physical 0: cores 0 1 2 3 4 8 9 10 11 16 17 18 19 20 24 25 26 27
    physical 1: cores 0 1 2 3 4 8 9 10 11 16 17 18 19 20 24 25 26 27
    physical 2: cores 0 1 2 3 4 8 9 10 11 16 17 18 19 20 24 25 26 27
    physical 3: cores 0 1 2 3 4 8 9 10 11 16 17 18 19 20 24 25 26 27
  cache size : 25344 KB

```

```

From /proc/meminfo
MemTotal:      791000272 kB
HugePages_Total:      0
Hugepagesize:    2048 kB

```

```

/usr/bin/lsb_release -d
SUSE Linux Enterprise Server 12 SP2

```

```

From /etc/*release* /etc/*version*
SuSE-release:
SUSE Linux Enterprise Server 12 (x86_64)
VERSION = 12
PATCHLEVEL = 2
# This file is deprecated and will be removed in a future service pack or
release.
# Please check /etc/os-release for details about this release.
os-release:
NAME="SLES"
VERSION="12-SP2"
VERSION_ID="12.2"
PRETTY_NAME="SUSE Linux Enterprise Server 12 SP2"
ID="sles"
ANSI_COLOR="0;32"
CPE_NAME="cpe:/o:suse:sles:12:sp2"

```

```

uname -a:
Linux linux-crvz 4.4.21-69-default #1 SMP Tue Oct 25 10:58:20 UTC 2016
(9464f67) x86_64 x86_64 x86_64 GNU/Linux

```

run-level 3 May 7 22:25

```

SPEC is set to: /root/Desktop/SPECcpu2006
Filesystem      Type      Size  Used Avail Use% Mounted on
/dev/sda3       btrfs    836G  11G  820G   2% /
Continued on next page

```



# SPEC CINT2006 Result

Copyright 2006-2017 Standard Performance Evaluation Corporation

Dell Inc.

SPECint\_rate2006 = 3560

PowerEdge R940 (Intel Xeon Gold 6140, 2.30 GHz)

SPECint\_rate\_base2006 = 3370

CPU2006 license: 55

Test date: May-2017

Test sponsor: Dell Inc.

Hardware Availability: Jul-2017

Tested by: Dell Inc.

Software Availability: Nov-2016

## Platform Notes (Continued)

Additional information from dmidecode:

Warning: Use caution when you interpret this section. The 'dmidecode' program reads system data which is "intended to allow hardware to be accurately determined", but the intent may not be met, as there are frequent changes to hardware, firmware, and the "DMTF SMBIOS" standard.

BIOS Dell Inc. 0.5.5 04/27/2017

Memory:

48x 00CE063200CE M393A2K43BB1-CTD 16 GB 2 rank 2666 MHz

(End of data from sysinfo program)

## General Notes

Environment variables set by runspec before the start of the run:

LD\_LIBRARY\_PATH = "/root/Desktop/SPECcpu2006/lib/ia32:/root/Desktop/SPECcpu2006/lib/intel64:/root/Desktop/SPECcpu2006/sh10.2"

Binaries compiled on a system with 1x Intel Core i7-4790 CPU + 32GB RAM memory using Redhat Enterprise Linux 7.2

Transparent Huge Pages enabled by default

Filesystem page cache cleared with:

echo 1> /proc/sys/vm/drop\_caches

runspec command invoked through numactl i.e.:

numactl --interleave=all runspec <etc>

## Base Compiler Invocation

C benchmarks:

icc -m32 -L/opt/intel/compilers\_and\_libraries\_2017/linux/lib/ia32

C++ benchmarks:

icpc -m32 -L/opt/intel/compilers\_and\_libraries\_2017/linux/lib/ia32

## Base Portability Flags

400.perlbench: -D\_FILE\_OFFSET\_BITS=64 -DSPEC\_CPU\_LINUX\_IA32

401.bzip2: -D\_FILE\_OFFSET\_BITS=64

403.gcc: -D\_FILE\_OFFSET\_BITS=64

429.mcf: -D\_FILE\_OFFSET\_BITS=64

445.gobmk: -D\_FILE\_OFFSET\_BITS=64

456.hmmer: -D\_FILE\_OFFSET\_BITS=64

458.sjeng: -D\_FILE\_OFFSET\_BITS=64

462.libquantum: -D\_FILE\_OFFSET\_BITS=64 -DSPEC\_CPU\_LINUX

464.h264ref: -D\_FILE\_OFFSET\_BITS=64

471.omnetpp: -D\_FILE\_OFFSET\_BITS=64

Continued on next page

Standard Performance Evaluation Corporation

info@spec.org

http://www.spec.org/

Page 4



# SPEC CINT2006 Result

Copyright 2006-2017 Standard Performance Evaluation Corporation

Dell Inc.

SPECint\_rate2006 = 3560

PowerEdge R940 (Intel Xeon Gold 6140, 2.30 GHz)

SPECint\_rate\_base2006 = 3370

CPU2006 license: 55

Test date: May-2017

Test sponsor: Dell Inc.

Hardware Availability: Jul-2017

Tested by: Dell Inc.

Software Availability: Nov-2016

## Base Portability Flags (Continued)

473.astar: -D\_FILE\_OFFSET\_BITS=64  
483.xalancbmk: -D\_FILE\_OFFSET\_BITS=64 -DSPEC\_CPU\_LINUX

## Base Optimization Flags

C benchmarks:

-xCORE-AVX512 -ipo -O3 -no-prec-div -qopt-prefetch  
-qopt-mem-layout-trans=3

C++ benchmarks:

-xCORE-AVX512 -ipo -O3 -no-prec-div -qopt-prefetch  
-qopt-mem-layout-trans=3 -Wl,-z,muldefs -L/shl0.2 -lsmartheap

## Base Other Flags

C benchmarks:

403.gcc: -Dalloca=\_alloca

## Peak Compiler Invocation

C benchmarks (except as noted below):

icc -m32 -L/opt/intel/compilers\_and\_libraries\_2017/linux/lib/ia32

400.perlbench: icc -m64

401.bzip2: icc -m64

456.hmmer: icc -m64

458.sjeng: icc -m64

C++ benchmarks:

icpc -m32 -L/opt/intel/compilers\_and\_libraries\_2017/linux/lib/ia32

## Peak Portability Flags

400.perlbench: -DSPEC\_CPU\_LP64 -DSPEC\_CPU\_LINUX\_X64

401.bzip2: -DSPEC\_CPU\_LP64

403.gcc: -D\_FILE\_OFFSET\_BITS=64

429.mcf: -D\_FILE\_OFFSET\_BITS=64

Continued on next page



# SPEC CINT2006 Result

Copyright 2006-2017 Standard Performance Evaluation Corporation

Dell Inc.

SPECint\_rate2006 = 3560

PowerEdge R940 (Intel Xeon Gold 6140, 2.30 GHz)

SPECint\_rate\_base2006 = 3370

CPU2006 license: 55

Test date: May-2017

Test sponsor: Dell Inc.

Hardware Availability: Jul-2017

Tested by: Dell Inc.

Software Availability: Nov-2016

## Peak Portability Flags (Continued)

445.gobmk: -D\_FILE\_OFFSET\_BITS=64  
 456.hmmer: -DSPEC\_CPU\_LP64  
 458.sjeng: -DSPEC\_CPU\_LP64  
 462.libquantum: -D\_FILE\_OFFSET\_BITS=64 -DSPEC\_CPU\_LINUX  
 464.h264ref: -D\_FILE\_OFFSET\_BITS=64  
 471.omnetpp: -D\_FILE\_OFFSET\_BITS=64  
 473.astar: -D\_FILE\_OFFSET\_BITS=64  
 483.xalancbmk: -D\_FILE\_OFFSET\_BITS=64 -DSPEC\_CPU\_LINUX

## Peak Optimization Flags

C benchmarks:

400.perlbench: -prof-gen(pass 1) -prof-use(pass 2) -xCORE-AVX512(pass 2)  
 -par-num-threads=1(pass 1) -ipo(pass 2) -O3(pass 2)  
 -no-prec-div(pass 2) -auto-ilp32 -qopt-mem-layout-trans=3

401.bzip2: -prof-gen(pass 1) -prof-use(pass 2) -xCORE-AVX512(pass 2)  
 -par-num-threads=1(pass 1) -ipo(pass 2) -O3(pass 2)  
 -no-prec-div(pass 2) -qopt-prefetch -auto-ilp32  
 -qopt-mem-layout-trans=3

403.gcc: basepeak = yes

429.mcf: basepeak = yes

445.gobmk: basepeak = yes

456.hmmer: -xCORE-AVX512 -ipo -O3 -no-prec-div -unroll2 -auto-ilp32  
 -qopt-mem-layout-trans=3

458.sjeng: -prof-gen(pass 1) -prof-use(pass 2) -xCORE-AVX512(pass 2)  
 -par-num-threads=1(pass 1) -ipo(pass 2) -O3(pass 2)  
 -no-prec-div(pass 2) -unroll4 -auto-ilp32  
 -qopt-mem-layout-trans=3

462.libquantum: basepeak = yes

464.h264ref: -prof-gen(pass 1) -prof-use(pass 2) -xCORE-AVX512(pass 2)  
 -par-num-threads=1(pass 1) -ipo(pass 2) -O3(pass 2)  
 -no-prec-div(pass 2) -unroll2 -qopt-mem-layout-trans=3

C++ benchmarks:

471.omnetpp: -prof-gen(pass 1) -prof-use(pass 2) -xCORE-AVX512(pass 2)  
 -par-num-threads=1(pass 1) -ipo(pass 2) -O3(pass 2)  
 -no-prec-div(pass 2)  
 -qopt-ra-region-strategy=block  
 -qopt-mem-layout-trans=3 -Wl,-z,muldefs

Continued on next page



# SPEC CINT2006 Result

Copyright 2006-2017 Standard Performance Evaluation Corporation

Dell Inc.

SPECint\_rate2006 = 3560

PowerEdge R940 (Intel Xeon Gold 6140, 2.30 GHz)

SPECint\_rate\_base2006 = 3370

CPU2006 license: 55

Test date: May-2017

Test sponsor: Dell Inc.

Hardware Availability: Jul-2017

Tested by: Dell Inc.

Software Availability: Nov-2016

## Peak Optimization Flags (Continued)

471.omnetpp (continued):  
-L/sh10.2 -lsmartheap

473.astar: basepeak = yes

483.xalancbmk: basepeak = yes

## Peak Other Flags

C benchmarks:

403.gcc: -Dalloca=\_alloca

The flags files that were used to format this result can be browsed at

<http://www.spec.org/cpu2006/flags/Intel-ic17.0-official-linux64-revF.html>

<http://www.spec.org/cpu2006/flags/Dell-Platform-Flags-PowerEdge14G-revB.html>

You can also download the XML flags sources by saving the following links:

<http://www.spec.org/cpu2006/flags/Intel-ic17.0-official-linux64-revF.xml>

<http://www.spec.org/cpu2006/flags/Dell-Platform-Flags-PowerEdge14G-revB.xml>

SPEC and SPECint are registered trademarks of the Standard Performance Evaluation Corporation. All other brand and product names appearing in this result are trademarks or registered trademarks of their respective holders.

For questions about this result, please contact the tester.  
For other inquiries, please contact [webmaster@spec.org](mailto:webmaster@spec.org).

Tested with SPEC CPU2006 v1.2.

Report generated on Wed Jul 12 12:12:48 2017 by SPEC CPU2006 PS/PDF formatter v6932.

Originally published on 11 July 2017.