



SPEC® CINT2006 Result

Copyright 2006-2017 Standard Performance Evaluation Corporation

Huawei

SPECint®2006 = 74.8

Huawei XH620 V3 (Intel Xeon E5-2699A v4)

SPECint_base2006 = 72.2

CPU2006 license: 3175

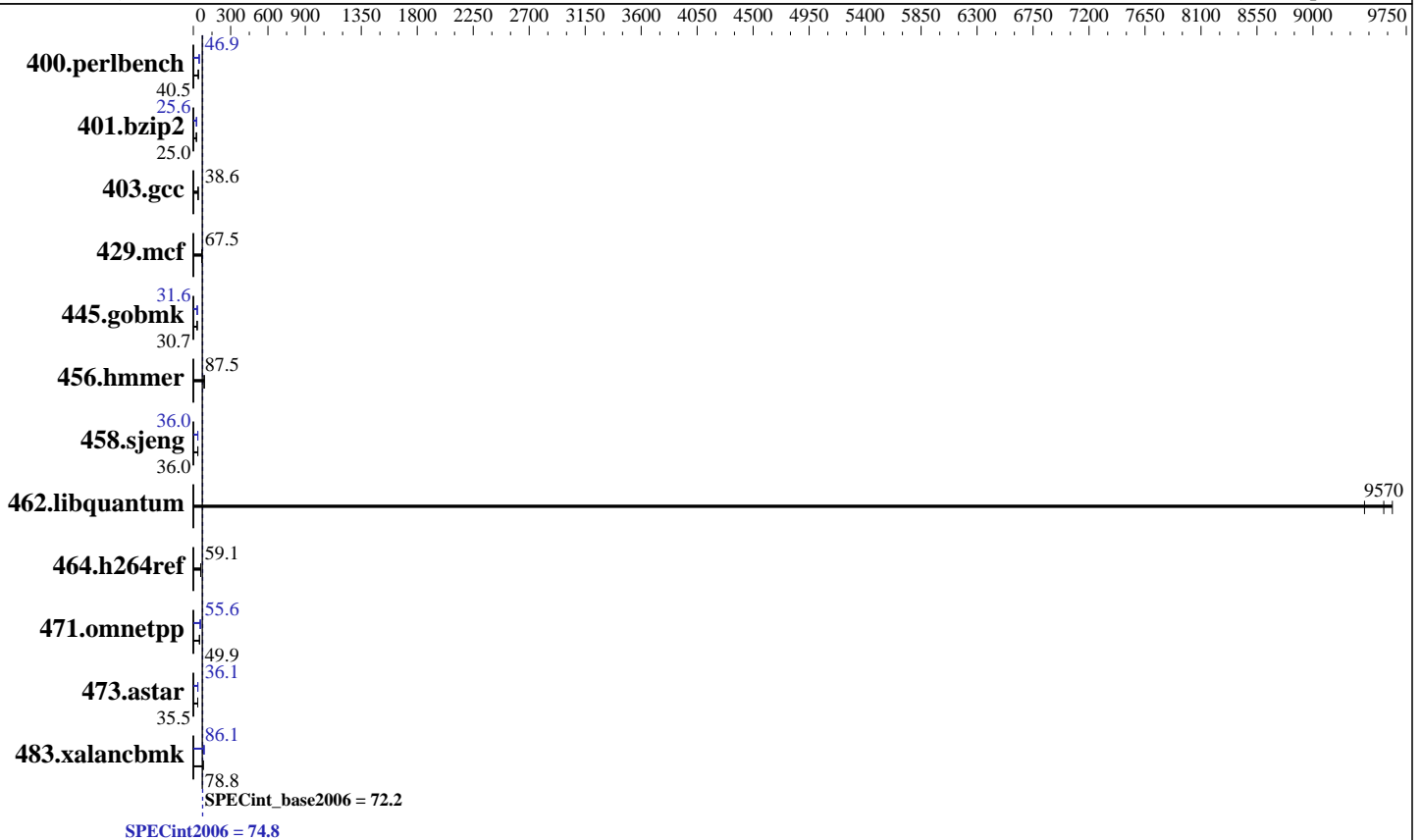
Test date: May-2017

Test sponsor: Huawei

Hardware Availability: Apr-2016

Tested by: Huawei

Software Availability: Sep-2016



Hardware

CPU Name: Intel Xeon E5-2699A v4
 CPU Characteristics: Intel Turbo Boost Technology up to 3.60 GHz
 CPU MHz: 2400
 FPU: Integrated
 CPU(s) enabled: 44 cores, 2 chips, 22 cores/chip
 CPU(s) orderable: 1,2 chip
 Primary Cache: 32 KB I + 32 KB D on chip per core
 Secondary Cache: 256 KB I+D on chip per core
 L3 Cache: 55 MB I+D on chip per chip
 Other Cache: None
 Memory: 256 GB (16 x 16 GB 2Rx8 PC4-2400T-R)
 Disk Subsystem: 1 x 1000 GB SATA, 7200 RPM
 Other Hardware: None

Software

Operating System: Red Hat Enterprise Linux Server release 7.2 (Maipo)
 Compiler: 3.10.0-327.el7.x86_64 C/C++: Version 17.0.0.098 of Intel C/C++ Compiler for Linux
 Auto Parallel: Yes
 File System: xfs
 System State: Run level 3 (multi-user)
 Base Pointers: 32/64-bit
 Peak Pointers: 32/64-bit
 Other Software: Microquill SmartHeap V10.2



SPEC CINT2006 Result

Copyright 2006-2017 Standard Performance Evaluation Corporation

Huawei

SPECint2006 = 74.8

Huawei XH620 V3 (Intel Xeon E5-2699A v4)

SPECint_base2006 = 72.2

CPU2006 license: 3175
Test sponsor: Huawei
Tested by: Huawei

Test date: May-2017
Hardware Availability: Apr-2016
Software Availability: Sep-2016

Results Table

Benchmark	Base						Peak					
	Seconds	Ratio	Seconds	Ratio	Seconds	Ratio	Seconds	Ratio	Seconds	Ratio	Seconds	Ratio
400.perlbench	246	39.7	241	40.6	<u>241</u>	<u>40.5</u>	208	47.0	209	46.7	<u>208</u>	<u>46.9</u>
401.bzip2	385	25.1	<u>386</u>	<u>25.0</u>	386	25.0	377	25.6	<u>377</u>	<u>25.6</u>	378	25.5
403.gcc	208	38.7	<u>208</u>	<u>38.6</u>	209	38.6	208	38.7	<u>208</u>	<u>38.6</u>	209	38.6
429.mcf	<u>135</u>	<u>67.5</u>	136	67.3	135	67.6	<u>135</u>	<u>67.5</u>	136	67.3	135	67.6
445.gobmk	341	30.8	<u>342</u>	<u>30.7</u>	342	30.7	331	31.6	<u>332</u>	<u>31.6</u>	332	31.6
456.hmmer	107	87.5	107	87.4	<u>107</u>	<u>87.5</u>	107	87.5	107	87.4	<u>107</u>	<u>87.5</u>
458.sjeng	336	36.0	336	36.0	<u>336</u>	<u>36.0</u>	<u>336</u>	<u>36.0</u>	337	35.9	335	36.1
462.libquantum	<u>2.17</u>	<u>9570</u>	2.20	9410	2.15	9640	<u>2.17</u>	<u>9570</u>	2.20	9410	2.15	9640
464.h264ref	375	59.0	374	59.2	<u>374</u>	<u>59.1</u>	375	59.0	374	59.2	<u>374</u>	<u>59.1</u>
471.omnetpp	<u>125</u>	<u>49.9</u>	126	49.6	125	49.9	113	55.5	<u>112</u>	<u>55.6</u>	110	56.7
473.astar	<u>198</u>	<u>35.5</u>	198	35.4	198	35.5	<u>194</u>	<u>36.1</u>	195	36.0	194	36.3
483.xalancbmk	<u>87.6</u>	<u>78.8</u>	88.2	78.3	87.4	78.9	80.0	86.2	80.8	85.4	<u>80.2</u>	<u>86.1</u>

Results appear in the order in which they were run. Bold underlined text indicates a median measurement.

Submit Notes

The config file option 'submit' was used.

Operating System Notes

Stack size set to unlimited using "ulimit -s unlimited"

Platform Notes

BIOS configuration:
Set Power Efficiency Mode to Custom
Set Snoop Mode to ES mode
Set Patrol Scrub to Disable
Set Hyper-Threading to Disable
Sysinfo program /spec17/config/sysinfo.rev6993
Revision 6993 of 2015-11-06 (b5e8d4b4eb51ed28d7f98696cbe290c1)
running on localhost.localdomain Tue May 16 01:46:36 2017

This section contains SUT (System Under Test) info as seen by some common utilities. To remove or add to this section, see: <http://www.spec.org/cpu2006/Docs/config.html#sysinfo>

From /proc/cpuinfo
model name : Intel(R) Xeon(R) CPU E5-2699A v4 @ 2.40GHz
2 "physical id"s (chips)
44 "processors"
cores, siblings (Caution: counting these is hw and system dependent. The following excerpts from /proc/cpuinfo might not be reliable. Use with
Continued on next page



SPEC CINT2006 Result

Copyright 2006-2017 Standard Performance Evaluation Corporation

Huawei

SPECint2006 = 74.8

Huawei XH620 V3 (Intel Xeon E5-2699A v4)

SPECint_base2006 = 72.2

CPU2006 license: 3175

Test date: May-2017

Test sponsor: Huawei

Hardware Availability: Apr-2016

Tested by: Huawei

Software Availability: Sep-2016

Platform Notes (Continued)

```

caution.)
  cpu cores : 22
  siblings  : 22
  physical 0: cores 0 1 2 3 4 5 8 9 10 11 12 16 17 18 19 20 21 24 25 26 27
                28
  physical 1: cores 0 1 2 3 4 5 8 9 10 11 12 16 17 18 19 20 21 24 25 26 27
                28
  cache size : 56320 KB

```

```

From /proc/meminfo
MemTotal:      263566508 kB
HugePages_Total:      0
Hugepagesize:    2048 kB

```

```

From /etc/*release* /etc/*version*
os-release:
NAME="Red Hat Enterprise Linux Server"
VERSION="7.2 (Maipo)"
ID="rhel"
ID_LIKE="fedora"
VERSION_ID="7.2"
PRETTY_NAME="Red Hat Enterprise Linux Server 7.2 (Maipo)"
ANSI_COLOR="0;31"
CPE_NAME="cpe:/o:redhat:enterprise_linux:7.2:GA:server"
redhat-release: Red Hat Enterprise Linux Server release 7.2 (Maipo)
system-release: Red Hat Enterprise Linux Server release 7.2 (Maipo)
system-release-cpe: cpe:/o:redhat:enterprise_linux:7.2:ga:server

```

```

uname -a:
Linux localhost.localdomain 3.10.0-327.el7.x86_64 #1 SMP Thu Oct 29 17:29:29
EDT 2015 x86_64 x86_64 x86_64 GNU/Linux

```

run-level 3 May 15 18:20

```

SPEC is set to: /spec17
Filesystem      Type  Size  Used Avail Use% Mounted on
/dev/sda2       xfs   254G   68G  186G  27% /

```

Additional information from dmidecode:

Warning: Use caution when you interpret this section. The 'dmidecode' program reads system data which is "intended to allow hardware to be accurately determined", but the intent may not be met, as there are frequent changes to hardware, firmware, and the "DMTF SMBIOS" standard.

BIOS Insyde Corp. 3.31 08/22/2016

Memory:
16x Samsung M393A2K43BB1-CRC 16 GB 2 rank 2400 MHz

(End of data from sysinfo program)



SPEC CINT2006 Result

Copyright 2006-2017 Standard Performance Evaluation Corporation

Huawei

SPECint2006 = 74.8

Huawei XH620 V3 (Intel Xeon E5-2699A v4)

SPECint_base2006 = 72.2

CPU2006 license: 3175

Test sponsor: Huawei

Tested by: Huawei

Test date: May-2017

Hardware Availability: Apr-2016

Software Availability: Sep-2016

General Notes

Environment variables set by runspec before the start of the run:
KMP_AFFINITY = "granularity=fine,compact"
LD_LIBRARY_PATH = "/spec17/libs/32:/spec17/libs/64:/spec17/sh10.2"
OMP_NUM_THREADS = "44"

Binaries compiled on a system with 1x Intel Core i7-4790 CPU + 32GB RAM memory using Redhat Enterprise Linux 7.2
Transparent Huge Pages enabled with:
echo always > /sys/kernel/mm/transparent_hugepage/enabled
runspec command invoked through numactl i.e.:
numactl --interleave=all runspec <etc>
The Huawei XH622 V3 and Huawei XH628 V3 and Huawei XH620 V3 are electronically equivalent.
The results have been measured on a Huawei XH620 V3 model.

Base Compiler Invocation

C benchmarks:
icc -m64

C++ benchmarks:
icpc -m64

Base Portability Flags

400.perlbench: -DSPEC_CPU_LP64 -DSPEC_CPU_LINUX_X64
401.bzip2: -DSPEC_CPU_LP64
403.gcc: -DSPEC_CPU_LP64
429.mcf: -DSPEC_CPU_LP64
445.gobmk: -DSPEC_CPU_LP64
456.hmmmer: -DSPEC_CPU_LP64
458.sjeng: -DSPEC_CPU_LP64
462.libquantum: -DSPEC_CPU_LP64 -DSPEC_CPU_LINUX
464.h264ref: -DSPEC_CPU_LP64
471.omnetpp: -DSPEC_CPU_LP64
473.astar: -DSPEC_CPU_LP64
483.xalanbmk: -DSPEC_CPU_LP64 -DSPEC_CPU_LINUX

Base Optimization Flags

C benchmarks:
-xCORE-AVX2 -ipo -O3 -no-prec-div -parallel -qopt-prefetch
-auto-p32

C++ benchmarks:
-xCORE-AVX2 -ipo -O3 -no-prec-div -qopt-prefetch -auto-p32
-Wl,-z,muldefs -L/sh10.2 -lsmartheap64



SPEC CINT2006 Result

Copyright 2006-2017 Standard Performance Evaluation Corporation

Huawei

SPECint2006 = 74.8

Huawei XH620 V3 (Intel Xeon E5-2699A v4)

SPECint_base2006 = 72.2

CPU2006 license: 3175
Test sponsor: Huawei
Tested by: Huawei

Test date: May-2017
Hardware Availability: Apr-2016
Software Availability: Sep-2016

Base Other Flags

C benchmarks:

403.gcc: -Dalloca=_alloca

Peak Compiler Invocation

C benchmarks (except as noted below):

icc -m64

400.perlbench: icc -m32 -L/opt/intel/compilers_and_libraries_2017/linux/lib/ia32

445.gobmk: icc -m32 -L/opt/intel/compilers_and_libraries_2017/linux/lib/ia32

C++ benchmarks (except as noted below):

icc -m32 -L/opt/intel/compilers_and_libraries_2017/linux/lib/ia32

473.astar: icpc -m64

Peak Portability Flags

400.perlbench: -D_FILE_OFFSET_BITS=64 -DSPEC_CPU_LINUX_IA32

401.bzip2: -DSPEC_CPU_LP64

403.gcc: -DSPEC_CPU_LP64

429.mcf: -DSPEC_CPU_LP64

445.gobmk: -D_FILE_OFFSET_BITS=64

456.hmmmer: -DSPEC_CPU_LP64

458.sjeng: -DSPEC_CPU_LP64

462.libquantum: -DSPEC_CPU_LP64 -DSPEC_CPU_LINUX

464.h264ref: -DSPEC_CPU_LP64

471.omnetpp: -D_FILE_OFFSET_BITS=64

473.astar: -DSPEC_CPU_LP64

483.xalancbmk: -D_FILE_OFFSET_BITS=64 -DSPEC_CPU_LINUX

Peak Optimization Flags

C benchmarks:

400.perlbench: -prof-gen(pass 1) -prof-use(pass 2) -xCORE-AVX2(pass 2)
-par-num-threads=1(pass 1) -ipo(pass 2) -O3(pass 2)
-no-prec-div(pass 2) -qopt-prefetch

401.bzip2: -prof-gen(pass 1) -prof-use(pass 2) -xCORE-AVX2(pass 2)
-par-num-threads=1(pass 1) -ipo(pass 2) -O3(pass 2)
-no-prec-div -auto-ilp32 -qopt-prefetch

Continued on next page



SPEC CINT2006 Result

Copyright 2006-2017 Standard Performance Evaluation Corporation

Huawei

SPECint2006 = 74.8

Huawei XH620 V3 (Intel Xeon E5-2699A v4)

SPECint_base2006 = 72.2

CPU2006 license: 3175

Test sponsor: Huawei

Tested by: Huawei

Test date: May-2017

Hardware Availability: Apr-2016

Software Availability: Sep-2016

Peak Optimization Flags (Continued)

403.gcc: basepeak = yes

429.mcf: basepeak = yes

445.gobmk: -prof-gen(pass 1) -prof-use(pass 2) -xCORE-AVX2(pass 2)
-par-num-threads=1(pass 1) -ipo(pass 2) -O3(pass 2)
-no-prec-div(pass 2)

456.hmmer: basepeak = yes

458.sjeng: -prof-gen(pass 1) -prof-use(pass 2) -xCORE-AVX2(pass 2)
-par-num-threads=1(pass 1) -ipo(pass 2) -O3(pass 2)
-no-prec-div(pass 2) -unroll4

462.libquantum: basepeak = yes

464.h264ref: basepeak = yes

C++ benchmarks:

471.omnetpp: -prof-gen(pass 1) -prof-use(pass 2) -xCORE-AVX2(pass 2)
-par-num-threads=1(pass 1) -ipo(pass 2) -O3(pass 2)
-no-prec-div(pass 2) -qopt-ra-region-strategy=block
-Wl,-z,muldefs -L/sh10.2 -lsmarheap

473.astar: -xCORE-AVX2 -ipo -O3 -no-prec-div -qopt-prefetch
-auto-p32 -Wl,-z,muldefs -L/sh10.2 -lsmarheap64

483.xalancbmk: -xCORE-AVX2 -ipo -O3 -no-prec-div -qopt-prefetch
-Wl,-z,muldefs -L/sh10.2 -lsmarheap

Peak Other Flags

C benchmarks:

403.gcc: -Dalloca=_alloca

The flags files that were used to format this result can be browsed at

<http://www.spec.org/cpu2006/flags/Intel-ic17.0-official-linux64.html>

<http://www.spec.org/cpu2006/flags/Huawei-Platform-Settings-BDW-V1.0.html>

You can also download the XML flags sources by saving the following links:

<http://www.spec.org/cpu2006/flags/Intel-ic17.0-official-linux64.xml>

<http://www.spec.org/cpu2006/flags/Huawei-Platform-Settings-BDW-V1.0.xml>



SPEC CINT2006 Result

Copyright 2006-2017 Standard Performance Evaluation Corporation

Huawei

SPECint2006 = 74.8

Huawei XH620 V3 (Intel Xeon E5-2699A v4)

SPECint_base2006 = 72.2

CPU2006 license: 3175

Test sponsor: Huawei

Tested by: Huawei

Test date: May-2017

Hardware Availability: Apr-2016

Software Availability: Sep-2016

SPEC and SPECint are registered trademarks of the Standard Performance Evaluation Corporation. All other brand and product names appearing in this result are trademarks or registered trademarks of their respective holders.

For questions about this result, please contact the tester.
For other inquiries, please contact webmaster@spec.org.

Tested with SPEC CPU2006 v1.2.
Report generated on Mon Jun 12 18:39:01 2017 by SPEC CPU2006 PS/PDF formatter v6932.
Originally published on 12 June 2017.