



SPEC[®] CFP2006 Result

Copyright 2006-2016 Standard Performance Evaluation Corporation

Lenovo Group Limited

SPECfp[®]2006 = **120**

Lenovo System x3850 X6
(3.20 GHz, Intel Xeon E7-8893 v4)

SPECfp_base2006 = **115**

CPU2006 license: 9017

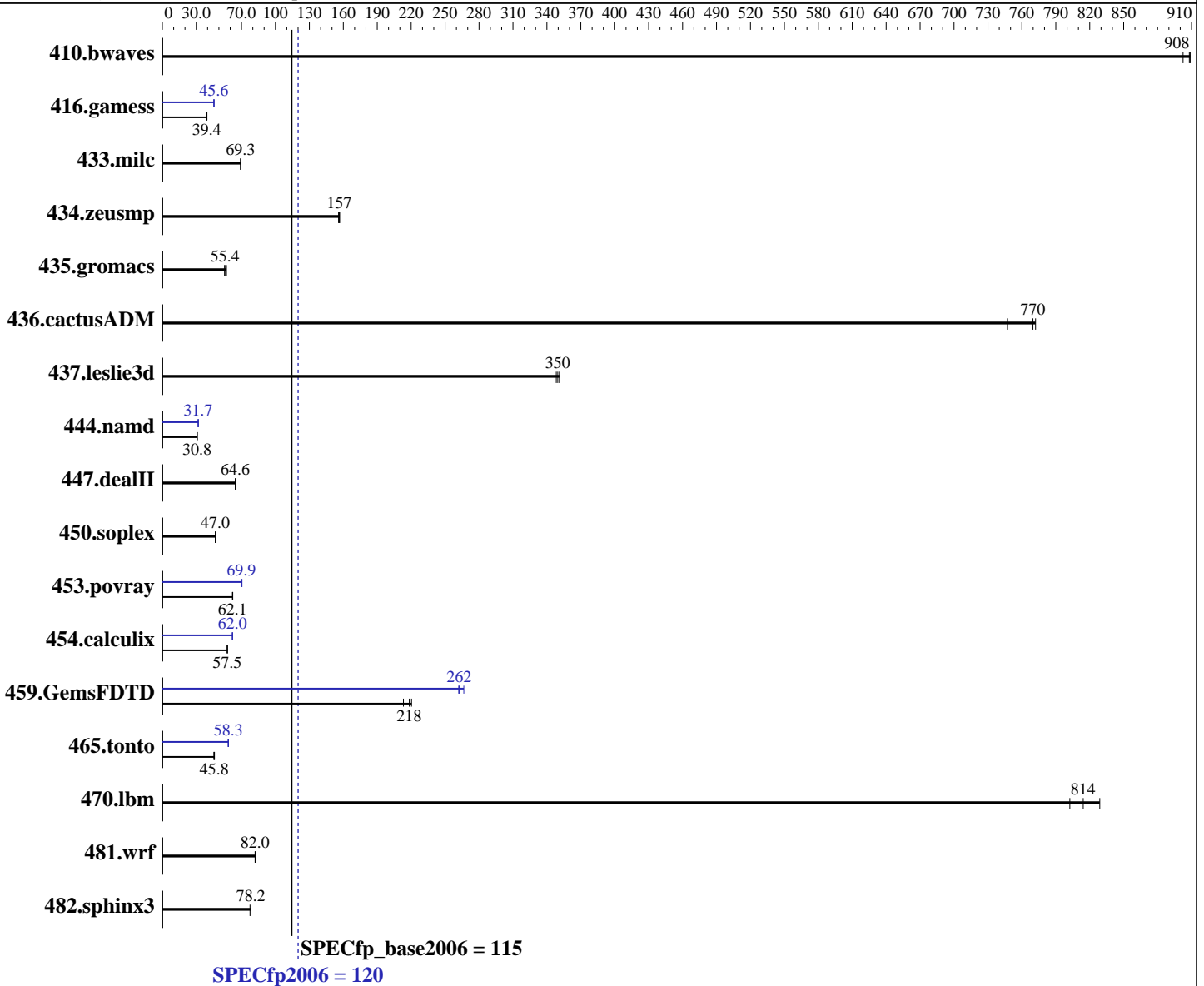
Test date: Aug-2016

Test sponsor: Lenovo Group Limited

Hardware Availability: Jun-2016

Tested by: Lenovo Group Limited

Software Availability: Dec-2015



Hardware		Software	
CPU Name:	Intel Xeon E7-8893 v4	Operating System:	SUSE Linux Enterprise Server 12 SP1 (x86_64) Kernel 3.12.49-11-default
CPU Characteristics:	Intel Turbo Boost Technology up to 3.50 GHz	Compiler:	C/C++: Version 16.0.0.101 of Intel C++ Studio XE for Linux; Fortran: Version 16.0.0.101 of Intel Fortran Studio XE for Linux
CPU MHz:	3200	Auto Parallel:	Yes
FPU:	Integrated	File System:	xfs
CPU(s) enabled:	16 cores, 4 chips, 4 cores/chip	System State:	Run level 3 (multi-user)
CPU(s) orderable:	2,4 chips		
Primary Cache:	32 KB I + 32 KB D on chip per core		
Secondary Cache:	256 KB I+D on chip per core		

Continued on next page

Continued on next page



SPEC CFP2006 Result

Copyright 2006-2016 Standard Performance Evaluation Corporation

Lenovo Group Limited

SPECfp2006 = **120**

Lenovo System x3850 X6
(3.20 GHz, Intel Xeon E7-8893 v4)

SPECfp_base2006 = **115**

CPU2006 license: 9017

Test date: Aug-2016

Test sponsor: Lenovo Group Limited

Hardware Availability: Jun-2016

Tested by: Lenovo Group Limited

Software Availability: Dec-2015

L3 Cache: 60 MB I+D on chip per chip
Other Cache: None
Memory: 512 GB (32 x 16 GB 2Rx4 PC4-2133P-R, running at 1600 MHz)
Disk Subsystem: 1 x 800 GB SATA SSD
Other Hardware: None

Base Pointers: 64-bit
Peak Pointers: 32/64-bit
Other Software: None

Results Table

Benchmark	Base						Peak					
	Seconds	Ratio	Seconds	Ratio	Seconds	Ratio	Seconds	Ratio	Seconds	Ratio	Seconds	Ratio
410.bwaves	15.1	903	15.0	908	15.0	909	15.1	903	15.0	908	15.0	909
416.gamess	498	39.3	496	39.5	497	39.4	429	45.6	429	45.6	429	45.7
433.milc	133	69.3	132	69.3	133	69.3	133	69.3	132	69.3	133	69.3
434.zeusmp	58.4	156	58.1	157	58.1	157	58.4	156	58.1	157	58.1	157
435.gromacs	129	55.4	126	56.7	130	55.0	129	55.4	126	56.7	130	55.0
436.cactusADM	15.5	772	16.0	747	15.5	770	15.5	772	16.0	747	15.5	770
437.leslie3d	26.8	351	26.9	350	27.0	348	26.8	351	26.9	350	27.0	348
444.namd	261	30.7	261	30.8	261	30.8	253	31.7	253	31.7	253	31.7
447.dealII	177	64.5	177	64.6	176	65.1	177	64.5	177	64.6	176	65.1
450.soplex	178	47.0	178	47.0	178	47.0	178	47.0	178	47.0	178	47.0
453.povray	85.4	62.3	85.8	62.0	85.6	62.1	75.5	70.4	76.1	69.9	76.1	69.9
454.calculix	144	57.5	143	57.6	144	57.3	133	61.9	133	62.0	133	62.0
459.GemsFDTD	48.6	218	48.2	220	49.8	213	40.5	262	39.8	267	40.4	262
465.tonto	216	45.6	213	46.1	215	45.8	169	58.3	169	58.3	169	58.4
470.lbm	16.6	829	17.1	802	16.9	814	16.6	829	17.1	802	16.9	814
481.wrf	136	82.0	136	82.0	135	82.6	136	82.0	136	82.0	135	82.6
482.sphinx3	249	78.2	249	78.4	251	77.5	249	78.2	249	78.4	251	77.5

Results appear in the order in which they were run. Bold underlined text indicates a median measurement.

Operating System Notes

Stack size set to unlimited using "ulimit -s unlimited"

Platform Notes

BIOS Configuration:

Operating Mode set to "Maximum Performance"

Hyper-Threading set to Disable

Sysinfo program /home/cpu2006-1.2-ic16.0/config/sysinfo.rev6914

\$Rev: 6914 \$ \$Date:: 2014-06-25 #\$ e3fbb8667b5a285932ceab81e28219e1

running on Draco-02 Mon Aug 8 18:53:12 2016

This section contains SUT (System Under Test) info as seen by some common utilities. To remove or add to this section, see:

Continued on next page



SPEC CFP2006 Result

Copyright 2006-2016 Standard Performance Evaluation Corporation

Lenovo Group Limited

SPECfp2006 = 120

Lenovo System x3850 X6
(3.20 GHz, Intel Xeon E7-8893 v4)

SPECfp_base2006 = 115

CPU2006 license: 9017

Test date: Aug-2016

Test sponsor: Lenovo Group Limited

Hardware Availability: Jun-2016

Tested by: Lenovo Group Limited

Software Availability: Dec-2015

Platform Notes (Continued)

<http://www.spec.org/cpu2006/Docs/config.html#sysinfo>

From /proc/cpuinfo

model name : Intel(R) Xeon(R) CPU E7-8893 v4 @ 3.20GHz

4 "physical id"s (chips)

16 "processors"

cores, siblings (Caution: counting these is hw and system dependent. The following excerpts from /proc/cpuinfo might not be reliable. Use with caution.)

cpu cores : 4

siblings : 4

physical 0: cores 12 13 25 26

physical 1: cores 12 13 25 26

physical 2: cores 12 13 25 26

physical 3: cores 12 13 25 26

cache size : 61440 KB

From /proc/meminfo

MemTotal: 529169324 kB

HugePages_Total: 0

Hugepagesize: 2048 kB

From /etc/*release* /etc/*version*

SuSE-release:

SUSE Linux Enterprise Server 12 (x86_64)

VERSION = 12

PATCHLEVEL = 1

This file is deprecated and will be removed in a future service pack or release.

Please check /etc/os-release for details about this release.

os-release:

NAME="SLES"

VERSION="12-SP1"

VERSION_ID="12.1"

PRETTY_NAME="SUSE Linux Enterprise Server 12 SP1"

ID="sles"

ANSI_COLOR="0;32"

CPE_NAME="cpe:/o:suse:sles:12:sp1"

uname -a:

Linux Draco-02 3.12.49-11-default #1 SMP Wed Nov 11 20:52:43 UTC 2015

(8d714a0) x86_64 x86_64 x86_64 GNU/Linux

run-level 3 Aug 8 14:02

SPEC is set to: /home/cpu2006-1.2-ic16.0

Filesystem Type Size Used Avail Use% Mounted on

/dev/sda4 xfs 688G 5.1G 683G 1% /home

Additional information from dmidecode:

Warning: Use caution when you interpret this section. The 'dmidecode' program reads system data which is "intended to allow hardware to be accurately

Continued on next page



SPEC CFP2006 Result

Copyright 2006-2016 Standard Performance Evaluation Corporation

Lenovo Group Limited

SPECfp2006 = 120

Lenovo System x3850 X6
(3.20 GHz, Intel Xeon E7-8893 v4)

SPECfp_base2006 = 115

CPU2006 license: 9017

Test date: Aug-2016

Test sponsor: Lenovo Group Limited

Hardware Availability: Jun-2016

Tested by: Lenovo Group Limited

Software Availability: Dec-2015

Platform Notes (Continued)

determined", but the intent may not be met, as there are frequent changes to hardware, firmware, and the "DMTF SMBIOS" standard.

BIOS LENOVO -[A9E135CUS-3.10]- 06/16/2016

Memory:

64x NO DIMM Unknown

32x Samsung M393A2G40DB0-CPB 16 GB 2 rank 2133 MHz, configured at 1600 MHz

(End of data from sysinfo program)

General Notes

Environment variables set by runspec before the start of the run:

KMP_AFFINITY = "granularity=fine,compact"

LD_LIBRARY_PATH = "/home/cpu2006-1.2-ic16.0/libs/32:/home/cpu2006-1.2-ic16.0/libs/64:/home/cpu2006-1.2-ic16.0/sh"

OMP_NUM_THREADS = "16"

Binaries compiled on a system with 1x Intel Core i5-4670K CPU + 32GB memory using RedHat EL 7.1

Transparent Huge Pages disabled with:

echo never > /sys/kernel/mm/transparent_hugepage/enabled

Base Compiler Invocation

C benchmarks:

icc -m64

C++ benchmarks:

icpc -m64

Fortran benchmarks:

ifort -m64

Benchmarks using both Fortran and C:

icc -m64 ifort -m64

Base Portability Flags

410.bwaves: -DSPEC_CPU_LP64

416.gamess: -DSPEC_CPU_LP64

433.milc: -DSPEC_CPU_LP64

434.zeusmp: -DSPEC_CPU_LP64

435.gromacs: -DSPEC_CPU_LP64 -nofor_main

436.cactusADM: -DSPEC_CPU_LP64 -nofor_main

437.lelie3d: -DSPEC_CPU_LP64

444.namd: -DSPEC_CPU_LP64

Continued on next page

Standard Performance Evaluation Corporation

info@spec.org

http://www.spec.org/

Page 4



SPEC CFP2006 Result

Copyright 2006-2016 Standard Performance Evaluation Corporation

Lenovo Group Limited

SPECfp2006 = 120

Lenovo System x3850 X6
(3.20 GHz, Intel Xeon E7-8893 v4)

SPECfp_base2006 = 115

CPU2006 license: 9017

Test date: Aug-2016

Test sponsor: Lenovo Group Limited

Hardware Availability: Jun-2016

Tested by: Lenovo Group Limited

Software Availability: Dec-2015

Base Portability Flags (Continued)

```

447.deallI: -DSPEC_CPU_LP64
450.soplex: -DSPEC_CPU_LP64
453.povray: -DSPEC_CPU_LP64
454.calculix: -DSPEC_CPU_LP64 -nofor_main
459.GemsFDTD: -DSPEC_CPU_LP64
465.tonto: -DSPEC_CPU_LP64
470.lbm: -DSPEC_CPU_LP64
481.wrf: -DSPEC_CPU_LP64 -DSPEC_CPU_CASE_FLAG -DSPEC_CPU_LINUX
482.sphinx3: -DSPEC_CPU_LP64

```

Base Optimization Flags

C benchmarks:
-xCORE-AVX2 -ipo -O3 -no-prec-div -parallel -opt-prefetch
-ansi-alias

C++ benchmarks:
-xCORE-AVX2 -ipo -O3 -no-prec-div -opt-prefetch -ansi-alias

Fortran benchmarks:
-xCORE-AVX2 -ipo -O3 -no-prec-div -parallel -opt-prefetch

Benchmarks using both Fortran and C:
-xCORE-AVX2 -ipo -O3 -no-prec-div -parallel -opt-prefetch
-ansi-alias

Peak Compiler Invocation

C benchmarks:
icc -m64

C++ benchmarks:
icpc -m64

Fortran benchmarks:
ifort -m64

Benchmarks using both Fortran and C:
icc -m64 ifort -m64

Peak Portability Flags

Same as Base Portability Flags



SPEC CFP2006 Result

Copyright 2006-2016 Standard Performance Evaluation Corporation

Lenovo Group Limited

SPECfp2006 = 120

Lenovo System x3850 X6
(3.20 GHz, Intel Xeon E7-8893 v4)

SPECfp_base2006 = 115

CPU2006 license: 9017

Test date: Aug-2016

Test sponsor: Lenovo Group Limited

Hardware Availability: Jun-2016

Tested by: Lenovo Group Limited

Software Availability: Dec-2015

Peak Optimization Flags

C benchmarks:

433.milc: basepeak = yes

470.lbm: basepeak = yes

482.sphinx3: basepeak = yes

C++ benchmarks:

444.namd: -xCORE-AVX2(pass 2) -prof-gen:threadsafe(pass 1)
-ipo(pass 2) -O3(pass 2) -no-prec-div(pass 2)
-par-num-threads=1(pass 1) -prof-use(pass 2) -fno-alias
-auto-ilp32

447.dealII: basepeak = yes

450.soplex: basepeak = yes

453.povray: -xCORE-AVX2(pass 2) -prof-gen:threadsafe(pass 1)
-ipo(pass 2) -O3(pass 2) -no-prec-div(pass 2)
-par-num-threads=1(pass 1) -prof-use(pass 2) -unroll4
-ansi-alias

Fortran benchmarks:

410.bwaves: basepeak = yes

416.gamess: -xCORE-AVX2(pass 2) -prof-gen:threadsafe(pass 1)
-ipo(pass 2) -O3(pass 2) -no-prec-div(pass 2)
-par-num-threads=1(pass 1) -prof-use(pass 2) -unroll2
-inline-level=0 -scalar-rep-

434.zeusmp: basepeak = yes

437.leslie3d: basepeak = yes

459.GemsFDTD: -xCORE-AVX2(pass 2) -prof-gen:threadsafe(pass 1)
-ipo(pass 2) -O3(pass 2) -no-prec-div(pass 2)
-par-num-threads=1(pass 1) -prof-use(pass 2) -unroll2
-inline-level=0 -opt-prefetch -parallel

465.tonto: -xCORE-AVX2(pass 2) -prof-gen:threadsafe(pass 1)
-ipo(pass 2) -O3(pass 2) -no-prec-div(pass 2)
-par-num-threads=1(pass 1) -prof-use(pass 2) -inline-calloc
-opt-malloc-options=3 -auto -unroll4

Benchmarks using both Fortran and C:

Continued on next page



SPEC CFP2006 Result

Copyright 2006-2016 Standard Performance Evaluation Corporation

Lenovo Group Limited

SPECfp2006 = 120

Lenovo System x3850 X6
(3.20 GHz, Intel Xeon E7-8893 v4)

SPECfp_base2006 = 115

CPU2006 license: 9017

Test date: Aug-2016

Test sponsor: Lenovo Group Limited

Hardware Availability: Jun-2016

Tested by: Lenovo Group Limited

Software Availability: Dec-2015

Peak Optimization Flags (Continued)

435.gromacs: basepeak = yes

436.cactusADM: basepeak = yes

454.calculix: -xCORE-AVX2 -ipo -O3 -no-prec-div -auto-ilp32 -ansi-alias

481.wrf: basepeak = yes

The flags files that were used to format this result can be browsed at

<http://www.spec.org/cpu2006/flags/Intel-ic16.0-official-linux64.html>

<http://www.spec.org/cpu2006/flags/Lenovo-Platform-Flags-V1.2-BDW-B.html>

You can also download the XML flags sources by saving the following links:

<http://www.spec.org/cpu2006/flags/Intel-ic16.0-official-linux64.xml>

<http://www.spec.org/cpu2006/flags/Lenovo-Platform-Flags-V1.2-BDW-B.xml>

SPEC and SPECfp are registered trademarks of the Standard Performance Evaluation Corporation. All other brand and product names appearing in this result are trademarks or registered trademarks of their respective holders.

For questions about this result, please contact the tester.
For other inquiries, please contact webmaster@spec.org.

Tested with SPEC CPU2006 v1.2.
Report generated on Tue Oct 4 14:49:37 2016 by SPEC CPU2006 PS/PDF formatter v6932.
Originally published on 4 October 2016.