



# SPEC<sup>®</sup> CINT2006 Result

Copyright 2006-2016 Standard Performance Evaluation Corporation

## Lenovo Group Limited

SPECint<sup>®</sup>2006 = **72.5**

Lenovo ThinkServer RD650  
(2.60 GHz, Intel Xeon E5-2697A v4)

SPECint\_base2006 = **69.9**

CPU2006 license: 9017

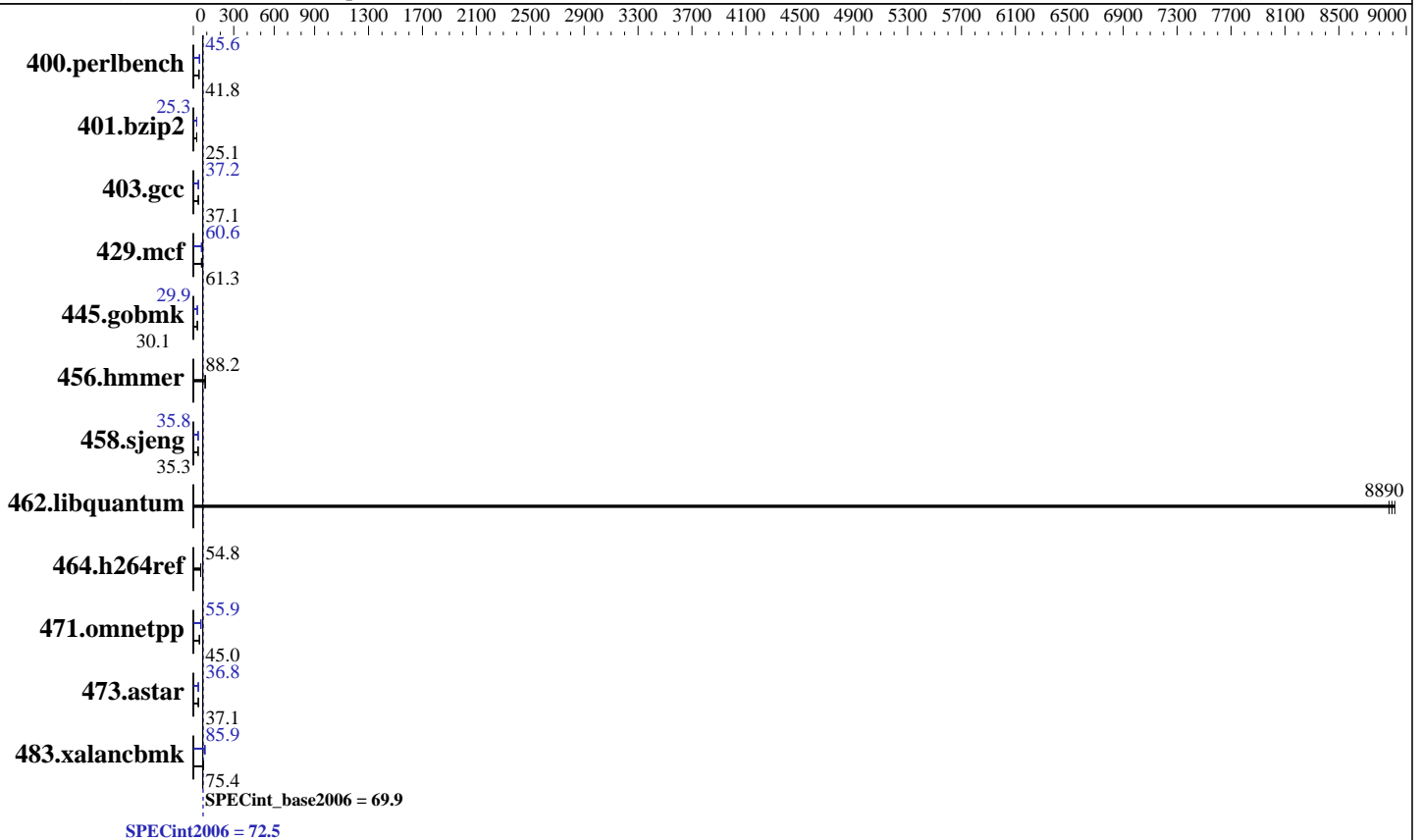
Test date: Jun-2016

Test sponsor: Lenovo Group Limited

Hardware Availability: Mar-2016

Tested by: Lenovo Group Limited

Software Availability: Dec-2015



### Hardware

CPU Name: Intel Xeon E5-2697A v4  
 CPU Characteristics: Intel Turbo Boost Technology up to 3.60 GHz  
 CPU MHz: 2600  
 FPU: Integrated  
 CPU(s) enabled: 32 cores, 2 chips, 16 cores/chip  
 CPU(s) orderable: 1,2 chips  
 Primary Cache: 32 KB I + 32 KB D on chip per core  
 Secondary Cache: 256 KB I+D on chip per core  
 L3 Cache: 40 MB I+D on chip per chip  
 Other Cache: None  
 Memory: 256 GB (16 x 16 GB 2Rx4 PC4-2400T-R)  
 Disk Subsystem: 1 x 800 GB SATA SSD  
 Other Hardware: None

### Software

Operating System: SUSE Linux Enterprise Server 12 SP1 (x86\_64)  
 Kernel 3.12.49-11-default  
 Compiler: C/C++; Version 16.0.0.101 of Intel C++ Studio XE for Linux  
 Auto Parallel: Yes  
 File System: xfs  
 System State: Run level 3 (multi-user)  
 Base Pointers: 32/64-bit  
 Peak Pointers: 32/64-bit  
 Other Software: Microquill SmartHeap V10.2



# SPEC CINT2006 Result

Copyright 2006-2016 Standard Performance Evaluation Corporation

## Lenovo Group Limited

Lenovo ThinkServer RD650  
(2.60 GHz, Intel Xeon E5-2697A v4)

SPECint2006 = **72.5**

SPECint\_base2006 = **69.9**

CPU2006 license: 9017

Test sponsor: Lenovo Group Limited

Tested by: Lenovo Group Limited

Test date: Jun-2016

Hardware Availability: Mar-2016

Software Availability: Dec-2015

## Results Table

Benchmark	Base						Peak					
	Seconds	Ratio	Seconds	Ratio	Seconds	Ratio	Seconds	Ratio	Seconds	Ratio	Seconds	Ratio
400.perlbench	233	41.9	<b><u>234</u></b>	<b><u>41.8</u></b>	234	41.7	214	45.6	214	45.7	<b><u>214</u></b>	<b><u>45.6</u></b>
401.bzip2	386	25.0	384	25.1	<b><u>384</u></b>	<b><u>25.1</u></b>	<b><u>381</u></b>	<b><u>25.3</u></b>	381	25.3	382	25.3
403.gcc	<b><u>217</u></b>	<b><u>37.1</u></b>	217	37.1	217	37.1	215	37.4	216	37.2	<b><u>216</u></b>	<b><u>37.2</u></b>
429.mcf	151	60.2	147	62.2	<b><u>149</u></b>	<b><u>61.3</u></b>	149	61.4	<b><u>150</u></b>	<b><u>60.6</u></b>	151	60.5
445.gobmk	<b><u>349</u></b>	<b><u>30.1</u></b>	349	30.1	349	30.0	351	29.9	351	29.9	<b><u>351</u></b>	<b><u>29.9</u></b>
456.hammer	106	88.3	106	88.1	<b><u>106</u></b>	<b><u>88.2</u></b>	106	88.3	106	88.1	<b><u>106</u></b>	<b><u>88.2</u></b>
458.sjeng	342	35.4	343	35.3	<b><u>343</u></b>	<b><u>35.3</u></b>	<b><u>338</u></b>	<b><u>35.8</u></b>	338	35.8	338	35.8
462.libquantum	<b><u>2.33</u></b>	<b><u>8890</u></b>	2.32	8910	2.34	8870	<b><u>2.33</u></b>	<b><u>8890</u></b>	2.32	8910	2.34	8870
464.h264ref	403	54.9	406	54.6	<b><u>404</u></b>	<b><u>54.8</u></b>	403	54.9	406	54.6	<b><u>404</u></b>	<b><u>54.8</u></b>
471.omnetpp	135	46.3	<b><u>139</u></b>	<b><u>45.0</u></b>	140	44.5	<b><u>112</u></b>	<b><u>55.9</u></b>	112	55.8	112	55.9
473.astar	189	37.1	188	37.4	<b><u>189</u></b>	<b><u>37.1</u></b>	<b><u>191</u></b>	<b><u>36.8</u></b>	190	36.9	191	36.7
483.xalancbmk	90.8	76.0	91.6	75.3	<b><u>91.5</u></b>	<b><u>75.4</u></b>	<b><u>80.3</u></b>	<b><u>85.9</u></b>	80.2	86.0	80.4	85.8

Results appear in the order in which they were run. Bold underlined text indicates a median measurement.

## Submit Notes

The config file option 'submit' was used.

## Operating System Notes

Stack size set to unlimited using "ulimit -s unlimited"

## Platform Notes

BIOS Configuration:

Hyper-Threading set to Disabled  
Cluster On Die set to Disabled  
Early Snoop set to Enabled  
Performance Profile set to Custom  
C1E Support set to Disabled  
Core C3 set to Disabled  
Core C6 set to Disabled  
Thermal Profile set to High Fan Speed  
Memory Power Savings set to Disabled  
Sysinfo program /home/cpu2006-1.2-ic16.0/config/sysinfo.rev6914  
\$Rev: 6914 \$ \$Date:: 2014-06-25 #\$ e3fbb8667b5a285932ceab81e28219e1  
running on rd650-mlk-rackA01 Tue Jun 14 23:04:18 2016

This section contains SUT (System Under Test) info as seen by some common utilities. To remove or add to this section, see:

<http://www.spec.org/cpu2006/Docs/config.html#sysinfo>

From /proc/cpuinfo

Continued on next page



# SPEC CINT2006 Result

Copyright 2006-2016 Standard Performance Evaluation Corporation

## Lenovo Group Limited

**SPECint2006 = 72.5**

Lenovo ThinkServer RD650  
(2.60 GHz, Intel Xeon E5-2697A v4)

**SPECint\_base2006 = 69.9**

**CPU2006 license:** 9017

**Test date:** Jun-2016

**Test sponsor:** Lenovo Group Limited

**Hardware Availability:** Mar-2016

**Tested by:** Lenovo Group Limited

**Software Availability:** Dec-2015

### Platform Notes (Continued)

```

model name : Intel(R) Xeon(R) CPU E5-2697A v4 @ 2.60GHz
 2 "physical id"s (chips)
 32 "processors"
cores, siblings (Caution: counting these is hw and system dependent. The
following excerpts from /proc/cpuinfo might not be reliable. Use with
caution.)
  cpu cores : 16
  siblings  : 16
  physical 0: cores 0 1 2 3 4 5 6 7 8 9 10 11 12 13 14 15
  physical 1: cores 0 1 2 3 4 5 6 7 8 9 10 11 12 13 14 15
cache size : 40960 KB

```

```

From /proc/meminfo
MemTotal:      264392728 kB
HugePages_Total:    0
Hugepagesize:   2048 kB

```

```

From /etc/*release* /etc/*version*
SuSE-release:
  SUSE Linux Enterprise Server 12 (x86_64)
  VERSION = 12
  PATCHLEVEL = 1
  # This file is deprecated and will be removed in a future service pack or
  # release.
  # Please check /etc/os-release for details about this release.
os-release:
  NAME="SLES"
  VERSION="12-SP1"
  VERSION_ID="12.1"
  PRETTY_NAME="SUSE Linux Enterprise Server 12 SP1"
  ID="sles"
  ANSI_COLOR="0;32"
  CPE_NAME="cpe:/o:suse:sles:12:sp1"

```

```

uname -a:
Linux rd650-mlk-rackA01 3.12.49-11-default #1 SMP Wed Nov 11 20:52:43 UTC
2015 (8d714a0) x86_64 x86_64 x86_64 GNU/Linux

```

run-level 3 Jun 14 22:41

```

SPEC is set to: /home/cpu2006-1.2-ic16.0
Filesystem      Type  Size  Used Avail Use% Mounted on
/dev/sda3       xfs   100G   11G   90G  11% /home

```

Additional information from dmidecode:

Warning: Use caution when you interpret this section. The 'dmidecode' program reads system data which is "intended to allow hardware to be accurately determined", but the intent may not be met, as there are frequent changes to hardware, firmware, and the "DMTF SMBIOS" standard.

BIOS LENOVO PB2TS335 01/09/2016

Memory:

Continued on next page



# SPEC CINT2006 Result

Copyright 2006-2016 Standard Performance Evaluation Corporation

**Lenovo Group Limited**

**SPECint2006 = 72.5**

Lenovo ThinkServer RD650  
(2.60 GHz, Intel Xeon E5-2697A v4)

**SPECint\_base2006 = 69.9**

**CPU2006 license:** 9017

**Test date:** Jun-2016

**Test sponsor:** Lenovo Group Limited

**Hardware Availability:** Mar-2016

**Tested by:** Lenovo Group Limited

**Software Availability:** Dec-2015

## Platform Notes (Continued)

16x Hynix Semiconductor HMA42GR7AFR4N-UH 16 GB 2 rank 2400 MHz  
8x NO DIMM NO DIMM

(End of data from sysinfo program)

## General Notes

Environment variables set by runspec before the start of the run:

KMP\_AFFINITY = "granularity=fine,compact"

LD\_LIBRARY\_PATH = "/home/cpu2006-1.2-ic16.0/libs/32:/home/cpu2006-1.2-ic16.0/libs/64:/home/cpu2006-1.2-ic16.0/sh"

OMP\_NUM\_THREADS = "32"

Binaries compiled on a system with 1x Intel Core i5-4670K CPU + 32GB  
memory using RedHat EL 7.1

Transparent Huge Pages enabled with:

echo always > /sys/kernel/mm/transparent\_hugepage/enabled

## Base Compiler Invocation

C benchmarks:

icc -m64

C++ benchmarks:

icpc -m64

## Base Portability Flags

400.perlbench: -DSPEC\_CPU\_LP64 -DSPEC\_CPU\_LINUX\_X64  
401.bzip2: -DSPEC\_CPU\_LP64  
403.gcc: -DSPEC\_CPU\_LP64  
429.mcf: -DSPEC\_CPU\_LP64  
445.gobmk: -DSPEC\_CPU\_LP64  
456.hmmer: -DSPEC\_CPU\_LP64  
458.sjeng: -DSPEC\_CPU\_LP64  
462.libquantum: -DSPEC\_CPU\_LP64 -DSPEC\_CPU\_LINUX  
464.h264ref: -DSPEC\_CPU\_LP64  
471.omnetpp: -DSPEC\_CPU\_LP64  
473.astar: -DSPEC\_CPU\_LP64  
483.xalancbmk: -DSPEC\_CPU\_LP64 -DSPEC\_CPU\_LINUX

## Base Optimization Flags

C benchmarks:

-xCORE-AVX2 -ipo -O3 -no-prec-div -parallel -opt-prefetch -auto-p32

Continued on next page



# SPEC CINT2006 Result

Copyright 2006-2016 Standard Performance Evaluation Corporation

Lenovo Group Limited

SPECint2006 = 72.5

Lenovo ThinkServer RD650  
(2.60 GHz, Intel Xeon E5-2697A v4)

SPECint\_base2006 = 69.9

CPU2006 license: 9017

Test date: Jun-2016

Test sponsor: Lenovo Group Limited

Hardware Availability: Mar-2016

Tested by: Lenovo Group Limited

Software Availability: Dec-2015

## Base Optimization Flags (Continued)

C++ benchmarks:

-xCORE-AVX2 -ipo -O3 -no-prec-div -opt-prefetch -auto-p32  
-Wl,-z,muldefs -L/sh -lsmartheap64

## Base Other Flags

C benchmarks:

403.gcc: -Dalloca=\_alloca

## Peak Compiler Invocation

C benchmarks (except as noted below):

icc -m64

400.perlbench: icc -m32 -L/opt/intel/compilers\_and\_libraries\_2016/linux/compiler/lib/ia32\_lin

445.gobmk: icc -m32 -L/opt/intel/compilers\_and\_libraries\_2016/linux/compiler/lib/ia32\_lin

C++ benchmarks (except as noted below):

icpc -m32 -L/opt/intel/compilers\_and\_libraries\_2016/linux/compiler/lib/ia32\_lin

473.astar: icpc -m64

## Peak Portability Flags

400.perlbench: -D\_FILE\_OFFSET\_BITS=64 -DSPEC\_CPU\_LINUX\_IA32

401.bzip2: -DSPEC\_CPU\_LP64

403.gcc: -DSPEC\_CPU\_LP64

429.mcf: -DSPEC\_CPU\_LP64

445.gobmk: -D\_FILE\_OFFSET\_BITS=64

456.hmmer: -DSPEC\_CPU\_LP64

458.sjeng: -DSPEC\_CPU\_LP64

462.libquantum: -DSPEC\_CPU\_LP64 -DSPEC\_CPU\_LINUX

464.h264ref: -DSPEC\_CPU\_LP64

471.omnetpp: -D\_FILE\_OFFSET\_BITS=64

473.astar: -DSPEC\_CPU\_LP64

483.xalancbmk: -D\_FILE\_OFFSET\_BITS=64 -DSPEC\_CPU\_LINUX



# SPEC CINT2006 Result

Copyright 2006-2016 Standard Performance Evaluation Corporation

**Lenovo Group Limited**

**SPECint2006 = 72.5**

Lenovo ThinkServer RD650  
(2.60 GHz, Intel Xeon E5-2697A v4)

**SPECint\_base2006 = 69.9**

**CPU2006 license:** 9017

**Test date:** Jun-2016

**Test sponsor:** Lenovo Group Limited

**Hardware Availability:** Mar-2016

**Tested by:** Lenovo Group Limited

**Software Availability:** Dec-2015

## Peak Optimization Flags

C benchmarks:

400.perlbench: -xCORE-AVX2(pass 2) -prof-gen:threadsafe(pass 1)  
-ipo(pass 2) -O3(pass 2) -no-prec-div(pass 2)  
-par-num-threads=1(pass 1) -prof-use(pass 2) -opt-prefetch  
-ansi-alias

401.bzip2: -xCORE-AVX2(pass 2) -prof-gen:threadsafe(pass 1)  
-ipo(pass 2) -O3(pass 2) -no-prec-div  
-par-num-threads=1(pass 1) -prof-use(pass 2) -auto-ilp32  
-opt-prefetch -ansi-alias

403.gcc: -xCORE-AVX2 -ipo -O3 -no-prec-div -inline-calloc  
-opt-malloc-options=3 -auto-ilp32

429.mcf: -xCORE-AVX2 -ipo -O3 -no-prec-div -parallel  
-opt-prefetch -auto-p32

445.gobmk: -xCORE-AVX2(pass 2) -prof-gen:threadsafe(pass 1)  
-prof-use(pass 2) -par-num-threads=1(pass 1) -ansi-alias

456.hmmer: basepeak = yes

458.sjeng: -xCORE-AVX2(pass 2) -prof-gen:threadsafe(pass 1)  
-ipo(pass 2) -O3(pass 2) -no-prec-div(pass 2)  
-par-num-threads=1(pass 1) -prof-use(pass 2) -unroll4

462.libquantum: basepeak = yes

464.h264ref: basepeak = yes

C++ benchmarks:

471.omnetpp: -xCORE-AVX2(pass 2) -prof-gen:threadsafe(pass 1)  
-ipo(pass 2) -O3(pass 2) -no-prec-div(pass 2)  
-par-num-threads=1(pass 1) -prof-use(pass 2)  
-opt-ra-region-strategy=block -ansi-alias  
-Wl,-z,muldefs -L/sh -lsmartheap

473.astar: -xCORE-AVX2 -ipo -O3 -no-prec-div -opt-prefetch  
-auto-p32 -Wl,-z,muldefs -L/sh -lsmartheap64

483.xalancbmk: -xCORE-AVX2 -ipo -O3 -no-prec-div -opt-prefetch  
-ansi-alias -Wl,-z,muldefs -L/sh -lsmartheap



# SPEC CINT2006 Result

Copyright 2006-2016 Standard Performance Evaluation Corporation

**Lenovo Group Limited**

**SPECint2006 = 72.5**

Lenovo ThinkServer RD650  
(2.60 GHz, Intel Xeon E5-2697A v4)

**SPECint\_base2006 = 69.9**

**CPU2006 license:** 9017

**Test date:** Jun-2016

**Test sponsor:** Lenovo Group Limited

**Hardware Availability:** Mar-2016

**Tested by:** Lenovo Group Limited

**Software Availability:** Dec-2015

## Peak Other Flags

C benchmarks:

403.gcc: -Dalloca=\_alloca

The flags files that were used to format this result can be browsed at

<http://www.spec.org/cpu2006/flags/Intel-ic16.0-official-linux64.html>

<http://www.spec.org/cpu2006/flags/Lenovo-Platform-Flags-V1.2-BDW-B.html>

You can also download the XML flags sources by saving the following links:

<http://www.spec.org/cpu2006/flags/Intel-ic16.0-official-linux64.xml>

<http://www.spec.org/cpu2006/flags/Lenovo-Platform-Flags-V1.2-BDW-B.xml>

SPEC and SPECint are registered trademarks of the Standard Performance Evaluation Corporation. All other brand and product names appearing in this result are trademarks or registered trademarks of their respective holders.

For questions about this result, please contact the tester.  
For other inquiries, please contact [webmaster@spec.org](mailto:webmaster@spec.org).

Tested with SPEC CPU2006 v1.2.  
Report generated on Tue Jul 12 11:04:53 2016 by SPEC CPU2006 PS/PDF formatter v6932.  
Originally published on 12 July 2016.