



SPEC® CINT2006 Result

Copyright 2006-2016 Standard Performance Evaluation Corporation

Hewlett Packard Enterprise

(Test Sponsor: HPE)

ProLiant DL360 Gen9
(2.60 GHz, Intel Xeon E5-2697A v4)

SPECint®2006 = 72.5

SPECint_base2006 = 69.6

CPU2006 license: 3

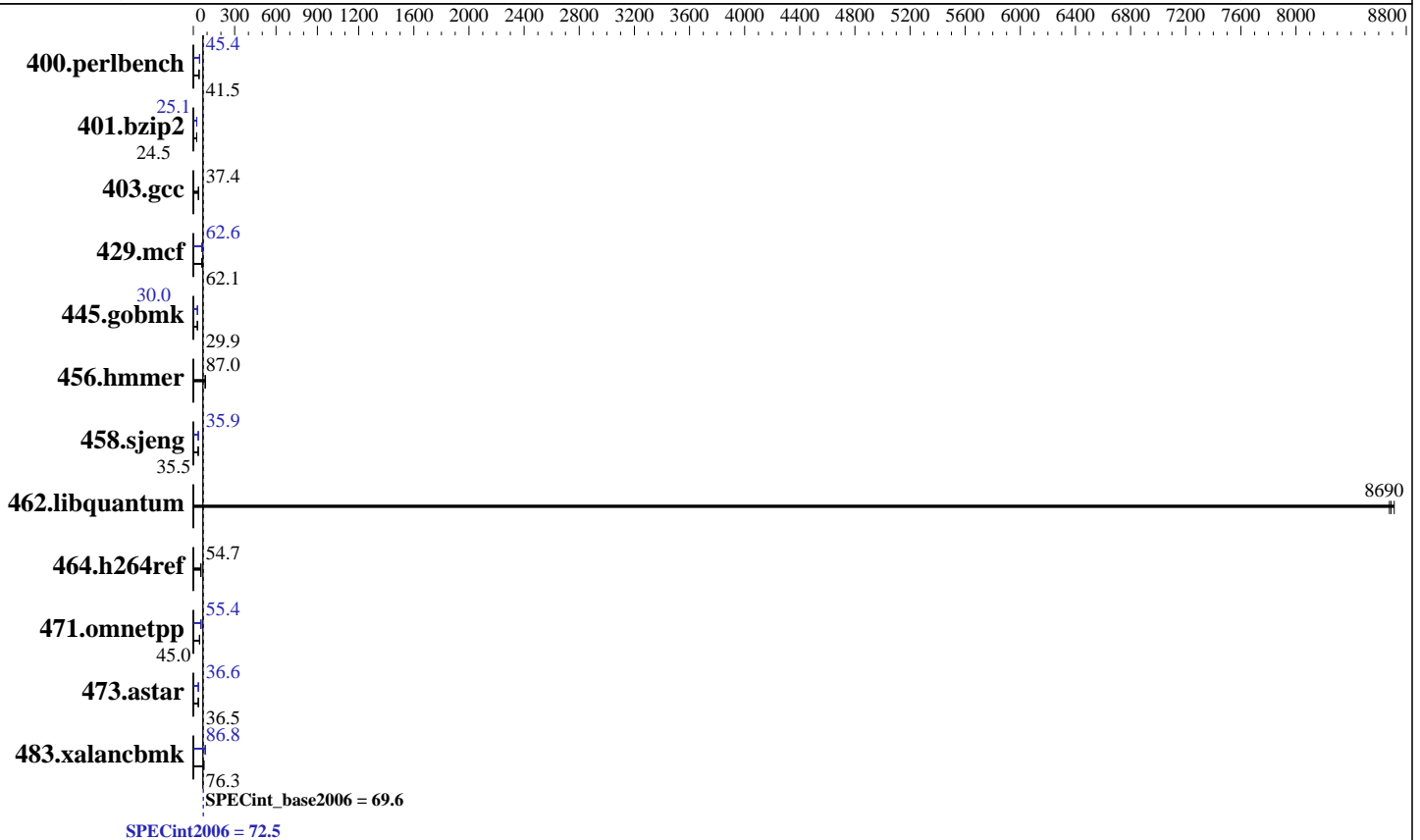
Test sponsor: HPE

Tested by: HPE

Test date: Jun-2016

Hardware Availability: Mar-2016

Software Availability: Nov-2015



Hardware

CPU Name: Intel Xeon E5-2697A v4
 CPU Characteristics: Intel Turbo Boost Technology up to 3.60 GHz
 CPU MHz: 2600
 FPU: Integrated
 CPU(s) enabled: 32 cores, 2 chips, 16 cores/chip, 2 threads/core
 CPU(s) orderable: 1,2 chip
 Primary Cache: 32 KB I + 32 KB D on chip per core
 Secondary Cache: 256 KB I+D on chip per core
 L3 Cache: 40 MB I+D on chip per chip
 Other Cache: None
 Memory: 512 GB (16 x 32 GB 2Rx4 PC4-2400T-R)
 Disk Subsystem: 2 x 400 GB SAS SSD, RAID 1
 Other Hardware: None

Software

Operating System: Red Hat Enterprise Linux Server release 7.2 (Maipo)
 Kernel 3.10.0-327.el7.x86_64
 Compiler: C/C++: Version 16.0.0.101 of Intel C++ Studio XE for Linux
 Auto Parallel: Yes
 File System: xfs
 System State: Run level 3 (multi-user)
 Base Pointers: 32/64-bit
 Peak Pointers: 32/64-bit
 Other Software: Microquill SmartHeap V10.2



SPEC CINT2006 Result

Copyright 2006-2016 Standard Performance Evaluation Corporation

Hewlett Packard Enterprise

(Test Sponsor: HPE)

ProLiant DL360 Gen9

(2.60 GHz, Intel Xeon E5-2697A v4)

SPECint2006 = 72.5

SPECint_base2006 = 69.6

CPU2006 license: 3

Test sponsor: HPE

Tested by: HPE

Test date: Jun-2016

Hardware Availability: Mar-2016

Software Availability: Nov-2015

Results Table

Benchmark	Base						Peak					
	Seconds	Ratio	Seconds	Ratio	Seconds	Ratio	Seconds	Ratio	Seconds	Ratio	Seconds	Ratio
400.perlbench	236	41.4	<u>235</u>	<u>41.5</u>	235	41.5	<u>215</u>	<u>45.4</u>	215	45.4	216	45.3
401.bzip2	394	24.5	<u>394</u>	<u>24.5</u>	392	24.6	384	25.1	384	25.1	<u>384</u>	<u>25.1</u>
403.gcc	215	37.4	215	37.4	<u>215</u>	<u>37.4</u>	215	37.4	215	37.4	<u>215</u>	<u>37.4</u>
429.mcf	<u>147</u>	<u>62.1</u>	148	61.6	147	62.2	145	62.9	147	62.2	<u>146</u>	<u>62.6</u>
445.gobmk	351	29.9	351	29.9	<u>351</u>	<u>29.9</u>	<u>350</u>	<u>30.0</u>	351	29.9	350	30.0
456.hammer	108	86.7	107	87.0	<u>107</u>	<u>87.0</u>	108	86.7	107	87.0	<u>107</u>	<u>87.0</u>
458.sjeng	341	35.5	<u>341</u>	<u>35.5</u>	340	35.5	<u>337</u>	<u>35.9</u>	337	35.9	336	36.0
462.libquantum	2.38	8710	<u>2.38</u>	<u>8690</u>	2.39	8680	2.38	8710	<u>2.38</u>	<u>8690</u>	2.39	8680
464.h264ref	406	54.5	404	54.8	<u>404</u>	<u>54.7</u>	406	54.5	404	54.8	<u>404</u>	<u>54.7</u>
471.omnetpp	136	45.9	139	45.0	<u>139</u>	<u>45.0</u>	<u>113</u>	<u>55.4</u>	112	55.7	113	55.1
473.astar	193	36.4	192	36.5	<u>192</u>	<u>36.5</u>	192	36.7	193	36.4	<u>192</u>	<u>36.6</u>
483.xalancbmk	90.6	76.2	<u>90.5</u>	<u>76.3</u>	90.4	76.3	79.6	86.7	<u>79.5</u>	<u>86.8</u>	79.4	86.8

Results appear in the order in which they were run. Bold underlined text indicates a median measurement.

Submit Notes

The config file option 'submit' was used.

Operating System Notes

Stack size set to unlimited using "ulimit -s unlimited"
Transparent Huge Pages enabled with:
echo always > /sys/kernel/mm/transparent_hugepage/enabled

Platform Notes

BIOS Configuration:

HP Power Profile set to Custom
HP Power Regulator to HP Static High Performance Mode
Minimum Processor Idle Power Core C-State set to C1E State
Minimum Processor Idle Power Package C-State set to No Package State
QPI Snoop Configuration set to Home Snoop
Collaborative Power Control set to Disabled
Thermal Configuration set to Maximum Cooling
Processor Power and Utilization Monitoring set to Disabled
Memory Refresh Rate set to 1x Refresh
Intel Hyperthreading set to Enabled

Sysinfo program /cpu2006/config/sysinfo.rev6914
\$Rev: 6914 \$ \$Date:: 2014-06-25 #\$ e3fbb8667b5a285932ceab81e28219e1
running on localhost.localdomain Thu Jun 9 17:49:56 2016

This section contains SUT (System Under Test) info as seen by some common utilities. To remove or add to this section, see:

Continued on next page



SPEC CINT2006 Result

Copyright 2006-2016 Standard Performance Evaluation Corporation

Hewlett Packard Enterprise

(Test Sponsor: HPE)

ProLiant DL360 Gen9
(2.60 GHz, Intel Xeon E5-2697A v4)

SPECint2006 = 72.5

SPECint_base2006 = 69.6

CPU2006 license: 3

Test sponsor: HPE

Tested by: HPE

Test date: Jun-2016

Hardware Availability: Mar-2016

Software Availability: Nov-2015

Platform Notes (Continued)

<http://www.spec.org/cpu2006/Docs/config.html#sysinfo>

From /proc/cpuinfo

model name : Intel(R) Xeon(R) CPU E5-2697A v4 @ 2.60GHz

2 "physical id"s (chips)

64 "processors"

cores, siblings (Caution: counting these is hw and system dependent. The following excerpts from /proc/cpuinfo might not be reliable. Use with caution.)

cpu cores : 16

siblings : 32

physical 0: cores 0 1 2 3 4 5 6 7 8 9 10 11 12 13 14 15

physical 1: cores 0 1 2 3 4 5 6 7 8 9 10 11 12 13 14 15

cache size : 40960 KB

From /proc/meminfo

MemTotal: 528062744 kB

HugePages_Total: 0

Hugepagesize: 2048 kB

From /etc/*release* /etc/*version*

os-release:

NAME="Red Hat Enterprise Linux Server"

VERSION="7.2 (Maipo)"

ID="rhel"

ID_LIKE="fedora"

VERSION_ID="7.2"

PRETTY_NAME="Red Hat Enterprise Linux Server 7.2 (Maipo)"

ANSI_COLOR="0;31"

CPE_NAME="cpe:/o:redhat:enterprise_linux:7.2:GA:server"

redhat-release: Red Hat Enterprise Linux Server release 7.2 (Maipo)

system-release: Red Hat Enterprise Linux Server release 7.2 (Maipo)

system-release-cpe: cpe:/o:redhat:enterprise_linux:7.2:ga:server

uname -a:

Linux localhost.localdomain 3.10.0-327.el7.x86_64 #1 SMP Thu Oct 29 17:29:29

EDT 2015 x86_64 x86_64 x86_64 GNU/Linux

run-level 3 Jun 9 17:49

SPEC is set to: /cpu2006

Filesystem Type Size Used Avail Use% Mounted on

/dev/sda4 xfs 368G 9.8G 358G 3% /

Additional information from dmidecode:

Warning: Use caution when you interpret this section. The 'dmidecode' program reads system data which is "intended to allow hardware to be accurately determined", but the intent may not be met, as there are frequent changes to hardware, firmware, and the "DMTF SMBIOS" standard.

BIOS HP P89 02/22/2016

Memory:

Continued on next page



SPEC CINT2006 Result

Copyright 2006-2016 Standard Performance Evaluation Corporation

Hewlett Packard Enterprise

(Test Sponsor: HPE)

ProLiant DL360 Gen9
(2.60 GHz, Intel Xeon E5-2697A v4)

SPECint2006 = 72.5

SPECint_base2006 = 69.6

CPU2006 license: 3

Test sponsor: HPE

Tested by: HPE

Test date: Jun-2016

Hardware Availability: Mar-2016

Software Availability: Nov-2015

Platform Notes (Continued)

8x UNKNOWN NOT AVAILABLE

16x UNKNOWN NOT AVAILABLE 32 GB 2 rank 2400 MHz

(End of data from sysinfo program)

Regarding the sysinfo display about the memory installed, the correct amount of memory is 512 GB and the dmidecode description should have one line reading as:

16x UNKNOWN NOT AVAILABLE 32 GB 2 rank 2400 MHz

General Notes

Environment variables set by runspec before the start of the run:

KMP_AFFINITY = "granularity=fine,scatter"

LD_LIBRARY_PATH = "/cpu2006/libs/32:/cpu2006/libs/64:/cpu2006/sh"

OMP_NUM_THREADS = "32"

Binaries compiled on a system with 1x Intel Core i5-4670K CPU + 32GB memory using RedHat EL 7.1

Base Compiler Invocation

C benchmarks:

icc -m64

C++ benchmarks:

icpc -m64

Base Portability Flags

400.perlbench: -DSPEC_CPU_LP64 -DSPEC_CPU_LINUX_X64

401.bzip2: -DSPEC_CPU_LP64

403.gcc: -DSPEC_CPU_LP64

429.mcf: -DSPEC_CPU_LP64

445.gobmk: -DSPEC_CPU_LP64

456.hmmmer: -DSPEC_CPU_LP64

458.sjeng: -DSPEC_CPU_LP64

462.libquantum: -DSPEC_CPU_LP64 -DSPEC_CPU_LINUX

464.h264ref: -DSPEC_CPU_LP64

471.omnetpp: -DSPEC_CPU_LP64

473.astar: -DSPEC_CPU_LP64

483.xalancbmk: -DSPEC_CPU_LP64 -DSPEC_CPU_LINUX

Base Optimization Flags

C benchmarks:

-xCORE-AVX2 -ipo -O3 -no-prec-div -parallel -opt-prefetch -auto-p32

Continued on next page

Standard Performance Evaluation Corporation

info@spec.org

http://www.spec.org/



SPEC CINT2006 Result

Copyright 2006-2016 Standard Performance Evaluation Corporation

Hewlett Packard Enterprise

(Test Sponsor: HPE)

ProLiant DL360 Gen9
(2.60 GHz, Intel Xeon E5-2697A v4)

SPECint2006 = 72.5

SPECint_base2006 = 69.6

CPU2006 license: 3

Test sponsor: HPE

Tested by: HPE

Test date: Jun-2016

Hardware Availability: Mar-2016

Software Availability: Nov-2015

Base Optimization Flags (Continued)

C++ benchmarks:

-xCORE-AVX2 -ipo -O3 -no-prec-div -opt-prefetch -auto-p32
-Wl,-z,muldefs -L/sh -lsmartheap64

Base Other Flags

C benchmarks:

403.gcc: -Dalloca=_alloca

Peak Compiler Invocation

C benchmarks (except as noted below):

icc -m64

400.perlbench: icc -m32 -L/opt/intel/compilers_and_libraries_2016/linux/compiler/lib/ia32_lin

445.gobmk: icc -m32 -L/opt/intel/compilers_and_libraries_2016/linux/compiler/lib/ia32_lin

C++ benchmarks (except as noted below):

icpc -m32 -L/opt/intel/compilers_and_libraries_2016/linux/compiler/lib/ia32_lin

473.astar: icpc -m64

Peak Portability Flags

400.perlbench: -D_FILE_OFFSET_BITS=64 -DSPEC_CPU_LINUX_IA32

401.bzip2: -DSPEC_CPU_LP64

403.gcc: -DSPEC_CPU_LP64

429.mcf: -DSPEC_CPU_LP64

445.gobmk: -D_FILE_OFFSET_BITS=64

456.hmmer: -DSPEC_CPU_LP64

458.sjeng: -DSPEC_CPU_LP64

462.libquantum: -DSPEC_CPU_LP64 -DSPEC_CPU_LINUX

464.h264ref: -DSPEC_CPU_LP64

471.omnetpp: -D_FILE_OFFSET_BITS=64

473.astar: -DSPEC_CPU_LP64

483.xalancbmk: -D_FILE_OFFSET_BITS=64 -DSPEC_CPU_LINUX



SPEC CINT2006 Result

Copyright 2006-2016 Standard Performance Evaluation Corporation

Hewlett Packard Enterprise

(Test Sponsor: HPE)

ProLiant DL360 Gen9

(2.60 GHz, Intel Xeon E5-2697A v4)

SPECint2006 =

72.5

SPECint_base2006 =

69.6

CPU2006 license: 3

Test sponsor: HPE

Tested by: HPE

Test date: Jun-2016

Hardware Availability: Mar-2016

Software Availability: Nov-2015

Peak Optimization Flags

C benchmarks:

400.perlbench: -xCORE-AVX2(pass 2) -prof-gen:threadsafe(pass 1)
-ipo(pass 2) -O3(pass 2) -no-prec-div(pass 2)
-par-num-threads=1(pass 1) -prof-use(pass 2) -opt-prefetch
-ansi-alias

401.bzip2: -xCORE-AVX2(pass 2) -prof-gen:threadsafe(pass 1)
-ipo(pass 2) -O3(pass 2) -no-prec-div
-par-num-threads=1(pass 1) -prof-use(pass 2) -auto-ilp32
-opt-prefetch -ansi-alias

403.gcc: basepeak = yes

429.mcf: -xCORE-AVX2 -ipo -O3 -no-prec-div -parallel
-opt-prefetch -auto-p32

445.gobmk: -xCORE-AVX2(pass 2) -prof-gen:threadsafe(pass 1)
-prof-use(pass 2) -par-num-threads=1(pass 1) -ansi-alias

456.hmmmer: basepeak = yes

458.sjeng: -xCORE-AVX2(pass 2) -prof-gen:threadsafe(pass 1)
-ipo(pass 2) -O3(pass 2) -no-prec-div(pass 2)
-par-num-threads=1(pass 1) -prof-use(pass 2) -unroll4

462.libquantum: basepeak = yes

464.h264ref: basepeak = yes

C++ benchmarks:

471.omnetpp: -xCORE-AVX2(pass 2) -prof-gen:threadsafe(pass 1)
-ipo(pass 2) -O3(pass 2) -no-prec-div(pass 2)
-par-num-threads=1(pass 1) -prof-use(pass 2)
-opt-ra-region-strategy=block -ansi-alias
-Wl,-z,muldefs -L/sh -lsmartheap

473.astar: -xCORE-AVX2 -ipo -O3 -no-prec-div -opt-prefetch
-auto-p32 -Wl,-z,muldefs -L/sh -lsmartheap64

483.xalancbmk: -xCORE-AVX2 -ipo -O3 -no-prec-div -opt-prefetch
-ansi-alias -Wl,-z,muldefs -L/sh -lsmartheap

Peak Other Flags

C benchmarks:

Continued on next page



SPEC CINT2006 Result

Copyright 2006-2016 Standard Performance Evaluation Corporation

Hewlett Packard Enterprise

(Test Sponsor: HPE)

ProLiant DL360 Gen9

(2.60 GHz, Intel Xeon E5-2697A v4)

SPECint2006 =

72.5

SPECint_base2006 =

69.6

CPU2006 license: 3

Test sponsor: HPE

Tested by: HPE

Test date: Jun-2016

Hardware Availability: Mar-2016

Software Availability: Nov-2015

Peak Other Flags (Continued)

403.gcc: -Dalloca=_alloca

The flags files that were used to format this result can be browsed at

<http://www.spec.org/cpu2006/flags/HP-Platform-Flags-Intel-V1.2-HSW-revE.html>

<http://www.spec.org/cpu2006/flags/Intel-ic16.0-official-linux64.html>

You can also download the XML flags sources by saving the following links:

<http://www.spec.org/cpu2006/flags/HP-Platform-Flags-Intel-V1.2-HSW-revE.xml>

<http://www.spec.org/cpu2006/flags/Intel-ic16.0-official-linux64.xml>

SPEC and SPECint are registered trademarks of the Standard Performance Evaluation Corporation. All other brand and product names appearing in this result are trademarks or registered trademarks of their respective holders.

For questions about this result, please contact the tester.
For other inquiries, please contact webmaster@spec.org.

Tested with SPEC CPU2006 v1.2.

Report generated on Tue Jul 12 11:03:33 2016 by SPEC CPU2006 PS/PDF formatter v6932.

Originally published on 12 July 2016.

Standard Performance Evaluation Corporation

info@spec.org

<http://www.spec.org/>

Page 7