



SPEC[®] CFP2006 Result

Copyright 2006-2016 Standard Performance Evaluation Corporation

Hewlett Packard Enterprise

(Test Sponsor: HPE)

ProLiant DL380 Gen9

(1.70 GHz, Intel Xeon E5-2609 v4)

SPECfp[®]2006 = 70.9

SPECfp_base2006 = 69.3

CPU2006 license: 3

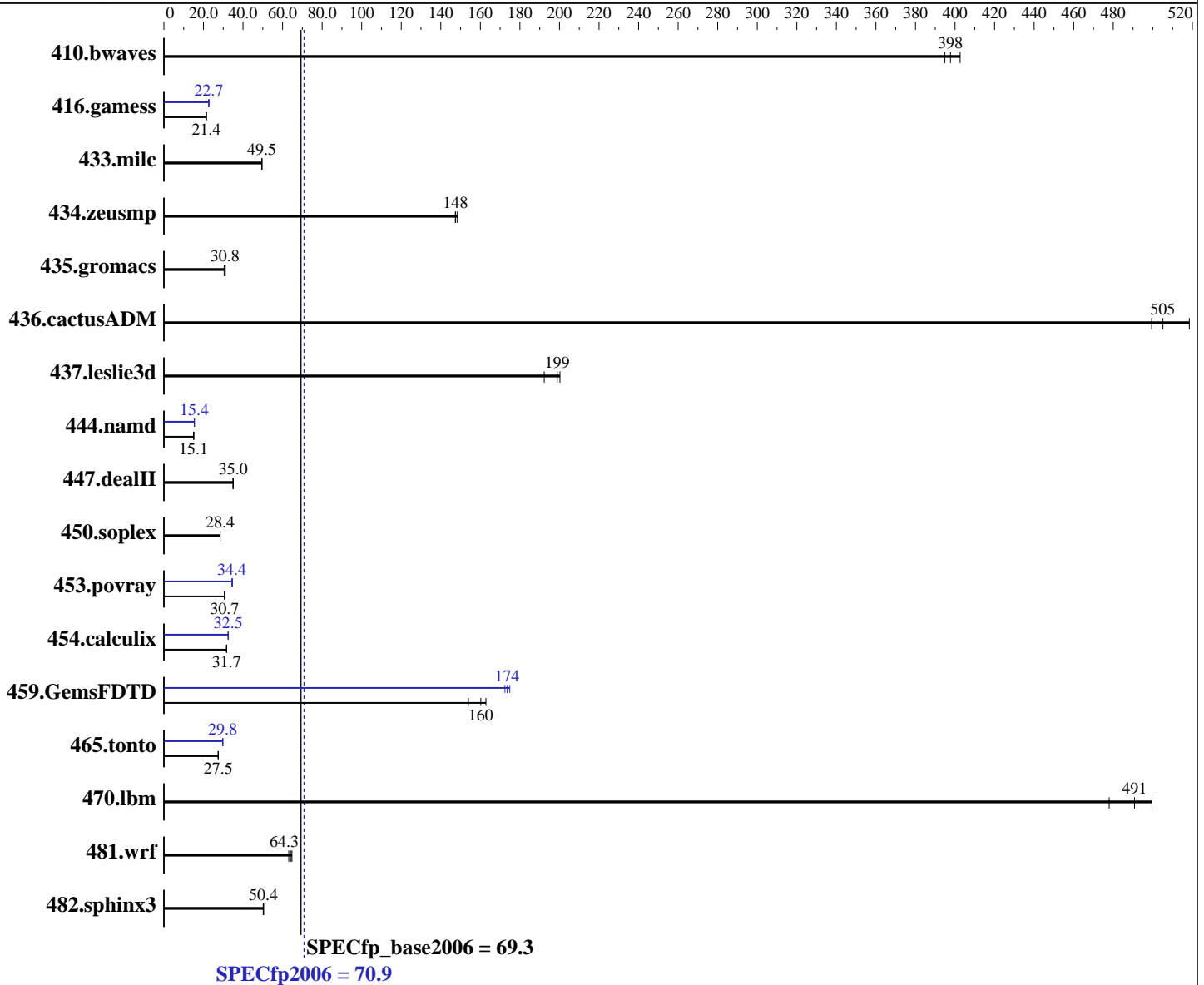
Test sponsor: HPE

Tested by: HPE

Test date: Mar-2016

Hardware Availability: Mar-2016

Software Availability: Nov-2015



Hardware

CPU Name: Intel Xeon E5-2609 v4
 CPU Characteristics:
 CPU MHz: 1700
 FPU: Integrated
 CPU(s) enabled: 16 cores, 2 chips, 8 cores/chip
 CPU(s) orderable: 1,2 chip
 Primary Cache: 32 KB I + 32 KB D on chip per core
 Secondary Cache: 256 KB I+D on chip per core

Continued on next page

Software

Operating System: Red Hat Enterprise Linux Server release 7.2, (Maipo)
 Kernel 3.10.0-327.el7.x86_64
 Compiler: C/C++: Version 16.0.0.101 of Intel C++ Studio XE for Linux;
 Fortran: Version 16.0.0.101 of Intel Fortran Studio XE for Linux
 Auto Parallel: Yes
 File System: xfs

Continued on next page



SPEC CFP2006 Result

Copyright 2006-2016 Standard Performance Evaluation Corporation

Hewlett Packard Enterprise

(Test Sponsor: HPE)

ProLiant DL380 Gen9

(1.70 GHz, Intel Xeon E5-2609 v4)

SPECfp2006 = 70.9

SPECfp_base2006 = 69.3

CPU2006 license: 3

Test sponsor: HPE

Tested by: HPE

Test date: Mar-2016

Hardware Availability: Mar-2016

Software Availability: Nov-2015

L3 Cache: 20 MB I+D on chip per chip
Other Cache: None
Memory: 512 GB (16 x 32 GB 2Rx4 PC4-2400T-R, running at 1866 MHz)
Disk Subsystem: 1 x 400 GB SAS SSD, RAID 0
Other Hardware: None

System State: Run level 3 (multi-user)
Base Pointers: 64-bit
Peak Pointers: 32/64-bit
Other Software: None

Results Table

Benchmark	Base						Peak					
	Seconds	Ratio	Seconds	Ratio	Seconds	Ratio	Seconds	Ratio	Seconds	Ratio	Seconds	Ratio
410.bwaves	33.8	403	<u>34.2</u>	<u>398</u>	34.4	395	33.8	403	<u>34.2</u>	<u>398</u>	34.4	395
416.gamess	<u>914</u>	<u>21.4</u>	914	21.4	914	21.4	862	22.7	862	22.7	<u>862</u>	<u>22.7</u>
433.milc	186	49.4	185	49.7	<u>185</u>	<u>49.5</u>	186	49.4	185	49.7	<u>185</u>	<u>49.5</u>
434.zeusmp	61.3	148	61.8	147	<u>61.7</u>	<u>148</u>	61.3	148	61.8	147	<u>61.7</u>	<u>148</u>
435.gromacs	230	31.0	<u>232</u>	<u>30.8</u>	234	30.4	230	31.0	<u>232</u>	<u>30.8</u>	234	30.4
436.cactusADM	<u>23.7</u>	<u>505</u>	23.9	499	23.0	518	<u>23.7</u>	<u>505</u>	23.9	499	23.0	518
437.leslie3d	48.9	192	46.9	200	<u>47.3</u>	<u>199</u>	48.9	192	46.9	200	<u>47.3</u>	<u>199</u>
444.namd	532	15.1	<u>532</u>	<u>15.1</u>	532	15.1	520	15.4	<u>521</u>	<u>15.4</u>	521	15.4
447.dealII	326	35.1	328	34.9	<u>326</u>	<u>35.0</u>	326	35.1	328	34.9	<u>326</u>	<u>35.0</u>
450.soplex	294	28.4	<u>293</u>	<u>28.4</u>	293	28.4	294	28.4	<u>293</u>	<u>28.4</u>	293	28.4
453.povray	173	30.8	<u>173</u>	<u>30.7</u>	174	30.5	153	34.7	155	34.4	<u>155</u>	<u>34.4</u>
454.calculix	260	31.7	<u>260</u>	<u>31.7</u>	260	31.7	<u>254</u>	<u>32.5</u>	254	32.5	254	32.5
459.GemsFDTD	65.2	163	<u>66.2</u>	<u>160</u>	68.9	154	<u>61.1</u>	<u>174</u>	60.7	175	61.5	172
465.tonto	358	27.5	358	27.5	<u>358</u>	<u>27.5</u>	330	29.8	331	29.7	<u>331</u>	<u>29.8</u>
470.lbm	<u>28.0</u>	<u>491</u>	27.5	500	28.7	478	<u>28.0</u>	<u>491</u>	27.5	500	28.7	478
481.wrf	177	63.1	<u>174</u>	<u>64.3</u>	173	64.7	177	63.1	<u>174</u>	<u>64.3</u>	173	64.7
482.sphinx3	388	50.2	387	50.4	<u>387</u>	<u>50.4</u>	388	50.2	387	50.4	<u>387</u>	<u>50.4</u>

Results appear in the order in which they were run. Bold underlined text indicates a median measurement.

Operating System Notes

Stack size set to unlimited using "ulimit -s unlimited"

Transparent Huge Pages enabled with:

```
echo always > /sys/kernel/mm/transparent_hugepage/enabled
```

Platform Notes

BIOS Configuration:

HP Power Profile set to Custom

HP Power Regulator to HP Static High Performance Mode

Minimum Processor Idle Power Core C-State set to C1E State

Minimum Processor Idle Power Package C-State set to No Package State

QPI Snoop Configuration set to Home Snoop

Collaborative Power Control set to Disabled

Continued on next page

Standard Performance Evaluation Corporation

info@spec.org

http://www.spec.org/

Page 2



SPEC CFP2006 Result

Copyright 2006-2016 Standard Performance Evaluation Corporation

Hewlett Packard Enterprise

(Test Sponsor: HPE)

ProLiant DL380 Gen9

(1.70 GHz, Intel Xeon E5-2609 v4)

SPECfp2006 =

70.9

SPECfp_base2006 =

69.3

CPU2006 license: 3

Test sponsor: HPE

Tested by: HPE

Test date: Mar-2016

Hardware Availability: Mar-2016

Software Availability: Nov-2015

Platform Notes (Continued)

Thermal Configuration set to Maximum Cooling
Processor Power and Utilization Monitoring set to Disabled
Memory Refresh Rate set to 1x Refresh

Sysinfo program /home/cpu2006/config/sysinfo.rev6914
\$Rev: 6914 \$ \$Date:: 2014-06-25 # \$ e3fbb8667b5a285932ceab81e28219e1
running on DL380Gen9allbin Thu Mar 24 02:05:29 2016

This section contains SUT (System Under Test) info as seen by
some common utilities. To remove or add to this section, see:
<http://www.spec.org/cpu2006/Docs/config.html#sysinfo>

From /proc/cpuinfo

```
model name      : Intel(R) Xeon(R) CPU E5-2609 v4 @ 1.70GHz
 2 "physical id"s (chips)
 16 "processors"
cores, siblings (Caution: counting these is hw and system dependent. The
following excerpts from /proc/cpuinfo might not be reliable. Use with
caution.)
  cpu cores     : 8
  siblings      : 8
  physical 0:   : cores 0 1 2 3 4 5 6 7
  physical 1:   : cores 0 1 2 3 4 5 6 7
cache size     : 20480 KB
```

From /proc/meminfo

```
MemTotal:      528068704 kB
HugePages_Total: 0
Hugepagesize:   2048 kB
```

From /etc/*release* /etc/*version*

```
os-release:
NAME="Red Hat Enterprise Linux Server"
VERSION="7.2 (Maipo)"
ID="rhel"
ID_LIKE="fedora"
VERSION_ID="7.2"
PRETTY_NAME="Red Hat Enterprise Linux Server 7.2 (Maipo)"
ANSI_COLOR="0;31"
CPE_NAME="cpe:/o:redhat:enterprise_linux:7.2:GA:server"
redhat-release: Red Hat Enterprise Linux Server release 7.2 (Maipo)
system-release: Red Hat Enterprise Linux Server release 7.2 (Maipo)
system-release-cpe: cpe:/o:redhat:enterprise_linux:7.2:ga:server
```

uname -a:

```
Linux DL380Gen9allbin 3.10.0-327.el7.x86_64 #1 SMP Thu Oct 29 17:29:29 EDT
2015 x86_64 x86_64 x86_64 GNU/Linux
```

run-level 3 Mar 23 06:36

SPEC is set to: /home/cpu2006

```
Filesystem      Type  Size  Used Avail Use% Mounted on
Continued on next page
```



SPEC CFP2006 Result

Copyright 2006-2016 Standard Performance Evaluation Corporation

Hewlett Packard Enterprise

(Test Sponsor: HPE)

ProLiant DL380 Gen9

(1.70 GHz, Intel Xeon E5-2609 v4)

SPECfp2006 =

70.9

SPECfp_base2006 =

69.3

CPU2006 license: 3

Test sponsor: HPE

Tested by: HPE

Test date: Mar-2016

Hardware Availability: Mar-2016

Software Availability: Nov-2015

Platform Notes (Continued)

/dev/sda5 xfs 318G 78G 241G 25% /home
Additional information from dmidecode:

Warning: Use caution when you interpret this section. The 'dmidecode' program reads system data which is "intended to allow hardware to be accurately determined", but the intent may not be met, as there are frequent changes to hardware, firmware, and the "DMTF SMBIOS" standard.

BIOS HP P89 02/22/2016

Memory:

8x UNKNOWN NOT AVAILABLE

16x UNKNOWN NOT AVAILABLE 32 GB 2 rank 2400 MHz, configured at 1866 MHz

(End of data from sysinfo program)

Regarding the sysinfo display about the memory installed, the correct amount of memory is 512 GB and the dmidecode description should have one line reading as:
16x UNKNOWN NOT AVAILABLE 32 GB 2 rank 2400 MHz, configured at 1866 MHz

General Notes

Environment variables set by runspec before the start of the run:

KMP_AFFINITY = "granularity=fine,compact,1,0"

OMP_NUM_THREADS = "16"

LD_LIBRARY_PATH = "/home/cpu2006/libs/32:/home/cpu2006/libs/64:/home/cpu2006/sh"

Binaries compiled on a system with 1x Intel Xeon E5-2660 v4 CPU + 128GB memory using RedHat EL 7.2

Base Compiler Invocation

C benchmarks:

icc -m64

C++ benchmarks:

icpc -m64

Fortran benchmarks:

ifort -m64

Benchmarks using both Fortran and C:

icc -m64 ifort -m64

Base Portability Flags

410.bwaves: -DSPEC_CPU_LP64

416.gamess: -DSPEC_CPU_LP64

Continued on next page

Standard Performance Evaluation Corporation

info@spec.org

http://www.spec.org/

Page 4



SPEC CFP2006 Result

Copyright 2006-2016 Standard Performance Evaluation Corporation

Hewlett Packard Enterprise

(Test Sponsor: HPE)

ProLiant DL380 Gen9

(1.70 GHz, Intel Xeon E5-2609 v4)

SPECfp2006 =

70.9

SPECfp_base2006 =

69.3

CPU2006 license: 3

Test sponsor: HPE

Tested by: HPE

Test date: Mar-2016

Hardware Availability: Mar-2016

Software Availability: Nov-2015

Base Portability Flags (Continued)

```

433.milc: -DSPEC_CPU_LP64
434.zeusmp: -DSPEC_CPU_LP64
435.gromacs: -DSPEC_CPU_LP64 -nofor_main
436.cactusADM: -DSPEC_CPU_LP64 -nofor_main
437.leslie3d: -DSPEC_CPU_LP64
444.namd: -DSPEC_CPU_LP64
447.dealII: -DSPEC_CPU_LP64
450.soplex: -DSPEC_CPU_LP64
453.povray: -DSPEC_CPU_LP64
454.calculix: -DSPEC_CPU_LP64 -nofor_main
459.GemsFDTD: -DSPEC_CPU_LP64
465.tonto: -DSPEC_CPU_LP64
470.lbm: -DSPEC_CPU_LP64
481.wrf: -DSPEC_CPU_LP64 -DSPEC_CPU_CASE_FLAG -DSPEC_CPU_LINUX
482.sphinx3: -DSPEC_CPU_LP64

```

Base Optimization Flags

C benchmarks:

```

-xCORE-AVX2 -ipo -O3 -no-prec-div -static -parallel -opt-prefetch
-ansi-alias -fp-model fast=2
-qopt-prefetch-issue-excl-hint

```

C++ benchmarks:

```

-xCORE-AVX2 -ipo -O3 -no-prec-div -static -opt-prefetch -ansi-alias
-fp-model fast=2
-qopt-prefetch-issue-excl-hint

```

Fortran benchmarks:

```

-xCORE-AVX2 -ipo -O3 -no-prec-div -static -parallel -opt-prefetch
-fp-model fast=2
-qopt-prefetch-issue-excl-hint

```

Benchmarks using both Fortran and C:

```

-xCORE-AVX2 -ipo -O3 -no-prec-div -static -parallel -opt-prefetch
-ansi-alias -fp-model fast=2
-qopt-prefetch-issue-excl-hint

```

Peak Compiler Invocation

C benchmarks:

```
icc -m64
```

C++ benchmarks:

```
icpc -m64
```

Continued on next page

Standard Performance Evaluation Corporation

info@spec.org

http://www.spec.org/

Page 5



SPEC CFP2006 Result

Copyright 2006-2016 Standard Performance Evaluation Corporation

Hewlett Packard Enterprise

(Test Sponsor: HPE)

ProLiant DL380 Gen9

(1.70 GHz, Intel Xeon E5-2609 v4)

SPECfp2006 =

70.9

SPECfp_base2006 =

69.3

CPU2006 license: 3

Test sponsor: HPE

Tested by: HPE

Test date: Mar-2016

Hardware Availability: Mar-2016

Software Availability: Nov-2015

Peak Compiler Invocation (Continued)

Fortran benchmarks:

ifort -m64

Benchmarks using both Fortran and C:

icc -m64 ifort -m64

Peak Portability Flags

Same as Base Portability Flags

Peak Optimization Flags

C benchmarks:

433.milc: basepeak = yes

470.lbm: basepeak = yes

482.sphinx3: basepeak = yes

C++ benchmarks:

444.namd: -xCORE-AVX2(pass 2) -prof-gen:threadsafe(pass 1)
-ipo(pass 2) -O3(pass 2) -no-prec-div(pass 2)
-par-num-threads=1(pass 1) -prof-use(pass 2) -fno-alias
-auto-ilp32

447.dealIII: basepeak = yes

450.soplex: basepeak = yes

453.povray: -xCORE-AVX2(pass 2) -prof-gen:threadsafe(pass 1)
-ipo(pass 2) -O3(pass 2) -no-prec-div(pass 2)
-par-num-threads=1(pass 1) -prof-use(pass 2) -unroll4
-ansi-alias

Fortran benchmarks:

410.bwaves: basepeak = yes

416.gamess: -xCORE-AVX2(pass 2) -prof-gen:threadsafe(pass 1)
-ipo(pass 2) -O3(pass 2) -no-prec-div(pass 2)
-par-num-threads=1(pass 1) -prof-use(pass 2) -unroll2
-inline-level=0 -scalar-rep-

Continued on next page



SPEC CFP2006 Result

Copyright 2006-2016 Standard Performance Evaluation Corporation

Hewlett Packard Enterprise

(Test Sponsor: HPE)

ProLiant DL380 Gen9

(1.70 GHz, Intel Xeon E5-2609 v4)

SPECfp2006 = 70.9

SPECfp_base2006 = 69.3

CPU2006 license: 3

Test sponsor: HPE

Tested by: HPE

Test date: Mar-2016

Hardware Availability: Mar-2016

Software Availability: Nov-2015

Peak Optimization Flags (Continued)

434.zeusmp: basepeak = yes

437.leslie3d: basepeak = yes

459.GemsFDTD: -xCORE-AVX2(pass 2) -prof-gen:threadsafe(pass 1)
-ipo(pass 2) -O3(pass 2) -no-prec-div(pass 2)
-par-num-threads=1(pass 1) -prof-use(pass 2) -unroll2
-inline-level=0 -opt-prefetch -parallel

465.tonto: -xCORE-AVX2(pass 2) -prof-gen:threadsafe(pass 1)
-ipo(pass 2) -O3(pass 2) -no-prec-div(pass 2)
-par-num-threads=1(pass 1) -prof-use(pass 2) -inline-calloc
-opt-malloc-options=3 -auto -unroll4

Benchmarks using both Fortran and C:

435.gromacs: basepeak = yes

436.cactusADM: basepeak = yes

454.calculix: -xCORE-AVX2 -ipo -O3 -no-prec-div -auto-ilp32 -ansi-alias

481.wrf: basepeak = yes

The flags files that were used to format this result can be browsed at

<http://www.spec.org/cpu2006/flags/HP-Compiler-Flags-Intel-V1.2-BDW-revE.html>

<http://www.spec.org/cpu2006/flags/HP-Platform-Flags-AMD-V1.2-revC.html>

You can also download the XML flags sources by saving the following links:

<http://www.spec.org/cpu2006/flags/HP-Compiler-Flags-Intel-V1.2-BDW-revE.xml>

<http://www.spec.org/cpu2006/flags/HP-Platform-Flags-AMD-V1.2-revC.xml>

SPEC and SPECfp are registered trademarks of the Standard Performance Evaluation Corporation. All other brand and product names appearing in this result are trademarks or registered trademarks of their respective holders.

For questions about this result, please contact the tester.
For other inquiries, please contact webmaster@spec.org.

Tested with SPEC CPU2006 v1.2.

Report generated on Tue May 3 18:01:01 2016 by SPEC CPU2006 PS/PDF formatter v6932.

Originally published on 3 May 2016.