



SPEC[®] CFP2006 Result

Copyright 2006-2016 Standard Performance Evaluation Corporation

Dell Inc.

SPECfp[®]2006 = 119

PowerEdge R730 (Intel Xeon E5-2689 v4, 3.10 GHz)

SPECfp_base2006 = 114

CPU2006 license: 55

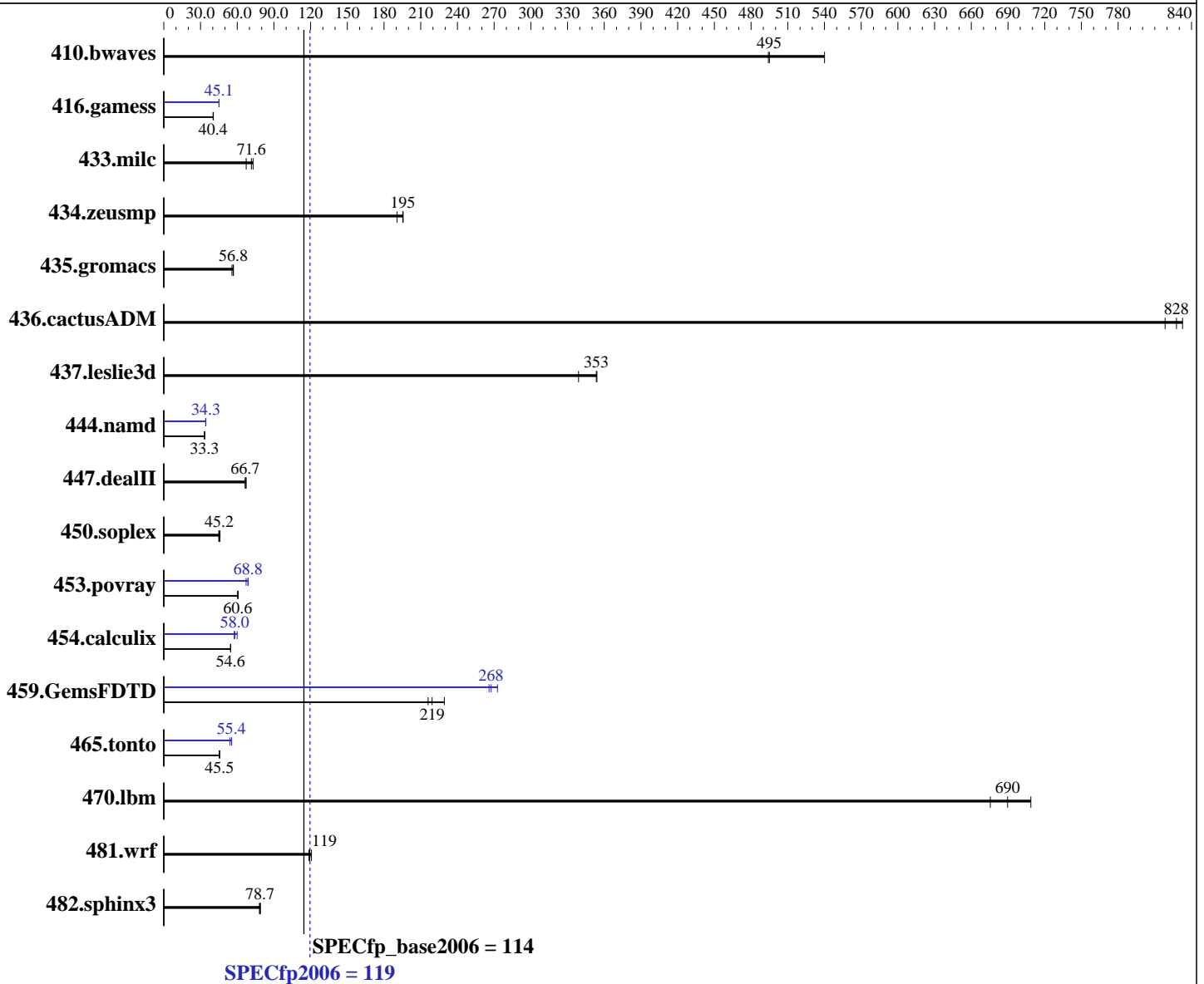
Test date: Jan-2016

Test sponsor: Dell Inc.

Hardware Availability: Mar-2016

Tested by: Dell Inc.

Software Availability: Mar-2016



Hardware

CPU Name: Intel Xeon E5-2689 v4
 CPU Characteristics: Intel Turbo Boost Technology up to 3.80 GHz
 CPU MHz: 3100
 FPU: Integrated
 CPU(s) enabled: 20 cores, 2 chips, 10 cores/chip, 2 threads/core
 CPU(s) orderable: 1,2 chip
 Primary Cache: 32 KB I + 32 KB D on chip per core
 Secondary Cache: 256 KB I+D on chip per core

Continued on next page

Software

Operating System: Red Hat Enterprise Linux Server release 7.1 (Maipo)
 3.10.0-229.el7.x86_64
 Compiler: C/C++: Version 16.0.0.101 of Intel C++ Studio XE for Linux;
 Fortran: Version 16.0.0.101 of Intel Fortran Studio XE for Linux
 Auto Parallel: Yes
 File System: xfs

Continued on next page



SPEC CFP2006 Result

Copyright 2006-2016 Standard Performance Evaluation Corporation

Dell Inc.

SPECfp2006 = 119

PowerEdge R730 (Intel Xeon E5-2689 v4, 3.10 GHz)

SPECfp_base2006 = 114

CPU2006 license: 55

Test date: Jan-2016

Test sponsor: Dell Inc.

Hardware Availability: Mar-2016

Tested by: Dell Inc.

Software Availability: Mar-2016

L3 Cache: 25 MB I+D on chip per chip
 Other Cache: None
 Memory: 512 GB (16 x 32 GB 2Rx4 PC4-2400T-R)
 Disk Subsystem: 1 x 120 GB SATA SSD
 Other Hardware: None

System State: Run level 3 (multi-user)
 Base Pointers: 64-bit
 Peak Pointers: 32/64-bit
 Other Software: None

Results Table

| Benchmark | Base | | | | | | Peak | | | | | |
|---------------|-------------|-------------|-------------|-------------|-------------|-------------|-------------|-------------|-------------|-------------|-------------|-------------|
| | Seconds | Ratio | Seconds | Ratio | Seconds | Ratio | Seconds | Ratio | Seconds | Ratio | Seconds | Ratio |
| 410.bwaves | 27.5 | 494 | <u>27.5</u> | <u>495</u> | 25.2 | 540 | 27.5 | 494 | <u>27.5</u> | <u>495</u> | 25.2 | 540 |
| 416.gamess | 483 | 40.5 | 486 | 40.3 | <u>484</u> | <u>40.4</u> | 433 | 45.2 | <u>434</u> | <u>45.1</u> | 434 | 45.1 |
| 433.milc | 126 | 73.0 | <u>128</u> | <u>71.6</u> | 136 | 67.3 | 126 | 73.0 | <u>128</u> | <u>71.6</u> | 136 | 67.3 |
| 434.zeusmp | <u>46.6</u> | <u>195</u> | 47.7 | 191 | 46.5 | 196 | <u>46.6</u> | <u>195</u> | 47.7 | 191 | 46.5 | 196 |
| 435.gromacs | 128 | 55.7 | <u>126</u> | <u>56.8</u> | 125 | 56.9 | 128 | 55.7 | <u>126</u> | <u>56.8</u> | 125 | 56.9 |
| 436.cactusADM | 14.6 | 818 | 14.4 | 833 | <u>14.4</u> | <u>828</u> | 14.6 | 818 | 14.4 | 833 | <u>14.4</u> | <u>828</u> |
| 437.leslie3d | <u>26.6</u> | <u>353</u> | 27.7 | 339 | 26.6 | 354 | <u>26.6</u> | <u>353</u> | 27.7 | 339 | 26.6 | 354 |
| 444.namd | <u>241</u> | <u>33.3</u> | 240 | 33.4 | 241 | 33.3 | 233 | 34.4 | <u>234</u> | <u>34.3</u> | 235 | 34.2 |
| 447.dealII | 172 | 66.6 | <u>172</u> | <u>66.7</u> | 170 | 67.4 | 172 | 66.6 | <u>172</u> | <u>66.7</u> | 170 | 67.4 |
| 450.soplex | 181 | 46.0 | <u>184</u> | <u>45.2</u> | 186 | 44.9 | 181 | 46.0 | <u>184</u> | <u>45.2</u> | 186 | 44.9 |
| 453.povray | <u>87.8</u> | <u>60.6</u> | 87.6 | 60.7 | 88.2 | 60.3 | 79.1 | 67.3 | <u>77.3</u> | <u>68.8</u> | 77.2 | 68.9 |
| 454.calculix | <u>151</u> | <u>54.6</u> | 151 | 54.6 | 151 | 54.6 | <u>142</u> | <u>58.0</u> | 143 | 57.5 | 138 | 59.9 |
| 459.GemsFDTD | 49.1 | 216 | <u>48.4</u> | <u>219</u> | 46.3 | 229 | 39.9 | 266 | 38.9 | 273 | <u>39.7</u> | <u>268</u> |
| 465.tonto | 216 | 45.5 | 216 | 45.6 | <u>216</u> | <u>45.5</u> | 177 | 55.5 | <u>178</u> | <u>55.4</u> | 182 | 54.1 |
| 470.lbm | <u>19.9</u> | <u>690</u> | 19.4 | 709 | 20.3 | 676 | <u>19.9</u> | <u>690</u> | 19.4 | 709 | 20.3 | 676 |
| 481.wrf | 94.1 | 119 | 92.5 | 121 | <u>93.6</u> | <u>119</u> | 94.1 | 119 | 92.5 | 121 | <u>93.6</u> | <u>119</u> |
| 482.sphinx3 | 247 | 78.9 | 249 | 78.1 | <u>248</u> | <u>78.7</u> | 247 | 78.9 | 249 | 78.1 | <u>248</u> | <u>78.7</u> |

Results appear in the order in which they were run. Bold underlined text indicates a median measurement.

Operating System Notes

Stack size set to unlimited using "ulimit -s unlimited"

Platform Notes

BIOS settings:
 Snoop Mode set to Opportunistic Snoop Broadcast
 Virtualization Technology disabled
 System Profile set to Performance
 Memory Patrol Scrub disabled
 ClE/Cstates enabled
 Sysinfo program /root/cpu2006-1.2/config/sysinfo.rev6914
 \$Rev: 6914 \$ \$Date:: 2014-06-25 #\$ e3fbb8667b5a285932ceab81e28219e1
 running on localhost.localdomain Thu Jan 7 21:47:22 2016

Continued on next page



SPEC CFP2006 Result

Copyright 2006-2016 Standard Performance Evaluation Corporation

Dell Inc.

SPECfp2006 = 119

PowerEdge R730 (Intel Xeon E5-2689 v4, 3.10 GHz)

SPECfp_base2006 = 114

CPU2006 license: 55

Test date: Jan-2016

Test sponsor: Dell Inc.

Hardware Availability: Mar-2016

Tested by: Dell Inc.

Software Availability: Mar-2016

Platform Notes (Continued)

This section contains SUT (System Under Test) info as seen by some common utilities. To remove or add to this section, see: <http://www.spec.org/cpu2006/Docs/config.html#sysinfo>

```

From /proc/cpuinfo
model name      : Intel(R) Xeon(R) CPU E5-2689 v4 @ 3.10GHz
 2 "physical id"s (chips)
 40 "processors"
cores, siblings (Caution: counting these is hw and system dependent. The
following excerpts from /proc/cpuinfo might not be reliable. Use with
caution.)
  cpu cores    : 10
  siblings    : 20
  physical 0: cores 0 1 2 3 4 8 9 10 11 12
  physical 1: cores 0 1 2 3 4 8 9 10 11 12
cache size    : 25600 KB

```

```

From /proc/meminfo
MemTotal:      528283084 kB
HugePages_Total: 0
Hugepagesize:  2048 kB

```

```

From /etc/*release* /etc/*version*
os-release:
NAME="Red Hat Enterprise Linux Server"
VERSION="7.1 (Maipo)"
ID="rhel"
ID_LIKE="fedora"
VERSION_ID="7.1"
PRETTY_NAME="Red Hat Enterprise Linux Server 7.1 (Maipo)"
ANSI_COLOR="0;31"
CPE_NAME="cpe:/o:redhat:enterprise_linux:7.1:GA:server"
redhat-release: Red Hat Enterprise Linux Server release 7.1 (Maipo)
system-release: Red Hat Enterprise Linux Server release 7.1 (Maipo)
system-release-cpe: cpe:/o:redhat:enterprise_linux:7.1:ga:server

```

```

uname -a:
Linux localhost.localdomain 3.10.0-229.el7.x86_64 #1 SMP Thu Jan 29 18:37:38
EST 2015 x86_64 x86_64 x86_64 GNU/Linux

```

run-level 3 Jan 7 17:05

```

SPEC is set to: /root/cpu2006-1.2
Filesystem      Type  Size  Used Avail Use% Mounted on
/dev/sda2       xfs   102G  8.7G  93G   9% /

```

Additional information from dmidecode:

Warning: Use caution when you interpret this section. The 'dmidecode' program reads system data which is "intended to allow hardware to be accurately determined", but the intent may not be met, as there are frequent changes to hardware, firmware, and the "DMTF SMBIOS" standard.

Continued on next page



SPEC CFP2006 Result

Copyright 2006-2016 Standard Performance Evaluation Corporation

Dell Inc.

SPECfp2006 = 119

PowerEdge R730 (Intel Xeon E5-2689 v4, 3.10 GHz)

SPECfp_base2006 = 114

CPU2006 license: 55

Test date: Jan-2016

Test sponsor: Dell Inc.

Hardware Availability: Mar-2016

Tested by: Dell Inc.

Software Availability: Mar-2016

Platform Notes (Continued)

BIOS Dell Inc. 1.7.11 12/04/2015

Memory:

16x 00CE00B300CE M393A4K40BB1-CRC 32 GB 2 rank 2400 MHz

8x Not Specified Not Specified

(End of data from sysinfo program)

General Notes

Environment variables set by runspec before the start of the run:

KMP_AFFINITY = "granularity=fine,compact,1,0"

LD_LIBRARY_PATH = "/root/cpu2006-1.2/libs/32:/root/cpu2006-1.2/libs/64:/root/cpu2006-1.2/sh"

OMP_NUM_THREADS = "20"

Binaries compiled on a system with 1x Intel Core i5-4670K CPU + 32GB memory using RedHat EL 7.1

Transparent Huge Pages enabled with:

echo always > /sys/kernel/mm/transparent_hugepage/enabled

Base Compiler Invocation

C benchmarks:

icc -m64

C++ benchmarks:

icpc -m64

Fortran benchmarks:

ifort -m64

Benchmarks using both Fortran and C:

icc -m64 ifort -m64

Base Portability Flags

410.bwaves: -DSPEC_CPU_LP64

416.gamess: -DSPEC_CPU_LP64

433.milc: -DSPEC_CPU_LP64

434.zeusmp: -DSPEC_CPU_LP64

435.gromacs: -DSPEC_CPU_LP64 -nofor_main

436.cactusADM: -DSPEC_CPU_LP64 -nofor_main

437.leslie3d: -DSPEC_CPU_LP64

444.namd: -DSPEC_CPU_LP64

447.dealII: -DSPEC_CPU_LP64

450.soplex: -DSPEC_CPU_LP64

453.povray: -DSPEC_CPU_LP64

Continued on next page

Standard Performance Evaluation Corporation

info@spec.org

http://www.spec.org/

Page 4



SPEC CFP2006 Result

Copyright 2006-2016 Standard Performance Evaluation Corporation

Dell Inc.

SPECfp2006 = 119

PowerEdge R730 (Intel Xeon E5-2689 v4, 3.10 GHz)

SPECfp_base2006 = 114

CPU2006 license: 55

Test date: Jan-2016

Test sponsor: Dell Inc.

Hardware Availability: Mar-2016

Tested by: Dell Inc.

Software Availability: Mar-2016

Base Portability Flags (Continued)

```

454.calculix: -DSPEC_CPU_LP64 -nofor_main
459.GemsFDTD: -DSPEC_CPU_LP64
465.tonto: -DSPEC_CPU_LP64
470.lbm: -DSPEC_CPU_LP64
481.wrf: -DSPEC_CPU_LP64 -DSPEC_CPU_CASE_FLAG -DSPEC_CPU_LINUX
482.sphinx3: -DSPEC_CPU_LP64

```

Base Optimization Flags

```

C benchmarks:
-xCORE-AVX2 -ipo -O3 -no-prec-div -parallel -opt-prefetch
-ansi-alias

C++ benchmarks:
-xCORE-AVX2 -ipo -O3 -no-prec-div -opt-prefetch -ansi-alias

Fortran benchmarks:
-xCORE-AVX2 -ipo -O3 -no-prec-div -parallel -opt-prefetch

Benchmarks using both Fortran and C:
-xCORE-AVX2 -ipo -O3 -no-prec-div -parallel -opt-prefetch
-ansi-alias

```

Peak Compiler Invocation

```

C benchmarks:
icc -m64

C++ benchmarks:
icpc -m64

Fortran benchmarks:
ifort -m64

Benchmarks using both Fortran and C:
icc -m64 ifort -m64

```

Peak Portability Flags

Same as Base Portability Flags



SPEC CFP2006 Result

Copyright 2006-2016 Standard Performance Evaluation Corporation

Dell Inc.

SPECfp2006 = 119

PowerEdge R730 (Intel Xeon E5-2689 v4, 3.10 GHz)

SPECfp_base2006 = 114

CPU2006 license: 55

Test date: Jan-2016

Test sponsor: Dell Inc.

Hardware Availability: Mar-2016

Tested by: Dell Inc.

Software Availability: Mar-2016

Peak Optimization Flags

C benchmarks:

433.milc: basepeak = yes

470.lbm: basepeak = yes

482.sphinx3: basepeak = yes

C++ benchmarks:

444.namd: -xCORE-AVX2(pass 2) -prof-gen:threadsafe(pass 1)
-ipo(pass 2) -O3(pass 2) -no-prec-div(pass 2)
-par-num-threads=1(pass 1) -prof-use(pass 2) -fno-alias
-auto-ilp32

447.dealII: basepeak = yes

450.soplex: basepeak = yes

453.povray: -xCORE-AVX2(pass 2) -prof-gen:threadsafe(pass 1)
-ipo(pass 2) -O3(pass 2) -no-prec-div(pass 2)
-par-num-threads=1(pass 1) -prof-use(pass 2) -unroll4
-ansi-alias

Fortran benchmarks:

410.bwaves: basepeak = yes

416.gamess: -xCORE-AVX2(pass 2) -prof-gen:threadsafe(pass 1)
-ipo(pass 2) -O3(pass 2) -no-prec-div(pass 2)
-par-num-threads=1(pass 1) -prof-use(pass 2) -unroll2
-inline-level=0 -scalar-rep-

434.zeusmp: basepeak = yes

437.leslie3d: basepeak = yes

459.GemsFDTD: -xCORE-AVX2(pass 2) -prof-gen:threadsafe(pass 1)
-ipo(pass 2) -O3(pass 2) -no-prec-div(pass 2)
-par-num-threads=1(pass 1) -prof-use(pass 2) -unroll2
-inline-level=0 -opt-prefetch -parallel

465.tonto: -xCORE-AVX2(pass 2) -prof-gen:threadsafe(pass 1)
-ipo(pass 2) -O3(pass 2) -no-prec-div(pass 2)
-par-num-threads=1(pass 1) -prof-use(pass 2) -inline-calloc
-opt-malloc-options=3 -auto -unroll4

Benchmarks using both Fortran and C:

Continued on next page



SPEC CFP2006 Result

Copyright 2006-2016 Standard Performance Evaluation Corporation

Dell Inc.

SPECfp2006 = 119

PowerEdge R730 (Intel Xeon E5-2689 v4, 3.10 GHz)

SPECfp_base2006 = 114

CPU2006 license: 55

Test date: Jan-2016

Test sponsor: Dell Inc.

Hardware Availability: Mar-2016

Tested by: Dell Inc.

Software Availability: Mar-2016

Peak Optimization Flags (Continued)

435.gromacs: basepeak = yes

436.cactusADM: basepeak = yes

454.calculix: -xCORE-AVX2 -ipo -O3 -no-prec-div -auto-ilp32 -ansi-alias

481.wrf: basepeak = yes

The flags files that were used to format this result can be browsed at

<http://www.spec.org/cpu2006/flags/Intel-ic16.0-official-linux64.html>

<http://www.spec.org/cpu2006/flags/Dell-Platform-Settings-V1.2-revD.20151006.html>

You can also download the XML flags sources by saving the following links:

<http://www.spec.org/cpu2006/flags/Intel-ic16.0-official-linux64.xml>

<http://www.spec.org/cpu2006/flags/Dell-Platform-Settings-V1.2-revD.20151006.xml>

SPEC and SPECfp are registered trademarks of the Standard Performance Evaluation Corporation. All other brand and product names appearing in this result are trademarks or registered trademarks of their respective holders.

For questions about this result, please contact the tester.
For other inquiries, please contact webmaster@spec.org.

Tested with SPEC CPU2006 v1.2.
Report generated on Tue Apr 5 14:53:42 2016 by SPEC CPU2006 PS/PDF formatter v6932.
Originally published on 5 April 2016.