



SPEC® CINT2006 Result

Copyright 2006-2015 Standard Performance Evaluation Corporation

Dell Inc.

SPECint®2006 = 53.8

PowerEdge FC830 (Intel Xeon E5-4669 v3, 2.10 GHz)

SPECint_base2006 = 52.3

CPU2006 license: 55

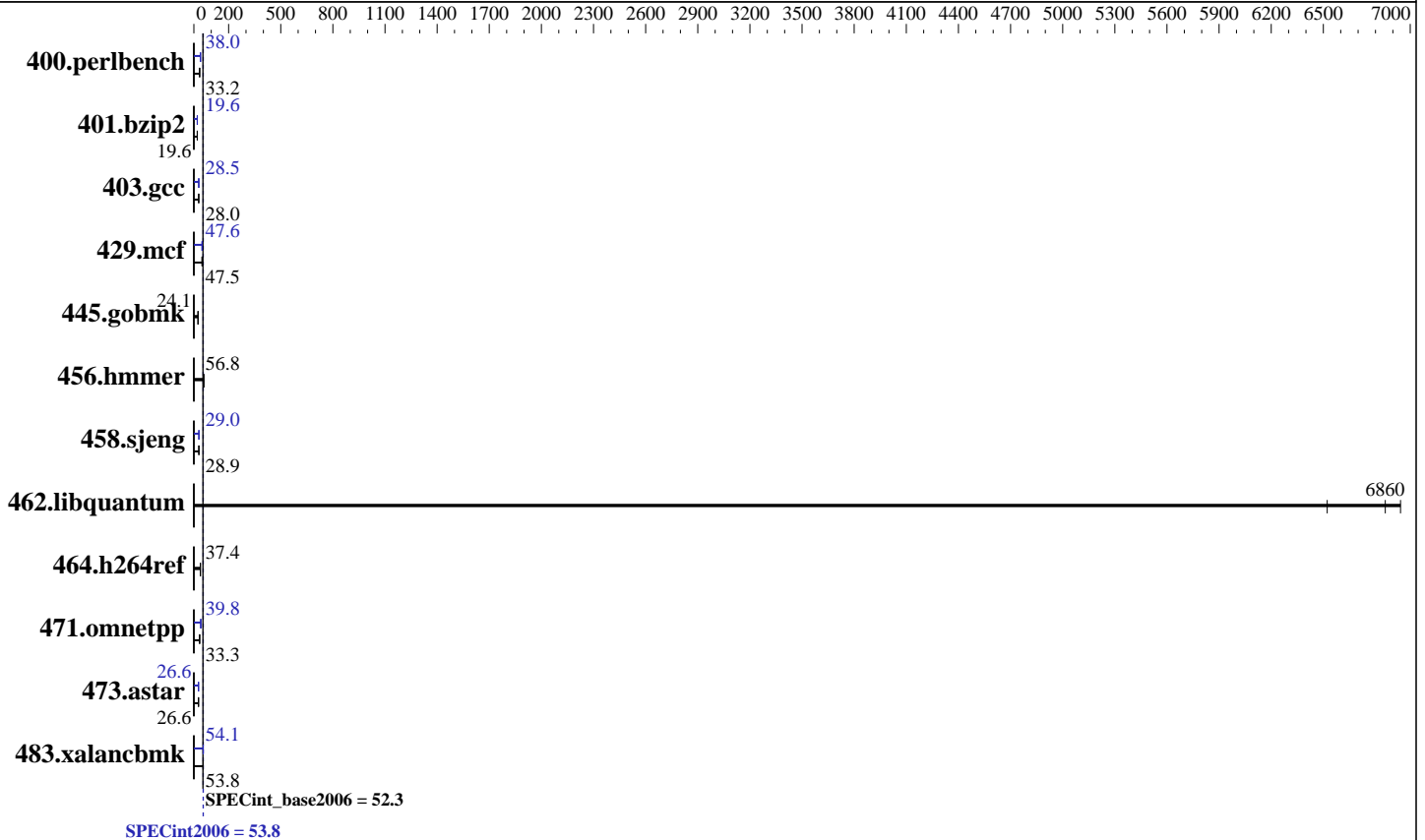
Test date: Jan-2015

Test sponsor: Dell Inc.

Hardware Availability: Jun-2015

Tested by: Dell Inc.

Software Availability: Jun-2015



Hardware

CPU Name: Intel Xeon E5-4669 v3
 CPU Characteristics: Intel Turbo Boost Technology up to 2.90 GHz
 CPU MHz: 2100
 FPU: Integrated
 CPU(s) enabled: 72 cores, 4 chips, 18 cores/chip, 2 threads/core
 CPU(s) orderable: 4 chip
 Primary Cache: 32 KB I + 32 KB D on chip per core
 Secondary Cache: 256 KB I+D on chip per core
 L3 Cache: 45 MB I+D on chip per chip
 Other Cache: None
 Memory: 512 GB (32 x 16 GB 2Rx4 PC4-2133P-R)
 Disk Subsystem: 1 x 400 GB 7200 RPM SATA
 Other Hardware: None

Software

Operating System: SUSE Linux Enterprise Server 12
 3.12.28-4-default
 Compiler: C/C++: Version 15.0.0.090 of Intel C++ Studio XE for Linux
 Auto Parallel: Yes
 File System: ext4
 System State: Run level 3 (multi-user)
 Base Pointers: 32/64-bit
 Peak Pointers: 32/64-bit
 Other Software: Microquill SmartHeap V10.0



SPEC CINT2006 Result

Copyright 2006-2015 Standard Performance Evaluation Corporation

Dell Inc.

SPECint2006 = 53.8

PowerEdge FC830 (Intel Xeon E5-4669 v3, 2.10 GHz)

SPECint_base2006 = 52.3

CPU2006 license: 55
Test sponsor: Dell Inc.
Tested by: Dell Inc.

Test date: Jan-2015
Hardware Availability: Jun-2015
Software Availability: Jun-2015

Results Table

Benchmark	Base						Peak					
	Seconds	Ratio	Seconds	Ratio	Seconds	Ratio	Seconds	Ratio	Seconds	Ratio	Seconds	Ratio
400.perlbench	<u>294</u>	<u>33.2</u>	296	33.0	293	33.3	257	38.0	<u>257</u>	<u>38.0</u>	257	38.0
401.bzip2	495	19.5	493	19.6	<u>493</u>	<u>19.6</u>	<u>493</u>	<u>19.6</u>	493	19.6	493	19.6
403.gcc	288	28.0	<u>288</u>	<u>28.0</u>	289	27.8	282	28.5	<u>283</u>	<u>28.5</u>	291	27.6
429.mcf	196	46.4	188	48.4	<u>192</u>	<u>47.5</u>	196	46.6	191	47.6	<u>192</u>	<u>47.6</u>
445.gobmk	435	24.1	<u>436</u>	<u>24.1</u>	437	24.0	435	24.1	<u>436</u>	<u>24.1</u>	437	24.0
456.hammer	164	56.8	164	56.9	<u>164</u>	<u>56.8</u>	164	56.8	164	56.9	<u>164</u>	<u>56.8</u>
458.sjeng	<u>418</u>	<u>28.9</u>	418	28.9	419	28.9	<u>417</u>	<u>29.0</u>	416	29.1	417	29.0
462.libquantum	3.18	6520	<u>3.02</u>	<u>6860</u>	2.98	6940	3.18	6520	<u>3.02</u>	<u>6860</u>	2.98	6940
464.h264ref	593	37.3	587	37.7	<u>591</u>	<u>37.4</u>	593	37.3	587	37.7	<u>591</u>	<u>37.4</u>
471.omnetpp	<u>188</u>	<u>33.3</u>	191	32.8	188	33.3	<u>157</u>	<u>39.8</u>	157	39.7	157	39.8
473.astar	<u>263</u>	<u>26.6</u>	265	26.5	262	26.8	<u>264</u>	<u>26.6</u>	264	26.6	261	26.9
483.xalancbmk	<u>128</u>	<u>53.8</u>	130	53.2	128	54.1	<u>128</u>	<u>54.1</u>	127	54.4	129	53.7

Results appear in the order in which they were run. Bold underlined text indicates a median measurement.

Submit Notes

The config file option 'submit' was used.

Operating System Notes

Stack size set to unlimited using "ulimit -s unlimited"

Platform Notes

BIOS settings:

Snoop Mode set to Home Snoop

Virtualization Technology disabled

System Profile set to Performance

Sysinfo program /root/cpu2006-1.2/config/sysinfo.rev6914

\$Rev: 6914 \$ \$Date: 2014-06-25 # \$ e3fbb8667b5a285932ceab81e28219e1

running on linux-k8qh Mon Jan 26 13:25:36 2015

This section contains SUT (System Under Test) info as seen by some common utilities. To remove or add to this section, see:

<http://www.spec.org/cpu2006/Docs/config.html#sysinfo>

From /proc/cpuinfo

model name : Intel(R) Xeon(R) CPU E5-4669 v3 @ 2.10GHz

4 "physical id"s (chips)

144 "processors"

cores, siblings (Caution: counting these is hw and system dependent. The following excerpts from /proc/cpuinfo might not be reliable. Use with caution.)

Continued on next page



SPEC CINT2006 Result

Copyright 2006-2015 Standard Performance Evaluation Corporation

Dell Inc.

SPECint2006 = 53.8

PowerEdge FC830 (Intel Xeon E5-4669 v3, 2.10 GHz)

SPECint_base2006 = 52.3

CPU2006 license: 55

Test date: Jan-2015

Test sponsor: Dell Inc.

Hardware Availability: Jun-2015

Tested by: Dell Inc.

Software Availability: Jun-2015

Platform Notes (Continued)

```

cpu cores : 18
siblings  : 36
physical 0: cores 0 1 2 3 4 8 9 10 11 16 17 18 19 20 24 25 26 27
physical 1: cores 0 1 2 3 4 8 9 10 11 16 17 18 19 20 24 25 26 27
physical 2: cores 0 1 2 3 4 8 9 10 11 16 17 18 19 20 24 25 26 27
physical 3: cores 0 1 2 3 4 8 9 10 11 16 17 18 19 20 24 25 26 27
cache size : 46080 KB

```

From /proc/meminfo

```

MemTotal:      529334376 kB
HugePages_Total:      0
Hugepagesize:    2048 kB

```

/usr/bin/lsb_release -d

SUSE Linux Enterprise Server 12

From /etc/*release* /etc/*version*

```

SuSE-release:
SUSE Linux Enterprise Server 12 (x86_64)
VERSION = 12
PATCHLEVEL = 0
# This file is deprecated and will be removed in a future service pack or
# release.
# Please check /etc/os-release for details about this release.

```

os-release:

```

NAME="SLES"
VERSION="12"
VERSION_ID="12"
PRETTY_NAME="SUSE Linux Enterprise Server 12"
ID="sles"
ANSI_COLOR="0;32"
CPE_NAME="cpe:/o:suse:sles:12"

```

uname -a:

```

Linux linux-k8qh 3.12.28-4-default #1 SMP Thu Sep 25 17:02:34 UTC 2014
(9879bd4) x86_64 x86_64 x86_64 GNU/Linux

```

run-level 3 Jan 26 13:17

SPEC is set to: /root/cpu2006-1.2

```

Filesystem      Type  Size  Used Avail Use% Mounted on
/dev/sda2       ext4  267G  8.6G  257G   4% /

```

Additional information from dmidecode:

Warning: Use caution when you interpret this section. The 'dmidecode' program reads system data which is "intended to allow hardware to be accurately determined", but the intent may not be met, as there are frequent changes to hardware, firmware, and the "DMTF SMBIOS" standard.

BIOS Dell Inc. 0.4.0 01/08/2015

Memory:

4x 002C00B3002C 36ASF2G72PZ-2G1A1 16 GB 2 rank 2133 MHz

Continued on next page



SPEC CINT2006 Result

Copyright 2006-2015 Standard Performance Evaluation Corporation

Dell Inc.

SPECint2006 = 53.8

PowerEdge FC830 (Intel Xeon E5-4669 v3, 2.10 GHz)

SPECint_base2006 = 52.3

CPU2006 license: 55

Test date: Jan-2015

Test sponsor: Dell Inc.

Hardware Availability: Jun-2015

Tested by: Dell Inc.

Software Availability: Jun-2015

Platform Notes (Continued)

1x 00AD00B300AD HMA42GR7MFR4N-TFTD 16 GB 2 rank 2133 MHz
11x 00AD063200AD HMA42GR7MFR4N-TF 16 GB 2 rank 2133 MHz
5x 00AD063200AD HMA42GR7MFR4N-TFT1 16 GB 2 rank 2133 MHz
11x 00CE00B300CE M393A2G40DB0-CPB 16 GB 2 rank 2133 MHz
16x Not Specified Not Specified

(End of data from sysinfo program)

General Notes

Environment variables set by runspec before the start of the run:

KMP_AFFINITY = "granularity=fine,scatter"

LD_LIBRARY_PATH = "/root/cpu2006-1.2/libs/32:/root/cpu2006-1.2/libs/64:/root/cpu2006-1.2/sh"

OMP_NUM_THREADS = "72"

Binaries compiled on a system with 1x Core i5-4670K CPU + 16GB memory using RedHat EL 7.0

Transparent Huge Pages enabled with:

echo always > /sys/kernel/mm/transparent_hugepage/enabled

Base Compiler Invocation

C benchmarks:

icc -m64

C++ benchmarks:

icpc -m64

Base Portability Flags

400.perlbench: -DSPEC_CPU_LP64 -DSPEC_CPU_LINUX_X64
401.bzip2: -DSPEC_CPU_LP64
403.gcc: -DSPEC_CPU_LP64
429.mcf: -DSPEC_CPU_LP64
445.gobmk: -DSPEC_CPU_LP64
456.hmmer: -DSPEC_CPU_LP64
458.sjeng: -DSPEC_CPU_LP64
462.libquantum: -DSPEC_CPU_LP64 -DSPEC_CPU_LINUX
464.h264ref: -DSPEC_CPU_LP64
471.omnetpp: -DSPEC_CPU_LP64
473.astar: -DSPEC_CPU_LP64
483.xalanbmk: -DSPEC_CPU_LP64 -DSPEC_CPU_LINUX



SPEC CINT2006 Result

Copyright 2006-2015 Standard Performance Evaluation Corporation

Dell Inc.

SPECint2006 = 53.8

PowerEdge FC830 (Intel Xeon E5-4669 v3, 2.10 GHz)

SPECint_base2006 = 52.3

CPU2006 license: 55

Test date: Jan-2015

Test sponsor: Dell Inc.

Hardware Availability: Jun-2015

Tested by: Dell Inc.

Software Availability: Jun-2015

Base Optimization Flags

C benchmarks:

-xCORE-AVX2 -ipo -O3 -no-prec-div -parallel -opt-prefetch -auto-p32

C++ benchmarks:

-xCORE-AVX2 -ipo -O3 -no-prec-div -opt-prefetch -auto-p32
-Wl,-z,muldefs -L/sh -lsmartheap64

Base Other Flags

C benchmarks:

403.gcc: -Dalloca=_alloca

Peak Compiler Invocation

C benchmarks (except as noted below):

icc -m64

400.perlbench: icc -m32 -L/opt/intel/composer_xe_2015/lib/ia32

C++ benchmarks (except as noted below):

icpc -m32 -L/opt/intel/composer_xe_2015/lib/ia32

473.astar: icpc -m64

Peak Portability Flags

400.perlbench: -DSPEC_CPU_LINUX_IA32

401.bzip2: -DSPEC_CPU_LP64

403.gcc: -DSPEC_CPU_LP64

429.mcf: -DSPEC_CPU_LP64

445.gobmk: -DSPEC_CPU_LP64

456.hmmer: -DSPEC_CPU_LP64

458.sjeng: -DSPEC_CPU_LP64

462.libquantum: -DSPEC_CPU_LP64 -DSPEC_CPU_LINUX

464.h264ref: -DSPEC_CPU_LP64

473.astar: -DSPEC_CPU_LP64

483.xalancbmk: -DSPEC_CPU_LINUX



SPEC CINT2006 Result

Copyright 2006-2015 Standard Performance Evaluation Corporation

Dell Inc.

SPECint2006 = 53.8

PowerEdge FC830 (Intel Xeon E5-4669 v3, 2.10 GHz)

SPECint_base2006 = 52.3

CPU2006 license: 55

Test date: Jan-2015

Test sponsor: Dell Inc.

Hardware Availability: Jun-2015

Tested by: Dell Inc.

Software Availability: Jun-2015

Peak Optimization Flags

C benchmarks:

400.perlbench: -xCORE-AVX2(pass 2) -prof-gen(pass 1) -ipo(pass 2)
-O3(pass 2) -no-prec-div(pass 2) -prof-use(pass 2)
-opt-prefetch -ansi-alias

401.bzip2: -xCORE-AVX2(pass 2) -prof-gen(pass 1) -ipo(pass 2)
-O3(pass 2) -no-prec-div -prof-use(pass 2) -auto-ilp32
-opt-prefetch -ansi-alias

403.gcc: -xCORE-AVX2 -ipo -O3 -no-prec-div -inline-calloc
-opt-malloc-options=3 -auto-ilp32

429.mcf: -xCORE-AVX2 -ipo -O3 -no-prec-div -parallel
-opt-prefetch -auto-p32

445.gobmk: basepeak = yes

456.hmmer: basepeak = yes

458.sjeng: -xCORE-AVX2(pass 2) -prof-gen(pass 1) -ipo(pass 2)
-O3(pass 2) -no-prec-div(pass 2) -prof-use(pass 2)
-unroll4

462.libquantum: basepeak = yes

464.h264ref: basepeak = yes

C++ benchmarks:

471.omnetpp: -xCORE-AVX2(pass 2) -prof-gen(pass 1) -ipo(pass 2)
-O3(pass 2) -no-prec-div(pass 2) -prof-use(pass 2)
-opt-ra-region-strategy=block -ansi-alias
-Wl,-z,muldefs -L/sh -lsmartheap

473.astar: -xCORE-AVX2 -ipo -O3 -no-prec-div -opt-prefetch
-auto-p32 -Wl,-z,muldefs -L/sh -lsmartheap64

483.xalancbmk: -xCORE-AVX2 -ipo -O3 -no-prec-div -opt-prefetch
-ansi-alias -Wl,-z,muldefs -L/sh -lsmartheap

Peak Other Flags

C benchmarks:

403.gcc: -Dalloca=_alloca



SPEC CINT2006 Result

Copyright 2006-2015 Standard Performance Evaluation Corporation

Dell Inc.

SPECint2006 = 53.8

PowerEdge FC830 (Intel Xeon E5-4669 v3, 2.10 GHz)

SPECint_base2006 = 52.3

CPU2006 license: 55

Test date: Jan-2015

Test sponsor: Dell Inc.

Hardware Availability: Jun-2015

Tested by: Dell Inc.

Software Availability: Jun-2015

The flags files that were used to format this result can be browsed at

<http://www.spec.org/cpu2006/flags/Intel-ic15.0-official-linux64.html>

<http://www.spec.org/cpu2006/flags/Dell-Platform-Settings-V1.2-revE.20150421.html>

You can also download the XML flags sources by saving the following links:

<http://www.spec.org/cpu2006/flags/Intel-ic15.0-official-linux64.xml>

<http://www.spec.org/cpu2006/flags/Dell-Platform-Settings-V1.2-revE.20150421.xml>

SPEC and SPECint are registered trademarks of the Standard Performance Evaluation Corporation. All other brand and product names appearing in this result are trademarks or registered trademarks of their respective holders.

For questions about this result, please contact the tester.
For other inquiries, please contact webmaster@spec.org.

Tested with SPEC CPU2006 v1.2.
Report generated on Tue Jun 2 12:38:41 2015 by SPEC CPU2006 PS/PDF formatter v6932.
Originally published on 2 June 2015.