



SPEC[®] CINT2006 Result

Copyright 2006-2015 Standard Performance Evaluation Corporation

Fujitsu

SPECint[®]_rate2006 = 913

PRIMERGY RX2560 M1, Intel Xeon E5-2660 v3, 2.6 GHz

SPECint_rate_base2006 = 885

CPU2006 license: 19

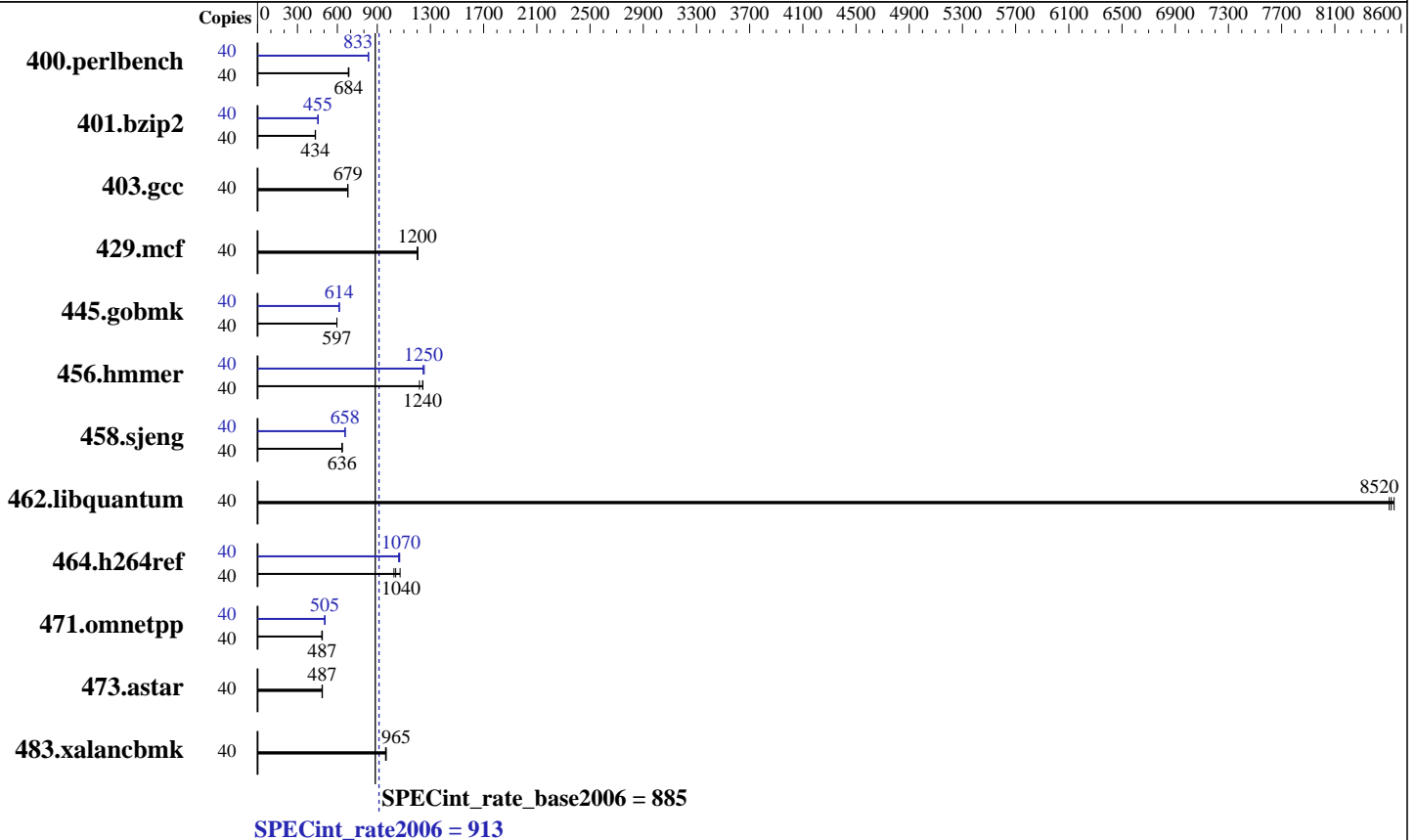
Test sponsor: Fujitsu

Tested by: Fujitsu

Test date: Apr-2015

Hardware Availability: Apr-2015

Software Availability: Nov-2013



Hardware

CPU Name: Intel Xeon E5-2660 v3
 CPU Characteristics: Intel Turbo Boost Technology up to 3.30 GHz
 CPU MHz: 2600
 FPU: Integrated
 CPU(s) enabled: 20 cores, 2 chips, 10 cores/chip, 2 threads/core
 CPU(s) orderable: 1,2 chip
 Primary Cache: 32 KB I + 32 KB D on chip per core
 Secondary Cache: 256 KB I+D on chip per core
 L3 Cache: 25 MB I+D on chip per chip
 Other Cache: None
 Memory: 256 GB (16 x 16 GB 2Rx4 PC4-2133P-R)
 Disk Subsystem: 1 x SATA, 500 GB, 7200 RPM
 Other Hardware: None

Software

Operating System: Red Hat Enterprise Linux Server release 6.6 (Santiago)
 2.6.32-504.el6.x86_64
 Compiler: C/C++: Version 14.0.0.080 of Intel C++ Studio XE for Linux
 Auto Parallel: No
 File System: ext4
 System State: Run level 3 (multi-user)
 Base Pointers: 32-bit
 Peak Pointers: 32/64-bit
 Other Software: Microquill SmartHeap V10.0



SPEC CINT2006 Result

Copyright 2006-2015 Standard Performance Evaluation Corporation

Fujitsu

SPECint_rate2006 = 913

PRIMERGY RX2560 M1, Intel Xeon E5-2660 v3, 2.6 GHz

SPECint_rate_base2006 = 885

CPU2006 license: 19
Test sponsor: Fujitsu
Tested by: Fujitsu

Test date: Apr-2015
Hardware Availability: Apr-2015
Software Availability: Nov-2013

Results Table

Benchmark	Base							Peak						
	Copies	Seconds	Ratio	Seconds	Ratio	Seconds	Ratio	Copies	Seconds	Ratio	Seconds	Ratio	Seconds	Ratio
400.perlbench	40	<u>572</u>	<u>684</u>	569	687	572	683	40	<u>469</u>	<u>833</u>	469	833	468	834
401.bzip2	40	885	436	<u>889</u>	<u>434</u>	889	434	40	847	456	851	453	<u>849</u>	<u>455</u>
403.gcc	40	475	677	474	679	<u>474</u>	<u>679</u>	40	475	677	474	679	<u>474</u>	<u>679</u>
429.mcf	40	303	1200	<u>303</u>	<u>1200</u>	304	1200	40	303	1200	<u>303</u>	<u>1200</u>	304	1200
445.gobmk	40	<u>703</u>	<u>597</u>	704	596	703	597	40	<u>684</u>	<u>614</u>	682	615	684	613
456.hammer	40	<u>301</u>	<u>1240</u>	300	1240	307	1220	40	298	1250	300	1250	<u>299</u>	<u>1250</u>
458.sjeng	40	<u>761</u>	<u>636</u>	761	636	761	636	40	<u>735</u>	<u>658</u>	735	658	735	658
462.libquantum	40	<u>97.2</u>	<u>8520</u>	97.4	8510	97.0	8550	40	<u>97.2</u>	<u>8520</u>	97.4	8510	97.0	8550
464.h264ref	40	826	1070	<u>852</u>	<u>1040</u>	863	1030	40	828	1070	835	1060	<u>829</u>	<u>1070</u>
471.omnetpp	40	518	483	513	487	<u>514</u>	<u>487</u>	40	496	504	<u>495</u>	<u>505</u>	492	508
473.astar	40	579	485	576	487	<u>577</u>	<u>487</u>	40	579	485	576	487	<u>577</u>	<u>487</u>
483.xalancbmk	40	285	968	<u>286</u>	<u>965</u>	287	962	40	285	968	<u>286</u>	<u>965</u>	287	962

Results appear in the order in which they were run. Bold underlined text indicates a median measurement.

Submit Notes

The numactl mechanism was used to bind copies to processors. The config file option 'submit' was used to generate numactl commands to bind each copy to a specific processor. For details, please see the config file.

Operating System Notes

Stack size set to unlimited using "ulimit -s unlimited"

Platform Notes

BIOS configuration:
Energy Performance = Performance
Utilization Profile = Unbalanced
QPI snoop mode: Cluster on Die
COD Enable = Enabled, Early Snoop = Disabled
CPU C1E Support = Disabled

General Notes

Environment variables set by runspec before the start of the run:
LD_LIBRARY_PATH = "/home/SPECcpu2006/libs/32:/home/SPECcpu2006/libs/64:/home/SPECcpu2006/sh"

Binaries compiled on a system with 1x Core i7-860 CPU + 8GB memory using RedHat EL 6.4
Transparent Huge Pages enabled with:
echo always > /sys/kernel/mm/redhat_transparent_hugepage/enabled

Continued on next page



SPEC CINT2006 Result

Copyright 2006-2015 Standard Performance Evaluation Corporation

Fujitsu

SPECint_rate2006 = 913

PRIMERGY RX2560 M1, Intel Xeon E5-2660 v3, 2.6 GHz

SPECint_rate_base2006 = 885

CPU2006 license: 19

Test sponsor: Fujitsu

Tested by: Fujitsu

Test date: Apr-2015

Hardware Availability: Apr-2015

Software Availability: Nov-2013

General Notes (Continued)

Filesystem page cache cleared with:
echo 1> /proc/sys/vm/drop_caches
runspec command invoked through numactl i.e.:
numactl --interleave=all runspec <etc>

This result was measured on the PRIMERGY RX2560 M1. The PRIMERGY RX2560 M1 and the PRIMERGY TX2560 M1 are electronically equivalent.
For information about Fujitsu please visit: <http://www.fujitsu.com>

Base Compiler Invocation

C benchmarks:
icc -m32

C++ benchmarks:
icpc -m32

Base Portability Flags

400.perlbench: -DSPEC_CPU_LINUX_IA32
462.libquantum: -DSPEC_CPU_LINUX
483.xalancbmk: -DSPEC_CPU_LINUX

Base Optimization Flags

C benchmarks:
-xCORE-AVX2 -ipo -O3 -no-prec-div -opt-prefetch
-opt-mem-layout-trans=3

C++ benchmarks:
-xCORE-AVX2 -ipo -O3 -no-prec-div -opt-prefetch
-opt-mem-layout-trans=3 -Wl,-z,muldefs -L/sh -lsmarthearp

Base Other Flags

C benchmarks:
403.gcc: -Dalloca=_alloca



SPEC CINT2006 Result

Copyright 2006-2015 Standard Performance Evaluation Corporation

Fujitsu

SPECint_rate2006 = 913

PRIMERGY RX2560 M1, Intel Xeon E5-2660 v3, 2.6 GHz

SPECint_rate_base2006 = 885

CPU2006 license: 19

Test sponsor: Fujitsu

Tested by: Fujitsu

Test date: Apr-2015

Hardware Availability: Apr-2015

Software Availability: Nov-2013

Peak Compiler Invocation

C benchmarks (except as noted below):

icc -m32

400.perlbench: icc -m64

401.bzip2: icc -m64

456.hmmer: icc -m64

458.sjeng: icc -m64

C++ benchmarks:

icpc -m32

Peak Portability Flags

400.perlbench: -DSPEC_CPU_LP64 -DSPEC_CPU_LINUX_X64

401.bzip2: -DSPEC_CPU_LP64

456.hmmer: -DSPEC_CPU_LP64

458.sjeng: -DSPEC_CPU_LP64

462.libquantum: -DSPEC_CPU_LINUX

483.xalancbmk: -DSPEC_CPU_LINUX

Peak Optimization Flags

C benchmarks:

400.perlbench: -xCORE-AVX2(pass 2) -prof-gen(pass 1) -ipo(pass 2)
-O3(pass 2) -no-prec-div(pass 2) -prof-use(pass 2)
-auto-ilp32

401.bzip2: -xCORE-AVX2(pass 2) -prof-gen(pass 1) -ipo(pass 2)
-O3(pass 2) -no-prec-div(pass 2) -prof-use(pass 2)
-opt-prefetch -auto-ilp32 -ansi-alias

403.gcc: basepeak = yes

429.mcf: basepeak = yes

445.gobmk: -xCORE-AVX2(pass 2) -prof-gen(pass 1) -prof-use(pass 2)
-ansi-alias -opt-mem-layout-trans=3

456.hmmer: -xCORE-AVX2 -ipo -O3 -no-prec-div -unroll2 -auto-ilp32

458.sjeng: -xCORE-AVX2(pass 2) -prof-gen(pass 1) -ipo(pass 2)
-O3(pass 2) -no-prec-div(pass 2) -prof-use(pass 2)
-unroll4 -auto-ilp32

Continued on next page



SPEC CINT2006 Result

Copyright 2006-2015 Standard Performance Evaluation Corporation

Fujitsu

SPECint_rate2006 = 913

PRIMERGY RX2560 M1, Intel Xeon E5-2660 v3, 2.6 GHz

SPECint_rate_base2006 = 885

CPU2006 license: 19

Test sponsor: Fujitsu

Tested by: Fujitsu

Test date: Apr-2015

Hardware Availability: Apr-2015

Software Availability: Nov-2013

Peak Optimization Flags (Continued)

462.libquantum: basepeak = yes

464.h264ref: -xCORE-AVX2(pass 2) -prof-gen(pass 1) -ipo(pass 2)
-O3(pass 2) -no-prec-div(pass 2) -prof-use(pass 2)
-unroll2 -ansi-alias

C++ benchmarks:

471.omnetpp: -xCORE-AVX2(pass 2) -prof-gen(pass 1) -ipo(pass 2)
-O3(pass 2) -no-prec-div(pass 2) -prof-use(pass 2)
-ansi-alias -opt-ra-region-strategy=block -Wl,-z,muldefs
-L/sh -lsmartheap

473.astar: basepeak = yes

483.xalancbmk: basepeak = yes

Peak Other Flags

C benchmarks:

403.gcc: -Dalloca=_alloca

The flags files that were used to format this result can be browsed at

<http://www.spec.org/cpu2006/flags/Intel-ic14.0-official-linux64-revB.html>

<http://www.spec.org/cpu2006/flags/Fujitsu-Platform-Settings-V1.2-HSW-RevA.html>

You can also download the XML flags sources by saving the following links:

<http://www.spec.org/cpu2006/flags/Intel-ic14.0-official-linux64-revB.xml>

<http://www.spec.org/cpu2006/flags/Fujitsu-Platform-Settings-V1.2-HSW-RevA.xml>

SPEC and SPECint are registered trademarks of the Standard Performance Evaluation Corporation. All other brand and product names appearing in this result are trademarks or registered trademarks of their respective holders.

For questions about this result, please contact the tester.
For other inquiries, please contact webmaster@spec.org.

Tested with SPEC CPU2006 v1.2.

Report generated on Tue May 19 18:16:26 2015 by SPEC CPU2006 PS/PDF formatter v6932.

Originally published on 19 May 2015.