



SPEC® CINT2006 Result

Copyright 2006-2015 Standard Performance Evaluation Corporation

Dell Inc.

SPECint®2006 = 53.2

PowerEdge R930 (Intel Xeon E7-4850 v3, 2.20 GHz)

SPECint_base2006 = 51.2

CPU2006 license: 55

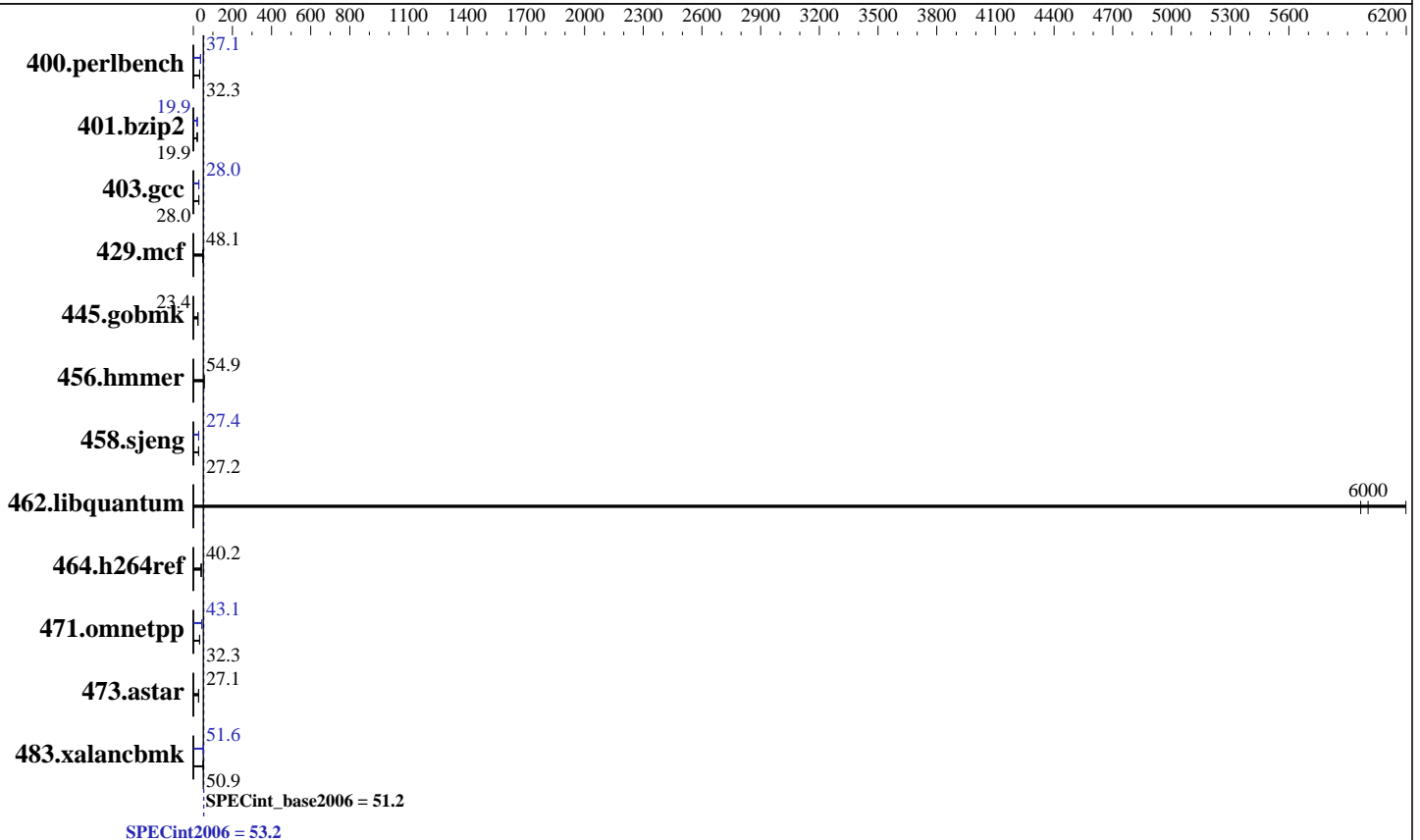
Test date: Apr-2015

Test sponsor: Dell Inc.

Hardware Availability: Jun-2015

Tested by: Dell Inc.

Software Availability: Oct-2014



Hardware

CPU Name: Intel Xeon E7-4850 v3
 CPU Characteristics: Intel Turbo Boost Technology up to 2.80 GHz
 CPU MHz: 2200
 FPU: Integrated
 CPU(s) enabled: 56 cores, 4 chips, 14 cores/chip, 2 threads/core
 CPU(s) orderable: 2,4 chip
 Primary Cache: 32 KB I + 32 KB D on chip per core
 Secondary Cache: 256 KB I+D on chip per core
 L3 Cache: 35 MB I+D on chip per chip
 Other Cache: None
 Memory: 512 GB (32 x 16 GB 2Rx4 PC4-2133P-R, running at 1333 MHz)
 Disk Subsystem: 2 x 200 GB SAS6 SSD, RAID0
 Other Hardware: None

Software

Operating System: SUSE Linux Enterprise Server 12 3.12.28-4-default
 Compiler: C/C++: Version 15.0.0.090 of Intel C++ Studio XE for Linux
 Auto Parallel: Yes
 File System: ext4
 System State: Run level 3 (multi-user)
 Base Pointers: 32/64-bit
 Peak Pointers: 32/64-bit
 Other Software: Microquill SmartHeap V10.0



SPEC CINT2006 Result

Copyright 2006-2015 Standard Performance Evaluation Corporation

Dell Inc.

SPECint2006 = 53.2

PowerEdge R930 (Intel Xeon E7-4850 v3, 2.20 GHz)

SPECint_base2006 = 51.2

CPU2006 license: 55
Test sponsor: Dell Inc.
Tested by: Dell Inc.

Test date: Apr-2015
Hardware Availability: Jun-2015
Software Availability: Oct-2014

Results Table

Benchmark	Base						Peak					
	Seconds	Ratio	Seconds	Ratio	Seconds	Ratio	Seconds	Ratio	Seconds	Ratio	Seconds	Ratio
400.perlbench	<u>302</u>	<u>32.3</u>	301	32.4	304	32.2	263	37.2	<u>263</u>	<u>37.1</u>	265	36.9
401.bzip2	484	19.9	<u>485</u>	<u>19.9</u>	485	19.9	<u>486</u>	<u>19.9</u>	487	19.8	486	19.9
403.gcc	<u>288</u>	<u>28.0</u>	289	27.9	288	28.0	289	27.9	287	28.1	<u>287</u>	<u>28.0</u>
429.mcf	<u>190</u>	<u>48.1</u>	191	47.8	189	48.2	<u>190</u>	<u>48.1</u>	191	47.8	189	48.2
445.gobmk	450	23.3	<u>448</u>	<u>23.4</u>	448	23.4	450	23.3	<u>448</u>	<u>23.4</u>	448	23.4
456.hammer	<u>170</u>	<u>54.9</u>	170	54.9	170	54.8	<u>170</u>	<u>54.9</u>	170	54.9	170	54.8
458.sjeng	444	27.2	444	27.2	<u>444</u>	<u>27.2</u>	<u>442</u>	<u>27.4</u>	442	27.4	442	27.4
462.libquantum	<u>3.45</u>	<u>6000</u>	3.47	5970	3.34	6200	<u>3.45</u>	<u>6000</u>	3.47	5970	3.34	6200
464.h264ref	550	40.2	549	40.3	<u>550</u>	<u>40.2</u>	550	40.2	549	40.3	<u>550</u>	<u>40.2</u>
471.omnetpp	<u>194</u>	<u>32.3</u>	196	31.9	192	32.6	145	43.2	<u>145</u>	<u>43.1</u>	145	43.0
473.astar	257	27.3	260	27.0	<u>259</u>	<u>27.1</u>	257	27.3	260	27.0	<u>259</u>	<u>27.1</u>
483.xalancbmk	133	51.9	137	50.4	<u>135</u>	<u>50.9</u>	134	51.6	134	51.5	<u>134</u>	<u>51.6</u>

Results appear in the order in which they were run. Bold underlined text indicates a median measurement.

Submit Notes

The config file option 'submit' was used.

Operating System Notes

Stack size set to unlimited using "ulimit -s unlimited"

Platform Notes

BIOS Settings:
 Virtualization Technology disabled
 System Profile set to Custom
 CPU Power Management set to Maximum Performance
 Memory Frequency set to Maximum Performance
 Turbo Boost enabled
 Energy Efficient Turbo disabled
 C1E disabled
 C States disabled
 Collaborative CPU Performance Control disabled
 Memory Patrol Scrub disabled
 Memory Refresh Rate set to 1x
 Uncore Frequency set to Maximum
 Energy Efficient Policy set to Performance
 Monitor/MWait enabled

Sysinfo program
 /root/Desktop/Performance/ic15.0_Aug29_2014/config/sysinfo.rev6914
 \$Rev: 6914 \$ \$Date:: 2014-06-25 #\$ e3fbb8667b5a285932ceab81e28219e1
 Continued on next page



SPEC CINT2006 Result

Copyright 2006-2015 Standard Performance Evaluation Corporation

Dell Inc.

SPECint2006 = 53.2

PowerEdge R930 (Intel Xeon E7-4850 v3, 2.20 GHz)

SPECint_base2006 = 51.2

CPU2006 license: 55

Test date: Apr-2015

Test sponsor: Dell Inc.

Hardware Availability: Jun-2015

Tested by: Dell Inc.

Software Availability: Oct-2014

Platform Notes (Continued)

running on linux-luzu Thu Apr 9 07:14:56 2015

This section contains SUT (System Under Test) info as seen by some common utilities. To remove or add to this section, see: <http://www.spec.org/cpu2006/Docs/config.html#sysinfo>

From /proc/cpuinfo

```

model name : Intel(R) Xeon(R) CPU E7-4850 v3 @ 2.20GHz
 4 "physical id"s (chips)
 112 "processors"
cores, siblings (Caution: counting these is hw and system dependent. The
following excerpts from /proc/cpuinfo might not be reliable. Use with
caution.)
  cpu cores : 14
  siblings  : 28
  physical 0: cores 0 1 2 3 4 5 6 8 9 10 11 12 13 14
  physical 1: cores 0 1 2 3 4 5 6 8 9 10 11 12 13 14
  physical 2: cores 0 1 2 3 4 5 6 8 9 10 11 12 13 14
  physical 3: cores 0 1 2 3 4 5 6 8 9 10 11 12 13 14
cache size : 35840 KB

```

From /proc/meminfo

```

MemTotal:      529204236 kB
HugePages_Total:      0
Hugepagesize:    2048 kB

```

/usr/bin/lsb_release -d

SUSE Linux Enterprise Server 12

From /etc/*release* /etc/*version*

```

SuSE-release:
  SUSE Linux Enterprise Server 12 (x86_64)
  VERSION = 12
  PATCHLEVEL = 0
  # This file is deprecated and will be removed in a future service pack or
  # release.
  # Please check /etc/os-release for details about this release.
os-release:
  NAME="SLES"
  VERSION="12"
  VERSION_ID="12"
  PRETTY_NAME="SUSE Linux Enterprise Server 12"
  ID="sles"
  ANSI_COLOR="0;32"
  CPE_NAME="cpe:/o:suse:sles:12"

```

uname -a:

Linux linux-luzu 3.12.28-4-default #1 SMP Thu Sep 25 17:02:34 UTC 2014 (9879bd4) x86_64 x86_64 x86_64 GNU/Linux

run-level 3 Apr 7 15:01 last=5

Continued on next page



SPEC CINT2006 Result

Copyright 2006-2015 Standard Performance Evaluation Corporation

Dell Inc.

SPECint2006 = 53.2

PowerEdge R930 (Intel Xeon E7-4850 v3, 2.20 GHz)

SPECint_base2006 = 51.2

CPU2006 license: 55

Test date: Apr-2015

Test sponsor: Dell Inc.

Hardware Availability: Jun-2015

Tested by: Dell Inc.

Software Availability: Oct-2014

Platform Notes (Continued)

SPEC is set to: /root/Desktop/Performance/ic15.0_Aug29_2014

Filesystem	Type	Size	Used	Avail	Use%	Mounted on
/dev/sda3	ext4	325G	21G	304G	7%	/home

Additional information from dmidecode:

Warning: Use caution when you interpret this section. The 'dmidecode' program reads system data which is "intended to allow hardware to be accurately determined", but the intent may not be met, as there are frequent changes to hardware, firmware, and the "DMTF SMBIOS" standard.

BIOS Dell Inc. 1.0.1 [MRC_096] 03/27/2015

Memory:

32x 00AD00B300AD Not Specified 16 GB 2 rank 2133 MHz, configured at 1333 MHz
64x Not Specified Not Specified

(End of data from sysinfo program)

General Notes

Environment variables set by runspec before the start of the run:

KMP_AFFINITY = "granularity=fine,scatter"

LD_LIBRARY_PATH = "/root/Desktop/Performance/ic15.0_Aug29_2014/libs/32:/root/Desktop/Performance/ic15.0_Aug29_2014/libs/64:/root/Desktop/Performance/ic15.0_Aug29_2014/sh"

OMP_NUM_THREADS = "56"

Binaries compiled on a system with 1x Core i5-4670K CPU + 16GB memory using RedHat EL 7.0

Transparent Huge Pages enabled with:

echo always > /sys/kernel/mm/transparent_hugepage/enabled

Base Compiler Invocation

C benchmarks:

icc -m64

C++ benchmarks:

icpc -m64

Base Portability Flags

400.perlbench: -DSPEC_CPU_LP64 -DSPEC_CPU_LINUX_X64

401.bzip2: -DSPEC_CPU_LP64

403.gcc: -DSPEC_CPU_LP64

429.mcf: -DSPEC_CPU_LP64

445.gobmk: -DSPEC_CPU_LP64

456.hmmer: -DSPEC_CPU_LP64

458.sjeng: -DSPEC_CPU_LP64

Continued on next page

Standard Performance Evaluation Corporation

info@spec.org

http://www.spec.org/



SPEC CINT2006 Result

Copyright 2006-2015 Standard Performance Evaluation Corporation

Dell Inc.

SPECint2006 = 53.2

PowerEdge R930 (Intel Xeon E7-4850 v3, 2.20 GHz)

SPECint_base2006 = 51.2

CPU2006 license: 55

Test date: Apr-2015

Test sponsor: Dell Inc.

Hardware Availability: Jun-2015

Tested by: Dell Inc.

Software Availability: Oct-2014

Base Portability Flags (Continued)

462.libquantum: -DSPEC_CPU_LP64 -DSPEC_CPU_LINUX
464.h264ref: -DSPEC_CPU_LP64
471.omnetpp: -DSPEC_CPU_LP64
473.astar: -DSPEC_CPU_LP64
483.xalancbmk: -DSPEC_CPU_LP64 -DSPEC_CPU_LINUX

Base Optimization Flags

C benchmarks:

-xCORE-AVX2 -ipo -O3 -no-prec-div -parallel -opt-prefetch -auto-p32

C++ benchmarks:

-xCORE-AVX2 -ipo -O3 -no-prec-div -opt-prefetch -auto-p32
-Wl,-z,muldefs -L/sh -lsmartheap64

Base Other Flags

C benchmarks:

403.gcc: -Dalloca=_alloca

Peak Compiler Invocation

C benchmarks (except as noted below):

icc -m64

400.perlbench: icc -m32 -L/opt/intel/composer_xe_2015/lib/ia32

C++ benchmarks (except as noted below):

icpc -m32 -L/opt/intel/composer_xe_2015/lib/ia32

473.astar: icpc -m64

Peak Portability Flags

400.perlbench: -DSPEC_CPU_LINUX_IA32
401.bzip2: -DSPEC_CPU_LP64
403.gcc: -DSPEC_CPU_LP64
429.mcf: -DSPEC_CPU_LP64
445.gobmk: -DSPEC_CPU_LP64
456.hammer: -DSPEC_CPU_LP64

Continued on next page



SPEC CINT2006 Result

Copyright 2006-2015 Standard Performance Evaluation Corporation

Dell Inc.

SPECint2006 = 53.2

PowerEdge R930 (Intel Xeon E7-4850 v3, 2.20 GHz)

SPECint_base2006 = 51.2

CPU2006 license: 55

Test date: Apr-2015

Test sponsor: Dell Inc.

Hardware Availability: Jun-2015

Tested by: Dell Inc.

Software Availability: Oct-2014

Peak Portability Flags (Continued)

458.sjeng: -DSPEC_CPU_LP64
 462.libquantum: -DSPEC_CPU_LP64 -DSPEC_CPU_LINUX
 464.h264ref: -DSPEC_CPU_LP64
 473.astar: -DSPEC_CPU_LP64
 483.xalancbmk: -DSPEC_CPU_LINUX

Peak Optimization Flags

C benchmarks:

400.perlbench: -xCORE-AVX2(pass 2) -prof-gen(pass 1) -ipo(pass 2)
 -O3(pass 2) -no-prec-div(pass 2) -prof-use(pass 2)
 -opt-prefetch -ansi-alias

401.bzip2: -xCORE-AVX2(pass 2) -prof-gen(pass 1) -ipo(pass 2)
 -O3(pass 2) -no-prec-div -prof-use(pass 2) -auto-ilp32
 -opt-prefetch -ansi-alias

403.gcc: -xCORE-AVX2 -ipo -O3 -no-prec-div -inline-calloc
 -opt-malloc-options=3 -auto-ilp32

429.mcf: basepeak = yes

445.gobmk: basepeak = yes

456.hmmer: basepeak = yes

458.sjeng: -xCORE-AVX2(pass 2) -prof-gen(pass 1) -ipo(pass 2)
 -O3(pass 2) -no-prec-div(pass 2) -prof-use(pass 2)
 -unroll4

462.libquantum: basepeak = yes

464.h264ref: basepeak = yes

C++ benchmarks:

471.omnetpp: -xCORE-AVX2(pass 2) -prof-gen(pass 1) -ipo(pass 2)
 -O3(pass 2) -no-prec-div(pass 2) -prof-use(pass 2)
 -opt-ra-region-strategy=block -ansi-alias
 -Wl,-z,muldefs -L/sh -lsmarheap

473.astar: basepeak = yes

483.xalancbmk: -xCORE-AVX2 -ipo -O3 -no-prec-div -opt-prefetch
 -ansi-alias -Wl,-z,muldefs -L/sh -lsmarheap



SPEC CINT2006 Result

Copyright 2006-2015 Standard Performance Evaluation Corporation

Dell Inc.

SPECint2006 = 53.2

PowerEdge R930 (Intel Xeon E7-4850 v3, 2.20 GHz)

SPECint_base2006 = 51.2

CPU2006 license: 55

Test date: Apr-2015

Test sponsor: Dell Inc.

Hardware Availability: Jun-2015

Tested by: Dell Inc.

Software Availability: Oct-2014

Peak Other Flags

C benchmarks:

403.gcc: -Dalloca=_alloca

The flags files that were used to format this result can be browsed at

<http://www.spec.org/cpu2006/flags/Intel-ic15.0-official-linux64.html>

<http://www.spec.org/cpu2006/flags/Dell-Platform-Settings-V1.2-revE.20150421.html>

You can also download the XML flags sources by saving the following links:

<http://www.spec.org/cpu2006/flags/Intel-ic15.0-official-linux64.xml>

<http://www.spec.org/cpu2006/flags/Dell-Platform-Settings-V1.2-revE.20150421.xml>

SPEC and SPECint are registered trademarks of the Standard Performance Evaluation Corporation. All other brand and product names appearing in this result are trademarks or registered trademarks of their respective holders.

For questions about this result, please contact the tester.
For other inquiries, please contact webmaster@spec.org.

Tested with SPEC CPU2006 v1.2.
Report generated on Tue May 5 15:15:06 2015 by SPEC CPU2006 PS/PDF formatter v6932.
Originally published on 5 May 2015.