



# SPEC® CFP2006 Result

Copyright 2006-2015 Standard Performance Evaluation Corporation

Dell Inc.

SPECfp®2006 = 111

PowerEdge FC430 (Intel Xeon E5-2640 v3, 2.60 GHz)

SPECfp\_base2006 = 106

CPU2006 license: 55

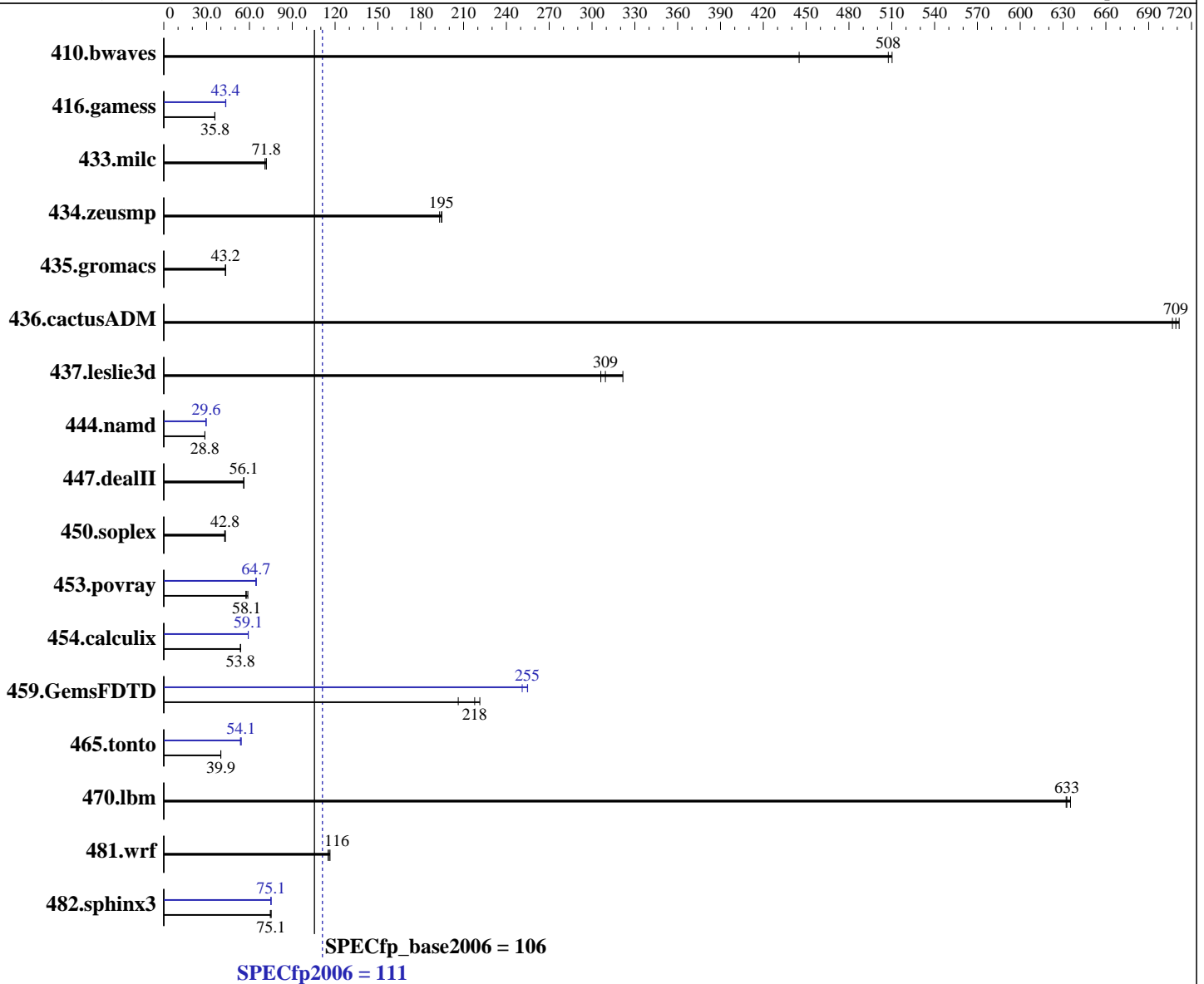
Test date: Jan-2015

Test sponsor: Dell Inc.

Hardware Availability: Apr-2015

Tested by: Dell Inc.

Software Availability: Apr-2015



## Hardware

CPU Name: Intel Xeon E5-2640 v3  
 CPU Characteristics: Intel Turbo Boost Technology up to 3.40 GHz  
 CPU MHz: 2600  
 FPU: Integrated  
 CPU(s) enabled: 16 cores, 2 chips, 8 cores/chip, 2 threads/core  
 CPU(s) orderable: 1,2 chip  
 Primary Cache: 32 KB I + 32 KB D on chip per core  
 Secondary Cache: 256 KB I+D on chip per core

Continued on next page

## Software

Operating System: SUSE Linux Enterprise Server 12  
 3.12.28-4-default  
 Compiler: C/C++: Version 15.0.0.090 of Intel C++ Studio XE for Linux;  
 Fortran: Version 15.0.0.090 of Intel Fortran Studio XE for Linux  
 Auto Parallel: Yes  
 File System: ext4  
 System State: Run level 3 (multi-user)

Continued on next page



# SPEC CFP2006 Result

Copyright 2006-2015 Standard Performance Evaluation Corporation

Dell Inc.

SPECfp2006 = 111

PowerEdge FC430 (Intel Xeon E5-2640 v3, 2.60 GHz)

SPECfp\_base2006 = 106

CPU2006 license: 55

Test date: Jan-2015

Test sponsor: Dell Inc.

Hardware Availability: Apr-2015

Tested by: Dell Inc.

Software Availability: Apr-2015

L3 Cache: 20 MB I+D on chip per chip  
Other Cache: None  
Memory: 128 GB (8 x 16 GB 2Rx4 PC4-2133P-R, running at 1866 MHz)  
Disk Subsystem: 1 x 200 GB SSD SATA  
Other Hardware: None

Base Pointers: 64-bit  
Peak Pointers: 32/64-bit  
Other Software: None

## Results Table

Benchmark	Base						Peak					
	Seconds	Ratio	Seconds	Ratio	Seconds	Ratio	Seconds	Ratio	Seconds	Ratio	Seconds	Ratio
410.bwaves	30.5	445	26.6	510	<b>26.8</b>	<b>508</b>	30.5	445	26.6	510	<b>26.8</b>	<b>508</b>
416.gamess	<b>547</b>	<b>35.8</b>	546	35.8	549	35.7	452	43.3	450	43.5	<b>452</b>	<b>43.4</b>
433.milc	130	70.9	<b>128</b>	<b>71.8</b>	128	71.9	130	70.9	<b>128</b>	<b>71.8</b>	128	71.9
434.zeusmp	47.1	193	<b>46.8</b>	<b>195</b>	46.7	195	47.1	193	<b>46.8</b>	<b>195</b>	46.7	195
435.gromacs	165	43.2	165	43.3	<b>165</b>	<b>43.2</b>	165	43.2	165	43.3	<b>165</b>	<b>43.2</b>
436.cactusADM	16.8	711	16.9	707	<b>16.9</b>	<b>709</b>	16.8	711	16.9	707	<b>16.9</b>	<b>709</b>
437.leslie3d	29.2	322	30.7	306	<b>30.4</b>	<b>309</b>	29.2	322	30.7	306	<b>30.4</b>	<b>309</b>
444.namd	278	28.8	<b>278</b>	<b>28.8</b>	279	28.8	271	29.6	271	29.6	<b>271</b>	<b>29.6</b>
447.dealII	205	55.9	<b>204</b>	<b>56.1</b>	204	56.2	205	55.9	<b>204</b>	<b>56.1</b>	204	56.2
450.soplex	<b>195</b>	<b>42.8</b>	193	43.2	196	42.6	<b>195</b>	<b>42.8</b>	193	43.2	196	42.6
453.povray	92.6	57.5	<b>91.6</b>	<b>58.1</b>	90.3	58.9	82.4	64.6	<b>82.2</b>	<b>64.7</b>	82.2	64.8
454.calculix	153	53.8	<b>153</b>	<b>53.8</b>	154	53.7	139	59.2	<b>139</b>	<b>59.1</b>	139	59.1
459.GemsFDTD	<b>48.7</b>	<b>218</b>	47.9	221	51.4	206	41.6	255	42.3	251	<b>41.7</b>	<b>255</b>
465.tonto	246	40.0	<b>246</b>	<b>39.9</b>	247	39.9	<b>182</b>	<b>54.1</b>	181	54.2	183	53.7
470.lbm	<b>21.7</b>	<b>633</b>	21.7	632	21.6	635	<b>21.7</b>	<b>633</b>	21.7	632	21.6	635
481.wrf	95.9	116	97.0	115	<b>96.4</b>	<b>116</b>	95.9	116	97.0	115	<b>96.4</b>	<b>116</b>
482.sphinx3	259	75.1	<b>259</b>	<b>75.1</b>	261	74.6	<b>259</b>	<b>75.1</b>	260	75.0	259	75.1

Results appear in the order in which they were run. Bold underlined text indicates a median measurement.

## Operating System Notes

Stack size set to unlimited using "ulimit -s unlimited"

## Platform Notes

BIOS settings:  
Snoop Mode set to Home Snoop  
Virtualization Technology disabled  
System Profile set to Custom  
Sysinfo program /root/cpu2006-1.2/config/sysinfo.rev6914  
\$Rev: 6914 \$ \$Date:: 2014-06-25 #\$ e3fbb8667b5a285932ceab81e28219e1  
running on linux-lwpl Wed Jan 21 19:24:21 2015

This section contains SUT (System Under Test) info as seen by

Continued on next page



# SPEC CFP2006 Result

Copyright 2006-2015 Standard Performance Evaluation Corporation

Dell Inc.

SPECfp2006 = 111

PowerEdge FC430 (Intel Xeon E5-2640 v3, 2.60 GHz)

SPECfp\_base2006 = 106

CPU2006 license: 55

Test date: Jan-2015

Test sponsor: Dell Inc.

Hardware Availability: Apr-2015

Tested by: Dell Inc.

Software Availability: Apr-2015

## Platform Notes (Continued)

some common utilities. To remove or add to this section, see:  
<http://www.spec.org/cpu2006/Docs/config.html#sysinfo>

```

From /proc/cpuinfo
model name : Intel(R) Xeon(R) CPU E5-2640 v3 @ 2.60GHz
 2 "physical id"s (chips)
 32 "processors"
cores, siblings (Caution: counting these is hw and system dependent. The
following excerpts from /proc/cpuinfo might not be reliable. Use with
caution.)
  cpu cores : 8
  siblings  : 16
  physical 0: cores 0 1 2 3 4 5 6 7
  physical 1: cores 0 1 2 3 4 5 6 7
cache size : 20480 KB

```

```

From /proc/meminfo
MemTotal:      132187004 kB
HugePages_Total:    0
Hugepagesize:    2048 kB

```

```

/usr/bin/lsb_release -d
SUSE Linux Enterprise Server 12

```

```

From /etc/*release* /etc/*version*
SuSE-release:
SUSE Linux Enterprise Server 12 (x86_64)
VERSION = 12
PATCHLEVEL = 0
# This file is deprecated and will be removed in a future service pack or
release.
# Please check /etc/os-release for details about this release.
os-release:
NAME="SLES"
VERSION="12"
VERSION_ID="12"
PRETTY_NAME="SUSE Linux Enterprise Server 12"
ID="sles"
ANSI_COLOR="0;32"
CPE_NAME="cpe:/o:suse:sles:12"

```

```

uname -a:
Linux linux-lwp1 3.12.28-4-default #1 SMP Thu Sep 25 17:02:34 UTC 2014
(9879bd4) x86_64 x86_64 x86_64 GNU/Linux

```

run-level 3 Jan 21 13:59

```

SPEC is set to: /root/cpu2006-1.2
Filesystem      Type  Size  Used Avail Use% Mounted on
/dev/sda2       ext4 176G  11G 165G   6% /
Additional information from dmidecode:

```

Continued on next page



# SPEC CFP2006 Result

Copyright 2006-2015 Standard Performance Evaluation Corporation

Dell Inc.

SPECfp2006 = 111

PowerEdge FC430 (Intel Xeon E5-2640 v3, 2.60 GHz)

SPECfp\_base2006 = 106

CPU2006 license: 55

Test date: Jan-2015

Test sponsor: Dell Inc.

Hardware Availability: Apr-2015

Tested by: Dell Inc.

Software Availability: Apr-2015

## Platform Notes (Continued)

Warning: Use caution when you interpret this section. The 'dmidecode' program reads system data which is "intended to allow hardware to be accurately determined", but the intent may not be met, as there are frequent changes to hardware, firmware, and the "DMTF SMBIOS" standard.

BIOS Dell Inc. 0.4.0 01/08/2015

Memory:

8x 00CE00B300CE M393A2G40DB0-CPB 16 GB 2 rank 2133 MHz, configured at 1867 MHz

(End of data from sysinfo program)

## General Notes

Environment variables set by runspec before the start of the run:

KMP\_AFFINITY = "granularity=fine,compact,1,0"

LD\_LIBRARY\_PATH = "/root/cpu2006-1.2/libs/32:/root/cpu2006-1.2/libs/64:/root/cpu2006-1.2/sh"

OMP\_NUM\_THREADS = "16"

Binaries compiled on a system with 1x Core i5-4670K CPU + 16GB memory using RedHat EL 7.0

Transparent Huge Pages enabled with:

echo always > /sys/kernel/mm/transparent\_hugepage/enabled

## Base Compiler Invocation

C benchmarks:

icc -m64

C++ benchmarks:

icpc -m64

Fortran benchmarks:

ifort -m64

Benchmarks using both Fortran and C:

icc -m64 ifort -m64

## Base Portability Flags

410.bwaves: -DSPEC\_CPU\_LP64

416.gamess: -DSPEC\_CPU\_LP64

433.milc: -DSPEC\_CPU\_LP64

434.zeusmp: -DSPEC\_CPU\_LP64

435.gromacs: -DSPEC\_CPU\_LP64 -nofor\_main

436.cactusADM: -DSPEC\_CPU\_LP64 -nofor\_main

Continued on next page

Standard Performance Evaluation Corporation

info@spec.org

http://www.spec.org/

Page 4



# SPEC CFP2006 Result

Copyright 2006-2015 Standard Performance Evaluation Corporation

Dell Inc.

SPECfp2006 = 111

PowerEdge FC430 (Intel Xeon E5-2640 v3, 2.60 GHz)

SPECfp\_base2006 = 106

CPU2006 license: 55

Test date: Jan-2015

Test sponsor: Dell Inc.

Hardware Availability: Apr-2015

Tested by: Dell Inc.

Software Availability: Apr-2015

## Base Portability Flags (Continued)

```

437.leslie3d: -DSPEC_CPU_LP64
444.namd: -DSPEC_CPU_LP64
447.deall: -DSPEC_CPU_LP64
450.soplex: -DSPEC_CPU_LP64
453.povray: -DSPEC_CPU_LP64
454.calculix: -DSPEC_CPU_LP64 -nofor_main
459.GemsFDTD: -DSPEC_CPU_LP64
465.tonto: -DSPEC_CPU_LP64
470.lbm: -DSPEC_CPU_LP64
481.wrf: -DSPEC_CPU_LP64 -DSPEC_CPU_CASE_FLAG -DSPEC_CPU_LINUX
482.sphinx3: -DSPEC_CPU_LP64

```

## Base Optimization Flags

C benchmarks:

```

-xCORE-AVX2 -ipo -O3 -no-prec-div -parallel -opt-prefetch
-ansi-alias

```

C++ benchmarks:

```

-xCORE-AVX2 -ipo -O3 -no-prec-div -opt-prefetch -ansi-alias

```

Fortran benchmarks:

```

-xCORE-AVX2 -ipo -O3 -no-prec-div -parallel -opt-prefetch

```

Benchmarks using both Fortran and C:

```

-xCORE-AVX2 -ipo -O3 -no-prec-div -parallel -opt-prefetch
-ansi-alias

```

## Peak Compiler Invocation

C benchmarks:

```

icc -m64

```

C++ benchmarks:

```

icpc -m64

```

Fortran benchmarks:

```

ifort -m64

```

Benchmarks using both Fortran and C:

```

icc -m64 ifort -m64

```



# SPEC CFP2006 Result

Copyright 2006-2015 Standard Performance Evaluation Corporation

Dell Inc.

SPECfp2006 = 111

PowerEdge FC430 (Intel Xeon E5-2640 v3, 2.60 GHz)

SPECfp\_base2006 = 106

CPU2006 license: 55

Test date: Jan-2015

Test sponsor: Dell Inc.

Hardware Availability: Apr-2015

Tested by: Dell Inc.

Software Availability: Apr-2015

## Peak Portability Flags

Same as Base Portability Flags

## Peak Optimization Flags

C benchmarks:

433.milc: basepeak = yes

470.lbm: basepeak = yes

482.sphinx3: -xCORE-AVX2 -ipo -O3 -no-prec-div -unroll2 -ansi-alias  
-parallel

C++ benchmarks:

444.namd: -xCORE-AVX2(pass 2) -prof-gen(pass 1) -ipo(pass 2)  
-O3(pass 2) -no-prec-div(pass 2) -prof-use(pass 2)  
-fno-alias -auto-ilp32

447.dealIII: basepeak = yes

450.soplex: basepeak = yes

453.povray: -xCORE-AVX2(pass 2) -prof-gen(pass 1) -ipo(pass 2)  
-O3(pass 2) -no-prec-div(pass 2) -prof-use(pass 2) -unroll4  
-ansi-alias

Fortran benchmarks:

410.bwaves: basepeak = yes

416.gamess: -xCORE-AVX2(pass 2) -prof-gen(pass 1) -ipo(pass 2)  
-O3(pass 2) -no-prec-div(pass 2) -prof-use(pass 2) -unroll2  
-inline-level=0 -scalar-rep-

434.zeusmp: basepeak = yes

437.leslie3d: basepeak = yes

459.GemsFDTD: -xCORE-AVX2(pass 2) -prof-gen(pass 1) -ipo(pass 2)  
-O3(pass 2) -no-prec-div(pass 2) -prof-use(pass 2) -unroll2  
-inline-level=0 -opt-prefetch -parallel

465.tonto: -xCORE-AVX2(pass 2) -prof-gen(pass 1) -ipo(pass 2)  
-O3(pass 2) -no-prec-div(pass 2) -prof-use(pass 2)  
-inline-calloc -opt-malloc-options=3 -auto -unroll4

Continued on next page



# SPEC CFP2006 Result

Copyright 2006-2015 Standard Performance Evaluation Corporation

Dell Inc.

SPECfp2006 = 111

PowerEdge FC430 (Intel Xeon E5-2640 v3, 2.60 GHz)

SPECfp\_base2006 = 106

CPU2006 license: 55

Test date: Jan-2015

Test sponsor: Dell Inc.

Hardware Availability: Apr-2015

Tested by: Dell Inc.

Software Availability: Apr-2015

## Peak Optimization Flags (Continued)

Benchmarks using both Fortran and C:

435.gromacs: basepeak = yes

436.cactusADM: basepeak = yes

454.calculix: -xCORE-AVX2 -ipo -O3 -no-prec-div -auto-ilp32 -ansi-alias

481.wrf: basepeak = yes

The flags files that were used to format this result can be browsed at

<http://www.spec.org/cpu2006/flags/Intel-ic15.0-official-linux64.html>

<http://www.spec.org/cpu2006/flags/Dell-Platform-Settings-V1.2-revD.html>

You can also download the XML flags sources by saving the following links:

<http://www.spec.org/cpu2006/flags/Intel-ic15.0-official-linux64.xml>

<http://www.spec.org/cpu2006/flags/Dell-Platform-Settings-V1.2-revD.xml>

SPEC and SPECfp are registered trademarks of the Standard Performance Evaluation Corporation. All other brand and product names appearing in this result are trademarks or registered trademarks of their respective holders.

For questions about this result, please contact the tester.  
For other inquiries, please contact [webmaster@spec.org](mailto:webmaster@spec.org).

Tested with SPEC CPU2006 v1.2.

Report generated on Thu Apr 16 15:39:13 2015 by SPEC CPU2006 PS/PDF formatter v6932.

Originally published on 16 April 2015.