



SPEC® CINT2006 Result

Copyright 2006-2015 Standard Performance Evaluation Corporation

Fujitsu

SPECint®2006 = 61.6

PRIMERGY RX2540 M1, Intel Xeon E5-2695 v3, 2.3 GHz

SPECint_base2006 = 58.9

CPU2006 license: 19

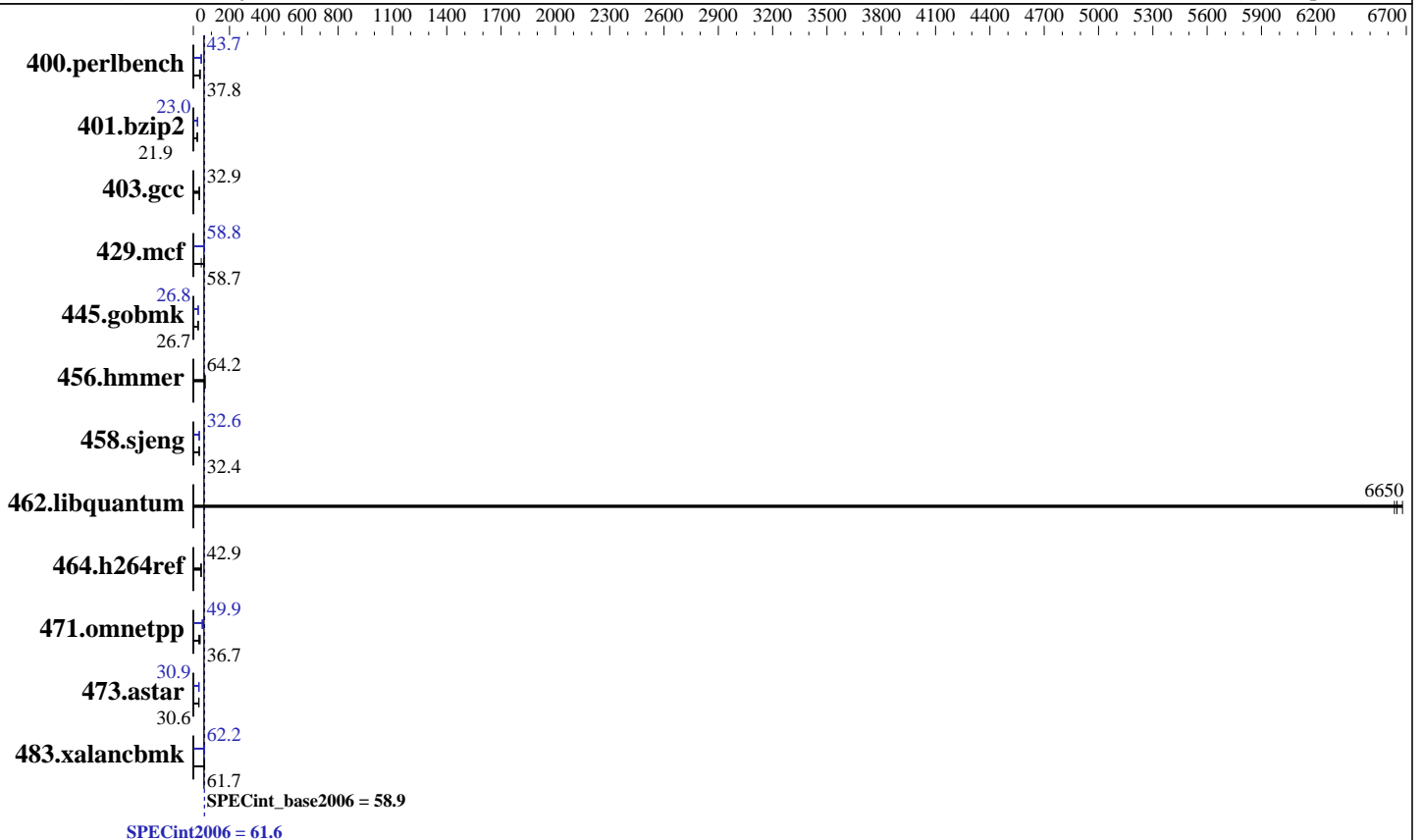
Test sponsor: Fujitsu

Tested by: Fujitsu

Test date: Nov-2014

Hardware Availability: Sep-2014

Software Availability: Sep-2014



Hardware

CPU Name: Intel Xeon E5-2695 v3
 CPU Characteristics: Intel Turbo Boost Technology up to 3.30 GHz
 CPU MHz: 2300
 FPU: Integrated
 CPU(s) enabled: 28 cores, 2 chips, 14 cores/chip, 2 threads/core
 CPU(s) orderable: 1,2 chip
 Primary Cache: 32 KB I + 32 KB D on chip per core
 Secondary Cache: 256 KB I+D on chip per core
 L3 Cache: 35 MB I+D on chip per chip
 Other Cache: None
 Memory: 256 GB (16 x 16 GB 2Rx4 PC4-2133P-R)
 Disk Subsystem: 1 x SATA, 500 GB, 7200 RPM
 Other Hardware: None

Software

Operating System: Red Hat Enterprise Linux Server release 7.0 (Maipo)
 Kernel 3.10.0-123.8.1.el7.x86_64
 Compiler: C/C++: Version 15.0.0.090 of Intel C++ Studio XE for Linux
 Auto Parallel: Yes
 File System: xfs
 System State: Run level 3 (multi-user)
 Base Pointers: 32/64-bit
 Peak Pointers: 32/64-bit
 Other Software: Microquill SmartHeap V10.0



SPEC CINT2006 Result

Copyright 2006-2015 Standard Performance Evaluation Corporation

Fujitsu

SPECint2006 = **61.6**

PRIMERGY RX2540 M1, Intel Xeon E5-2695 v3, 2.3 GHz

SPECint_base2006 = **58.9**

CPU2006 license: 19
Test sponsor: Fujitsu
Tested by: Fujitsu

Test date: Nov-2014
Hardware Availability: Sep-2014
Software Availability: Sep-2014

Results Table

Benchmark	Base						Peak					
	Seconds	Ratio	Seconds	Ratio	Seconds	Ratio	Seconds	Ratio	Seconds	Ratio	Seconds	Ratio
400.perlbench	258	37.8	<u>259</u>	<u>37.8</u>	285	34.3	224	43.7	224	43.6	<u>224</u>	<u>43.7</u>
401.bzip2	<u>440</u>	<u>21.9</u>	426	22.7	458	21.1	419	23.0	<u>419</u>	<u>23.0</u>	419	23.0
403.gcc	<u>245</u>	<u>32.9</u>	244	33.0	245	32.8	<u>245</u>	<u>32.9</u>	244	33.0	245	32.8
429.mcf	154	59.2	208	43.9	<u>155</u>	<u>58.7</u>	156	58.5	<u>155</u>	<u>58.8</u>	154	59.1
445.gobmk	394	26.6	<u>393</u>	<u>26.7</u>	392	26.8	<u>391</u>	<u>26.8</u>	391	26.8	391	26.8
456.hammer	<u>145</u>	<u>64.2</u>	146	64.0	145	64.4	<u>145</u>	<u>64.2</u>	146	64.0	145	64.4
458.sjeng	373	32.4	373	32.4	<u>373</u>	<u>32.4</u>	371	32.6	<u>371</u>	<u>32.6</u>	371	32.6
462.libquantum	<u>3.12</u>	<u>6650</u>	3.10	6680	3.12	6630	<u>3.12</u>	<u>6650</u>	3.10	6680	3.12	6630
464.h264ref	517	42.8	516	42.9	<u>516</u>	<u>42.9</u>	517	42.8	516	42.9	<u>516</u>	<u>42.9</u>
471.omnetpp	212	29.4	169	36.9	<u>170</u>	<u>36.7</u>	125	50.0	125	49.8	<u>125</u>	<u>49.9</u>
473.astar	233	30.1	<u>229</u>	<u>30.6</u>	228	30.8	228	30.7	226	31.1	<u>228</u>	<u>30.9</u>
483.xalancbmk	112	61.5	112	61.8	<u>112</u>	<u>61.7</u>	<u>111</u>	<u>62.2</u>	111	62.4	111	62.1

Results appear in the order in which they were run. Bold underlined text indicates a median measurement.

Submit Notes

The config file option 'submit' was used.

Operating System Notes

Stack size set to unlimited using "ulimit -s unlimited"

Platform Notes

BIOS configuration:
Energy Performance = Performance
Utilization Profile = Unbalanced
QPI snoop mode: Home Snoop
COD Enable = Disabled, Early Snoop = Disabled
CPU C1E Support = Disabled

General Notes

Environment variables set by runspec before the start of the run:
KMP_AFFINITY = "granularity=fine,scatter"
LD_LIBRARY_PATH = "/home/SPECcpu2006/libs/32:/home/SPECcpu2006/libs/64:/home/SPECcpu2006/sh"
OMP_NUM_THREADS = "28"

Binaries compiled on a system with 1x Core i5-4670K CPU + 16GB memory using RedHat EL 7.0

For information about Fujitsu please visit: <http://www.fujitsu.com>



SPEC CINT2006 Result

Copyright 2006-2015 Standard Performance Evaluation Corporation

Fujitsu

SPECint2006 = 61.6

PRIMERGY RX2540 M1, Intel Xeon E5-2695 v3, 2.3 GHz

SPECint_base2006 = 58.9

CPU2006 license: 19
Test sponsor: Fujitsu
Tested by: Fujitsu

Test date: Nov-2014
Hardware Availability: Sep-2014
Software Availability: Sep-2014

Base Compiler Invocation

C benchmarks:
icc -m64

C++ benchmarks:
icpc -m64

Base Portability Flags

400.perlbench: -DSPEC_CPU_LP64 -DSPEC_CPU_LINUX_X64
401.bzip2: -DSPEC_CPU_LP64
403.gcc: -DSPEC_CPU_LP64
429.mcf: -DSPEC_CPU_LP64
445.gobmk: -DSPEC_CPU_LP64
456.hmmer: -DSPEC_CPU_LP64
458.sjeng: -DSPEC_CPU_LP64
462.libquantum: -DSPEC_CPU_LP64 -DSPEC_CPU_LINUX
464.h264ref: -DSPEC_CPU_LP64
471.omnetpp: -DSPEC_CPU_LP64
473.astar: -DSPEC_CPU_LP64
483.xalancbmk: -DSPEC_CPU_LP64 -DSPEC_CPU_LINUX

Base Optimization Flags

C benchmarks:
-xCORE-AVX2 -ipo -O3 -no-prec-div -parallel -opt-prefetch -auto-p32

C++ benchmarks:
-xCORE-AVX2 -ipo -O3 -no-prec-div -opt-prefetch -auto-p32
-Wl,-z,muldefs -L/sh -lsmartheap64

Base Other Flags

C benchmarks:
403.gcc: -Dalloca=_alloca

Peak Compiler Invocation

C benchmarks (except as noted below):
icc -m64

Continued on next page



SPEC CINT2006 Result

Copyright 2006-2015 Standard Performance Evaluation Corporation

Fujitsu

SPECint2006 = 61.6

PRIMERGY RX2540 M1, Intel Xeon E5-2695 v3, 2.3 GHz

SPECint_base2006 = 58.9

CPU2006 license: 19

Test sponsor: Fujitsu

Tested by: Fujitsu

Test date: Nov-2014

Hardware Availability: Sep-2014

Software Availability: Sep-2014

Peak Compiler Invocation (Continued)

400.perlbench: `icc -m32 -L/opt/intel/composer_xe_2015/lib/ia32`

445.gobmk: `icc -m32 -L/opt/intel/composer_xe_2015/lib/ia32`

C++ benchmarks (except as noted below):

`icpc -m32 -L/opt/intel/composer_xe_2015/lib/ia32`

473.astar: `icpc -m64`

Peak Portability Flags

400.perlbench: `-DSPEC_CPU_LINUX_IA32`

401.bzip2: `-DSPEC_CPU_LP64`

403.gcc: `-DSPEC_CPU_LP64`

429.mcf: `-DSPEC_CPU_LP64`

456.hmmmer: `-DSPEC_CPU_LP64`

458.sjeng: `-DSPEC_CPU_LP64`

462.libquantum: `-DSPEC_CPU_LP64 -DSPEC_CPU_LINUX`

464.h264ref: `-DSPEC_CPU_LP64`

473.astar: `-DSPEC_CPU_LP64`

483.xalancbmk: `-DSPEC_CPU_LINUX`

Peak Optimization Flags

C benchmarks:

400.perlbench: `-xCORE-AVX2(pass 2) -prof-gen(pass 1) -ipo(pass 2) -O3(pass 2) -no-prec-div(pass 2) -prof-use(pass 2) -opt-prefetch -ansi-alias`

401.bzip2: `-xCORE-AVX2(pass 2) -prof-gen(pass 1) -ipo(pass 2) -O3(pass 2) -no-prec-div -prof-use(pass 2) -auto-ilp32 -opt-prefetch -ansi-alias`

403.gcc: `basepeak = yes`

429.mcf: `-xCORE-AVX2 -ipo -O3 -no-prec-div -parallel -opt-prefetch -auto-p32`

445.gobmk: `-xCORE-AVX2(pass 2) -prof-gen(pass 1) -prof-use(pass 2) -ansi-alias`

456.hmmmer: `basepeak = yes`

458.sjeng: `-xCORE-AVX2(pass 2) -prof-gen(pass 1) -ipo(pass 2) -O3(pass 2) -no-prec-div(pass 2) -prof-use(pass 2) -unroll4`

Continued on next page



SPEC CINT2006 Result

Copyright 2006-2015 Standard Performance Evaluation Corporation

Fujitsu

SPECint2006 = 61.6

PRIMERGY RX2540 M1, Intel Xeon E5-2695 v3, 2.3 GHz

SPECint_base2006 = 58.9

CPU2006 license: 19

Test date: Nov-2014

Test sponsor: Fujitsu

Hardware Availability: Sep-2014

Tested by: Fujitsu

Software Availability: Sep-2014

Peak Optimization Flags (Continued)

462.libquantum: basepeak = yes

464.h264ref: basepeak = yes

C++ benchmarks:

471.omnetpp: -xCORE-AVX2(pass 2) -prof-gen(pass 1) -ipo(pass 2)
-O3(pass 2) -no-prec-div(pass 2) -prof-use(pass 2)
-opt-ra-region-strategy=block -ansi-alias
-Wl,-z,muldefs -L/sh -lsmarheap

473.astar: -xCORE-AVX2 -ipo -O3 -no-prec-div -opt-prefetch
-auto-p32 -Wl,-z,muldefs -L/sh -lsmarheap64

483.xalancbmk: -xCORE-AVX2 -ipo -O3 -no-prec-div -opt-prefetch
-ansi-alias -Wl,-z,muldefs -L/sh -lsmarheap

Peak Other Flags

C benchmarks:

403.gcc: -Dalloca=_alloca

The flags files that were used to format this result can be browsed at

<http://www.spec.org/cpu2006/flags/Intel-ic15.0-official-linux64.html>

<http://www.spec.org/cpu2006/flags/Fujitsu-Platform-Settings-V1.2-HSW-RevA.html>

You can also download the XML flags sources by saving the following links:

<http://www.spec.org/cpu2006/flags/Intel-ic15.0-official-linux64.xml>

<http://www.spec.org/cpu2006/flags/Fujitsu-Platform-Settings-V1.2-HSW-RevA.xml>

SPEC and SPECint are registered trademarks of the Standard Performance Evaluation Corporation. All other brand and product names appearing in this result are trademarks or registered trademarks of their respective holders.

For questions about this result, please contact the tester.
For other inquiries, please contact webmaster@spec.org.

Tested with SPEC CPU2006 v1.2.

Report generated on Wed Jan 14 10:26:24 2015 by SPEC CPU2006 PS/PDF formatter v6932.

Originally published on 13 January 2015.