



SPEC® CFP2006 Result

Copyright 2006-2014 Standard Performance Evaluation Corporation

IBM Corporation

IBM System x3750 M4
(Intel Xeon E5-4610, 2.40 GHz)

SPECfp®2006 = 71.1

SPECfp_base2006 = 67.0

CPU2006 license: 11

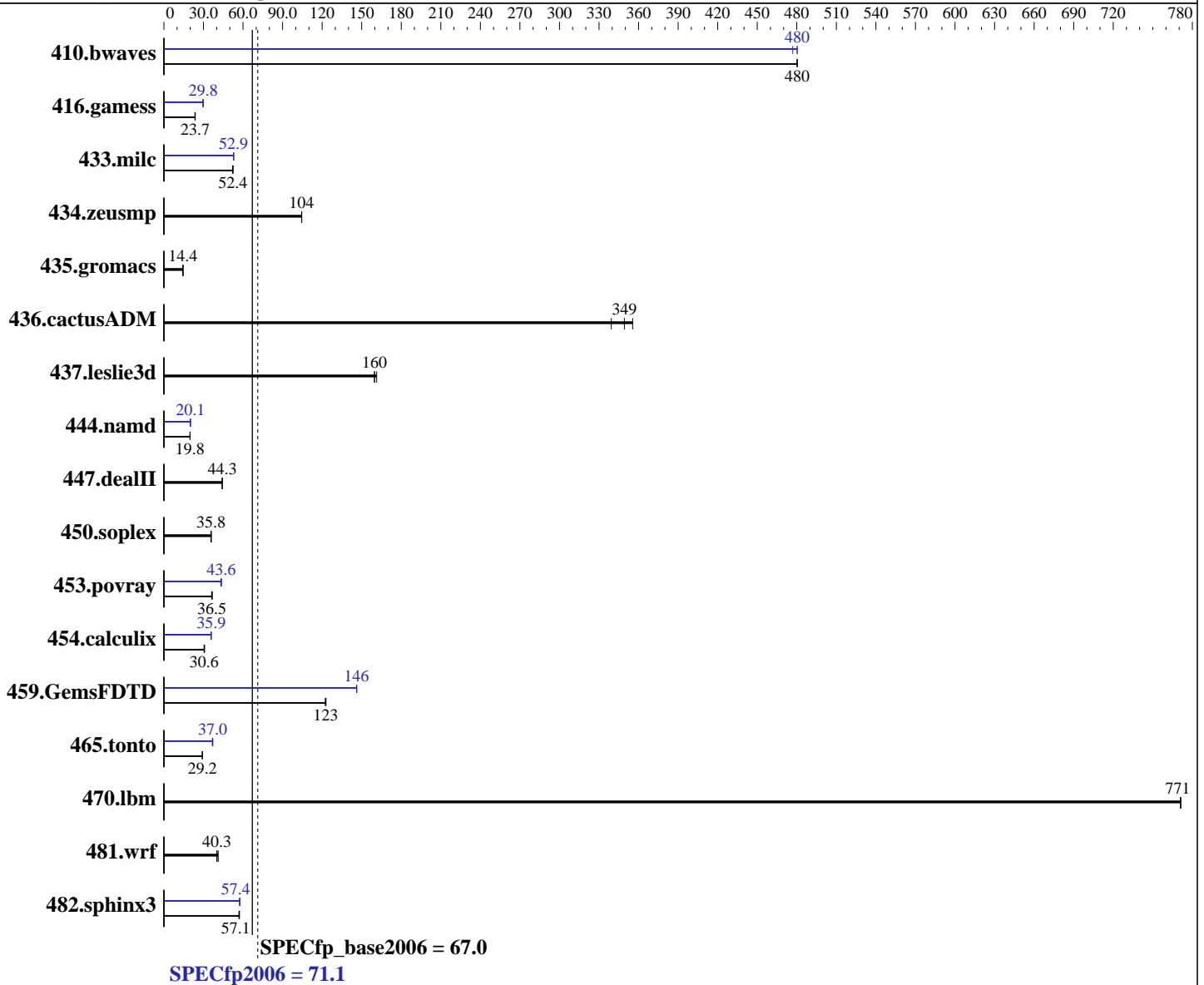
Test sponsor: IBM Corporation

Tested by: IBM Corporation

Test date: Jul-2012

Hardware Availability: Jul-2012

Software Availability: Dec-2011



Hardware

CPU Name: Intel Xeon E5-4610
 CPU Characteristics: Intel Turbo Boost Technology up to 2.90 GHz
 CPU MHz: 2400
 FPU: Integrated
 CPU(s) enabled: 24 cores, 4 chips, 6 cores/chip, 2 threads/core
 CPU(s) orderable: 1,2,3,4 chips
 Primary Cache: 32 KB I + 32 KB D on chip per core
 Secondary Cache: 256 KB I+D on chip per core

Continued on next page

Software

Operating System: Red Hat Enterprise Linux Server release 6.2 (Santiago)
 2.6.32-220.el6.x86_64
 Compiler: C/C++: Version 12.1.0.225 of Intel C++ Studio XE for Linux;
 Fortran: Version 12.1.0.225 of Intel Fortran Studio XE for Linux
 Auto Parallel: Yes
 File System: ext4

Continued on next page



SPEC CFP2006 Result

Copyright 2006-2014 Standard Performance Evaluation Corporation

IBM Corporation

IBM System x3750 M4
(Intel Xeon E5-4610, 2.40 GHz)

SPECfp2006 = **71.1**

SPECfp_base2006 = **67.0**

CPU2006 license: 11

Test sponsor: IBM Corporation

Tested by: IBM Corporation

Test date: Jul-2012

Hardware Availability: Jul-2012

Software Availability: Dec-2011

L3 Cache: 15 MB I+D on chip per chip
Other Cache: None
Memory: 256 GB (32 x 8 GB 2Rx4 PC3-12800R-11, ECC, running at 1333 MHz)
Disk Subsystem: 1 x 300 GB SAS, 10000 RPM
Other Hardware: None

System State: Run level 3 (multi-user)
Base Pointers: 64-bit
Peak Pointers: 32/64-bit
Other Software: None

Results Table

Benchmark	Base						Peak					
	Seconds	Ratio	Seconds	Ratio	Seconds	Ratio	Seconds	Ratio	Seconds	Ratio	Seconds	Ratio
410.bwaves	28.3	480	28.3	480	28.3	480	28.3	480	28.5	477	28.3	480
416.gamess	824	23.8	826	23.7	832	23.5	662	29.6	655	29.9	657	29.8
433.milc	175	52.4	176	52.0	175	52.4	174	52.9	174	52.9	174	52.9
434.zeusmp	87.1	104	87.1	104	87.1	104	87.1	104	87.1	104	87.1	104
435.gromacs	492	14.5	496	14.4	494	14.4	492	14.5	496	14.4	494	14.4
436.cactusADM	33.6	356	34.2	349	35.2	339	33.6	356	34.2	349	35.2	339
437.leslie3d	58.9	160	58.9	160	58.3	161	58.9	160	58.9	160	58.3	161
444.namd	405	19.8	405	19.8	405	19.8	400	20.1	398	20.2	399	20.1
447.dealII	258	44.3	258	44.3	259	44.2	258	44.3	258	44.3	259	44.2
450.soplex	233	35.8	233	35.8	232	35.9	233	35.8	233	35.8	232	35.9
453.povray	145	36.7	147	36.2	146	36.5	122	43.6	122	43.6	123	43.1
454.calculix	271	30.4	267	30.9	270	30.6	231	35.7	230	35.9	230	35.9
459.GemsFDTD	86.7	122	86.5	123	86.3	123	72.6	146	72.6	146	72.6	146
465.tonto	337	29.2	338	29.1	337	29.2	268	36.6	266	37.0	265	37.1
470.lbm	17.8	771	17.8	771	17.8	771	17.8	771	17.8	771	17.8	771
481.wrf	277	40.3	271	41.2	278	40.2	277	40.3	271	41.2	278	40.2
482.sphinx3	342	57.1	342	56.9	340	57.3	338	57.6	340	57.4	340	57.4

Results appear in the order in which they were run. Bold underlined text indicates a median measurement.

Operating System Notes

Stack size set to unlimited using "ulimit -s unlimited"

Platform Notes

Operating Mode set to Maximum Performance in BIOS
Sysinfo program /cpu2006.1.2/config/sysinfo.rev6800
\$Rev: 6800 \$ \$Date:: 2011-10-11 #\$ 6f2ebdff5032aaa42e583f96b07f99d3
running on kong-pete Fri Jul 13 22:44:42 2012

This section contains SUT (System Under Test) info as seen by some common utilities. To remove or add to this section, see:
<http://www.spec.org/cpu2006/Docs/config.html#sysinfo>

Continued on next page



SPEC CFP2006 Result

Copyright 2006-2014 Standard Performance Evaluation Corporation

IBM Corporation

SPECfp2006 = 71.1

IBM System x3750 M4
(Intel Xeon E5-4610, 2.40 GHz)

SPECfp_base2006 = 67.0

CPU2006 license: 11

Test date: Jul-2012

Test sponsor: IBM Corporation

Hardware Availability: Jul-2012

Tested by: IBM Corporation

Software Availability: Dec-2011

Platform Notes (Continued)

```

From /proc/cpuinfo
  model name : Intel(R) Xeon(R) CPU E5-4610 0 @ 2.40GHz
    4 "physical id"s (chips)
    48 "processors"
cores, siblings (Caution: counting these is hw and system dependent. The
following excerpts from /proc/cpuinfo might not be reliable. Use with
caution.)
  cpu cores : 6
  siblings  : 12
  physical 0: cores 0 1 2 3 4 5
  physical 1: cores 0 1 2 3 4 5
  physical 2: cores 0 1 2 3 4 5
  physical 3: cores 0 1 2 3 4 5
cache size : 15360 KB

From /proc/meminfo
MemTotal:      264507224 kB
HugePages_Total:      0
Hugepagesize:    2048 kB

/usr/bin/lsb_release -d
  Red Hat Enterprise Linux Server release 6.2 (Santiago)

From /etc/*release* /etc/*version*
redhat-release: Red Hat Enterprise Linux Server release 6.2 (Santiago)
system-release: Red Hat Enterprise Linux Server release 6.2 (Santiago)
system-release-cpe: cpe:/o:redhat:enterprise_linux:6server:ga:server

uname -a:
  Linux kong-pete 2.6.32-220.el6.x86_64 #1 SMP Wed Nov 9 08:03:13 EST 2011
  x86_64 x86_64 x86_64 GNU/Linux

run-level 3 Jul 13 15:00

SPEC is set to: /cpu2006.1.2
  Filesystem      Type      Size  Used Avail Use% Mounted on
  /dev/mapper/vg_kongpete-lv_root
    ext4          264G    6.0G  245G   3% /

Additional information from dmidecode:
Memory:
  11x Hynix HMT31GR7CFR4C-PB 8 GB 1600 MHz 2 rank
  15x Micron 36JSF1G72PZ-1G6M1 8 GB 1600 MHz 2 rank
  6x Samsung M393B1K70DH0-CK0 8 GB 1600 MHz 2 rank

(End of data from sysinfo program)

```



SPEC CFP2006 Result

Copyright 2006-2014 Standard Performance Evaluation Corporation

IBM Corporation

SPECfp2006 = 71.1

IBM System x3750 M4
(Intel Xeon E5-4610, 2.40 GHz)

SPECfp_base2006 = 67.0

CPU2006 license: 11

Test date: Jul-2012

Test sponsor: IBM Corporation

Hardware Availability: Jul-2012

Tested by: IBM Corporation

Software Availability: Dec-2011

General Notes

Environment variables set by runspec before the start of the run:

```
KMP_AFFINITY = "granularity=fine,compact,1,0"
LD_LIBRARY_PATH = "/cpu2006.1.2/libs/32:/cpu2006.1.2/libs/64"
OMP_NUM_THREADS = "24"
```

Binaries compiled on a system with 1x Core i7-860 CPU + 8GB memory using RHEL5.5

Transparent Huge Pages disabled with:

```
echo never > /sys/kernel/mm/redhat_transparent_hugepage/enabled
```

Filesystem page cache cleared with:

```
echo 1> /proc/sys/vm/drop_caches
```

Base Compiler Invocation

C benchmarks:

```
icc -m64
```

C++ benchmarks:

```
icpc -m64
```

Fortran benchmarks:

```
ifort -m64
```

Benchmarks using both Fortran and C:

```
icc -m64 ifort -m64
```

Base Portability Flags

```
410.bwaves: -DSPEC_CPU_LP64
416.gamess: -DSPEC_CPU_LP64
433.milc: -DSPEC_CPU_LP64
434.zeusmp: -DSPEC_CPU_LP64
435.gromacs: -DSPEC_CPU_LP64 -nofor_main
436.cactusADM: -DSPEC_CPU_LP64 -nofor_main
437.leslie3d: -DSPEC_CPU_LP64
444.namd: -DSPEC_CPU_LP64
447.deallI: -DSPEC_CPU_LP64
450.soplex: -DSPEC_CPU_LP64
453.povray: -DSPEC_CPU_LP64
454.calculix: -DSPEC_CPU_LP64 -nofor_main
459.GemsFDTD: -DSPEC_CPU_LP64
465.tonto: -DSPEC_CPU_LP64
470.lbm: -DSPEC_CPU_LP64
481.wrf: -DSPEC_CPU_LP64 -DSPEC_CPU_CASE_FLAG -DSPEC_CPU_LINUX
482.sphinx3: -DSPEC_CPU_LP64
```



SPEC CFP2006 Result

Copyright 2006-2014 Standard Performance Evaluation Corporation

IBM Corporation

IBM System x3750 M4
(Intel Xeon E5-4610, 2.40 GHz)

SPECfp2006 = 71.1

SPECfp_base2006 = 67.0

CPU2006 license: 11

Test sponsor: IBM Corporation

Tested by: IBM Corporation

Test date: Jul-2012

Hardware Availability: Jul-2012

Software Availability: Dec-2011

Base Optimization Flags

C benchmarks:

`-xAVX -ipo -O3 -no-prec-div -static -parallel -opt-prefetch
-ansi-alias`

C++ benchmarks:

`-xAVX -ipo -O3 -no-prec-div -static -opt-prefetch -ansi-alias`

Fortran benchmarks:

`-xAVX -ipo -O3 -no-prec-div -static -parallel -opt-prefetch`

Benchmarks using both Fortran and C:

`-xAVX -ipo -O3 -no-prec-div -static -parallel -opt-prefetch
-ansi-alias`

Peak Compiler Invocation

C benchmarks:

`icc -m64`

C++ benchmarks:

`icpc -m64`

Fortran benchmarks:

`ifort -m64`

Benchmarks using both Fortran and C:

`icc -m64 ifort -m64`

Peak Portability Flags

Same as Base Portability Flags

Peak Optimization Flags

C benchmarks:

`433.milc: -xAVX(pass 2) -prof-gen(pass 1) -ipo(pass 2) -O3(pass 2)
-no-prec-div(pass 2) -prof-use(pass 2) -static -auto-ilp32
-ansi-alias`

`470.lbm: basepeak = yes`

`482.sphinx3: -xAVX -ipo -O3 -no-prec-div -unroll2 -ansi-alias
-parallel`

Continued on next page



SPEC CFP2006 Result

Copyright 2006-2014 Standard Performance Evaluation Corporation

IBM Corporation

IBM System x3750 M4
(Intel Xeon E5-4610, 2.40 GHz)

SPECfp2006 = 71.1

SPECfp_base2006 = 67.0

CPU2006 license: 11

Test sponsor: IBM Corporation

Tested by: IBM Corporation

Test date: Jul-2012

Hardware Availability: Jul-2012

Software Availability: Dec-2011

Peak Optimization Flags (Continued)

C++ benchmarks:

444.namd: -xAVX(pass 2) -prof-gen(pass 1) -ipo(pass 2) -O3(pass 2)
-no-prec-div(pass 2) -prof-use(pass 2) -fno-alias
-auto-ilp32

447.dealII: basepeak = yes

450.soplex: basepeak = yes

453.povray: -xAVX(pass 2) -prof-gen(pass 1) -ipo(pass 2) -O3(pass 2)
-no-prec-div(pass 2) -prof-use(pass 2) -unroll4 -ansi-alias

Fortran benchmarks:

410.bwaves: -xAVX -ipo -O3 -no-prec-div -opt-prefetch -parallel
-static

416.gamess: -xAVX(pass 2) -prof-gen(pass 1) -ipo(pass 2) -O3(pass 2)
-no-prec-div(pass 2) -prof-use(pass 2) -unroll2
-inline-level=0 -scalar-rep- -static

434.zeusmp: basepeak = yes

437.leslie3d: basepeak = yes

459.GemsFDTD: -xAVX(pass 2) -prof-gen(pass 1) -ipo(pass 2) -O3(pass 2)
-no-prec-div(pass 2) -prof-use(pass 2) -unroll2
-inline-level=0 -opt-prefetch -parallel

465.tonto: -xAVX(pass 2) -prof-gen(pass 1) -ipo(pass 2) -O3(pass 2)
-no-prec-div(pass 2) -prof-use(pass 2) -inline-calloc
-opt-malloc-options=3 -auto -unroll4

Benchmarks using both Fortran and C:

435.gromacs: basepeak = yes

436.cactusADM: basepeak = yes

454.calculix: -xAVX -ipo -O3 -no-prec-div -auto-ilp32 -ansi-alias

481.wrf: basepeak = yes

The flags files that were used to format this result can be browsed at

<http://www.spec.org/cpu2006/flags/Intel-ic12.1-official-linux64.20120425.html>

<http://www.spec.org/cpu2006/flags/IBM-Platform-Flags-V1.2-SNB-C.html>



SPEC CFP2006 Result

Copyright 2006-2014 Standard Performance Evaluation Corporation

IBM Corporation

IBM System x3750 M4
(Intel Xeon E5-4610, 2.40 GHz)

SPECfp2006 = 71.1

SPECfp_base2006 = 67.0

CPU2006 license: 11
Test sponsor: IBM Corporation
Tested by: IBM Corporation

Test date: Jul-2012
Hardware Availability: Jul-2012
Software Availability: Dec-2011

You can also download the XML flags sources by saving the following links:

<http://www.spec.org/cpu2006/flags/Intel-ic12.1-official-linux64.20120425.xml>
<http://www.spec.org/cpu2006/flags/IBM-Platform-Flags-V1.2-SNB-C.xml>

SPEC and SPECfp are registered trademarks of the Standard Performance Evaluation Corporation. All other brand and product names appearing in this result are trademarks or registered trademarks of their respective holders.

For questions about this result, please contact the tester.
For other inquiries, please contact webmaster@spec.org.

Tested with SPEC CPU2006 v1.2.
Report generated on Mon Sep 15 15:43:04 2014 by SPEC CPU2006 PS/PDF formatter v6932.
Originally published on 31 July 2012.