



SPEC[®] CFP2006 Result

Copyright 2006-2014 Standard Performance Evaluation Corporation

Dell Inc.

SPECfp[®]2006 = 85.7

PowerEdge T620 (Intel Xeon E5-2667, 2.90 GHz)

SPECfp_base2006 = 81.4

CPU2006 license: 55

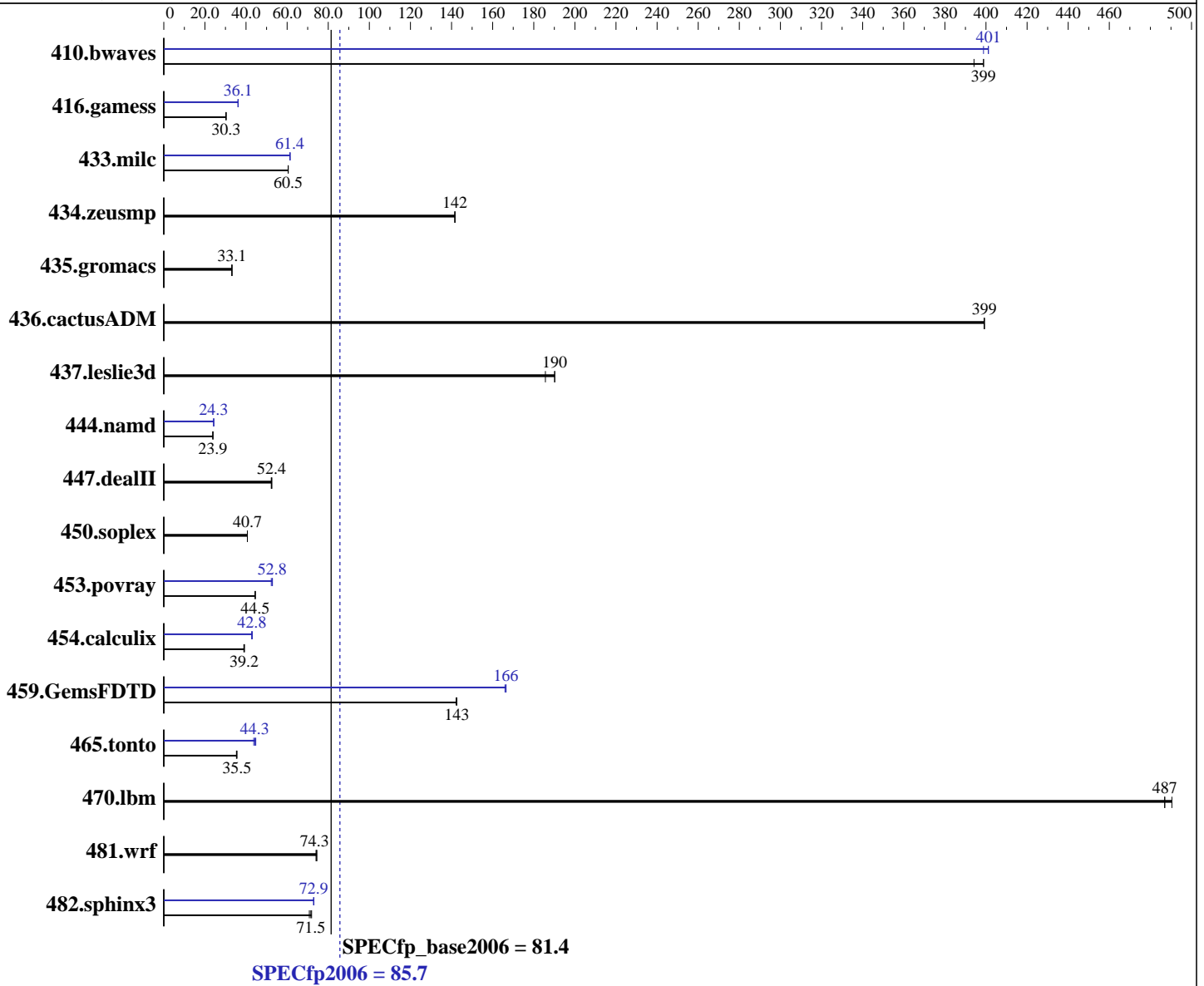
Test date: Feb-2012

Test sponsor: Dell Inc.

Hardware Availability: Mar-2012

Tested by: Dell Inc.

Software Availability: Feb-2012



Hardware

CPU Name: Intel Xeon E5-2667
 CPU Characteristics: Intel Turbo Boost Technology up to 3.50 GHz
 CPU MHz: 2900
 FPU: Integrated
 CPU(s) enabled: 12 cores, 2 chips, 6 cores/chip, 2 threads/core
 CPU(s) orderable: 1,2 chip
 Primary Cache: 32 KB I + 32 KB D on chip per core
 Secondary Cache: 256 KB I+D on chip per core

Continued on next page

Software

Operating System: SUSE Linux Enterprise Server 11 SP2 (x86_64) 3.0.13-0.9-default
 Compiler: C/C++: Version 12.1.0.225 of Intel C++ Studio XE for Linux;
 Fortran: Version 12.1.0.225 of Intel Fortran Studio XE for Linux
 Auto Parallel: Yes
 File System: ext3
 System State: Run level 3 (multi-user)

Continued on next page



SPEC CFP2006 Result

Copyright 2006-2014 Standard Performance Evaluation Corporation

Dell Inc.

SPECfp2006 = 85.7

PowerEdge T620 (Intel Xeon E5-2667, 2.90 GHz)

SPECfp_base2006 = 81.4

CPU2006 license: 55

Test date: Feb-2012

Test sponsor: Dell Inc.

Hardware Availability: Mar-2012

Tested by: Dell Inc.

Software Availability: Feb-2012

L3 Cache: 15 MB I+D on chip per chip
 Other Cache: None
 Memory: 128 GB (16 x 8 GB 2Rx4 PC3-12800R-11, ECC)
 Disk Subsystem: 1 x 500 GB 7200 RPM SATA
 Other Hardware: None

Base Pointers: 64-bit
 Peak Pointers: 32/64-bit
 Other Software: None

Results Table

Benchmark	Base						Peak					
	Seconds	Ratio	Seconds	Ratio	Seconds	Ratio	Seconds	Ratio	Seconds	Ratio	Seconds	Ratio
410.bwaves	34.5	394	34.1	399	<u>34.1</u>	<u>399</u>	<u>33.9</u>	<u>401</u>	34.1	399	33.9	401
416.gamess	<u>646</u>	<u>30.3</u>	647	30.3	646	30.3	542	36.1	541	36.2	<u>542</u>	<u>36.1</u>
433.milc	152	60.5	152	60.5	<u>152</u>	<u>60.5</u>	149	61.4	<u>150</u>	<u>61.4</u>	150	61.4
434.zeusmp	<u>64.3</u>	<u>142</u>	64.3	142	64.3	142	<u>64.3</u>	<u>142</u>	64.3	142	64.3	142
435.gromacs	216	33.1	<u>216</u>	<u>33.1</u>	215	33.2	216	33.1	<u>216</u>	<u>33.1</u>	215	33.2
436.cactusADM	29.9	399	29.9	399	<u>29.9</u>	<u>399</u>	29.9	399	29.9	399	<u>29.9</u>	<u>399</u>
437.leslie3d	<u>49.4</u>	<u>190</u>	49.4	190	50.6	186	<u>49.4</u>	<u>190</u>	49.4	190	50.6	186
444.namd	336	23.9	<u>336</u>	<u>23.9</u>	336	23.9	330	24.3	<u>330</u>	<u>24.3</u>	330	24.3
447.dealII	<u>218</u>	<u>52.4</u>	218	52.6	219	52.3	<u>218</u>	<u>52.4</u>	218	52.6	219	52.3
450.soplex	205	40.7	<u>205</u>	<u>40.7</u>	205	40.7	205	40.7	<u>205</u>	<u>40.7</u>	205	40.7
453.povray	<u>120</u>	<u>44.5</u>	120	44.4	120	44.5	101	52.9	<u>101</u>	<u>52.8</u>	102	52.3
454.calculix	212	38.9	<u>211</u>	<u>39.2</u>	210	39.2	192	43.1	<u>193</u>	<u>42.8</u>	193	42.8
459.GemsFDTD	74.6	142	<u>74.4</u>	<u>143</u>	74.4	143	<u>63.7</u>	<u>166</u>	63.9	166	63.7	166
465.tonto	279	35.3	277	35.6	<u>277</u>	<u>35.5</u>	<u>222</u>	<u>44.3</u>	220	44.8	225	43.7
470.lbm	<u>28.2</u>	<u>487</u>	28.2	487	28.0	490	<u>28.2</u>	<u>487</u>	28.2	487	28.0	490
481.wrf	150	74.4	151	74.1	<u>150</u>	<u>74.3</u>	150	74.4	151	74.1	<u>150</u>	<u>74.3</u>
482.sphinx3	271	71.9	<u>272</u>	<u>71.5</u>	275	70.8	267	72.9	267	73.0	<u>267</u>	<u>72.9</u>

Results appear in the order in which they were run. Bold underlined text indicates a median measurement.

Operating System Notes

Stack size set to unlimited using "ulimit -s unlimited"

Platform Notes

System Profile set to Custom
 CPU Power Management set to Maximum Performance
 Memory Frequency set to Maximum Performance
 Turbo Boost set to Enabled
 C States/C1E set to Enabled
 Sysinfo program /root/CPU2006-1.2/config/sysinfo.rev6800
 \$Rev: 6800 \$ \$Date:: 2011-10-11 #\$ 6f2ebdff5032aaa42e583f96b07f99d3
 running on Miller Thu Feb 9 21:09:36 2012

This section contains SUT (System Under Test) info as seen by
Continued on next page



SPEC CFP2006 Result

Copyright 2006-2014 Standard Performance Evaluation Corporation

Dell Inc.

SPECfp2006 = 85.7

PowerEdge T620 (Intel Xeon E5-2667, 2.90 GHz)

SPECfp_base2006 = 81.4

CPU2006 license: 55

Test date: Feb-2012

Test sponsor: Dell Inc.

Hardware Availability: Mar-2012

Tested by: Dell Inc.

Software Availability: Feb-2012

Platform Notes (Continued)

some common utilities. To remove or add to this section, see:
<http://www.spec.org/cpu2006/Docs/config.html#sysinfo>

```

From /proc/cpuinfo
  model name : Intel(R) Xeon(R) CPU E5-2667 0 @ 2.90GHz
  2 "physical id"s (chips)
  24 "processors"
  cores, siblings (Caution: counting these is hw and system dependent. The
  following excerpts from /proc/cpuinfo might not be reliable. Use with
  caution.)
    cpu cores : 6
    siblings  : 12
    physical 0: cores 0 1 2 3 4 5
    physical 1: cores 0 1 2 3 4 5
  cache size : 15360 KB

```

```

From /proc/meminfo
MemTotal:      132122692 kB
HugePages_Total:    0
Hugepagesize:    2048 kB

```

```

/usr/bin/lsb_release -d
SUSE Linux Enterprise Server 11 (x86_64)

```

```

From /etc/*release* /etc/*version*
SuSE-release:
SUSE Linux Enterprise Server 11 (x86_64)
VERSION = 11
PATCHLEVEL = 2

```

```

uname -a:
Linux Miller 3.0.13-0.9-default #1 SMP Mon Jan 16 17:33:03 UTC 2012 (54ddfaf)
x86_64 x86_64 x86_64 GNU/Linux

```

run-level 3 Feb 9 15:12 last=S

```

SPEC is set to: /root/CPU2006-1.2
Filesystem      Type  Size  Used Avail Use% Mounted on
/dev/sdal       ext3  99G   9.9G   84G  11% /

```

Additional information from dmidecode:

(End of data from sysinfo program)

General Notes

Environment variables set by runspec before the start of the run:

```

KMP_AFFINITY = "granularity=fine,scatter"
LD_LIBRARY_PATH = "/root/CPU2006-1.2/libs/32:/root/CPU2006-1.2/libs/64"
OMP_NUM_THREADS = "12"

```

The Dell PowerEdge T620 and

Continued on next page



SPEC CFP2006 Result

Copyright 2006-2014 Standard Performance Evaluation Corporation

Dell Inc.

SPECfp2006 = 85.7

PowerEdge T620 (Intel Xeon E5-2667, 2.90 GHz)

SPECfp_base2006 = 81.4

CPU2006 license: 55

Test date: Feb-2012

Test sponsor: Dell Inc.

Hardware Availability: Mar-2012

Tested by: Dell Inc.

Software Availability: Feb-2012

General Notes (Continued)

the Bull NovaScale T840 F3 models are electronically equivalent.

The results have been measured on a Dell PowerEdge T620 model

Transparent Huge Pages disabled with:

```
echo never > /sys/kernel/mm/transparent_hugepage/enabled
```

Filesystem page cache cleared with:

```
echo 1> /proc/sys/vm/drop_caches
```

Binaries compiled on a system with 1x Core i7-860 CPU + 8GB memory using RHEL5.5

Base Compiler Invocation

C benchmarks:

```
icc -m64
```

C++ benchmarks:

```
icpc -m64
```

Fortran benchmarks:

```
ifort -m64
```

Benchmarks using both Fortran and C:

```
icc -m64 ifort -m64
```

Base Portability Flags

```

410.bwaves: -DSPEC_CPU_LP64
416.gamess: -DSPEC_CPU_LP64
433.milc: -DSPEC_CPU_LP64
434.zeusmp: -DSPEC_CPU_LP64
435.gromacs: -DSPEC_CPU_LP64 -nofor_main
436.cactusADM: -DSPEC_CPU_LP64 -nofor_main
437.leslie3d: -DSPEC_CPU_LP64
444.namd: -DSPEC_CPU_LP64
447.dealII: -DSPEC_CPU_LP64
450.soplex: -DSPEC_CPU_LP64
453.povray: -DSPEC_CPU_LP64
454.calculix: -DSPEC_CPU_LP64 -nofor_main
459.GemsFDTD: -DSPEC_CPU_LP64
465.tonto: -DSPEC_CPU_LP64
470.lbm: -DSPEC_CPU_LP64
481.wrf: -DSPEC_CPU_LP64 -DSPEC_CPU_CASE_FLAG -DSPEC_CPU_LINUX
482.sphinx3: -DSPEC_CPU_LP64

```

Base Optimization Flags

C benchmarks:

```
-xAVX -ipo -O3 -no-prec-div -static -parallel -opt-prefetch
-ansi-alias
```

Continued on next page

Standard Performance Evaluation Corporation

info@spec.org

http://www.spec.org/

Page 4



SPEC CFP2006 Result

Copyright 2006-2014 Standard Performance Evaluation Corporation

Dell Inc.

SPECfp2006 = 85.7

PowerEdge T620 (Intel Xeon E5-2667, 2.90 GHz)

SPECfp_base2006 = 81.4

CPU2006 license: 55

Test date: Feb-2012

Test sponsor: Dell Inc.

Hardware Availability: Mar-2012

Tested by: Dell Inc.

Software Availability: Feb-2012

Base Optimization Flags (Continued)

C++ benchmarks:

-xAVX -ipo -O3 -no-prec-div -static -opt-prefetch -ansi-alias

Fortran benchmarks:

-xAVX -ipo -O3 -no-prec-div -static -parallel -opt-prefetch

Benchmarks using both Fortran and C:

-xAVX -ipo -O3 -no-prec-div -static -parallel -opt-prefetch
-ansi-alias

Peak Compiler Invocation

C benchmarks:

icc -m64

C++ benchmarks:

icpc -m64

Fortran benchmarks:

ifort -m64

Benchmarks using both Fortran and C:

icc -m64 ifort -m64

Peak Portability Flags

Same as Base Portability Flags

Peak Optimization Flags

C benchmarks:

433.milc: -xAVX(pass 2) -prof-gen(pass 1) -ipo(pass 2) -O3(pass 2)
-no-prec-div(pass 2) -prof-use(pass 2) -static -auto-ilp32
-ansi-alias

470.lbm: basepeak = yes

482.sphinx3: -xAVX -ipo -O3 -no-prec-div -unroll2 -ansi-alias
-parallel

Continued on next page



SPEC CFP2006 Result

Copyright 2006-2014 Standard Performance Evaluation Corporation

Dell Inc.

SPECfp2006 = 85.7

PowerEdge T620 (Intel Xeon E5-2667, 2.90 GHz)

SPECfp_base2006 = 81.4

CPU2006 license: 55

Test date: Feb-2012

Test sponsor: Dell Inc.

Hardware Availability: Mar-2012

Tested by: Dell Inc.

Software Availability: Feb-2012

Peak Optimization Flags (Continued)

C++ benchmarks:

444.namd: -xAVX(pass 2) -prof-gen(pass 1) -ipo(pass 2) -O3(pass 2)
-no-prec-div(pass 2) -prof-use(pass 2) -fno-alias
-auto-ilp32

447.dealII: basepeak = yes

450.soplex: basepeak = yes

453.povray: -xAVX(pass 2) -prof-gen(pass 1) -ipo(pass 2) -O3(pass 2)
-no-prec-div(pass 2) -prof-use(pass 2) -unroll4 -ansi-alias

Fortran benchmarks:

410.bwaves: -xAVX -ipo -O3 -no-prec-div -opt-prefetch -parallel
-static

416.gamess: -xAVX(pass 2) -prof-gen(pass 1) -ipo(pass 2) -O3(pass 2)
-no-prec-div(pass 2) -prof-use(pass 2) -unroll2
-inline-level=0 -scalar-rep- -static

434.zeusmp: basepeak = yes

437.leslie3d: basepeak = yes

459.GemsFDTD: -xAVX(pass 2) -prof-gen(pass 1) -ipo(pass 2) -O3(pass 2)
-no-prec-div(pass 2) -prof-use(pass 2) -unroll2
-inline-level=0 -opt-prefetch -parallel

465.tonto: -xAVX(pass 2) -prof-gen(pass 1) -ipo(pass 2) -O3(pass 2)
-no-prec-div(pass 2) -prof-use(pass 2) -inline-calloc
-opt-malloc-options=3 -auto -unroll4

Benchmarks using both Fortran and C:

435.gromacs: basepeak = yes

436.cactusADM: basepeak = yes

454.calculix: -xAVX -ipo -O3 -no-prec-div -auto-ilp32 -ansi-alias

481.wrf: basepeak = yes

The flags files that were used to format this result can be browsed at

<http://www.spec.org/cpu2006/flags/Intel-ic12.1-official-linux64.20111122.html>

<http://www.spec.org/cpu2006/flags/Dell-Platform-Settings-V1.2-revA.20120328.html>



SPEC CFP2006 Result

Copyright 2006-2014 Standard Performance Evaluation Corporation

Dell Inc.

SPECfp2006 = 85.7

PowerEdge T620 (Intel Xeon E5-2667, 2.90 GHz)

SPECfp_base2006 = 81.4

CPU2006 license: 55

Test date: Feb-2012

Test sponsor: Dell Inc.

Hardware Availability: Mar-2012

Tested by: Dell Inc.

Software Availability: Feb-2012

You can also download the XML flags sources by saving the following links:

<http://www.spec.org/cpu2006/flags/Intel-ic12.1-official-linux64.20111122.xml>

<http://www.spec.org/cpu2006/flags/Dell-Platform-Settings-V1.2-revA.20120328.xml>

SPEC and SPECfp are registered trademarks of the Standard Performance Evaluation Corporation. All other brand and product names appearing in this result are trademarks or registered trademarks of their respective holders.

For questions about this result, please contact the tester.
For other inquiries, please contact webmaster@spec.org.

Tested with SPEC CPU2006 v1.2.
Report generated on Thu Jul 24 02:23:16 2014 by SPEC CPU2006 PS/PDF formatter v6932.
Originally published on 27 March 2012.