



SPEC® CFP2006 Result

Copyright 2006-2014 Standard Performance Evaluation Corporation

Fujitsu

SPECfp®2006 = **75.9**

PRIMERGY BX924 S3, Intel Xeon E5-2660, 2.20 GHz

SPECfp_base2006 = **71.8**

CPU2006 license: 19

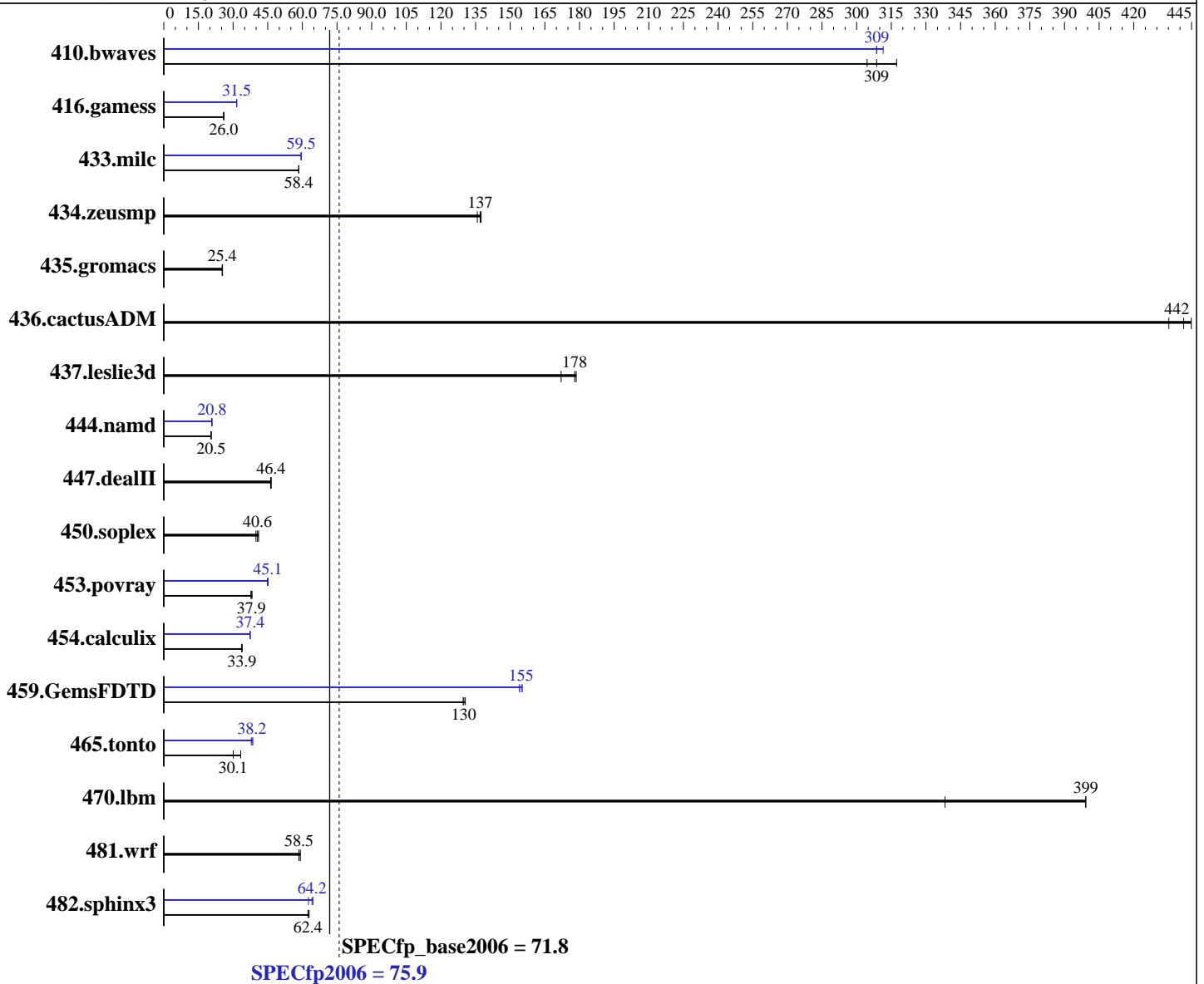
Test date: Jan-2012

Test sponsor: Fujitsu

Hardware Availability: Mar-2012

Tested by: Fujitsu

Software Availability: Dec-2011



Hardware

CPU Name: Intel Xeon E5-2660
 CPU Characteristics: Intel Turbo Boost Technology up to 3.0 GHz
 CPU MHz: 2200
 FPU: Integrated
 CPU(s) enabled: 16 cores, 2 chips, 8 cores/chip
 CPU(s) orderable: 1,2 chips
 Primary Cache: 32 KB I + 32 KB D on chip per core
 Secondary Cache: 256 KB I+D on chip per core

Continued on next page

Software

Operating System: Red Hat Enterprise Linux Server release 6.2 (Santiago)
 2.6.32-220.el6.x86_64
 Compiler: C/C++: Version 12.1.0.225 of Intel C++ Studio XE for Linux;
 Fortran: Version 12.1.0.225 of Intel Fortran Studio XE for Linux
 Auto Parallel: Yes
 File System: ext4

Continued on next page



SPEC CFP2006 Result

Copyright 2006-2014 Standard Performance Evaluation Corporation

Fujitsu

SPECfp2006 = **75.9**

PRIMERGY BX924 S3, Intel Xeon E5-2660, 2.20 GHz

SPECfp_base2006 = **71.8**

CPU2006 license: 19

Test sponsor: Fujitsu

Tested by: Fujitsu

Test date: Jan-2012

Hardware Availability: Mar-2012

Software Availability: Dec-2011

L3 Cache: 20 MB I+D on chip per chip
 Other Cache: None
 Memory: 128 GB (16 x 8 GB 2Rx4 PC3L-12800R-11, ECC)
 Disk Subsystem: 1 x SATA, 500 GB, 7200 RPM
 Other Hardware: PRIMERGY SX940 S1 for hw_disk

System State: Run level 3 (multi-user)
 Base Pointers: 64-bit
 Peak Pointers: 32/64-bit
 Other Software: None

Results Table

Benchmark	Base						Peak					
	Seconds	Ratio	Seconds	Ratio	Seconds	Ratio	Seconds	Ratio	Seconds	Ratio	Seconds	Ratio
410.bwaves	44.6	305	44.0	309	42.8	317	44.0	309	43.6	312	44.0	309
416.gamess	752	26.0	756	25.9	754	26.0	621	31.5	619	31.6	622	31.5
433.milc	157	58.5	157	58.4	157	58.4	154	59.5	154	59.4	154	59.5
434.zeusmp	66.4	137	66.2	137	67.0	136	66.4	137	66.2	137	67.0	136
435.gromacs	281	25.4	283	25.3	282	25.4	281	25.4	283	25.3	282	25.4
436.cactusADM	27.5	435	26.9	445	27.1	442	27.5	435	26.9	445	27.1	442
437.leslie3d	54.6	172	52.6	179	52.8	178	54.6	172	52.6	179	52.8	178
444.namd	392	20.5	392	20.5	391	20.5	385	20.8	385	20.8	385	20.8
447.dealII	247	46.4	247	46.2	246	46.5	247	46.4	247	46.2	246	46.5
450.soplex	203	41.0	209	39.9	206	40.6	203	41.0	209	39.9	206	40.6
453.povray	139	38.2	140	37.9	141	37.7	118	45.1	119	44.8	118	45.1
454.calculix	244	33.9	244	33.9	245	33.7	221	37.4	221	37.4	220	37.4
459.GemsFDTD	81.7	130	81.9	130	81.3	131	68.9	154	68.3	155	68.5	155
465.tonto	296	33.3	327	30.1	327	30.1	260	37.9	255	38.6	258	38.2
470.lbm	34.4	399	34.4	399	40.6	338	34.4	399	34.4	399	40.6	338
481.wrf	191	58.5	191	58.5	189	59.1	191	58.5	191	58.5	189	59.1
482.sphinx3	312	62.4	310	62.9	312	62.4	311	62.6	304	64.2	302	64.6

Results appear in the order in which they were run. Bold underlined text indicates a median measurement.

Operating System Notes

Stack size set to unlimited using "ulimit -s unlimited"

Platform Notes

BIOS configuration:
 Intel HT Technology = Disable
 Frequency Floor Override = Enable

General Notes

Environment variables set by runspec before the start of the run:
 KMP_AFFINITY = "granularity=fine,scatter"
 LD_LIBRARY_PATH = "/SPECcpu2006/libs/32:/SPECcpu2006/libs/64"

Continued on next page



SPEC CFP2006 Result

Copyright 2006-2014 Standard Performance Evaluation Corporation

Fujitsu

SPECfp2006 = 75.9

PRIMERGY BX924 S3, Intel Xeon E5-2660, 2.20 GHz

SPECfp_base2006 = 71.8

CPU2006 license: 19
Test sponsor: Fujitsu
Tested by: Fujitsu

Test date: Jan-2012
Hardware Availability: Mar-2012
Software Availability: Dec-2011

General Notes (Continued)

OMP_NUM_THREADS = "16"

Binaries compiled on a system with 1x Core i7-860 CPU + 8GB memory using RHEL5.5
Transparent Huge Pages enabled with:
echo always > /sys/kernel/mm/redhat_transparent_hugepage/enabled
For information about Fujitsu please visit: <http://www.fujitsu.com>

Base Compiler Invocation

C benchmarks:
icc -m64

C++ benchmarks:
icpc -m64

Fortran benchmarks:
ifort -m64

Benchmarks using both Fortran and C:
icc -m64 ifort -m64

Base Portability Flags

410.bwaves: -DSPEC_CPU_LP64
416.gamess: -DSPEC_CPU_LP64
433.milc: -DSPEC_CPU_LP64
434.zeusmp: -DSPEC_CPU_LP64
435.gromacs: -DSPEC_CPU_LP64 -nofor_main
436.cactusADM: -DSPEC_CPU_LP64 -nofor_main
437.lelie3d: -DSPEC_CPU_LP64
444.namd: -DSPEC_CPU_LP64
447.dealII: -DSPEC_CPU_LP64
450.soplex: -DSPEC_CPU_LP64
453.povray: -DSPEC_CPU_LP64
454.calculix: -DSPEC_CPU_LP64 -nofor_main
459.GemsFDTD: -DSPEC_CPU_LP64
465.tonto: -DSPEC_CPU_LP64
470.lbm: -DSPEC_CPU_LP64
481.wrf: -DSPEC_CPU_LP64 -DSPEC_CPU_CASE_FLAG -DSPEC_CPU_LINUX
482.sphinx3: -DSPEC_CPU_LP64

Base Optimization Flags

C benchmarks:
-xAVX -ipo -O3 -no-prec-div -static -parallel -opt-prefetch
-ansi-alias

Continued on next page



SPEC CFP2006 Result

Copyright 2006-2014 Standard Performance Evaluation Corporation

Fujitsu

SPECfp2006 = 75.9

PRIMERGY BX924 S3, Intel Xeon E5-2660, 2.20 GHz

SPECfp_base2006 = 71.8

CPU2006 license: 19

Test date: Jan-2012

Test sponsor: Fujitsu

Hardware Availability: Mar-2012

Tested by: Fujitsu

Software Availability: Dec-2011

Base Optimization Flags (Continued)

C++ benchmarks:

`-xAVX -ipo -O3 -no-prec-div -static -opt-prefetch -ansi-alias`

Fortran benchmarks:

`-xAVX -ipo -O3 -no-prec-div -static -parallel -opt-prefetch`

Benchmarks using both Fortran and C:

`-xAVX -ipo -O3 -no-prec-div -static -parallel -opt-prefetch
-ansi-alias`

Peak Compiler Invocation

C benchmarks:

`icc -m64`

C++ benchmarks:

`icpc -m64`

Fortran benchmarks:

`ifort -m64`

Benchmarks using both Fortran and C:

`icc -m64 ifort -m64`

Peak Portability Flags

Same as Base Portability Flags

Peak Optimization Flags

C benchmarks:

433.milc: `-xAVX(pass 2) -prof-gen(pass 1) -ipo(pass 2) -O3(pass 2)
-no-prec-div(pass 2) -prof-use(pass 2) -static -auto-ilp32
-ansi-alias`

470.lbm: `basepeak = yes`

482.sphinx3: `-xAVX -ipo -O3 -no-prec-div -unroll2 -ansi-alias
-parallel`

Continued on next page



SPEC CFP2006 Result

Copyright 2006-2014 Standard Performance Evaluation Corporation

Fujitsu

SPECfp2006 = 75.9

PRIMERGY BX924 S3, Intel Xeon E5-2660, 2.20 GHz

SPECfp_base2006 = 71.8

CPU2006 license: 19

Test date: Jan-2012

Test sponsor: Fujitsu

Hardware Availability: Mar-2012

Tested by: Fujitsu

Software Availability: Dec-2011

Peak Optimization Flags (Continued)

C++ benchmarks:

444.namd: -xAVX(pass 2) -prof-gen(pass 1) -ipo(pass 2) -O3(pass 2)
-no-prec-div(pass 2) -prof-use(pass 2) -fno-alias
-auto-ilp32

447.dealII: basepeak = yes

450.soplex: basepeak = yes

453.povray: -xAVX(pass 2) -prof-gen(pass 1) -ipo(pass 2) -O3(pass 2)
-no-prec-div(pass 2) -prof-use(pass 2) -unroll4 -ansi-alias

Fortran benchmarks:

410.bwaves: -xAVX -ipo -O3 -no-prec-div -opt-prefetch -parallel
-static

416.gamess: -xAVX(pass 2) -prof-gen(pass 1) -ipo(pass 2) -O3(pass 2)
-no-prec-div(pass 2) -prof-use(pass 2) -unroll2
-inline-level=0 -scalar-rep- -static

434.zeusmp: basepeak = yes

437.leslie3d: basepeak = yes

459.GemsFDTD: -xAVX(pass 2) -prof-gen(pass 1) -ipo(pass 2) -O3(pass 2)
-no-prec-div(pass 2) -prof-use(pass 2) -unroll2
-inline-level=0 -opt-prefetch -parallel

465.tonto: -xAVX(pass 2) -prof-gen(pass 1) -ipo(pass 2) -O3(pass 2)
-no-prec-div(pass 2) -prof-use(pass 2) -inline-calloc
-opt-malloc-options=3 -auto -unroll4

Benchmarks using both Fortran and C:

435.gromacs: basepeak = yes

436.cactusADM: basepeak = yes

454.calculix: -xAVX -ipo -O3 -no-prec-div -auto-ilp32 -ansi-alias

481.wrf: basepeak = yes

The flags files that were used to format this result can be browsed at

<http://www.spec.org/cpu2006/flags/Intel-ic12.1-official-linux64.20111122.html>

<http://www.spec.org/cpu2006/flags/Fujitsu-Platform.20120313.00.html>



SPEC CFP2006 Result

Copyright 2006-2014 Standard Performance Evaluation Corporation

Fujitsu

SPECfp2006 = 75.9

PRIMERGY BX924 S3, Intel Xeon E5-2660, 2.20 GHz

SPECfp_base2006 = 71.8

CPU2006 license: 19

Test sponsor: Fujitsu

Tested by: Fujitsu

Test date: Jan-2012

Hardware Availability: Mar-2012

Software Availability: Dec-2011

You can also download the XML flags sources by saving the following links:

<http://www.spec.org/cpu2006/flags/Intel-ic12.1-official-linux64.20111122.xml>

<http://www.spec.org/cpu2006/flags/Fujitsu-Platform.20120313.00.xml>

SPEC and SPECfp are registered trademarks of the Standard Performance Evaluation Corporation. All other brand and product names appearing in this result are trademarks or registered trademarks of their respective holders.

For questions about this result, please contact the tester.
For other inquiries, please contact webmaster@spec.org.

Tested with SPEC CPU2006 v1.2.
Report generated on Thu Jul 24 03:29:36 2014 by SPEC CPU2006 PS/PDF formatter v6932.
Originally published on 29 March 2012.