



SPEC[®] CFP2006 Result

Copyright 2006-2014 Standard Performance Evaluation Corporation

Fujitsu

SPECfp[®]2006 = 34.3

PRIMERGY RX600 S6, Intel Xeon E7-2803, 1.73 GHz

SPECfp_base2006 = 31.4

CPU2006 license: 19

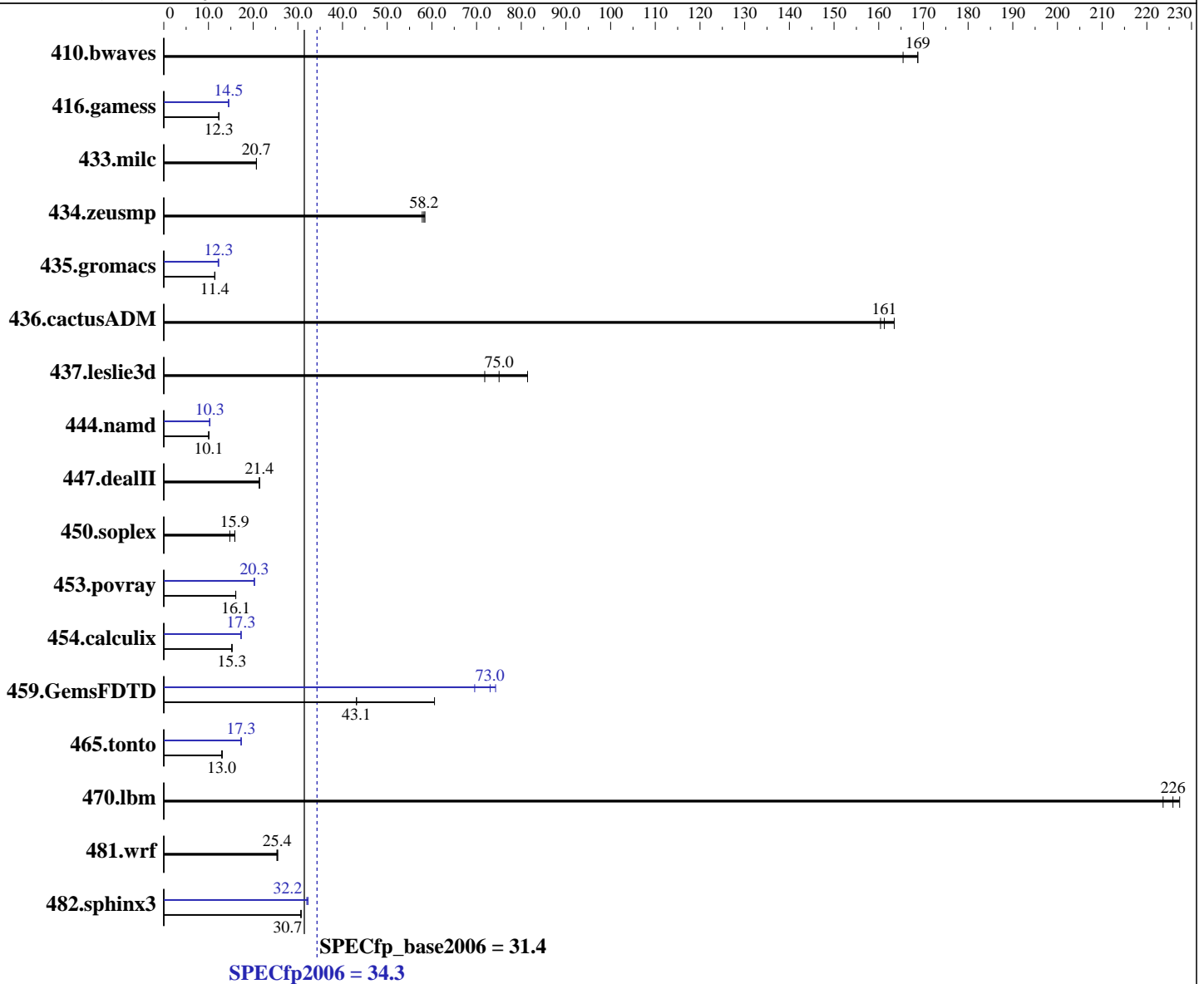
Test date: Jul-2011

Test sponsor: Fujitsu

Hardware Availability: Jul-2011

Tested by: Fujitsu

Software Availability: Jul-2011



Hardware

CPU Name: Intel Xeon E7-2803
 CPU Characteristics:
 CPU MHz: 1733
 FPU: Integrated
 CPU(s) enabled: 12 cores, 2 chips, 6 cores/chip
 CPU(s) orderable: 2 chips
 Primary Cache: 32 KB I + 32 KB D on chip per core
 Secondary Cache: 256 KB I+D on chip per core

Continued on next page

Software

Operating System: SUSE Linux Enterprise Server 11 (x86_64) SP1, Kernel 2.6.32.12-0.7-default
 Compiler: Intel C++ and Fortran Intel 64 Compiler XE for applications running on Intel 64 Version 12.0.4.191 Build 20110427
 Auto Parallel: Yes
 File System: ext3
 System State: Run level 3 (multi-user)
 Base Pointers: 64-bit

Continued on next page



SPEC CFP2006 Result

Copyright 2006-2014 Standard Performance Evaluation Corporation

Fujitsu

SPECfp2006 = **34.3**

PRIMERGY RX600 S6, Intel Xeon E7-2803, 1.73 GHz

SPECfp_base2006 = **31.4**

CPU2006 license: 19

Test sponsor: Fujitsu

Tested by: Fujitsu

Test date: Jul-2011

Hardware Availability: Jul-2011

Software Availability: Jul-2011

L3 Cache: 18 MB I+D on chip per chip
Other Cache: None
Memory: 128 GB (16 x 8 GB 4Rx8 PC3L-8500R-7, ECC, running at 800 MHz)
Disk Subsystem: 1 x SAS, 600 GB, 10000 RPM
Other Hardware: --

Peak Pointers: 32/64-bit
Other Software: None

Results Table

Benchmark	Base						Peak					
	Seconds	Ratio	Seconds	Ratio	Seconds	Ratio	Seconds	Ratio	Seconds	Ratio	Seconds	Ratio
410.bwaves	80.5	169	82.1	165	80.5	169	80.5	169	82.1	165	80.5	169
416.gamess	1590	12.3	1591	12.3	1586	12.3	1351	14.5	1350	14.5	1351	14.5
433.milc	443	20.7	443	20.7	443	20.7	443	20.7	443	20.7	443	20.7
434.zeusmp	156	58.4	157	57.8	156	58.2	156	58.4	157	57.8	156	58.2
435.gromacs	623	11.5	626	11.4	626	11.4	582	12.3	587	12.2	583	12.3
436.cactusADM	73.1	163	74.1	161	74.5	160	73.1	163	74.1	161	74.5	160
437.leslie3d	125	75.0	131	71.8	115	81.4	125	75.0	131	71.8	115	81.4
444.namd	796	10.1	797	10.1	797	10.1	780	10.3	780	10.3	781	10.3
447.dealII	534	21.4	535	21.4	535	21.4	534	21.4	535	21.4	535	21.4
450.soplex	565	14.8	524	15.9	525	15.9	565	14.8	524	15.9	525	15.9
453.povray	330	16.1	331	16.1	330	16.1	263	20.2	262	20.3	262	20.3
454.calculix	543	15.2	539	15.3	541	15.3	477	17.3	477	17.3	478	17.3
459.GemsFDTD	246	43.1	246	43.1	175	60.6	152	69.6	143	74.3	145	73.0
465.tonto	752	13.1	758	13.0	758	13.0	568	17.3	569	17.3	568	17.3
470.lbm	61.4	224	60.4	227	60.8	226	61.4	224	60.4	227	60.8	226
481.wrf	440	25.4	438	25.5	441	25.3	440	25.4	438	25.5	441	25.3
482.sphinx3	634	30.7	636	30.7	635	30.7	609	32.0	604	32.3	605	32.2

Results appear in the order in which they were run. Bold underlined text indicates a median measurement.

Operating System Notes

```
'ulimit -s unlimited' was used to set the stacksize to unlimited prior to run
'nodet /mnt/hugepages hugetlbfs defaults 0 0' added to /etc/fstab
echo 10800 > /proc/sys/vm/nr_hugepages
export HUGETLB_MORECORE=yes
export LD_PRELOAD=/usr/lib64/libhugetlbfs.so
```

Platform Notes

BIOS configuration:
Data Reuse Optimization = Disable
Performance/Power Setting = Traditional
Intel HT Technology = Disable



SPEC CFP2006 Result

Copyright 2006-2014 Standard Performance Evaluation Corporation

Fujitsu

SPECfp2006 = 34.3

PRIMERGY RX600 S6, Intel Xeon E7-2803, 1.73 GHz

SPECfp_base2006 = 31.4

CPU2006 license: 19
Test sponsor: Fujitsu
Tested by: Fujitsu

Test date: Jul-2011
Hardware Availability: Jul-2011
Software Availability: Jul-2011

General Notes

OMP_NUM_THREADS set to number of cores
Binaries were compiled on RHEL5.5
For information about Fujitsu please visit: <http://www.fujitsu.com>

Base Compiler Invocation

C benchmarks:
icc -m64

C++ benchmarks:
icpc -m64

Fortran benchmarks:
ifort -m64

Benchmarks using both Fortran and C:
icc -m64 ifort -m64

Base Portability Flags

410.bwaves: -DSPEC_CPU_LP64
416.gamess: -DSPEC_CPU_LP64
433.milc: -DSPEC_CPU_LP64
434.zeusmp: -DSPEC_CPU_LP64
435.gromacs: -DSPEC_CPU_LP64 -nofor_main
436.cactusADM: -DSPEC_CPU_LP64 -nofor_main
437.leslie3d: -DSPEC_CPU_LP64
444.namd: -DSPEC_CPU_LP64
447.dealII: -DSPEC_CPU_LP64
450.soplex: -DSPEC_CPU_LP64
453.povray: -DSPEC_CPU_LP64
454.calculix: -DSPEC_CPU_LP64 -nofor_main
459.GemsFDTD: -DSPEC_CPU_LP64
465.tonto: -DSPEC_CPU_LP64
470.lbm: -DSPEC_CPU_LP64
481.wrf: -DSPEC_CPU_LP64 -DSPEC_CPU_CASE_FLAG -DSPEC_CPU_LINUX
482.sphinx3: -DSPEC_CPU_LP64

Base Optimization Flags

C benchmarks:
-xSSE4.2 -ipo -O3 -no-prec-div -static -parallel -opt-prefetch
-ansi-alias

C++ benchmarks:
-xSSE4.2 -ipo -O3 -no-prec-div -static -opt-prefetch -ansi-alias

Continued on next page



SPEC CFP2006 Result

Copyright 2006-2014 Standard Performance Evaluation Corporation

Fujitsu

SPECfp2006 = 34.3

PRIMERGY RX600 S6, Intel Xeon E7-2803, 1.73 GHz

SPECfp_base2006 = 31.4

CPU2006 license: 19

Test sponsor: Fujitsu

Tested by: Fujitsu

Test date: Jul-2011

Hardware Availability: Jul-2011

Software Availability: Jul-2011

Base Optimization Flags (Continued)

Fortran benchmarks:

`-xSSE4.2 -ipo -O3 -no-prec-div -static -parallel -opt-prefetch`

Benchmarks using both Fortran and C:

`-xSSE4.2 -ipo -O3 -no-prec-div -static -parallel -opt-prefetch
-ansi-alias`

Peak Compiler Invocation

C benchmarks:

`icc -m64`

C++ benchmarks:

`icpc -m64`

Fortran benchmarks:

`ifort -m64`

Benchmarks using both Fortran and C:

`icc -m64 ifort -m64`

Peak Portability Flags

Same as Base Portability Flags

Peak Optimization Flags

C benchmarks:

433.milc: basepeak = yes

470.lbm: basepeak = yes

482.sphinx3: `-xSSE4.2 -ipo -O3 -no-prec-div -unroll2 -ansi-alias
-parallel`

C++ benchmarks:

444.namd: `-xSSE4.2(pass 2) -prof-gen(pass 1) -ipo(pass 2) -O3(pass 2)
-no-prec-div(pass 2) -prof-use(pass 2) -fno-alias
-auto-ilp32`

447.dealIII: basepeak = yes

Continued on next page



SPEC CFP2006 Result

Copyright 2006-2014 Standard Performance Evaluation Corporation

Fujitsu

SPECfp2006 = 34.3

PRIMERGY RX600 S6, Intel Xeon E7-2803, 1.73 GHz

SPECfp_base2006 = 31.4

CPU2006 license: 19

Test date: Jul-2011

Test sponsor: Fujitsu

Hardware Availability: Jul-2011

Tested by: Fujitsu

Software Availability: Jul-2011

Peak Optimization Flags (Continued)

450.soplex: basepeak = yes

453.povray: -xSSE4.2(pass 2) -prof-gen(pass 1) -ipo(pass 2) -O3(pass 2)
-no-prec-div(pass 2) -prof-use(pass 2) -unroll4 -ansi-alias
-B /usr/share/libhugetlbfs/ -Wl,-melf_x86_64 -Wl,-hugetlbfs-link=BDT

Fortran benchmarks:

410.bwaves: basepeak = yes

416.gamess: -xSSE4.2(pass 2) -prof-gen(pass 1) -ipo(pass 2) -O3(pass 2)
-no-prec-div(pass 2) -prof-use(pass 2) -unroll2
-inline-level=0 -scalar-rep- -static

434.zeusmp: basepeak = yes

437.leslie3d: basepeak = yes

459.GemsFDTD: -xSSE4.2(pass 2) -prof-gen(pass 1) -ipo(pass 2) -O3(pass 2)
-no-prec-div(pass 2) -prof-use(pass 2) -unroll2
-inline-level=0 -opt-prefetch -parallel
-B /usr/share/libhugetlbfs/ -Wl,-melf_x86_64 -Wl,-hugetlbfs-link=BDT

465.tonto: -xSSE4.2(pass 2) -prof-gen(pass 1) -ipo(pass 2) -O3(pass 2)
-no-prec-div(pass 2) -prof-use(pass 2) -inline-calloc
-opt-malloc-options=3 -auto -unroll4
-B /usr/share/libhugetlbfs/ -Wl,-melf_x86_64 -Wl,-hugetlbfs-link=BDT

Benchmarks using both Fortran and C:

435.gromacs: -xSSE4.2(pass 2) -prof-gen(pass 1) -ipo(pass 2) -O3(pass 2)
-no-prec-div(pass 2) -prof-use(pass 2) -static -auto-ilp32
-ansi-alias

436.cactusADM: basepeak = yes

454.calculix: -xSSE4.2 -ipo -O3 -no-prec-div -auto-ilp32 -ansi-alias

481.wrf: basepeak = yes

The flags files that were used to format this result can be browsed at

<http://www.spec.org/cpu2006/flags/Intel-ic12.0-linux64-revB.20110316.html>

<http://www.spec.org/cpu2006/flags/Fujitsu-Platform.20110705.html>

You can also download the XML flags sources by saving the following links:

<http://www.spec.org/cpu2006/flags/Intel-ic12.0-linux64-revB.20110316.xml>

<http://www.spec.org/cpu2006/flags/Fujitsu-Platform.20110705.xml>



SPEC CFP2006 Result

Copyright 2006-2014 Standard Performance Evaluation Corporation

Fujitsu

SPECfp2006 = 34.3

PRIMERGY RX600 S6, Intel Xeon E7-2803, 1.73 GHz

SPECfp_base2006 = 31.4

CPU2006 license: 19

Test sponsor: Fujitsu

Tested by: Fujitsu

Test date: Jul-2011

Hardware Availability: Jul-2011

Software Availability: Jul-2011

SPEC and SPECfp are registered trademarks of the Standard Performance Evaluation Corporation. All other brand and product names appearing in this result are trademarks or registered trademarks of their respective holders.

For questions about this result, please contact the tester.
For other inquiries, please contact webmaster@spec.org.

Tested with SPEC CPU2006 v1.1.
Report generated on Wed Jul 23 22:37:59 2014 by SPEC CPU2006 PS/PDF formatter v6932.
Originally published on 13 September 2011.