



# SPEC CPU®2026 Floating Point Rate Result

Copyright 2026 Standard Performance Evaluation Corporation

**Fsas Technologies Inc.**

(Test Sponsor: Fujitsu)

PRIMERGY RX2540 M8, Intel Xeon 6787P,  
2.00GHz

SPECrate®2026\_fp\_base = 730

SPECrate®2026\_fp\_peak = Not Run

CPU2026 License: 19

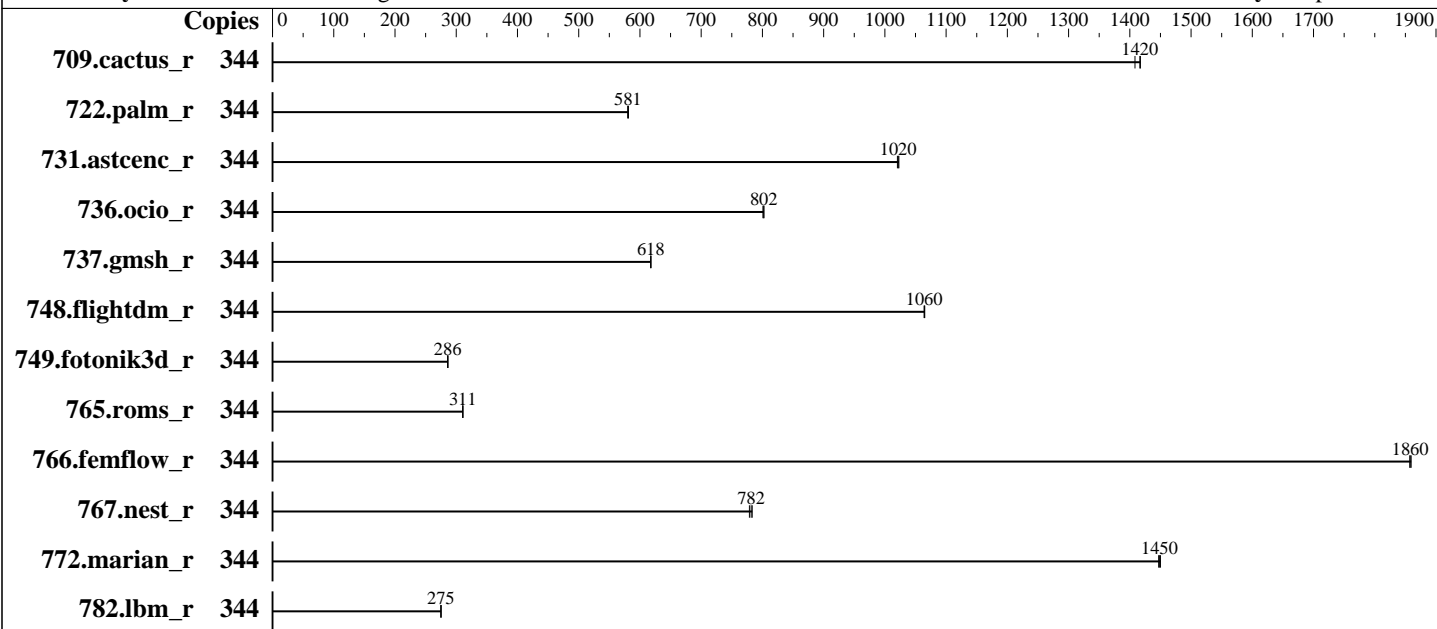
Test Sponsor: Fujitsu

Tested by: Fsas Technologies Inc.

Test Date: May-2026

Hardware Availability: Oct-2025

Software Availability: Apr-2026



## Hardware

CPU Name: Intel Xeon 6787P  
 Max MHz: 3800  
 Nominal: 2000  
 Enabled: 172 cores, 2 chips, 2 threads/core  
 Orderable: 1,2 chips  
 Cache L1: 64 KB I + 48 KB D on chip per core  
 L2: 2 MB I+D on chip per core  
 L3: 336 MB I+D on chip per chip  
 Other: None  
 Memory: 1 TB (16 x 64 GB 2Rx4 PC5-88/56B-M, running at 8000)  
 Storage: 1 x PCIe SSD, 1.92TB  
 Cooling: Air  
 Other: None

## Software

OS: SUSE Linux Enterprise Server 15 SP7  
 6.4.0-150700.51-default  
 Compiler: C/C++: Version 2026.0 of Intel oneAPI DPC++/C++ Compiler for Linux;  
 Fortran: Version 2026.0 of Intel Fortran Compiler for Linux  
 Compiler Category: Vendor  
 Firmware: Fsas Technologies Inc. BIOS Version V1.0.0.0 R1.5.0 for D4135-A1x. Released Apr-2026  
 File System: btrfs  
 System State: Run level 3 (multi-user)  
 Base Pointers: 64-bit  
 Peak Pointers: Not Applicable  
 Other: jemalloc memory allocator v5.3  
 Power Management: BIOS set to prefer performance at the cost of additional power usage



# SPEC CPU®2026 Floating Point Rate Result

Copyright 2026 Standard Performance Evaluation Corporation

Fsas Technologies Inc.

(Test Sponsor: Fujitsu)

PRIMERGY RX2540 M8, Intel Xeon 6787P,  
2.00GHz

SPECrate®2026\_fp\_base = 730

SPECrate®2026\_fp\_peak = Not Run

CPU2026 License: 19

Test Sponsor: Fujitsu

Tested by: Fsas Technologies Inc.

Test Date: May-2026

Hardware Availability: Oct-2025

Software Availability: Apr-2026

## Results Table

Benchmark	Base							Peak						
	Copies	Seconds	Ratio	Seconds	Ratio	Seconds	Ratio	Copies	Seconds	Ratio	Seconds	Ratio	Seconds	Ratio
709.cactus_r	344	210	1410	208	1420	<b>208</b>	<b>1420</b>							
722.palm_r	344	781	581	783	580	<b>782</b>	<b>581</b>							
731.ascenc_r	344	283	1020	<b>283</b>	<b>1020</b>	283	1020							
736.ocio_r	344	376	801	375	802	<b>375</b>	<b>802</b>							
737.gmsh_r	344	256	618	256	618	<b>256</b>	<b>618</b>							
748.flightdm_r	344	<b>231</b>	<b>1060</b>	231	1060	231	1070							
749.fotonik3d_r	344	1391	286	<b>1390</b>	<b>286</b>	1388	286							
765.roms_r	344	1743	311	<b>1743</b>	<b>311</b>	1744	311							
766.femflow_r	344	<b>272</b>	<b>1860</b>	271	1860	272	1860							
767.nest_r	344	350	779	<b>349</b>	<b>782</b>	348	783							
772.marian_r	344	375	1450	<b>375</b>	<b>1450</b>	375	1450							
782.lbm_r	344	716	275	<b>716</b>	<b>275</b>	717	275							

SPECrate®2026\_fp\_base = 730

SPECrate®2026\_fp\_peak = Not Run

Results appear in the order in which they were run. Bold underlined text indicates a median measurement.

## Submit Notes

The numactl mechanism was used to bind copies to processors. The config file option 'submit' was used to generate numactl commands to bind each copy to a specific processor. For details, please see the config file.

## Operating System Notes

Stack size set to unlimited using "ulimit -s unlimited"

## Environment Variables Notes

Environment variables set by runcpu before the start of the run:  
LD\_LIBRARY\_PATH = "/home/Benchmark/cpu2026/lib"  
MALLOC\_CONF = "retain:true"

## General Notes

Binaries compiled on a system with 2x Intel Xeon Platinum 8280M CPU + 384GB RAM memory using CentOS Stream 9.  
Transparent Huge Pages enabled by default  
Prior to runcpu invocation  
Filesystem page cache synced and cleared with:  
sync; echo 3> /proc/sys/vm/drop\_caches

(Continued on next page)



# SPEC CPU®2026 Floating Point Rate Result

Copyright 2026 Standard Performance Evaluation Corporation

**Fsas Technologies Inc.**

(Test Sponsor: Fujitsu)

PRIMERGY RX2540 M8, Intel Xeon 6787P,  
2.00GHz

SPECrate®2026\_fp\_base = 730

SPECrate®2026\_fp\_peak = Not Run

**CPU2026 License:** 19

**Test Sponsor:** Fujitsu

**Tested by:** Fsas Technologies Inc.

**Test Date:** May-2026

**Hardware Availability:** Oct-2025

**Software Availability:** Apr-2026

## General Notes (Continued)

runcpu command invoked through numactl i.e.:  
numactl --interleave=all runcpu <etc>  
jemalloc, a general purpose malloc implementation  
built with the CentOS Stream 9, and the system compiler gcc 11.5.0  
sources available from jemalloc.net or <https://github.com/jemalloc/jemalloc/releases>

## Platform Notes

BIOS Settings:

Fan Control = Full

SNC (Sub NUMA) = Enabled

CPU Performance Boost = Aggressive

Latency Optimized Mode = Enabled

UPI Link Frequency Select = 16.0GT/s

Sysinfo program /home/Benchmark/cpu2026/bin/sysinfo

Rev: 779ab21020787073335a329f3a45e2cd

running on localhost Wed May 20 08:04:00 2026

SUT (System Under Test) info as seen by some common utilities.

-----  
Table of contents  
-----

1. uname -srvm
2. w
3. Username
4. ulimit -a
5. sysinfo process ancestry
6. /proc/cpuinfo
7. lscpu
8. numactl --hardware
9. /proc/meminfo
10. who -r
11. Systemd service manager version: systemd 254 (254.24+suse.148.g83b9060b6e)
12. Services, from systemctl list-unit-files
13. Linux kernel boot-time arguments, from /proc/cmdline
14. cpupower frequency-info
15. sysctl
16. /sys/kernel/mm/transparent\_hugepage
17. /sys/kernel/mm/transparent\_hugepage/khugepaged
18. OS release
19. Disk information
20. /sys/devices/virtual/dmi/id
21. dmidecode
22. BIOS

(Continued on next page)



# SPEC CPU®2026 Floating Point Rate Result

Copyright 2026 Standard Performance Evaluation Corporation

**Fsas Technologies Inc.**

(Test Sponsor: Fujitsu)

PRIMERGY RX2540 M8, Intel Xeon 6787P,  
2.00GHz

SPECrate®2026\_fp\_base = 730

SPECrate®2026\_fp\_peak = Not Run

**CPU2026 License:** 19

**Test Sponsor:** Fujitsu

**Tested by:** Fsas Technologies Inc.

**Test Date:** May-2026

**Hardware Availability:** Oct-2025

**Software Availability:** Apr-2026

## Platform Notes (Continued)

1. `uname -srvm`

```
Linux 6.4.0-150700.51-default #1 SMP PREEMPT_DYNAMIC Wed Apr 30 21:35:43 UTC 2025 (6930611) x86_64
```

2. `w`

```
08:04:00 up 12:00, 1 user, load average: 77.36, 253.49, 308.24
USER      TTY      FROM          LOGIN@   IDLE   JCPU   PCPU   WHAT
root      tty1    -             20:06   11:56m 1.52s  0.12s -bash
```

3. Username

```
From environment variable $USER: root
```

4. `ulimit -a`

```
core file size          (blocks, -c) unlimited
data seg size           (kbytes, -d) unlimited
scheduling priority     (-e) 0
file size               (blocks, -f) unlimited
pending signals         (-i) 4126001
max locked memory       (kbytes, -l) 8192
max memory size         (kbytes, -m) unlimited
open files              (-n) 1024
pipe size               (512 bytes, -p) 8
POSIX message queues    (bytes, -q) 819200
real-time priority      (-r) 0
stack size              (kbytes, -s) unlimited
cpu time                (seconds, -t) unlimited
max user processes     (-u) 4126001
virtual memory          (kbytes, -v) unlimited
file locks              (-x) unlimited
```

5. `sysinfo process ancestry`

```
/usr/lib/systemd/systemd --switched-root --system --deserialize=42
login -- root
-bash
-bash
runcpu --nobuild --action validate --define default-platform-flags --copies 344 -c
ic2026.0-graniterapids-cpu2026-1.0.1-rate-20260429.cfg --define smt-on --define cores=172 --define
physicalfirst --define invoke_with_interleave --define drop_caches --tune base -n 3 -o all fprate
runcpu --nobuild --action validate --define default-platform-flags --copies 344 --configfile
ic2026.0-graniterapids-cpu2026-1.0.1-rate-20260429.cfg --define smt-on --define cores=172 --define
physicalfirst --define invoke_with_interleave --define drop_caches --tune base --iterations 3
```

(Continued on next page)



# SPEC CPU®2026 Floating Point Rate Result

Copyright 2026 Standard Performance Evaluation Corporation

**Fsas Technologies Inc.**

(Test Sponsor: Fujitsu)

PRIMERGY RX2540 M8, Intel Xeon 6787P,  
2.00GHz

SPECrate®2026\_fp\_base = 730

SPECrate®2026\_fp\_peak = Not Run

**CPU2026 License:** 19

**Test Sponsor:** Fujitsu

**Tested by:** Fsas Technologies Inc.

**Test Date:** May-2026

**Hardware Availability:** Oct-2025

**Software Availability:** Apr-2026

## Platform Notes (Continued)

```
--output_format all --nopower --runmode rate --tune base --size refrate fprate --nopreenv --note-preenv
--logfile $SPEC/tmp/CPU2026.001/templogs/preenv.fprate.001.0.log --lognum 001.0 --from_runcpu 2
specperl $SPEC/bin/sysinfo
$SPEC = /home/Benchmark/cpu2026
```

### 6. /proc/cpuinfo

```
model name      : Intel(R) Xeon(R) 6787P
vendor_id      : GenuineIntel
cpu family     : 6
model          : 173
stepping       : 1
microcode      : 0x1000405
bugs           : spectre_v1 spectre_v2 spec_store_bypass swapgs bhi
cpu cores      : 86
siblings       : 172
2 physical ids (chips)
344 processors (hardware threads)
physical id 0: core ids 0-42,64-106
physical id 1: core ids 0-42,64-106
physical id 0: apicids 0-85,128-213
physical id 1: apicids 256-341,384-469
```

Caution: /proc/cpuinfo data regarding chips, cores, and threads is not necessarily reliable, especially for virtualized systems. Use the above data carefully.

### 7. lscpu

From lscpu from util-linux 2.40.4:

```
Architecture:          x86_64
CPU op-mode(s):        32-bit, 64-bit
Address sizes:         52 bits physical, 57 bits virtual
Byte Order:            Little Endian
CPU(s):                344
On-line CPU(s) list:   0-343
Vendor ID:             GenuineIntel
Model name:            Intel(R) Xeon(R) 6787P
CPU family:            6
Model:                 173
Thread(s) per core:    2
Core(s) per socket:    86
Socket(s):              2
Stepping:              1
CPU(s) scaling MHz:    22%
CPU max MHz:           3800.0000
CPU min MHz:           800.0000
BogoMIPS:              4000.00
```

(Continued on next page)



# SPEC CPU®2026 Floating Point Rate Result

Copyright 2026 Standard Performance Evaluation Corporation

**Fsas Technologies Inc.**

(Test Sponsor: Fujitsu)

**PRIMERGY RX2540 M8, Intel Xeon 6787P,  
2.00GHz**

**SPECrate®2026\_fp\_base = 730**

**SPECrate®2026\_fp\_peak = Not Run**

**CPU2026 License:** 19

**Test Sponsor:** Fujitsu

**Tested by:** Fsas Technologies Inc.

**Test Date:** May-2026

**Hardware Availability:** Oct-2025

**Software Availability:** Apr-2026

## Platform Notes (Continued)

Flags:

```

fpu vme de pse tsc msr pae mce cx8 apic sep mtrr pge mca cmov pat
pse36 clflush dts acpi mmx fxsr sse sse2 ss ht tm pbe syscall nx
pdpe1gb rdtscp lm constant_tsc art arch_perfmon pebs bts rep_good
nopl xtopology nonstop_tsc cpuid aperfmperf tsc_known_freq pni
pclmulqdq dtes64 monitor ds_cpl vmx smx est tm2 ssse3 sdbg fma cx16
xtpr pdcm pcid dca sse4_1 sse4_2 x2apic movbe popcnt
tsc_deadline_timer aes xsave avx fl6c rdrand lahf_lm abm
3dnowprefetch cpuid_fault epb cat_l3 cat_l2 cdp_l3 intel_ppin cdp_l2
ssbd mba ibrs ibpb stibp ibrs_enhanced tpr_shadow flexpriority ept
vpid ept_ad fsgsbase tsc_adjust bmi1 avx2 smep bmi2 erms invpcid cqm
rdt_a avx512f avx512dq rdseed adx smap avx512ifma clflushopt clwb
intel_pt avx512cd sha_ni avx512bw avx512vl xsaveopt xsavec xgetbv1
xsaves cqm_llc cqm_occup_llc cqm_mbm_total cqm_mbm_local
split_lock_detect user_shstk avx_vnni avx512_bf16 wbnoinvd dtherm ida
arat pln pts hwp hwp_act_window hwp_epp hwp_pkg_req vnmi avx512vbmi
umip pku ospke waitpkg avx512_vbmi2 gfni vaes vpclmulqdq avx512_vnni
avx512_bitalg tme avx512_vpopcntdq la57 rdpid bus_lock_detect
cldemote movdiri movdir64b enqcmd fsrm md_clear serialize tsxldtrk
pconfig arch_lbr ibt amx_bf16 avx512_fp16 amx_tile amx_int8 flush_l1d
arch_capabilities

```

Virtualization:

VT-x

L1d cache:

8.1 MiB (172 instances)

L1i cache:

10.8 MiB (172 instances)

L2 cache:

344 MiB (172 instances)

L3 cache:

672 MiB (2 instances)

NUMA node(s):

4

NUMA node0 CPU(s):

0-42,172-214

NUMA node1 CPU(s):

43-85,215-257

NUMA node2 CPU(s):

86-128,258-300

NUMA node3 CPU(s):

129-171,301-343

Vulnerability Gather data sampling:

Not affected

Vulnerability Itlb multihit:

Not affected

Vulnerability L1tf:

Not affected

Vulnerability Mds:

Not affected

Vulnerability Meltdown:

Not affected

Vulnerability Mmio stale data:

Not affected

Vulnerability Reg file data sampling: Not affected

Vulnerability Retbleed:

Not affected

Vulnerability Spec rstack overflow: Not affected

Vulnerability Spec store bypass:

Mitigation; Speculative Store Bypass disabled via prctl

Vulnerability Spectre v1:

Mitigation; usercopy/swapgs barriers and \_\_user pointer sanitization

Vulnerability Spectre v2:

Mitigation; Enhanced / Automatic IBRS; IBPB conditional; RSB filling;

PBRSE-eIBRS Not affected; BHI BHI\_DIS\_S

Vulnerability Srbds:

Not affected

Vulnerability Tsx async abort:

Not affected

From lscpu --cache:

(Continued on next page)



# SPEC CPU®2026 Floating Point Rate Result

Copyright 2026 Standard Performance Evaluation Corporation

**Fsas Technologies Inc.**

(Test Sponsor: Fujitsu)

PRIMERGY RX2540 M8, Intel Xeon 6787P,  
2.00GHz

SPECrate®2026\_fp\_base = 730

SPECrate®2026\_fp\_peak = Not Run

**CPU2026 License:** 19

**Test Sponsor:** Fujitsu

**Tested by:** Fsas Technologies Inc.

**Test Date:** May-2026

**Hardware Availability:** Oct-2025

**Software Availability:** Apr-2026

## Platform Notes (Continued)

NAME	ONE-SIZE	ALL-SIZE	WAYS	TYPE	LEVEL	SETS	PHY-LINE	COHERENCY-SIZE
Lld	48K	8.1M	12	Data	1	64	1	64
Lli	64K	10.8M	16	Instruction	1	64	1	64
L2	2M	344M	16	Unified	2	2048	1	64
L3	336M	672M	16	Unified	3	344064	1	64

8. numactl --hardware

NOTE: a numactl 'node' might or might not correspond to a physical chip.

```

available: 4 nodes (0-3)
node 0 cpus: 0-42,172-214
node 0 size: 257568 MB
node 0 free: 256473 MB
node 1 cpus: 43-85,215-257
node 1 size: 258025 MB
node 1 free: 257180 MB
node 2 cpus: 86-128,258-300
node 2 size: 258025 MB
node 2 free: 257026 MB
node 3 cpus: 129-171,301-343
node 3 size: 257908 MB
node 3 free: 256602 MB
node distances:
node  0  1  2  3
  0:  10  12  21  21
  1:  12  10  21  21
  2:  21  21  10  12
  3:  21  21  12  10

```

9. /proc/meminfo

MemTotal: 1056283928 kB

10. who -r

run-level 3 May 19 20:05

11. Systemd service manager version: systemd 254 (254.24+suse.148.g83b9060b6e)

Default Target	Status
multi-user	running

12. Services, from systemctl list-unit-files

STATE	UNIT FILES
enabled	YaST2-Firstboot YaST2-Second-Stage apparmor auditd cron display-manager getty@ irqbalance issue-generator kbdsettings klog lvm2-monitor nscd nvme-fc-boot-connections

(Continued on next page)



# SPEC CPU®2026 Floating Point Rate Result

Copyright 2026 Standard Performance Evaluation Corporation

**Fsas Technologies Inc.**

(Test Sponsor: Fujitsu)

PRIMERGY RX2540 M8, Intel Xeon 6787P,  
2.00GHz

SPECrate®2026\_fp\_base = 730

SPECrate®2026\_fp\_peak = Not Run

**CPU2026 License:** 19

**Test Sponsor:** Fujitsu

**Tested by:** Fsas Technologies Inc.

**Test Date:** May-2026

**Hardware Availability:** Oct-2025

**Software Availability:** Apr-2026

## Platform Notes (Continued)

```

nvmf-autoconnect postfix purge-kernels rollback rsyslog sep5 smartd sshd systemd-pstore
wicked wickedd-auto4 wickedd-dhcp4 wickedd-dhcp6 wickedd-nanny
enabled-runtime systemd-remount-fs
disabled autofs autoyast-initscripts blk-availability boot-sysctl ca-certificates chrony-wait
chronyd console-getty cups cups-browsed debug-shell ebttables exchange-bmc-os-info
firewalld fsidd gpm grub2-once haveged ipmi ipmievd issue-add-ssh-keys kexec-load lunmask
man-db-create multipathd nfs nfs-blkmap rpcbind rpmconfigcheck rsyncd serial-getty@
smartd_generate_opts snmpd snmptrapd sysstat systemd-boot-check-no-failures
systemd-confext systemd-network-generator systemd-sysext systemd-time-wait-sync
systemd-timesyncd vncserver@
indirect systemd-userdbd wickedd

```

### 13. Linux kernel boot-time arguments, from /proc/cmdline

```

BOOT_IMAGE=/boot/vmlinuz-6.4.0-150700.51-default
root=UUID=6490486a-f020-45c4-b83e-03e98fc56a3b
splash=silent
mitigations=auto
quiet
security=apparmor

```

### 14. cpupower frequency-info

```

analyzing CPU 221:
  current policy: frequency should be within 800 MHz and 3.80 GHz.
                  The governor "powersave" may decide which speed to use
                  within this range.

  boost state support:
    Supported: yes
    Active: yes

```

### 15. sysctl

```

kernel.numa_balancing          1
kernel.randomize_va_space      2
vm.compaction_proactiveness    20
vm.dirty_background_bytes      0
vm.dirty_background_ratio      10
vm.dirty_bytes                 0
vm.dirty_expire_centisecs      3000
vm.dirty_ratio                 20
vm.dirty_writeback_centisecs   500
vm.dirtytime_expire_seconds    43200
vm.extfrag_threshold           500
vm.min_unmapped_ratio          1
vm.nr_hugepages                0
vm.nr_hugepages_mempolicy      0

```

(Continued on next page)



# SPEC CPU®2026 Floating Point Rate Result

Copyright 2026 Standard Performance Evaluation Corporation

**Fsas Technologies Inc.**

(Test Sponsor: Fujitsu)

PRIMERGY RX2540 M8, Intel Xeon 6787P,  
2.00GHz

SPECrate®2026\_fp\_base = 730

SPECrate®2026\_fp\_peak = Not Run

**CPU2026 License:** 19

**Test Sponsor:** Fujitsu

**Tested by:** Fsas Technologies Inc.

**Test Date:** May-2026

**Hardware Availability:** Oct-2025

**Software Availability:** Apr-2026

## Platform Notes (Continued)

```

vm.nr_overcommit_hugepages      0
vm.swappiness                    60
vm.watermark_boost_factor       15000
vm.watermark_scale_factor       10
vm.zone_reclaim_mode            0

```

```

-----
16. /sys/kernel/mm/transparent_hugepage
defrag          always defer+madvice [madvice] never
enabled         [always] madvice never
hpage_pmd_size 2097152
shmem_enabled   always within_size advise [never] deny force

```

```

-----
17. /sys/kernel/mm/transparent_hugepage/khugepaged
alloc_sleep_millisecs  60000
defrag                  1
max_ptes_none          511
max_ptes_shared        256
max_ptes_swap          64
pages_to_scan          4096
scan_sleep_millisecs   10000

```

```

-----
18. OS release
From /etc/*-release /etc/*-version
os-release SUSE Linux Enterprise Server 15 SP7

```

```

-----
19. Disk information
SPEC is set to: /home/Benchmark/cpu2026
Filesystem      Type      Size  Used Avail Use% Mounted on
/dev/nvme1nlp2 btrfs    1.9T  155G  1.8T   9% /home

```

```

-----
20. /sys/devices/virtual/dmi/id
Vendor:          Fsas Technologies
Product:         PRIMERGY RX2540 M8
Product Family: SERVER
Serial:          xxxxxxxxxxxx

```

```

-----
21. dmidecode
Additional information from dmidecode 3.6 follows.  WARNING: Use caution when you interpret this section.
The 'dmidecode' program reads system data which is "intended to allow hardware to be accurately
determined", but the intent may not be met, as there are frequent changes to hardware, firmware, and the
"DMTF SMBIOS" standard.

```

(Continued on next page)



# SPEC CPU®2026 Floating Point Rate Result

Copyright 2026 Standard Performance Evaluation Corporation

**Fsas Technologies Inc.**

(Test Sponsor: Fujitsu)

PRIMERGY RX2540 M8, Intel Xeon 6787P,  
2.00GHz

SPECrate®2026\_fp\_base = 730

SPECrate®2026\_fp\_peak = Not Run

**CPU2026 License:** 19

**Test Sponsor:** Fujitsu

**Tested by:** Fsas Technologies Inc.

**Test Date:** May-2026

**Hardware Availability:** Oct-2025

**Software Availability:** Apr-2026

## Platform Notes (Continued)

Memory:

16x Samsung M327R8GA0EB0-CLVXB 64 GB 2 rank 8800, configured at 8000

### 22. BIOS

(This section combines info from /sys/devices and dmidecode.)

BIOS Vendor: Fsas Technologies  
BIOS Version: V1.0.0.0 R1.5.0 for D4135-Alx  
BIOS Date: 03/06/2026  
BIOS Revision: 1.5  
Firmware Revision: 3.12

## Compiler Version Notes

=====  
C | 782.lbm\_r(base)  
-----

Intel(R) oneAPI DPC++/C++ Compiler for applications running on Intel(R) 64,  
Version 2026.0.0 Build 20260331  
Copyright (C) 1985-2026 Intel Corporation. All rights reserved.  
-----

=====  
C++ | 731.astcenc\_r(base) 736.ocio\_r(base) 748.flightdm\_r(base)  
766.femflow\_r(base) 767.nest\_r(base) 772.marian\_r(base)

Intel(R) oneAPI DPC++/C++ Compiler for applications running on Intel(R) 64,  
Version 2026.0.0 Build 20260331  
Copyright (C) 1985-2026 Intel Corporation. All rights reserved.  
-----

=====  
C++, C | 709.cactus\_r(base) 737.gmsh\_r(base)  
-----

Intel(R) oneAPI DPC++/C++ Compiler for applications running on Intel(R) 64,  
Version 2026.0.0 Build 20260331  
Copyright (C) 1985-2026 Intel Corporation. All rights reserved.  
-----

=====  
Fortran | 722.palm\_r(base) 749.fotonik3d\_r(base) 765.roms\_r(base)  
-----

Intel(R) Fortran Compiler for applications running on Intel(R) 64, Version  
2026.0.0 Build 20260331  
Copyright (C) 1985-2026 Intel Corporation. All rights reserved.

(Continued on next page)



# SPEC CPU®2026 Floating Point Rate Result

Copyright 2026 Standard Performance Evaluation Corporation

**Fsas Technologies Inc.**

(Test Sponsor: Fujitsu)

PRIMERGY RX2540 M8, Intel Xeon 6787P,  
2.00GHz

SPECrate®2026\_fp\_base = 730

SPECrate®2026\_fp\_peak = Not Run

**CPU2026 License:** 19

**Test Sponsor:** Fujitsu

**Tested by:** Fsas Technologies Inc.

**Test Date:** May-2026

**Hardware Availability:** Oct-2025

**Software Availability:** Apr-2026

## Compiler Version Notes (Continued)

-----

## Base Compiler Invocation

C benchmarks:

icx

C++ benchmarks:

icpx

Fortran benchmarks:

ifx

Benchmarks using both C and C++:

icpx icx

## Base Portability Flags

737.gmsh\_r: -fno-associative-math

## Base Optimization Flags

C benchmarks:

-m64 -std=c18 -Wl,-z,muldefs -Wl,-plugin-opt=-inline-threshold=1500  
-xgraniterapids -mprefer-vector-width=512 -O3 -ffp-model=fast -flto  
-mfpmath=sse -funroll-loops -qopt-mem-layout-trans=4  
-L/usr/local/jemalloc-5.3.0/lib -ljemalloc

C++ benchmarks:

-m64 -std=c++17 -Wl,-z,muldefs -Wl,-plugin-opt=-inline-threshold=1500  
-xgraniterapids -mprefer-vector-width=512 -O3 -ffp-model=fast -flto  
-mfpmath=sse -funroll-loops -qopt-mem-layout-trans=4  
-L/usr/local/jemalloc-5.3.0/lib -ljemalloc

Fortran benchmarks:

-m64 -stand f18 -Wl,-z,muldefs -Wl,-plugin-opt=-inline-threshold=1500  
-xgraniterapids -mprefer-vector-width=512 -O3 -ffp-model=fast -flto  
-mfpmath=sse -funroll-loops -qopt-mem-layout-trans=4  
-nostandard-realloc-lhs -align array32byte -auto  
-L/usr/local/jemalloc-5.3.0/lib -ljemalloc

(Continued on next page)



# SPEC CPU®2026 Floating Point Rate Result

Copyright 2026 Standard Performance Evaluation Corporation

**Fsas Technologies Inc.**

(Test Sponsor: Fujitsu)

PRIMERGY RX2540 M8, Intel Xeon 6787P,  
2.00GHz

SPECrate®2026\_fp\_base = 730

SPECrate®2026\_fp\_peak = Not Run

**CPU2026 License:** 19

**Test Sponsor:** Fujitsu

**Tested by:** Fsas Technologies Inc.

**Test Date:** May-2026

**Hardware Availability:** Oct-2025

**Software Availability:** Apr-2026

## Base Optimization Flags (Continued)

Benchmarks using both C and C++:

```
-m64 -std=c++17 -std=c18 -Wl,-z,muldefs
-Wl,-plugin-opt=-inline-threshold=1500 -xgraniterapids
-mprefer-vector-width=512 -O3 -ffp-model=fast -flto -mfpmath=sse
-funroll-loops -qopt-mem-layout-trans=4 -L/usr/local/jemalloc-5.3.0/lib
-ljemalloc
```

The flags files that were used to format this result can be browsed at

<http://www.spec.org/cpu2026/results/flags/Intel-ic2025-official-linux64.html>

<http://www.spec.org/cpu2026/results/flags/Fsas-Platform-Settings-V1.0-GNR-RevB.html>

You can also download the XML flags sources by saving the following links:

<http://www.spec.org/cpu2026/results/flags/Intel-ic2025-official-linux64.xml>

<http://www.spec.org/cpu2026/results/flags/Fsas-Platform-Settings-V1.0-GNR-RevB.xml>

SPEC CPU and SPECrate are registered trademarks of the Standard Performance Evaluation Corporation. All other brand and product names appearing in this result are trademarks or registered trademarks of their respective holders.

For questions about this result, please contact the tester. For other inquiries, please contact [info@spec.org](mailto:info@spec.org).

Tested with SPEC CPU®2026 v1.0.1 on 2026-05-19 19:03:59-0400.

Report generated on 2026-06-16 17:18:51 by CPU2026 PDF formatter (unknown).

Originally published on 2026-06-16.