



SPEC CPU®2026 Floating Point Rate Result

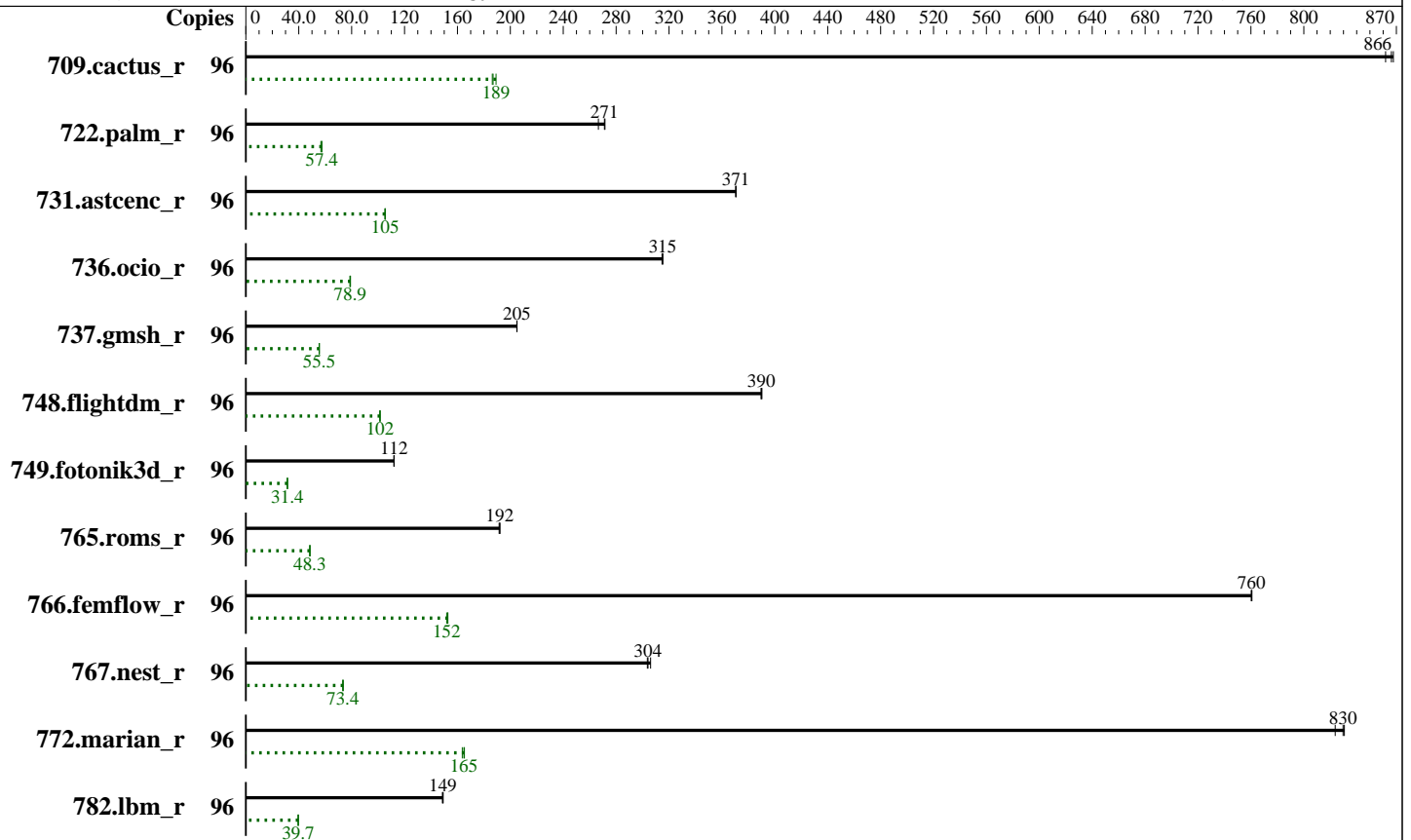
Copyright 2026 Standard Performance Evaluation Corporation

Lenovo Global Technology ThinkSystem SR655 V3 (2.60 GHz, AMD EPYC 9655)

SPECrate®2026_fp_base = 324
SPECrate®2026_fp_energy_base = 78.7
SPECrate®2026_fp_peak = 324
SPECrate®2026_fp_energy_peak = 78.7

CPU2026 License: 9017
Test Sponsor: Lenovo Global Technology
Tested by: Lenovo Global Technology

Test Date: Feb-2026
Hardware Availability: Jul-2025
Software Availability: Jan-2026



Hardware

CPU Name: AMD EPYC 9655
Max MHz: 4500
Nominal: 2600
Enabled: 96 cores, 1 chip
Orderable: 1 chip
Cache L1: 32 KB I + 48 KB D on chip per core
L2: 1 MB I+D on chip per core
L3: 384 MB I+D on chip per chip,
32 MB shared / 8 cores
Other: None
Memory: 384 GB (12 x 32 GB 2Rx8 PC5-6400B-R, running at 4800)
Storage: 1 x 480 GB SATA SSD
Cooling: Air
Other: None

Software

OS: SUSE Linux Enterprise Server 15 SP6
Kernel 6.4.0-150600.21-default
Compiler: C/C++/Fortran: Version 5.1.0 of AOCC
Compiler Category: Vendor
Firmware: Lenovo BIOS Version KAE141G 5.81 released Jan-2026
File System: xfs
System State: Run level 3 (multi-user)
Base Pointers: 64-bit
Peak Pointers: 64-bit
Other: None
Power Management: BIOS and OS set to balance power and performance



SPEC CPU®2026 Floating Point Rate Result

Copyright 2026 Standard Performance Evaluation Corporation

Lenovo Global Technology ThinkSystem SR655 V3 (2.60 GHz, AMD EPYC 9655)

SPECrate®2026_fp_base = 324
SPECrate®2026_fp_energy_base = 78.7
SPECrate®2026_fp_peak = 324
SPECrate®2026_fp_energy_peak = 78.7

CPU2026 License: 9017
Test Sponsor: Lenovo Global Technology
Tested by: Lenovo Global Technology

Test Date: Feb-2026
Hardware Availability: Jul-2025
Software Availability: Jan-2026

Power

Max. Power (W): 477.8
Idle Power (W): 89.69
Min. Temperature (C): 21.94
Elevation (m): 43
Line Standard: 220 V / 50 Hz / 1 phase / 3 wires
Provisioning: Line-powered

Power Settings

Management FW: Version 56.20 of KAX3670
Memory Mode: Normal

Power-Relevant Hardware

Power Supply: 1 x 1100 W (non-redundant)
Details: ThinkSystem 1100W 230V Titanium Power Supply 4P57A72666
Backplane: 8 x 2.5-inch HDD back plane
Other Storage: None
Storage Model #: 4XB7A17107
NICs Installed: 1 x ThinkSystem Ethernet 4-port Adaptor @ 1 Gb
NICs Enabled (FW/OS): 4 / 1
NICs Connected/Speed: 1 @ 1 Gb
Other HW Model #: 6 x Performance fans

Power Analyzer

Power Analyzer: WIN:9888
Hardware Vendor: YOKOGAWA, Inc.
Model: YokogawaWT310E
Serial Number: C3UD17025E
Input Connection: Default
Metrology Institute: CNAS
Calibration By: CEPREI Calibration and Testing Centre
Calibration Label: 1GA25011731-0006
Calibration Date: 16-Sep-2025
PTDaemon® Version: 1.11.1 (462c978e; 2024-09-07)
Setup Description: Connected to PSU1
Current Ranges Used: 5A
Voltage Range Used: 300V

Temperature Meter

Temperature Meter: WIN:9889
Hardware Vendor: Digi International, Inc.
Model: DigiWATCHPORT_H
Serial Number: W63390099
Input Connection: USB
PTDaemon Version: 1.11.1 (462c978e; 2024-09-07)
Setup Description: 50 mm in front of SUT main intake

Base Results Table

Benchmark	Copies	Seconds	Ratio	Energy (kJ)	Energy Ratio	Average Power	Maximum Power	Seconds	Ratio	Energy (kJ)	Energy Ratio	Average Power	Maximum Power	Seconds	Ratio	Energy (kJ)	Energy Ratio	Average Power	Maximum Power
709.cactus_r	96	95.1	866	37.0	189	389	406	95.6	862	37.4	187	392	405	94.9	868	37.6	186	396	405
722.palm_r	96	475	267	190	56.7	399	408	467	271	187	57.4	401	408	467	272	187	57.4	402	409
731.ascenc_r	96	218	370	63.9	105	294	312	218	371	63.8	105	293	313	218	371	63.8	105	293	315
736.ocio_r	96	266	315	89.1	78.9	334	388	267	315	89.3	78.7	335	388	266	315	88.8	79.1	333	388
737.gmsh_r	96	215	205	66.6	55.5	310	350	215	205	66.7	55.4	310	348	215	205	66.4	55.6	309	347
748.flightdm_r	96	176	390	56.9	102	322	330	176	390	57.0	101	323	330	176	390	56.9	101	323	331
749.fotonik3d_r	96	990	112	301	31.5	304	310	991	112	302	31.4	305	311	990	112	301	31.4	304	310
765.roms_r	96	790	192	273	48.5	345	359	787	192	274	48.3	348	358	787	192	273	48.5	346	358
766.femflow_r	96	185	761	78.1	153	422	437	185	760	78.6	152	424	435	185	760	78.2	153	422	437
767.nest_r	96	250	304	86.4	73.4	345	388	249	306	86.1	73.6	346	389	251	304	86.5	73.3	345	389

Table continues on next page. Results appear in the order in which they were run. Bold underlined text indicates a median measurement.



SPEC CPU®2026 Floating Point Rate Result

Copyright 2026 Standard Performance Evaluation Corporation

Lenovo Global Technology

ThinkSystem SR655 V3

(2.60 GHz, AMD EPYC 9655)

SPECrate®2026_fp_base = 324
SPECrate®2026_fp_energy_base = 78.7
SPECrate®2026_fp_peak = 324
SPECrate®2026_fp_energy_peak = 78.7

CPU2026 License: 9017
Test Sponsor: Lenovo Global Technology
Tested by: Lenovo Global Technology

Test Date: Feb-2026
Hardware Availability: Jul-2025
Software Availability: Jan-2026

Base Results Table (Continued)

Benchmark	Copies	Seconds	Ratio	Energy (kJ)	Energy Ratio	Average Power	Maximum Power	Seconds	Ratio	Energy (kJ)	Energy Ratio	Average Power	Maximum Power	Seconds	Ratio	Energy (kJ)	Energy Ratio	Average Power	Maximum Power
772.marian_r	96	182	831	77.0	165	422	471	184	824	77.8	164	423	478	183	830	77.2	165	423	467
782.lbm_r	96	369	149	123	39.7	334	339	370	149	124	39.5	335	340	369	149	124	39.6	335	339

SPECrate®2026_fp_base = 324

SPECrate®2026_fp_energy_base = 78.7

Results appear in the order in which they were run. Bold underlined text indicates a median measurement.

Peak Results Table

Benchmark	Copies	Seconds	Ratio	Energy (kJ)	Energy Ratio	Average Power	Maximum Power	Seconds	Ratio	Energy (kJ)	Energy Ratio	Average Power	Maximum Power	Seconds	Ratio	Energy (kJ)	Energy Ratio	Average Power	Maximum Power
709.cactus_r	96	95.1	866	37.0	189	389	406	95.6	862	37.4	187	392	405	94.9	868	37.6	186	396	405
722.palm_r	96	475	267	190	56.7	399	408	467	271	187	57.4	401	408	467	272	187	57.4	402	409
731.ascenc_r	96	218	370	63.9	105	294	312	218	371	63.8	105	293	313	218	371	63.8	105	293	315
736.ocio_r	96	266	315	89.1	78.9	334	388	267	315	89.3	78.7	335	388	266	315	88.8	79.1	333	388
737.gmsr_r	96	215	205	66.6	55.5	310	350	215	205	66.7	55.4	310	348	215	205	66.4	55.6	309	347
748.flightdm_r	96	176	390	56.9	102	322	330	176	390	57.0	101	323	330	176	390	56.9	101	323	331
749.fotonik3d_r	96	990	112	301	31.5	304	310	991	112	302	31.4	305	311	990	112	301	31.4	304	310
765.roms_r	96	790	192	273	48.5	345	359	787	192	274	48.3	348	358	787	192	273	48.5	346	358
766.femflow_r	96	185	761	78.1	153	422	437	185	760	78.6	152	424	435	185	760	78.2	153	422	437
767.nest_r	96	250	304	86.4	73.4	345	388	249	306	86.1	73.6	346	389	251	304	86.5	73.3	345	389
772.marian_r	96	182	831	77.0	165	422	471	184	824	77.8	164	423	478	183	830	77.2	165	423	467
782.lbm_r	96	369	149	123	39.7	334	339	370	149	124	39.5	335	340	369	149	124	39.6	335	339

SPECrate®2026_fp_peak = 324

SPECrate®2026_fp_energy_peak = 78.7

Results appear in the order in which they were run. Bold underlined text indicates a median measurement.

Compiler Notes

The AMD64 AOCC Compiler Suite is available at <http://developer.amd.com/amd-aocc/>

Submit Notes

The config file option 'submit' was used.
'numactl' was used to bind copies to the cores.
See the configuration file for details.

Operating System Notes

'ulimit -s unlimited' was used to set environment stack size limit
'ulimit -l 2097152' was used to set environment locked pages in memory limit

runcpu command invoked through numactl i.e.:
numactl --interleave=all runcpu <etc>

(Continued on next page)



SPEC CPU®2026 Floating Point Rate Result

Copyright 2026 Standard Performance Evaluation Corporation

Lenovo Global Technology
ThinkSystem SR655 V3
(2.60 GHz, AMD EPYC 9655)

SPECrate®2026_fp_base = 324
SPECrate®2026_fp_energy_base = 78.7
SPECrate®2026_fp_peak = 324
SPECrate®2026_fp_energy_peak = 78.7

CPU2026 License: 9017
Test Sponsor: Lenovo Global Technology
Tested by: Lenovo Global Technology

Test Date: Feb-2026
Hardware Availability: Jul-2025
Software Availability: Jan-2026

Operating System Notes (Continued)

To limit dirty cache to 8% of memory, 'sysctl -w vm.dirty_ratio=8' run as root.
To limit swap usage to minimum necessary, 'sysctl -w vm.swappiness=1' run as root.
To free node-local memory and avoid remote memory usage,
'sysctl -w vm.zone_reclaim_mode=1' run as root.
To clear filesystem caches, 'sync; sysctl -w vm.drop_caches=3' run as root.
To disable address space layout randomization (ASLR) to reduce run-to-run
variability, 'sysctl -w kernel.randomize_va_space=0' run as root.
To enable Transparent Hugepages (THP) for all allocations,
'echo always > /sys/kernel/mm/transparent_hugepage/enabled' and
'echo always > /sys/kernel/mm/transparent_hugepage/defrag' run as root.

Environment Variables Notes

Environment variables set by runcpu before the start of the run:
LD_LIBRARY_PATH =
"/home/cpu2026-0.902.0-amd_aocc510_znver5_A1/amd_rate_aocc510_znver5_A_1
ib/lib:/home/cpu2026-0.902.0-amd_aocc510_znver5_A1/amd_rate_aocc510_znve
r5_A_lib/lib32:"
MALLOC_CONF = "retain:true"

General Notes

Binaries were compiled on a system with 2x AMD EPYC Venice256 CPU + 2TiB Memory using Ubuntu 24.04

Platform Notes

BIOS configuration:
Choose Operating Mode set to Custom Mode
Core Performance Boost set to Disabled
NUMA Nodes per Socket set to NPS4
Memory Speed set to Minimum
BoostFmax set to Manual
BoostFmax Manual set to 2450
L1 Stride Prefetcher set to Disabled
SMT Mode set to Disabled

Sysinfo program /home/cpu2026-0.902.0-amd_aocc510_znver5_A1/bin/sysinfo
Rev: 069f95da7e7f5d81b2ce48a82150e54f
running on localhost Sun Feb 1 21:05:05 2026

(Continued on next page)



SPEC CPU®2026 Floating Point Rate Result

Copyright 2026 Standard Performance Evaluation Corporation

Lenovo Global Technology
ThinkSystem SR655 V3
(2.60 GHz, AMD EPYC 9655)

SPECrate®2026_fp_base = 324
SPECrate®2026_fp_energy_base = 78.7
SPECrate®2026_fp_peak = 324
SPECrate®2026_fp_energy_peak = 78.7

CPU2026 License: 9017
Test Sponsor: Lenovo Global Technology
Tested by: Lenovo Global Technology

Test Date: Feb-2026
Hardware Availability: Jul-2025
Software Availability: Jan-2026

Platform Notes (Continued)

SUT (System Under Test) info as seen by some common utilities.

Table of contents

1. `uname -srvm`
2. `w`
3. Username
4. `ulimit -a`
5. `sysinfo process ancestry`
6. `/proc/cpuinfo`
7. `lscpu`
8. `numactl --hardware`
9. `/proc/meminfo`
10. `who -r`
11. Systemd service manager version: `systemd 254 (254.10+suse.84.ge8d77af424)`
12. Services, from `systemctl list-unit-files`
13. Linux kernel boot-time arguments, from `/proc/cmdline`
14. `cpupower frequency-info`
15. `sysctl`
16. `/sys/kernel/mm/transparent_hugepage`
17. `/sys/kernel/mm/transparent_hugepage/khugepaged`
18. OS release
19. Disk information
20. `/sys/devices/virtual/dmi/id`
21. `dmidecode`
22. BIOS

1. `uname -srvm`
`Linux 6.4.0-150600.21-default #1 SMP PREEMPT_DYNAMIC Thu May 16 11:09:22 UTC 2024 (36c1e09) x86_64`

2. `w`
`21:05:05 up 4 min, 1 user, load average: 0.01, 0.09, 0.05`
`USER TTY FROM LOGIN@ IDLE JCPU PCPU WHAT`

3. Username
`From environment variable $USER: root`

4. `ulimit -a`
`core file size (blocks, -c) unlimited`

(Continued on next page)



SPEC CPU®2026 Floating Point Rate Result

Copyright 2026 Standard Performance Evaluation Corporation

Lenovo Global Technology
ThinkSystem SR655 V3
(2.60 GHz, AMD EPYC 9655)

SPECrate®2026_fp_base = 324
SPECrate®2026_fp_energy_base = 78.7
SPECrate®2026_fp_peak = 324
SPECrate®2026_fp_energy_peak = 78.7

CPU2026 License: 9017
Test Sponsor: Lenovo Global Technology
Tested by: Lenovo Global Technology

Test Date: Feb-2026
Hardware Availability: Jul-2025
Software Availability: Jan-2026

Platform Notes (Continued)

data seg size (kbytes, -d) unlimited
scheduling priority (-e) 0
file size (blocks, -f) unlimited
pending signals (-i) 1545958
max locked memory (kbytes, -l) 2097152
max memory size (kbytes, -m) unlimited
open files (-n) 1024
pipe size (512 bytes, -p) 8
POSIX message queues (bytes, -q) 819200
real-time priority (-r) 0
stack size (kbytes, -s) unlimited
cpu time (seconds, -t) unlimited
max user processes (-u) 1545958
virtual memory (kbytes, -v) unlimited
file locks (-x) unlimited

5. sysinfo process ancestry

```
/usr/lib/systemd/systemd --switched-root --system --deserialize=42
sshd: /usr/sbin/sshd -D [listener] 0 of 10-100 startups
sshd: root [priv]
sshd: root@notty
/bin/bash ./02.remote_local_SPECcpu_1.02.sh
/bin/bash ./Run023-compliant-amd-ratefp_base.sh
python3 ./run_amd_rate_aocc510_znver5_A1.py
/bin/bash ./amd_rate_aocc510_znver5_A1.sh
runcpu --power --config amd_rate_aocc510_znver5_A1.cfg --tune base --reportable --iterations 3 fprate
runcpu --power --configfile amd_rate_aocc510_znver5_A1.cfg --tune base --reportable --iterations 3 --runmode
rate --tune base --size test:train:refrate fprate --nopreenv --note-preenv --logfile
$SPEC/tmp/CPU2026.022/templogs/preenv.fprate.022.0.log --lognum 022.0 --from_runcpu 2
specperl $SPEC/bin/sysinfo
$SPEC = /home/cpu2026-0.902.0-amd_aocc510_znver5_A1
```

6. /proc/cpuinfo

```
model name      : AMD EPYC 9655 96-Core Processor
vendor_id      : AuthenticAMD
cpu family     : 26
model          : 2
stepping       : 1
microcode      : 0xb002152
bugs           : sysret_ss_attrs spectre_v1 spectre_v2 spec_store_bypass
TLB size      : 192 4K pages
cpu cores     : 96
siblings      : 96
```

(Continued on next page)



SPEC CPU®2026 Floating Point Rate Result

Copyright 2026 Standard Performance Evaluation Corporation

Lenovo Global Technology ThinkSystem SR655 V3 (2.60 GHz, AMD EPYC 9655)

SPECrate®2026_fp_base = 324
SPECrate®2026_fp_energy_base = 78.7
SPECrate®2026_fp_peak = 324
SPECrate®2026_fp_energy_peak = 78.7

CPU2026 License: 9017
Test Sponsor: Lenovo Global Technology
Tested by: Lenovo Global Technology

Test Date: Feb-2026
Hardware Availability: Jul-2025
Software Availability: Jan-2026

Platform Notes (Continued)

1 physical ids (chips)
96 processors (hardware threads)
physical id 0: core ids 0-7,16-23,32-39,48-55,64-71,80-87,96-103,112-119,128-135,144-151,160-167,176-183
physical id 0: apicids 0-7,16-23,32-39,48-55,64-71,80-87,96-103,112-119,128-135,144-151,160-167,176-183
Caution: /proc/cpuinfo data regarding chips, cores, and threads is not necessarily reliable, especially for virtualized systems. Use the above data carefully.

7. lscpu

From lscpu from util-linux 2.39.3:

```
Architecture:                x86_64
CPU op-mode(s):              32-bit, 64-bit
Address sizes:                52 bits physical, 57 bits virtual
Byte Order:                  Little Endian
CPU(s):                      96
On-line CPU(s) list:         0-95
Vendor ID:                   AuthenticAMD
BIOS Vendor ID:              Advanced Micro Devices, Inc.
Model name:                  AMD EPYC 9655 96-Core Processor
BIOS Model name:             AMD EPYC 9655 96-Core Processor           Unknown CPU @ 2.6GHz
BIOS CPU family:             107
CPU family:                   26
Model:                        2
Thread(s) per core:          1
Core(s) per socket:          96
Socket(s):                    1
Stepping:                     1
CPU(s) scaling MHz:          34%
CPU max MHz:                  4509.3750
CPU min MHz:                  1500.0000
BogoMIPS:                     5191.97
Flags:                        fpu vme de pse tsc msr pae mce cx8 apic sep mtrr pge mca cmov pat
                               pse36 clflush mmx fxsr sse sse2 ht syscall nx mmxext fxsr_opt pdpe1gb
                               rdtscp lm constant_tsc rep_good amd_lbr_v2 nopl nonstop_tsc cpuid
                               extd_apicid aperfmperf rapl pni pclmulqdq monitor ssse3 fma cx16 pcid
                               sse4_1 sse4_2 x2apic movbe popcnt aes xsave avx f16c rdrand lahf_lm
                               cmp_legacy svm extapic cr8_legacy abm sse4a misalignsse 3dnowprefetch
                               oswb ibs skinit wdt tce topoext perfctr_core perfctr_nb bpext
                               perfctr_llc mwaitx cat_l3 cdp_l3 hw_pstate ssbd mba perfmon_v2 ibrs
                               ibpb stibp ibrs_enhanced vmmcall fsgsbase tsc_adjust bmi1 avx2 smep
                               bmi2 erms invpcid cqm rdt_a avx512f avx512dq rdseed adx smap
                               avx512ifma clflushopt clwb avx512cd sha_ni avx512bw avx512vl xsaveopt
                               xsavec xgetbv1 xsaves cqm_llc cqm_occup_llc cqm_mbm_total
                               cqm_mbm_local user_shstk avx_vnni avx512_bf16 clzero irperf
```

(Continued on next page)



SPEC CPU®2026 Floating Point Rate Result

Copyright 2026 Standard Performance Evaluation Corporation

Lenovo Global Technology ThinkSystem SR655 V3 (2.60 GHz, AMD EPYC 9655)

SPECrate®2026_fp_base = 324
SPECrate®2026_fp_energy_base = 78.7
SPECrate®2026_fp_peak = 324
SPECrate®2026_fp_energy_peak = 78.7

CPU2026 License: 9017
Test Sponsor: Lenovo Global Technology
Tested by: Lenovo Global Technology

Test Date: Feb-2026
Hardware Availability: Jul-2025
Software Availability: Jan-2026

Platform Notes (Continued)

xsaveerptr rdpru wbnoinvd amd_ppin cppc arat npt lbrv svm_lock
nrip_save tsc_scale vmcb_clean flushbyasid decodeassists pausefilter
pfthreshold avic v_vmsave_vmload vgif x2avic v_spec_ctrl vnmi
avx512vbmi umip pku ospke avx512_vbmi2 gfni vaes vpclmulqdq
avx512_vnmi avx512_bitalg avx512_vpopcntdq la57 rdpid bus_lock_detect
movdiri movdir64b overflow_recov succor smca fsmr avx512_vp2intersect
flush_llid debug_swap

Virtualization: AMD-V
L1d cache: 4.5 MiB (96 instances)
L1i cache: 3 MiB (96 instances)
L2 cache: 96 MiB (96 instances)
L3 cache: 384 MiB (12 instances)
NUMA node(s): 4
NUMA node0 CPU(s): 0-23
NUMA node1 CPU(s): 24-47
NUMA node2 CPU(s): 48-71
NUMA node3 CPU(s): 72-95
Vulnerability Gather data sampling: Not affected
Vulnerability Itlb multihit: Not affected
Vulnerability L1tf: Not affected
Vulnerability Mds: Not affected
Vulnerability Meltdown: Not affected
Vulnerability Mmio stale data: Not affected
Vulnerability Reg file data sampling: Not affected
Vulnerability Retbleed: Not affected
Vulnerability Spec rstack overflow: Not affected
Vulnerability Spec store bypass: Mitigation; Speculative Store Bypass disabled via prctl
Vulnerability Spectre v1: Mitigation; usercopy/swapgs barriers and __user pointer sanitization
Vulnerability Spectre v2: Mitigation; Enhanced / Automatic IBRS; IBPB conditional; STIBP disabled; RSB filling; PBRSE-eIBRS Not affected; BHI Not affected
Vulnerability Srbds: Not affected
Vulnerability Tsx async abort: Not affected

From lscpu --cache:

NAME	ONE-SIZE	ALL-SIZE	WAYS	TYPE	LEVEL	SETS	PHY-LINE	COHERENCY-SIZE
L1d	48K	4.5M	12	Data	1	64	1	64
L1i	32K	3M	8	Instruction	1	64	1	64
L2	1M	96M	16	Unified	2	1024	1	64
L3	32M	384M	16	Unified	3	32768	1	64

8. numactl --hardware

NOTE: a numactl 'node' might or might not correspond to a physical chip.

available: 4 nodes (0-3)

node 0 cpus: 0-23

(Continued on next page)



SPEC CPU®2026 Floating Point Rate Result

Copyright 2026 Standard Performance Evaluation Corporation

Lenovo Global Technology
ThinkSystem SR655 V3
(2.60 GHz, AMD EPYC 9655)

SPECrate®2026_fp_base = 324
SPECrate®2026_fp_energy_base = 78.7
SPECrate®2026_fp_peak = 324
SPECrate®2026_fp_energy_peak = 78.7

CPU2026 License: 9017
Test Sponsor: Lenovo Global Technology
Tested by: Lenovo Global Technology

Test Date: Feb-2026
Hardware Availability: Jul-2025
Software Availability: Jan-2026

Platform Notes (Continued)

```
node 0 size: 96345 MB
node 0 free: 95842 MB
node 1 cpus: 24-47
node 1 size: 96761 MB
node 1 free: 96424 MB
node 2 cpus: 48-71
node 2 size: 96761 MB
node 2 free: 96400 MB
node 3 cpus: 72-95
node 3 size: 96647 MB
node 3 free: 96288 MB
node distances:
node  0  1  2  3
  0:  10 12 12 12
  1:  12 10 12 12
  2:  12 12 10 12
  3:  12 12 12 10
```

9. /proc/meminfo
MemTotal: 395792092 kB

10. who -r
run-level 3 Feb 1 21:01

11. Systemd service manager version: systemd 254 (254.10+suse.84.ge8d77af424)
Default Target Status
multi-user running

12. Services, from systemctl list-unit-files
STATE UNIT FILES
enabled YaST2-Firstboot YaST2-Second-Stage apparmor auditd cron getty@ irqbalance issue-generator
kbdsettings klog lvm2-monitor nscd postfix purge-kernels rollback rsyslog smartd sshd
systemd-pstore wickedd wickedd-auto4 wickedd-dhcp4 wickedd-dhcp6 wickedd-nanny
enabled-runtime systemd-remount-fs
disabled autofs autoyast-initscripts blk-availability boot-sysctl ca-certificates chrony-wait
chronyd console-getty cups cups-browsed debug-shell ebttables exchange-bmc-os-info
firewalld fsidd gpm grub2-once haveged hwloc-dump-hwdata ipmi ipmievdev issue-add-ssh-keys
kexec-load lunmask man-db-create multipathd nfs nfs-blkmap rpcbind rpmconfigcheck rsyncd
serial-getty@ smartd_generate_opts snmpd snmptrapd systemd-boot-check-no-failures
systemd-confext systemd-network-generator systemd-sysext systemd-time-wait-sync
systemd-timesyncd

(Continued on next page)



SPEC CPU®2026 Floating Point Rate Result

Copyright 2026 Standard Performance Evaluation Corporation

Lenovo Global Technology
ThinkSystem SR655 V3
(2.60 GHz, AMD EPYC 9655)

SPECrate®2026_fp_base = 324
SPECrate®2026_fp_energy_base = 78.7
SPECrate®2026_fp_peak = 324
SPECrate®2026_fp_energy_peak = 78.7

CPU2026 License: 9017
Test Sponsor: Lenovo Global Technology
Tested by: Lenovo Global Technology

Test Date: Feb-2026
Hardware Availability: Jul-2025
Software Availability: Jan-2026

Platform Notes (Continued)

generated ntp_sync
indirect systemd-userdbd wickedd

13. Linux kernel boot-time arguments, from /proc/cmdline
BOOT_IMAGE=/boot/vmlinuz-6.4.0-150600.21-default
root=UUID=d6bdf3a8-2c29-4379-81b5-741d24d52760
splash=silent
quiet
security=apparmor
mitigations=auto

14. cpupower frequency-info
analyzing CPU 15:
current policy: frequency should be within 1.50 GHz and 2.60 GHz.
The governor "ondemand" may decide which speed to use
within this range.

boost state support:
Supported: no
Active: no

15. sysctl
kernel.numa_balancing 1
kernel.randomize_va_space 0
vm.compaction_proactiveness 20
vm.dirty_background_bytes 0
vm.dirty_background_ratio 10
vm.dirty_bytes 0
vm.dirty_expire_centisecs 3000
vm.dirty_ratio 8
vm.dirty_writeback_centisecs 500
vm.dirtytime_expire_seconds 43200
vm.extfrag_threshold 500
vm.min_unmapped_ratio 1
vm.nr_hugepages 0
vm.nr_hugepages_mempolicy 0
vm.nr_overcommit_hugepages 0
vm.swappiness 1
vm.watermark_boost_factor 15000
vm.watermark_scale_factor 10
vm.zone_reclaim_mode 1

(Continued on next page)



SPEC CPU®2026 Floating Point Rate Result

Copyright 2026 Standard Performance Evaluation Corporation

Lenovo Global Technology
ThinkSystem SR655 V3
(2.60 GHz, AMD EPYC 9655)

SPECrate®2026_fp_base = 324
SPECrate®2026_fp_energy_base = 78.7
SPECrate®2026_fp_peak = 324
SPECrate®2026_fp_energy_peak = 78.7

CPU2026 License: 9017
Test Sponsor: Lenovo Global Technology
Tested by: Lenovo Global Technology

Test Date: Feb-2026
Hardware Availability: Jul-2025
Software Availability: Jan-2026

Platform Notes (Continued)

16. /sys/kernel/mm/transparent_hugepage
defrag [always] defer+madvise madvise never
enabled [always] madvise never
hpage_pmd_size 2097152
shmem_enabled always within_size advise [never] deny force

17. /sys/kernel/mm/transparent_hugepage/khugepaged
alloc_sleep_millisecs 60000
defrag 1
max_ptes_none 511
max_ptes_shared 256
max_ptes_swap 64
pages_to_scan 4096
scan_sleep_millisecs 10000

18. OS release
From /etc/*-release /etc/*-version
os-release SUSE Linux Enterprise Server 15 SP6

19. Disk information
SPEC is set to: /home/cpu2026-0.902.0-amd_aocc510_znver5_A1
Filesystem Type Size Used Avail Use% Mounted on
/dev/sda3 xfs 443G 106G 338G 24% /

20. /sys/devices/virtual/dmi/id
Vendor: Lenovo
Product: ThinkSystem SR655V3
Product Family: ThinkSystem
Serial: 1234567890

21. dmidecode
Additional information from dmidecode 3.4 follows. WARNING: Use caution when you interpret this section. The 'dmidecode' program reads system data which is "intended to allow hardware to be accurately determined", but the intent may not be met, as there are frequent changes to hardware, firmware, and the "DMTF SMBIOS" standard.
Memory:
8x Samsung M321R4GA3PB2-CCPEC 32 GB 2 rank 6400, configured at 4800
2x Samsung M321R4GA3PB2-CCPKC 32 GB 2 rank 6400, configured at 4800
2x Samsung M321R4GA3PB2-CCPPC 32 GB 2 rank 6400, configured at 4800

(Continued on next page)



SPEC CPU®2026 Floating Point Rate Result

Copyright 2026 Standard Performance Evaluation Corporation

Lenovo Global Technology
ThinkSystem SR655 V3
(2.60 GHz, AMD EPYC 9655)

SPECrate®2026_fp_base = 324
SPECrate®2026_fp_energy_base = 78.7
SPECrate®2026_fp_peak = 324
SPECrate®2026_fp_energy_peak = 78.7

CPU2026 License: 9017
Test Sponsor: Lenovo Global Technology
Tested by: Lenovo Global Technology

Test Date: Feb-2026
Hardware Availability: Jul-2025
Software Availability: Jan-2026

Platform Notes (Continued)

22. BIOS
(This section combines info from /sys/devices and dmidecode.)
BIOS Vendor: Lenovo
BIOS Version: KAE141G-5.81
BIOS Date: 01/22/2026
BIOS Revision: 5.81
Firmware Revision: 56.20

Compiler Version Notes

=====
C | 782.lbm_r(base)

AMD clang version 17.0.6 (CLANG: AOCC_5.1.0-Build#1994 2025_12_23)
Target: x86_64-unknown-linux-gnu
Thread model: posix
InstalledDir: /opt/AMD/aocc/aocc-compiler-5.1.0/bin

=====
C++ | 731.astcenc_r(base) 736.ocio_r(base) 748.flightdm_r(base)
766.femflow_r(base) 767.nest_r(base) 772.marian_r(base)

AMD clang version 17.0.6 (CLANG: AOCC_5.1.0-Build#1994 2025_12_23)
Target: x86_64-unknown-linux-gnu
Thread model: posix
InstalledDir: /opt/AMD/aocc/aocc-compiler-5.1.0/bin

=====
C++, C | 709.cactus_r(base) 737.gmsh_r(base)

AMD clang version 17.0.6 (CLANG: AOCC_5.1.0-Build#1994 2025_12_23)
Target: x86_64-unknown-linux-gnu
Thread model: posix
InstalledDir: /opt/AMD/aocc/aocc-compiler-5.1.0/bin

=====
Fortran | 722.palm_r(base) 749.fotonik3d_r(base) 765.roms_r(base)

AMD clang version 17.0.6 (CLANG: AOCC_5.1.0-Build#1994 2025_12_23)

(Continued on next page)



SPEC CPU®2026 Floating Point Rate Result

Copyright 2026 Standard Performance Evaluation Corporation

Lenovo Global Technology
ThinkSystem SR655 V3
(2.60 GHz, AMD EPYC 9655)

SPECrate®2026_fp_base = 324
SPECrate®2026_fp_energy_base = 78.7
SPECrate®2026_fp_peak = 324
SPECrate®2026_fp_energy_peak = 78.7

CPU2026 License: 9017
Test Sponsor: Lenovo Global Technology
Tested by: Lenovo Global Technology

Test Date: Feb-2026
Hardware Availability: Jul-2025
Software Availability: Jan-2026

Compiler Version Notes (Continued)

Target: x86_64-unknown-linux-gnu
Thread model: posix
InstalledDir: /opt/AMD/aocc/aocc-compiler-5.1.0/bin

Base Compiler Invocation

C benchmarks:

clang

C++ benchmarks:

clang++

Fortran benchmarks:

flang

Benchmarks using both C and C++:

clang++ clang

Base Portability Flags

709.cactus_r: -DSPEC_LP64
722.palm_r: -DSPEC_LP64
731.ascenc_r: -DSPEC_LP64
736.ocio_r: -fno-finite-math-only -DSPEC_LP64
737.gmsh_r: -fno-fast-math -DSPEC_LP64
748.flightdm_r: -fno-reciprocal-math -DSPEC_LP64
749.fotonik3d_r: -DSPEC_LP64
765.roms_r: -DSPEC_LP64
766.femflow_r: -DSPEC_LP64
767.nest_r: -fno-finite-math-only -DSPEC_LP64
772.marian_r: -DSPEC_LP64
782.lbm_r: -DSPEC_LP64

Base Optimization Flags

C benchmarks:

-m64 -std=c18 -Wl,-mllvm -Wl,-align-all-nofallthru-blocks=6
-Wl,-mllvm -Wl,-reduce-array-computations=3

(Continued on next page)



SPEC CPU®2026 Floating Point Rate Result

Copyright 2026 Standard Performance Evaluation Corporation

Lenovo Global Technology
ThinkSystem SR655 V3
(2.60 GHz, AMD EPYC 9655)

SPECrate®2026_fp_base = 324
SPECrate®2026_fp_energy_base = 78.7
SPECrate®2026_fp_peak = 324
SPECrate®2026_fp_energy_peak = 78.7

CPU2026 License: 9017
Test Sponsor: Lenovo Global Technology
Tested by: Lenovo Global Technology

Test Date: Feb-2026
Hardware Availability: Jul-2025
Software Availability: Jan-2026

Base Optimization Flags (Continued)

C benchmarks (continued):

```
-Wl,-mllvm -Wl,-ldist-scalar-expand -fenable-aggressive-gather
-ffast-math -O3 -march=znver5 -fveclib=AMDLIBM -fno-PIE -no-pie
-flto -fstruct-layout=7 -mllvm -unroll-threshold=50
-mllvm -inline-threshold=1000 -fremap-arrays -fstrip-mining
-mllvm -reduce-array-computations=3 -zopt -lamdlibm -lamdalloc
-lflang
```

C++ benchmarks:

```
-m64 -std=c++17 -Wl,-mllvm -Wl,-align-all-nofallthru-blocks=6
-Wl,-mllvm -Wl,-reduce-array-computations=3
-Wl,-mllvm -Wl,-x86-use-vzeroupper=false -Wl,-mllvm -Wl,-extra-inliner
-ffast-math -O3 -march=znver5 -fveclib=AMDLIBM -flto
-mllvm -unroll-threshold=100 -mllvm -loop-unswitch-threshold=200000
-mllvm -reduce-array-computations=3 -zopt -lamdlibm -lamdalloc
-lflang
```

Fortran benchmarks:

```
-m64 -Mstandard -Wl,-mllvm -Wl,-align-all-nofallthru-blocks=6
-Wl,-mllvm -Wl,-reduce-array-computations=3
-Wl,-mllvm -Wl,-enable-X86-prefetching
-Wl,-mllvm -Wl,-enable-aggressive-gather=true
-Wl,-mllvm -Wl,-enable-masked-gather-sequence=false -ffast-math -O3
-march=znver5 -fveclib=AMDLIBM -flto -Mrecursive -funroll-loops
-mllvm -lsr-in-nested-loop -mllvm -reduce-array-computations=3
-fepilog-vectorization-of-inductions -zopt -lamdlibm -lamdalloc
-lflang
```

Benchmarks using both C and C++:

```
-m64 -std=c++17 -std=c18 -Wl,-mllvm -Wl,-align-all-nofallthru-blocks=6
-Wl,-mllvm -Wl,-reduce-array-computations=3
-Wl,-mllvm -Wl,-x86-use-vzeroupper=false -Wl,-mllvm -Wl,-extra-inliner
-ffast-math -O3 -march=znver5 -fveclib=AMDLIBM -fno-PIE -no-pie
-flto -fstruct-layout=7 -mllvm -unroll-threshold=50
-mllvm -inline-threshold=1000 -fremap-arrays -fstrip-mining
-mllvm -reduce-array-computations=3 -zopt -mllvm -unroll-threshold=100
-mllvm -loop-unswitch-threshold=200000 -lamdlibm -lamdalloc -lflang
```

Peak Optimization Flags

C benchmarks:

(Continued on next page)



SPEC CPU®2026 Floating Point Rate Result

Copyright 2026 Standard Performance Evaluation Corporation

Lenovo Global Technology
ThinkSystem SR655 V3
(2.60 GHz, AMD EPYC 9655)

SPECrate®2026_fp_base = 324
SPECrate®2026_fp_energy_base = 78.7
SPECrate®2026_fp_peak = 324
SPECrate®2026_fp_energy_peak = 78.7

CPU2026 License: 9017
Test Sponsor: Lenovo Global Technology
Tested by: Lenovo Global Technology

Test Date: Feb-2026
Hardware Availability: Jul-2025
Software Availability: Jan-2026

Peak Optimization Flags (Continued)

782.lbm_r: basepeak = yes

C++ benchmarks:

731.ascenc_r: basepeak = yes

736.ocio_r: basepeak = yes

748.flightdm_r: basepeak = yes

766.femflow_r: basepeak = yes

767.nest_r: basepeak = yes

772.marian_r: basepeak = yes

Fortran benchmarks:

722.palm_r: basepeak = yes

749.fotonik3d_r: basepeak = yes

765.roms_r: basepeak = yes

Benchmarks using both C and C++:

709.cactus_r: basepeak = yes

737.gmsh_r: basepeak = yes

The flags files that were used to format this result can be browsed at

<http://www.spec.org/cpu2026/results/flags/Lenovo-Platform-SPECcpu-Flags-V1.2-Turin-M.html>
<http://www.spec.org/cpu2026/results/flags/aocc-flags.2026-05-04.html>

You can also download the XML flags sources by saving the following links:

<http://www.spec.org/cpu2026/results/flags/Lenovo-Platform-SPECcpu-Flags-V1.2-Turin-M.xml>
<http://www.spec.org/cpu2026/results/flags/aocc-flags.2026-05-04.xml>



SPEC CPU®2026 Floating Point Rate Result

Copyright 2026 Standard Performance Evaluation Corporation

Lenovo Global Technology
ThinkSystem SR655 V3
(2.60 GHz, AMD EPYC 9655)

SPECrate®2026_fp_base = 324
SPECrate®2026_fp_energy_base = 78.7
SPECrate®2026_fp_peak = 324
SPECrate®2026_fp_energy_peak = 78.7

CPU2026 License: 9017
Test Sponsor: Lenovo Global Technology
Tested by: Lenovo Global Technology

Test Date: Feb-2026
Hardware Availability: Jul-2025
Software Availability: Jan-2026

PTDaemon, SPEC CPU, and SPECrate are registered trademarks of the Standard Performance Evaluation Corporation. All other brand and product names appearing in this result are trademarks or registered trademarks of their respective holders.

For questions about this result, please contact the tester. For other inquiries, please contact info@spec.org.

Tested with SPEC CPU®2026 v0.902.0 on 2026-02-01 08:05:05-0500.
Report generated on 2026-05-04 23:33:52 by CPU2026 PDF formatter (unknown).
Originally published on 2026-05-05.