



# SPEC® CINT2006 Result

Copyright 2006-2017 Standard Performance Evaluation Corporation

## Lenovo Global Technology

SPECint®\_rate2006 = 4750

ThinkSystem SR850  
(2.10 GHz, Intel Xeon Platinum 8170)

SPECint\_rate\_base2006 = 4520

CPU2006 license: 9017

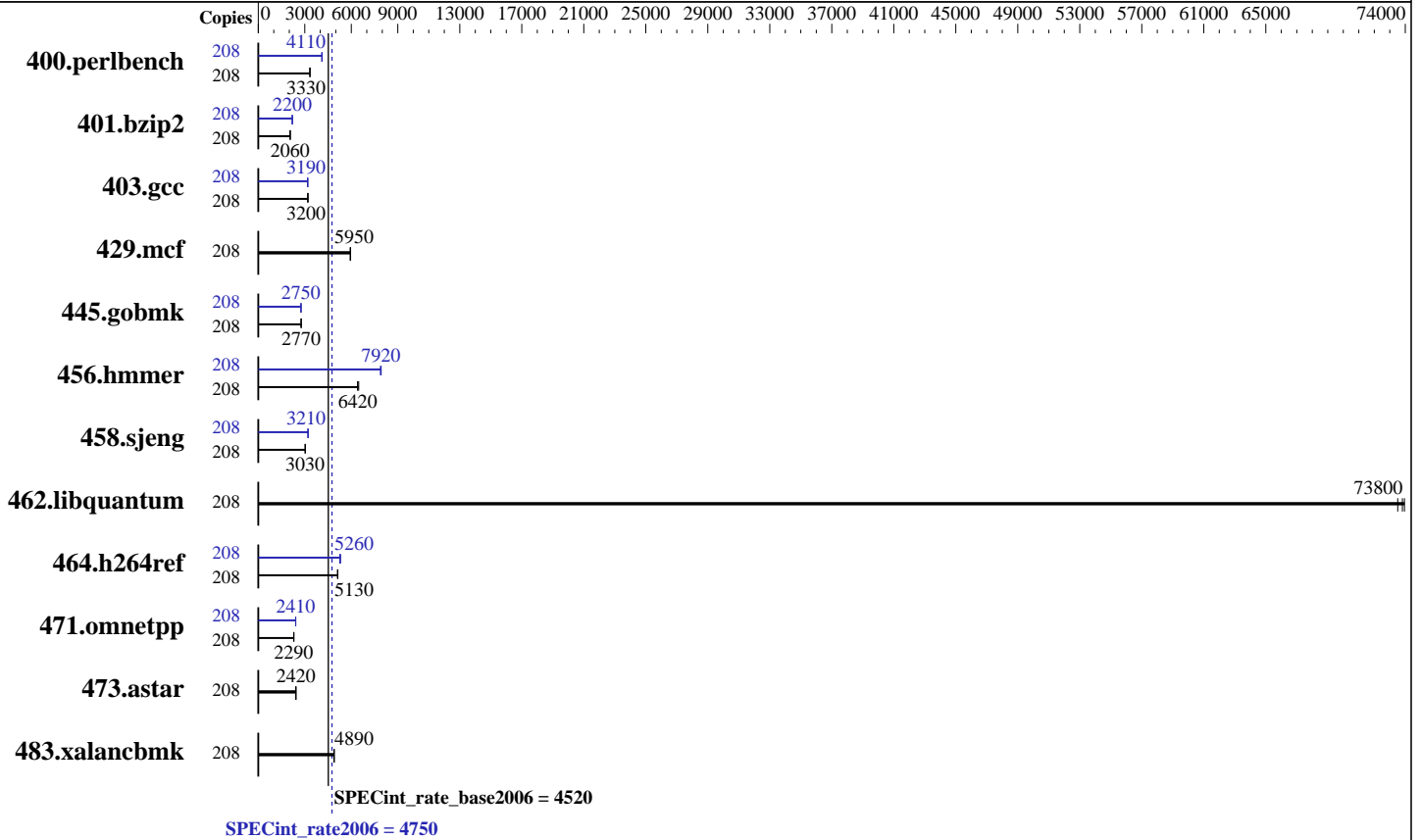
Test date: Aug-2017

Test sponsor: Lenovo Global Technology

Hardware Availability: Aug-2017

Tested by: Lenovo Global Technology

Software Availability: Nov-2016



### Hardware

CPU Name: Intel Xeon Platinum 8170  
 CPU Characteristics: Intel Turbo Boost Technology up to 3.70 GHz  
 CPU MHz: 2100  
 FPU: Integrated  
 CPU(s) enabled: 104 cores, 4 chips, 26 cores/chip, 2 threads/core  
 CPU(s) orderable: 2,4 chips  
 Primary Cache: 32 KB I + 32 KB D on chip per core  
 Secondary Cache: 1 MB I+D on chip per core  
 L3 Cache: 35.75 MB I+D on chip per chip  
 Other Cache: None  
 Memory: 1536 GB (48 x 32 GB 2Rx4 PC4-2666V-R)  
 Disk Subsystem: 1 x 800 GB SATA SSD  
 Other Hardware: None

### Software

Operating System: SUSE Linux Enterprise Server 12 SP2 (x86\_64)  
 Kernel 4.4.21-69-default  
 Compiler: C/C++: Version 17.0.1.132 of Intel C/C++ Compiler for Linux  
 Auto Parallel: No  
 File System: xfs  
 System State: Run level 3 (multi-user)  
 Base Pointers: 32-bit  
 Peak Pointers: 32/64-bit  
 Other Software: Microquill SmartHeap V10.2



# SPEC CINT2006 Result

Copyright 2006-2017 Standard Performance Evaluation Corporation

## Lenovo Global Technology

SPECint\_rate2006 = 4750

ThinkSystem SR850  
(2.10 GHz, Intel Xeon Platinum 8170)

SPECint\_rate\_base2006 = 4520

CPU2006 license: 9017

Test date: Aug-2017

Test sponsor: Lenovo Global Technology

Hardware Availability: Aug-2017

Tested by: Lenovo Global Technology

Software Availability: Nov-2016

## Results Table

Benchmark	Base							Peak						
	Copies	Seconds	Ratio	Seconds	Ratio	Seconds	Ratio	Copies	Seconds	Ratio	Seconds	Ratio	Seconds	Ratio
400.perlbench	208	610	3330	<b>610</b>	<b>3330</b>	609	3330	208	496	4100	493	4130	<b>495</b>	<b>4110</b>
401.bzip2	208	977	2050	975	2060	<b>975</b>	<b>2060</b>	208	913	2200	915	2190	<b>914</b>	<b>2200</b>
403.gcc	208	525	3190	522	3210	<b>522</b>	<b>3200</b>	208	526	3180	<b>525</b>	<b>3190</b>	524	3200
429.mcf	208	<b>319</b>	<b>5950</b>	318	5960	320	5930	208	<b>319</b>	<b>5950</b>	318	5960	320	5930
445.gobmk	208	<b>789</b>	<b>2770</b>	789	2760	789	2770	208	<b>792</b>	<b>2750</b>	791	2760	793	2750
456.hammer	208	303	6410	<b>302</b>	<b>6420</b>	299	6480	208	245	7920	<b>245</b>	<b>7920</b>	246	7880
458.sjeng	208	831	3030	<b>831</b>	<b>3030</b>	831	3030	208	784	3210	785	3210	<b>784</b>	<b>3210</b>
462.libquantum	208	58.6	73500	<b>58.4</b>	<b>73800</b>	58.3	73900	208	58.6	73500	<b>58.4</b>	<b>73800</b>	58.3	73900
464.h264ref	208	897	5130	<b>897</b>	<b>5130</b>	901	5110	208	<b>875</b>	<b>5260</b>	866	5310	875	5260
471.omnetpp	208	568	2290	567	2290	<b>567</b>	<b>2290</b>	208	<b>539</b>	<b>2410</b>	539	2410	538	2420
473.astar	208	<b>602</b>	<b>2420</b>	602	2420	601	2430	208	<b>602</b>	<b>2420</b>	602	2420	601	2430
483.xalancbmk	208	<b>294</b>	<b>4890</b>	294	4880	293	4910	208	<b>294</b>	<b>4890</b>	294	4880	293	4910

Results appear in the order in which they were run. Bold underlined text indicates a median measurement.

## Submit Notes

The numactl mechanism was used to bind copies to processors. The config file option 'submit' was used to generate numactl commands to bind each copy to a specific processor. For details, please see the config file.

## Operating System Notes

Stack size set to unlimited using "ulimit -s unlimited"

## Platform Notes

### BIOS Configuration:

Choose Operating Mode set to Maximum Performance  
 Execute Disable Bit set to Disable  
 DCU Streamer Prefetcher set to Disable  
 Intel Virtualization Technology set to Disable  
 Stale AtoS set to Enable  
 LLC dead line alloc set to Disable  
 SNC set to Enable  
 Sysinfo program /home/cpu2006-1.2-ic17.0u1/config/sysinfo.rev6993  
 Revision 6993 of 2015-11-06 (b5e8d4b4eb51ed28d7f98696cbe290c1)  
 running on Electron-node-02 Tue Aug 29 23:23:55 2017

This section contains SUT (System Under Test) info as seen by some common utilities. To remove or add to this section, see:

<http://www.spec.org/cpu2006/Docs/config.html#sysinfo>

From /proc/cpuinfo

Continued on next page



# SPEC CINT2006 Result

Copyright 2006-2017 Standard Performance Evaluation Corporation

## Lenovo Global Technology

SPECint\_rate2006 = 4750

ThinkSystem SR850  
(2.10 GHz, Intel Xeon Platinum 8170)

SPECint\_rate\_base2006 = 4520

CPU2006 license: 9017

Test date: Aug-2017

Test sponsor: Lenovo Global Technology

Hardware Availability: Aug-2017

Tested by: Lenovo Global Technology

Software Availability: Nov-2016

### Platform Notes (Continued)

```

model name : Intel(R) Xeon(R) Platinum 8170 CPU @ 2.10GHz
 4 "physical id"s (chips)
 208 "processors"
cores, siblings (Caution: counting these is hw and system dependent. The
following excerpts from /proc/cpuinfo might not be reliable. Use with
caution.)
cpu cores : 26
siblings : 52
physical 0: cores 0 1 2 3 4 5 6 8 9 10 11 12 13 16 17 18 19 20 21 22 24 25
26 27 28 29
physical 1: cores 0 1 2 3 4 5 6 8 9 10 11 12 13 16 17 18 19 20 21 22 24 25
26 27 28 29
physical 2: cores 0 1 2 3 4 5 6 8 9 10 11 12 13 16 17 18 19 20 21 22 24 25
26 27 28 29
physical 3: cores 0 1 2 3 4 5 6 8 9 10 11 12 13 16 17 18 19 20 21 22 24 25
26 27 28 29
cache size : 36608 KB

```

```

From /proc/meminfo
MemTotal: 1584974048 kB
HugePages_Total: 0
Hugepagesize: 2048 kB

```

```

From /etc/*release* /etc/*version*
SuSE-release:
SUSE Linux Enterprise Server 12 (x86_64)
VERSION = 12
PATCHLEVEL = 2
# This file is deprecated and will be removed in a future service pack or
release.
# Please check /etc/os-release for details about this release.
os-release:
NAME="SLES"
VERSION="12-SP2"
VERSION_ID="12.2"
PRETTY_NAME="SUSE Linux Enterprise Server 12 SP2"
ID="sles"
ANSI_COLOR="0;32"
CPE_NAME="cpe:/o:suse:sles:12:sp2"

```

```

uname -a:
Linux Electron-node-02 4.4.21-69-default #1 SMP Tue Oct 25 10:58:20 UTC 2016
(9464f67) x86_64 x86_64 x86_64 GNU/Linux

```

run-level 3 Aug 29 23:18

```

SPEC is set to: /home/cpu2006-1.2-ic17.0u1
Filesystem      Type  Size  Used Avail Use% Mounted on
/dev/sda4       xfs   688G  130G  559G  19% /home

```

Additional information from dmidecode:

Warning: Use caution when you interpret this section. The 'dmidecode' program  
Continued on next page



# SPEC CINT2006 Result

Copyright 2006-2017 Standard Performance Evaluation Corporation

Lenovo Global Technology

SPECint\_rate2006 = 4750

ThinkSystem SR850  
(2.10 GHz, Intel Xeon Platinum 8170)

SPECint\_rate\_base2006 = 4520

CPU2006 license: 9017

Test date: Aug-2017

Test sponsor: Lenovo Global Technology

Hardware Availability: Aug-2017

Tested by: Lenovo Global Technology

Software Availability: Nov-2016

## Platform Notes (Continued)

reads system data which is "intended to allow hardware to be accurately determined", but the intent may not be met, as there are frequent changes to hardware, firmware, and the "DMTF SMBIOS" standard.

BIOS Lenovo -[TEE113J-1.00]- 06/03/2017

Memory:

48x Samsung M393A4K40BB2-CTD 32 GB 2 rank 2666 MHz

(End of data from sysinfo program)

## General Notes

Environment variables set by runspec before the start of the run:

LD\_LIBRARY\_PATH = "/home/cpu2006-1.2-ic17.0ul/lib/ia32:/home/cpu2006-1.2-ic17.0ul/lib/intel64:/home/cpu2006-1.2-ic17.0ul/sh10.2"

Binaries compiled on a system with 1x Intel Core i7-4790 CPU + 32GB RAM  
memory using Redhat Enterprise Linux 7.2

Transparent Huge Pages enabled by default

Filesystem page cache cleared with:

```
echo 1> /proc/sys/vm/drop_caches
```

runspec command invoked through numactl i.e.:

```
numactl --interleave=all runspec <etc>
```

## Base Compiler Invocation

C benchmarks:

```
icc -m32 -L/opt/intel/compilers_and_libraries_2017/linux/lib/ia32
```

C++ benchmarks:

```
icpc -m32 -L/opt/intel/compilers_and_libraries_2017/linux/lib/ia32
```

## Base Portability Flags

```
400.perlbench: -D_FILE_OFFSET_BITS=64 -DSPEC_CPU_LINUX_IA32
401.bzip2: -D_FILE_OFFSET_BITS=64
403.gcc: -D_FILE_OFFSET_BITS=64
429.mcf: -D_FILE_OFFSET_BITS=64
445.gobmk: -D_FILE_OFFSET_BITS=64
456.hmmer: -D_FILE_OFFSET_BITS=64
458.sjeng: -D_FILE_OFFSET_BITS=64
462.libquantum: -D_FILE_OFFSET_BITS=64 -DSPEC_CPU_LINUX
464.h264ref: -D_FILE_OFFSET_BITS=64
471.omnetpp: -D_FILE_OFFSET_BITS=64
473.astar: -D_FILE_OFFSET_BITS=64
483.xalancbmk: -D_FILE_OFFSET_BITS=64 -DSPEC_CPU_LINUX
```



# SPEC CINT2006 Result

Copyright 2006-2017 Standard Performance Evaluation Corporation

Lenovo Global Technology

SPECint\_rate2006 = 4750

ThinkSystem SR850  
(2.10 GHz, Intel Xeon Platinum 8170)

SPECint\_rate\_base2006 = 4520

CPU2006 license: 9017

Test date: Aug-2017

Test sponsor: Lenovo Global Technology

Hardware Availability: Aug-2017

Tested by: Lenovo Global Technology

Software Availability: Nov-2016

## Base Optimization Flags

C benchmarks:

-xCORE-AVX512 -ipo -O3 -no-prec-div -qopt-prefetch  
-qopt-mem-layout-trans=3

C++ benchmarks:

-xCORE-AVX512 -ipo -O3 -no-prec-div -qopt-prefetch  
-qopt-mem-layout-trans=3 -Wl,-z,muldefs -L/sh10.2 -lsmartheap

## Base Other Flags

C benchmarks:

403.gcc: -Dalloca=\_alloca

## Peak Compiler Invocation

C benchmarks (except as noted below):

icc -m32 -L/opt/intel/compilers\_and\_libraries\_2017/linux/lib/ia32

400.perlbench: icc -m64

401.bzip2: icc -m64

456.hmmer: icc -m64

458.sjeng: icc -m64

C++ benchmarks:

icpc -m32 -L/opt/intel/compilers\_and\_libraries\_2017/linux/lib/ia32

## Peak Portability Flags

400.perlbench: -DSPEC\_CPU\_LP64 -DSPEC\_CPU\_LINUX\_X64

401.bzip2: -DSPEC\_CPU\_LP64

403.gcc: -D\_FILE\_OFFSET\_BITS=64

429.mcf: -D\_FILE\_OFFSET\_BITS=64

445.gobmk: -D\_FILE\_OFFSET\_BITS=64

456.hmmer: -DSPEC\_CPU\_LP64

458.sjeng: -DSPEC\_CPU\_LP64

462.libquantum: -D\_FILE\_OFFSET\_BITS=64 -DSPEC\_CPU\_LINUX

464.h264ref: -D\_FILE\_OFFSET\_BITS=64

471.omnetpp: -D\_FILE\_OFFSET\_BITS=64

473.astar: -D\_FILE\_OFFSET\_BITS=64

Continued on next page



# SPEC CINT2006 Result

Copyright 2006-2017 Standard Performance Evaluation Corporation

Lenovo Global Technology

SPECint\_rate2006 = 4750

ThinkSystem SR850  
(2.10 GHz, Intel Xeon Platinum 8170)

SPECint\_rate\_base2006 = 4520

CPU2006 license: 9017

Test date: Aug-2017

Test sponsor: Lenovo Global Technology

Hardware Availability: Aug-2017

Tested by: Lenovo Global Technology

Software Availability: Nov-2016

## Peak Portability Flags (Continued)

483.xalancbmk: -D\_FILE\_OFFSET\_BITS=64 -DSPEC\_CPU\_LINUX

## Peak Optimization Flags

C benchmarks:

400.perlbench: -prof-gen(pass 1) -prof-use(pass 2) -xCORE-AVX512(pass 2)  
-par-num-threads=1(pass 1) -ipo(pass 2) -O3(pass 2)  
-no-prec-div(pass 2) -auto-ilp32 -qopt-mem-layout-trans=3

401.bzip2: -prof-gen(pass 1) -prof-use(pass 2) -xCORE-AVX512(pass 2)  
-par-num-threads=1(pass 1) -ipo(pass 2) -O3(pass 2)  
-no-prec-div(pass 2) -qopt-prefetch -auto-ilp32  
-qopt-mem-layout-trans=3

403.gcc: -xCORE-AVX512 -ipo -O3 -no-prec-div  
-qopt-mem-layout-trans=3

429.mcf: basepeak = yes

445.gobmk: -prof-gen(pass 1) -prof-use(pass 2) -xCORE-AVX512(pass 2)  
-par-num-threads=1(pass 1) -ipo(pass 2) -O3(pass 2)  
-no-prec-div(pass 2) -qopt-mem-layout-trans=3

456.hmmer: -xCORE-AVX512 -ipo -O3 -no-prec-div -unroll2 -auto-ilp32  
-qopt-mem-layout-trans=3

458.sjeng: -prof-gen(pass 1) -prof-use(pass 2) -xCORE-AVX512(pass 2)  
-par-num-threads=1(pass 1) -ipo(pass 2) -O3(pass 2)  
-no-prec-div(pass 2) -unroll4 -auto-ilp32  
-qopt-mem-layout-trans=3

462.libquantum: basepeak = yes

464.h264ref: -prof-gen(pass 1) -prof-use(pass 2) -xCORE-AVX512(pass 2)  
-par-num-threads=1(pass 1) -ipo(pass 2) -O3(pass 2)  
-no-prec-div(pass 2) -unroll2 -qopt-mem-layout-trans=3

C++ benchmarks:

471.omnetpp: -prof-gen(pass 1) -prof-use(pass 2) -xCORE-AVX512(pass 2)  
-par-num-threads=1(pass 1) -ipo(pass 2) -O3(pass 2)  
-no-prec-div(pass 2)  
-qopt-ra-region-strategy=block  
-qopt-mem-layout-trans=3 -Wl,-z,muldefs  
-L/sh10.2 -lsmartheap

Continued on next page



# SPEC CINT2006 Result

Copyright 2006-2017 Standard Performance Evaluation Corporation

**Lenovo Global Technology**

ThinkSystem SR850  
(2.10 GHz, Intel Xeon Platinum 8170)

**SPECint\_rate2006 = 4750**

**SPECint\_rate\_base2006 = 4520**

**CPU2006 license:** 9017

**Test sponsor:** Lenovo Global Technology

**Tested by:** Lenovo Global Technology

**Test date:** Aug-2017

**Hardware Availability:** Aug-2017

**Software Availability:** Nov-2016

## Peak Optimization Flags (Continued)

473.astar: basepeak = yes

483.xalancbmk: basepeak = yes

## Peak Other Flags

C benchmarks:

403.gcc: -Dalloca=\_alloca

The flags files that were used to format this result can be browsed at

<http://www.spec.org/cpu2006/flags/Intel-ic17.0-official-linux64-revD.html>

<http://www.spec.org/cpu2006/flags/Lenovo-Platform-Flags-V1.2-SKL-C.20171004.html>

You can also download the XML flags sources by saving the following links:

<http://www.spec.org/cpu2006/flags/Intel-ic17.0-official-linux64-revD.xml>

<http://www.spec.org/cpu2006/flags/Lenovo-Platform-Flags-V1.2-SKL-C.20171004.xml>

SPEC and SPECint are registered trademarks of the Standard Performance Evaluation Corporation. All other brand and product names appearing in this result are trademarks or registered trademarks of their respective holders.

For questions about this result, please contact the tester.  
For other inquiries, please contact [webmaster@spec.org](mailto:webmaster@spec.org).

Tested with SPEC CPU2006 v1.2.

Report generated on Wed Oct 4 12:39:50 2017 by SPEC CPU2006 PS/PDF formatter v6932.

Originally published on 3 October 2017.