



SPEC® CINT2006 Result

Copyright 2006-2017 Standard Performance Evaluation Corporation

Lenovo Global Technology

SPECint®_rate2006 = 1790

ThinkSystem SR650
(2.60 GHz, Intel Xeon Gold 6142)

SPECint_rate_base2006 = 1700

CPU2006 license: 9017

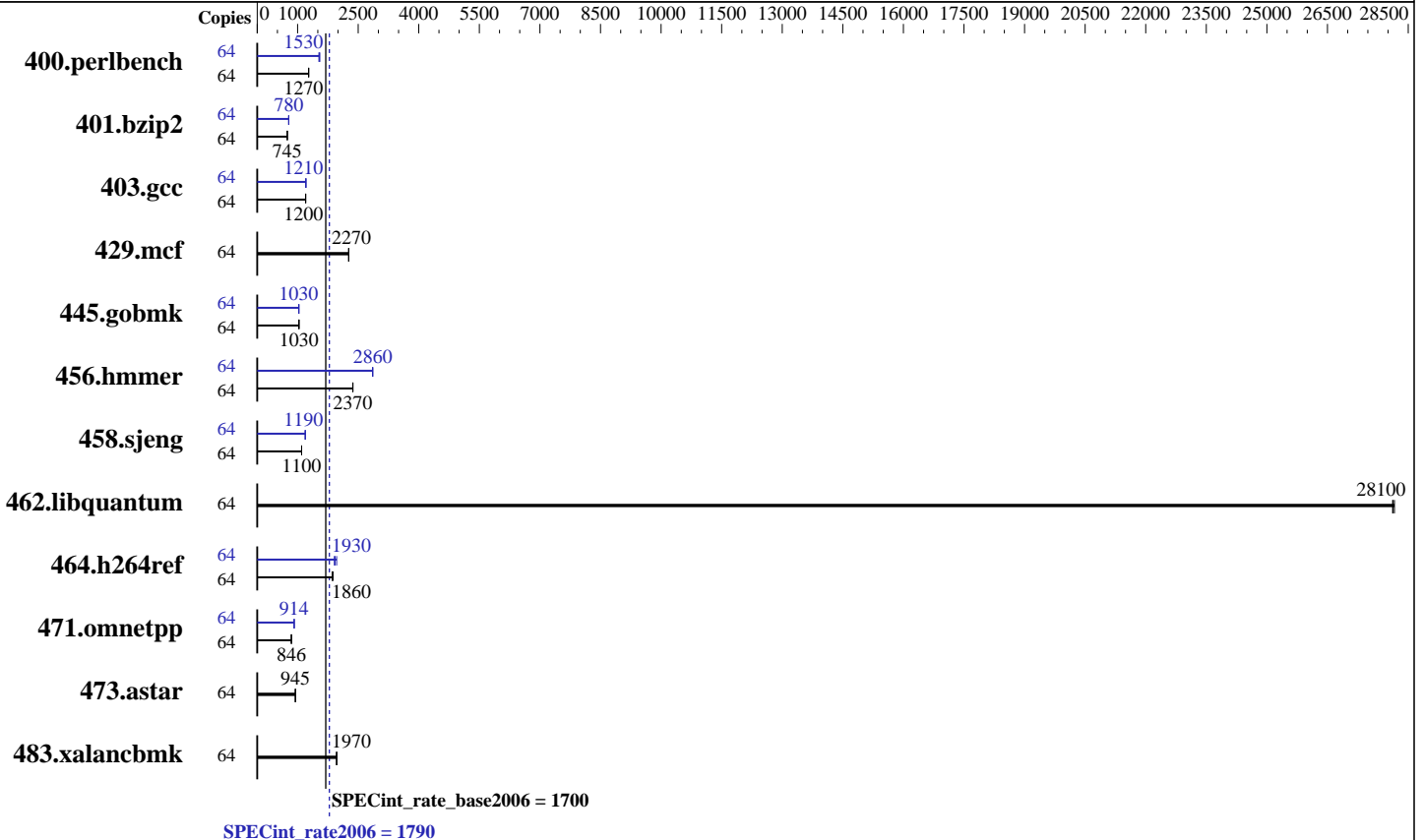
Test date: Jul-2017

Test sponsor: Lenovo Global Technology

Hardware Availability: Aug-2017

Tested by: Lenovo Global Technology

Software Availability: Apr-2017



Hardware

CPU Name: Intel Xeon Gold 6142
 CPU Characteristics: Intel Turbo Boost Technology up to 3.70 GHz
 CPU MHz: 2600
 FPU: Integrated
 CPU(s) enabled: 32 cores, 2 chips, 16 cores/chip, 2 threads/core
 CPU(s) orderable: 1,2 chips
 Primary Cache: 32 KB I + 32 KB D on chip per core
 Secondary Cache: 1 MB I+D on chip per core
 L3 Cache: 22 MB I+D on chip per chip
 Other Cache: None
 Memory: 384 GB (24 x 16 GB 2Rx8 PC4-2666V-R)
 Disk Subsystem: 1 x 800 GB SAS SSD
 Other Hardware: None

Software

Operating System: SUSE Linux Enterprise Server 12 SP2 (x86_64)
 Kernel 4.4.21-69-default
 Compiler: C/C++: Version 17.0.3.191 of Intel C/C++ Compiler for Linux
 Auto Parallel: Yes
 File System: xfs
 System State: Run level 3 (multi-user)
 Base Pointers: 32-bit
 Peak Pointers: 32/64-bit
 Other Software: Microquill SmartHeap V10.2



SPEC CINT2006 Result

Copyright 2006-2017 Standard Performance Evaluation Corporation

Lenovo Global Technology

SPECint_rate2006 = 1790

ThinkSystem SR650
(2.60 GHz, Intel Xeon Gold 6142)

SPECint_rate_base2006 = 1700

CPU2006 license: 9017

Test date: Jul-2017

Test sponsor: Lenovo Global Technology

Hardware Availability: Aug-2017

Tested by: Lenovo Global Technology

Software Availability: Apr-2017

Results Table

Benchmark	Base							Peak						
	Copies	Seconds	Ratio	Seconds	Ratio	Seconds	Ratio	Copies	Seconds	Ratio	Seconds	Ratio	Seconds	Ratio
400.perlbench	64	491	1270	<u>491</u>	<u>1270</u>	492	1270	64	403	1550	408	1530	<u>408</u>	<u>1530</u>
401.bzip2	64	830	744	828	746	<u>830</u>	<u>745</u>	64	<u>792</u>	<u>780</u>	792	780	790	782
403.gcc	64	<u>429</u>	<u>1200</u>	429	1200	431	1200	64	<u>428</u>	<u>1210</u>	427	1210	429	1200
429.mcf	64	258	2260	257	2270	<u>258</u>	<u>2270</u>	64	258	2260	257	2270	<u>258</u>	<u>2270</u>
445.gobmk	64	<u>650</u>	<u>1030</u>	651	1030	649	1030	64	<u>652</u>	<u>1030</u>	652	1030	651	1030
456.hammer	64	252	2370	<u>252</u>	<u>2370</u>	252	2370	64	209	2860	<u>209</u>	<u>2860</u>	209	2860
458.sjeng	64	705	1100	<u>704</u>	<u>1100</u>	704	1100	64	<u>650</u>	<u>1190</u>	652	1190	650	1190
462.libquantum	64	47.2	28100	47.1	28200	<u>47.1</u>	<u>28100</u>	64	47.2	28100	47.1	28200	<u>47.1</u>	<u>28100</u>
464.h264ref	64	761	1860	754	1880	<u>761</u>	<u>1860</u>	64	<u>735</u>	<u>1930</u>	720	1970	742	1910
471.omnetpp	64	473	846	<u>473</u>	<u>846</u>	473	846	64	438	914	436	916	<u>437</u>	<u>914</u>
473.astar	64	<u>475</u>	<u>945</u>	475	945	475	945	64	<u>475</u>	<u>945</u>	475	945	475	945
483.xalancbmk	64	<u>225</u>	<u>1970</u>	224	1970	225	1960	64	<u>225</u>	<u>1970</u>	224	1970	225	1960

Results appear in the order in which they were run. Bold underlined text indicates a median measurement.

Submit Notes

The numactl mechanism was used to bind copies to processors. The config file option 'submit' was used to generate numactl commands to bind each copy to a specific processor. For details, please see the config file.

Operating System Notes

Stack size set to unlimited using "ulimit -s unlimited"

Platform Notes

BIOS configuration:

Operating Mode set to Maximum Performance

SNC set to Enable

DCU Streamer Prefetcher set to Disable

Stale AtoS set to Enable

LLC dead line alloc set to Disable

Sysinfo program /home/cpu2006-1.2-ic17.0u3/config/sysinfo.rev6993

Revision 6993 of 2015-11-06 (b5e8d4b4eb51ed28d7f98696cbe290c1)

running on Cyborg-SUT3 Mon Jul 10 18:28:53 2017

This section contains SUT (System Under Test) info as seen by some common utilities. To remove or add to this section, see:

<http://www.spec.org/cpu2006/Docs/config.html#sysinfo>

From /proc/cpuinfo

model name : Intel(R) Xeon(R) Gold 6142 CPU @ 2.60GHz

2 "physical id"s (chips)

Continued on next page

Standard Performance Evaluation Corporation

info@spec.org

<http://www.spec.org/>

Page 2



SPEC CINT2006 Result

Copyright 2006-2017 Standard Performance Evaluation Corporation

Lenovo Global Technology

SPECint_rate2006 = 1790

ThinkSystem SR650
(2.60 GHz, Intel Xeon Gold 6142)

SPECint_rate_base2006 = 1700

CPU2006 license: 9017

Test date: Jul-2017

Test sponsor: Lenovo Global Technology

Hardware Availability: Aug-2017

Tested by: Lenovo Global Technology

Software Availability: Apr-2017

Platform Notes (Continued)

64 "processors"
cores, siblings (Caution: counting these is hw and system dependent. The following excerpts from /proc/cpuinfo might not be reliable. Use with caution.)

```
cpu cores : 16
siblings  : 32
physical 0: cores 0 1 2 3 4 5 6 7 8 9 10 11 12 13 14 15
physical 1: cores 0 1 2 3 4 5 6 7 8 9 10 11 12 13 14 15
cache size : 22528 KB
```

```
From /proc/meminfo
MemTotal:      395893236 kB
HugePages_Total: 0
Hugepagesize:  2048 kB
```

From /etc/*release* /etc/*version*

```
SuSE-release:
SUSE Linux Enterprise Server 12 (x86_64)
VERSION = 12
PATCHLEVEL = 2
# This file is deprecated and will be removed in a future service pack or
release.
# Please check /etc/os-release for details about this release.
os-release:
NAME="SLES"
VERSION="12-SP2"
VERSION_ID="12.2"
PRETTY_NAME="SUSE Linux Enterprise Server 12 SP2"
ID="sles"
ANSI_COLOR="0;32"
CPE_NAME="cpe:/o:suse:sles:12:sp2"
```

```
uname -a:
Linux Cyborg-SUT3 4.4.21-69-default #1 SMP Tue Oct 25 10:58:20 UTC 2016
(9464f67) x86_64 x86_64 x86_64 GNU/Linux
```

```
run-level 3 Jul 10 18:27
```

```
SPEC is set to: /home/cpu2006-1.2-ic17.0u3
Filesystem      Type  Size  Used Avail Use% Mounted on
/dev/sdb3        xfs   445G  9.9G  435G   3% /
```

Additional information from dmidecode:

Warning: Use caution when you interpret this section. The 'dmidecode' program reads system data which is "intended to allow hardware to be accurately determined", but the intent may not be met, as there are frequent changes to hardware, firmware, and the "DMTF SMBIOS" standard.

BIOS Lenovo -[IVE109Q-1.00]- 06/28/2017

Memory:
24x Samsung M393A2K43BB1-CTD 16 GB 2 rank 2666 MHz

Continued on next page



SPEC CINT2006 Result

Copyright 2006-2017 Standard Performance Evaluation Corporation

Lenovo Global Technology

SPECint_rate2006 = 1790

ThinkSystem SR650
(2.60 GHz, Intel Xeon Gold 6142)

SPECint_rate_base2006 = 1700

CPU2006 license: 9017

Test date: Jul-2017

Test sponsor: Lenovo Global Technology

Hardware Availability: Aug-2017

Tested by: Lenovo Global Technology

Software Availability: Apr-2017

Platform Notes (Continued)

(End of data from sysinfo program)

General Notes

Environment variables set by runspec before the start of the run:

LD_LIBRARY_PATH = "/home/cpu2006-1.2-ic17.0u3/lib/ia32:/home/cpu2006-1.2-ic17.0u3/lib/intel64:/home/cpu2006-1.2-ic17.0u3/sh10.2"

Binaries compiled on a system with 1x Intel Core i7-4790 CPU + 32GB RAM
memory using Redhat Enterprise Linux 7.2

Transparent Huge Pages enabled by default

Filesystem page cache cleared with:

shell invocation of 'sync; echo 3 > /proc/sys/vm/drop_caches' prior to run

runspec command invoked through numactl i.e.:

numactl --interleave=all runspec <etc>

Base Compiler Invocation

C benchmarks:

icc -m32 -L/opt/intel/compilers_and_libraries_2017/linux/lib/ia32

C++ benchmarks:

icpc -m32 -L/opt/intel/compilers_and_libraries_2017/linux/lib/ia32

Base Portability Flags

400.perlbench: -D_FILE_OFFSET_BITS=64 -DSPEC_CPU_LINUX_IA32
401.bzip2: -D_FILE_OFFSET_BITS=64
403.gcc: -D_FILE_OFFSET_BITS=64
429.mcf: -D_FILE_OFFSET_BITS=64
445.gobmk: -D_FILE_OFFSET_BITS=64
456.hmmer: -D_FILE_OFFSET_BITS=64
458.sjeng: -D_FILE_OFFSET_BITS=64
462.libquantum: -D_FILE_OFFSET_BITS=64 -DSPEC_CPU_LINUX
464.h264ref: -D_FILE_OFFSET_BITS=64
471.omnetpp: -D_FILE_OFFSET_BITS=64
473.astar: -D_FILE_OFFSET_BITS=64
483.xalancbmk: -D_FILE_OFFSET_BITS=64 -DSPEC_CPU_LINUX

Base Optimization Flags

C benchmarks:

-xCORE-AVX512 -ipo -O3 -no-prec-div -qopt-prefetch
-qopt-mem-layout-trans=3

Continued on next page



SPEC CINT2006 Result

Copyright 2006-2017 Standard Performance Evaluation Corporation

Lenovo Global Technology

SPECint_rate2006 = 1790

ThinkSystem SR650
(2.60 GHz, Intel Xeon Gold 6142)

SPECint_rate_base2006 = 1700

CPU2006 license: 9017

Test date: Jul-2017

Test sponsor: Lenovo Global Technology

Hardware Availability: Aug-2017

Tested by: Lenovo Global Technology

Software Availability: Apr-2017

Base Optimization Flags (Continued)

C++ benchmarks:

```
-xCORE-AVX512 -ipo -O3 -no-prec-div -qopt-prefetch
-qopt-mem-layout-trans=3 -Wl,-z,muldefs -L/sh10.2 -lsmartheap
```

Base Other Flags

C benchmarks:

```
403.gcc: -Dalloca=_alloca
```

Peak Compiler Invocation

C benchmarks (except as noted below):

```
icc -m32 -L/opt/intel/compilers_and_libraries_2017/linux/lib/ia32
```

```
400.perlbench: icc -m64
```

```
401.bzip2: icc -m64
```

```
456.hmmer: icc -m64
```

```
458.sjeng: icc -m64
```

C++ benchmarks:

```
icpc -m32 -L/opt/intel/compilers_and_libraries_2017/linux/lib/ia32
```

Peak Portability Flags

```
400.perlbench: -DSPEC_CPU_LP64 -DSPEC_CPU_LINUX_X64
```

```
401.bzip2: -DSPEC_CPU_LP64
```

```
403.gcc: -D_FILE_OFFSET_BITS=64
```

```
429.mcf: -D_FILE_OFFSET_BITS=64
```

```
445.gobmk: -D_FILE_OFFSET_BITS=64
```

```
456.hmmer: -DSPEC_CPU_LP64
```

```
458.sjeng: -DSPEC_CPU_LP64
```

```
462.libquantum: -D_FILE_OFFSET_BITS=64 -DSPEC_CPU_LINUX
```

```
464.h264ref: -D_FILE_OFFSET_BITS=64
```

```
471.omnetpp: -D_FILE_OFFSET_BITS=64
```

```
473.astar: -D_FILE_OFFSET_BITS=64
```

```
483.xalancbmk: -D_FILE_OFFSET_BITS=64 -DSPEC_CPU_LINUX
```



SPEC CINT2006 Result

Copyright 2006-2017 Standard Performance Evaluation Corporation

Lenovo Global Technology

SPECint_rate2006 = 1790

ThinkSystem SR650
(2.60 GHz, Intel Xeon Gold 6142)

SPECint_rate_base2006 = 1700

CPU2006 license: 9017

Test date: Jul-2017

Test sponsor: Lenovo Global Technology

Hardware Availability: Aug-2017

Tested by: Lenovo Global Technology

Software Availability: Apr-2017

Peak Optimization Flags

C benchmarks:

400.perlbench: -prof-gen(pass 1) -prof-use(pass 2) -xCORE-AVX512(pass 2)
-par-num-threads=1(pass 1) -ipo(pass 2) -O3(pass 2)
-no-prec-div(pass 2) -auto-ilp32 -qopt-mem-layout-trans=3

401.bzip2: -prof-gen(pass 1) -prof-use(pass 2) -xCORE-AVX512(pass 2)
-par-num-threads=1(pass 1) -ipo(pass 2) -O3(pass 2)
-no-prec-div(pass 2) -qopt-prefetch -auto-ilp32
-qopt-mem-layout-trans=3

403.gcc: -xCORE-AVX512 -ipo -O3 -no-prec-div
-qopt-mem-layout-trans=3

429.mcf: basepeak = yes

445.gobmk: -prof-gen(pass 1) -prof-use(pass 2) -xCORE-AVX512(pass 2)
-par-num-threads=1(pass 1) -ipo(pass 2) -O3(pass 2)
-no-prec-div(pass 2) -qopt-mem-layout-trans=3

456.hmmer: -xCORE-AVX512 -ipo -O3 -no-prec-div -unroll2 -auto-ilp32
-qopt-mem-layout-trans=3

458.sjeng: -prof-gen(pass 1) -prof-use(pass 2) -xCORE-AVX512(pass 2)
-par-num-threads=1(pass 1) -ipo(pass 2) -O3(pass 2)
-no-prec-div(pass 2) -unroll4 -auto-ilp32
-qopt-mem-layout-trans=3

462.libquantum: basepeak = yes

464.h264ref: -prof-gen(pass 1) -prof-use(pass 2) -xCORE-AVX512(pass 2)
-par-num-threads=1(pass 1) -ipo(pass 2) -O3(pass 2)
-no-prec-div(pass 2) -unroll2 -qopt-mem-layout-trans=3

C++ benchmarks:

471.omnetpp: -prof-gen(pass 1) -prof-use(pass 2) -xCORE-AVX512(pass 2)
-par-num-threads=1(pass 1) -ipo(pass 2) -O3(pass 2)
-no-prec-div(pass 2)
-qopt-ra-region-strategy=block
-qopt-mem-layout-trans=3 -Wl,-z,muldefs
-L/sh10.2 -lsmartheap

473.astar: basepeak = yes

483.xalancbmk: basepeak = yes



SPEC CINT2006 Result

Copyright 2006-2017 Standard Performance Evaluation Corporation

Lenovo Global Technology

ThinkSystem SR650
(2.60 GHz, Intel Xeon Gold 6142)

SPECint_rate2006 = 1790

SPECint_rate_base2006 = 1700

CPU2006 license: 9017

Test sponsor: Lenovo Global Technology

Tested by: Lenovo Global Technology

Test date: Jul-2017

Hardware Availability: Aug-2017

Software Availability: Apr-2017

Peak Other Flags

C benchmarks:

403.gcc: -Dalloca=_alloca

The flags files that were used to format this result can be browsed at

<http://www.spec.org/cpu2006/flags/Intel-ic17.0-official-linux64-revF.html>

<http://www.spec.org/cpu2006/flags/Lenovo-Platform-Flags-V1.2-SKL-C.20171004.html>

You can also download the XML flags sources by saving the following links:

<http://www.spec.org/cpu2006/flags/Intel-ic17.0-official-linux64-revF.xml>

<http://www.spec.org/cpu2006/flags/Lenovo-Platform-Flags-V1.2-SKL-C.20171004.xml>

SPEC and SPECint are registered trademarks of the Standard Performance Evaluation Corporation. All other brand and product names appearing in this result are trademarks or registered trademarks of their respective holders.

For questions about this result, please contact the tester.
For other inquiries, please contact webmaster@spec.org.

Tested with SPEC CPU2006 v1.2.
Report generated on Wed Oct 4 12:37:54 2017 by SPEC CPU2006 PS/PDF formatter v6932.
Originally published on 3 October 2017.