



SPEC® CINT2006 Result

Copyright 2006-2017 Standard Performance Evaluation Corporation

Lenovo Global Technology

SPECint®_rate2006 = 2220

ThinkSystem SR630
(2.10 GHz, Intel Xeon Platinum 8160T)

SPECint_rate_base2006 = 2110

CPU2006 license: 9017

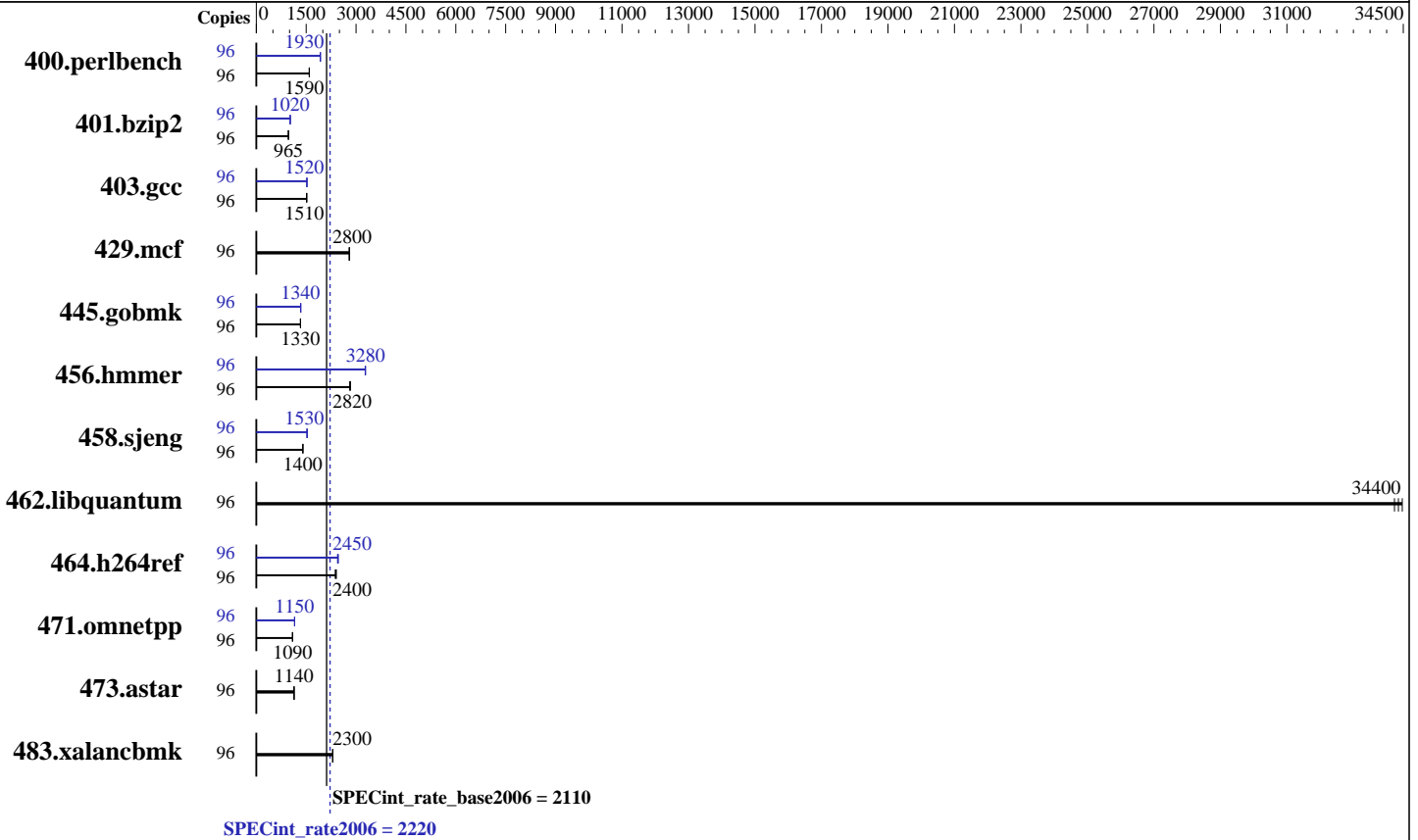
Test date: Jul-2017

Test sponsor: Lenovo Global Technology

Hardware Availability: Aug-2017

Tested by: Lenovo Global Technology

Software Availability: Apr-2017



Hardware

CPU Name: Intel Xeon Platinum 8160T
 CPU Characteristics: Intel Turbo Boost Technology up to 3.70 GHz
 CPU MHz: 2100
 FPU: Integrated
 CPU(s) enabled: 48 cores, 2 chips, 24 cores/chip, 2 threads/core
 CPU(s) orderable: 1,2 chips
 Primary Cache: 32 KB I + 32 KB D on chip per core
 Secondary Cache: 1 MB I+D on chip per core
 L3 Cache: 33 MB I+D on chip per chip
 Other Cache: None
 Memory: 384 GB (24 x 16 GB 2Rx8 PC4-2666V-R)
 Disk Subsystem: 1 x 800 GB SAS SSD
 Other Hardware: None

Software

Operating System: SUSE Linux Enterprise Server 12 SP2 (x86_64)
 Kernel 4.4.21-69-default
 Compiler: C/C++: Version 17.0.3.191 of Intel C/C++ Compiler for Linux
 Auto Parallel: Yes
 File System: btrfs
 System State: Run level 3 (multi-user)
 Base Pointers: 32-bit
 Peak Pointers: 32/64-bit
 Other Software: Microquill SmartHeap V10.2



SPEC CINT2006 Result

Copyright 2006-2017 Standard Performance Evaluation Corporation

Lenovo Global Technology

SPECint_rate2006 = 2220

ThinkSystem SR630
(2.10 GHz, Intel Xeon Platinum 8160T)

SPECint_rate_base2006 = 2110

CPU2006 license: 9017

Test date: Jul-2017

Test sponsor: Lenovo Global Technology

Hardware Availability: Aug-2017

Tested by: Lenovo Global Technology

Software Availability: Apr-2017

Results Table

Benchmark	Base							Peak						
	Copies	Seconds	Ratio	Seconds	Ratio	Seconds	Ratio	Copies	Seconds	Ratio	Seconds	Ratio	Seconds	Ratio
400.perlbench	96	588	1600	589	1590	589	1590	96	486	1930	488	1920	487	1930
401.bzip2	96	960	965	960	965	959	966	96	908	1020	907	1020	910	1020
403.gcc	96	510	1510	511	1510	509	1520	96	508	1520	509	1520	507	1530
429.mcf	96	312	2810	314	2790	313	2800	96	312	2810	314	2790	313	2800
445.gobmk	96	759	1330	759	1330	757	1330	96	754	1340	754	1340	754	1340
456.hammer	96	319	2810	316	2830	318	2820	96	274	3270	273	3280	273	3280
458.sjeng	96	829	1400	830	1400	830	1400	96	758	1530	763	1520	761	1530
462.libquantum	96	57.7	34500	58.1	34200	57.9	34400	96	57.7	34500	58.1	34200	57.9	34400
464.h264ref	96	883	2410	887	2400	895	2370	96	870	2440	866	2450	861	2470
471.omnetpp	96	550	1090	552	1090	550	1090	96	520	1150	523	1150	520	1150
473.astar	96	594	1140	594	1130	593	1140	96	594	1140	594	1130	593	1140
483.xalancbmk	96	289	2300	288	2300	288	2300	96	289	2300	288	2300	288	2300

Results appear in the order in which they were run. Bold underlined text indicates a median measurement.

Submit Notes

The numactl mechanism was used to bind copies to processors. The config file option 'submit' was used to generate numactl commands to bind each copy to a specific processor. For details, please see the config file.

Operating System Notes

Stack size set to unlimited using "ulimit -s unlimited"

Platform Notes

BIOS configuration:

Choose Operating Mode set to Maximum Performance

SNC set to Enable

DCU Streamer Prefetcher set to Disable

Stale AtoS set to Enable

LLC dead line alloc set to Disable

Sysinfo program /home/cpu2006-1.2-ic17.0u3/config/sysinfo.rev6993

Revision 6993 of 2015-11-06 (b5e8d4b4eb51ed28d7f98696cbe290c1)

running on Cable-SPECcpu2017-SUSE12SP2 Sat Jul 22 05:23:20 2017

This section contains SUT (System Under Test) info as seen by some common utilities. To remove or add to this section, see:

<http://www.spec.org/cpu2006/Docs/config.html#sysinfo>

From /proc/cpuinfo

model name : Intel(R) Xeon(R) Platinum 8160T CPU @ 2.10GHz

2 "physical id"s (chips)

Continued on next page

Standard Performance Evaluation Corporation

info@spec.org

<http://www.spec.org/>



SPEC CINT2006 Result

Copyright 2006-2017 Standard Performance Evaluation Corporation

Lenovo Global Technology

SPECint_rate2006 = 2220

ThinkSystem SR630
(2.10 GHz, Intel Xeon Platinum 8160T)

SPECint_rate_base2006 = 2110

CPU2006 license: 9017

Test date: Jul-2017

Test sponsor: Lenovo Global Technology

Hardware Availability: Aug-2017

Tested by: Lenovo Global Technology

Software Availability: Apr-2017

Platform Notes (Continued)

96 "processors"
cores, siblings (Caution: counting these is hw and system dependent. The following excerpts from /proc/cpuinfo might not be reliable. Use with caution.)

cpu cores : 24

siblings : 48

physical 0: cores 0 1 2 3 4 5 8 9 10 11 12 13 16 17 18 19 20 21 24 25 26
27 28 29

physical 1: cores 0 1 2 3 4 5 8 9 10 11 12 13 16 17 18 19 20 21 24 25 26
27 28 29

cache size : 33792 KB

From /proc/meminfo

MemTotal: 395891816 kB

HugePages_Total: 0

Hugepagesize: 2048 kB

From /etc/*release* /etc/*version*

SuSE-release:

SUSE Linux Enterprise Server 12 (x86_64)

VERSION = 12

PATCHLEVEL = 2

This file is deprecated and will be removed in a future service pack or release.

Please check /etc/os-release for details about this release.

os-release:

NAME="SLES"

VERSION="12-SP2"

VERSION_ID="12.2"

PRETTY_NAME="SUSE Linux Enterprise Server 12 SP2"

ID="sles"

ANSI_COLOR="0;32"

CPE_NAME="cpe:/o:suse:sles:12:sp2"

uname -a:

Linux Cable-SPECcpu2017-SUSE12SP2 4.4.21-69-default #1 SMP Tue Oct 25

10:58:20 UTC 2016 (9464f67) x86_64 x86_64 x86_64 GNU/Linux

run-level 3 Jul 22 05:22

SPEC is set to: /home/cpu2006-1.2-ic17.0u3

Filesystem Type Size Used Avail Use% Mounted on

/dev/sda2 btrfs 744G 35G 706G 5% /home

Additional information from dmidecode:

Warning: Use caution when you interpret this section. The 'dmidecode' program reads system data which is "intended to allow hardware to be accurately determined", but the intent may not be met, as there are frequent changes to hardware, firmware, and the "DMTF SMBIOS" standard.

BIOS Lenovo -[IVE109Q-1.00]- 06/28/2017

Memory:

Continued on next page



SPEC CINT2006 Result

Copyright 2006-2017 Standard Performance Evaluation Corporation

Lenovo Global Technology

SPECint_rate2006 = 2220

ThinkSystem SR630
(2.10 GHz, Intel Xeon Platinum 8160T)

SPECint_rate_base2006 = 2110

CPU2006 license: 9017

Test date: Jul-2017

Test sponsor: Lenovo Global Technology

Hardware Availability: Aug-2017

Tested by: Lenovo Global Technology

Software Availability: Apr-2017

Platform Notes (Continued)

24x Samsung M393A2K43BB1-CTD 16 GB 2 rank 2666 MHz

(End of data from sysinfo program)

General Notes

Environment variables set by runspec before the start of the run:

LD_LIBRARY_PATH = "/home/cpu2006-1.2-ic17.0u3/lib/ia32:/home/cpu2006-1.2-ic17.0u3/lib/intel64:/home/cpu2006-1.2-ic17.0u3/sh10.2"

Binaries compiled on a system with 1x Intel Core i7-4790 CPU + 32GB RAM
memory using Redhat Enterprise Linux 7.2

Transparent Huge Pages enabled by default

Filesystem page cache cleared with:

shell invocation of 'sync; echo 3 > /proc/sys/vm/drop_caches' prior to run
runspec command invoked through numactl i.e.:

numactl --interleave=all runspec <etc>

Base Compiler Invocation

C benchmarks:

icc -m32 -L/opt/intel/compilers_and_libraries_2017/linux/lib/ia32

C++ benchmarks:

icpc -m32 -L/opt/intel/compilers_and_libraries_2017/linux/lib/ia32

Base Portability Flags

400.perlbench: -D_FILE_OFFSET_BITS=64 -DSPEC_CPU_LINUX_IA32
401.bzip2: -D_FILE_OFFSET_BITS=64
403.gcc: -D_FILE_OFFSET_BITS=64
429.mcf: -D_FILE_OFFSET_BITS=64
445.gobmk: -D_FILE_OFFSET_BITS=64
456.hmmmer: -D_FILE_OFFSET_BITS=64
458.sjeng: -D_FILE_OFFSET_BITS=64
462.libquantum: -D_FILE_OFFSET_BITS=64 -DSPEC_CPU_LINUX
464.h264ref: -D_FILE_OFFSET_BITS=64
471.omnetpp: -D_FILE_OFFSET_BITS=64
473.astar: -D_FILE_OFFSET_BITS=64
483.xalancbmk: -D_FILE_OFFSET_BITS=64 -DSPEC_CPU_LINUX

Base Optimization Flags

C benchmarks:

-xCORE-AVX512 -ipo -O3 -no-prec-div -qopt-prefetch
-qopt-mem-layout-trans=3

Continued on next page



SPEC CINT2006 Result

Copyright 2006-2017 Standard Performance Evaluation Corporation

Lenovo Global Technology

SPECint_rate2006 = 2220

ThinkSystem SR630
(2.10 GHz, Intel Xeon Platinum 8160T)

SPECint_rate_base2006 = 2110

CPU2006 license: 9017

Test date: Jul-2017

Test sponsor: Lenovo Global Technology

Hardware Availability: Aug-2017

Tested by: Lenovo Global Technology

Software Availability: Apr-2017

Base Optimization Flags (Continued)

C++ benchmarks:

```
-xCORE-AVX512 -ipo -O3 -no-prec-div -qopt-prefetch
-qopt-mem-layout-trans=3 -Wl,-z,muldefs -L/sh10.2 -lsmartheap
```

Base Other Flags

C benchmarks:

```
403.gcc: -Dalloca=_alloca
```

Peak Compiler Invocation

C benchmarks (except as noted below):

```
icc -m32 -L/opt/intel/compilers_and_libraries_2017/linux/lib/ia32
```

```
400.perlbench: icc -m64
```

```
401.bzip2: icc -m64
```

```
456.hmmer: icc -m64
```

```
458.sjeng: icc -m64
```

C++ benchmarks:

```
icpc -m32 -L/opt/intel/compilers_and_libraries_2017/linux/lib/ia32
```

Peak Portability Flags

```
400.perlbench: -DSPEC_CPU_LP64 -DSPEC_CPU_LINUX_X64
```

```
401.bzip2: -DSPEC_CPU_LP64
```

```
403.gcc: -D_FILE_OFFSET_BITS=64
```

```
429.mcf: -D_FILE_OFFSET_BITS=64
```

```
445.gobmk: -D_FILE_OFFSET_BITS=64
```

```
456.hmmer: -DSPEC_CPU_LP64
```

```
458.sjeng: -DSPEC_CPU_LP64
```

```
462.libquantum: -D_FILE_OFFSET_BITS=64 -DSPEC_CPU_LINUX
```

```
464.h264ref: -D_FILE_OFFSET_BITS=64
```

```
471.omnetpp: -D_FILE_OFFSET_BITS=64
```

```
473.astar: -D_FILE_OFFSET_BITS=64
```

```
483.xalancbmk: -D_FILE_OFFSET_BITS=64 -DSPEC_CPU_LINUX
```



SPEC CINT2006 Result

Copyright 2006-2017 Standard Performance Evaluation Corporation

Lenovo Global Technology

SPECint_rate2006 = 2220

ThinkSystem SR630
(2.10 GHz, Intel Xeon Platinum 8160T)

SPECint_rate_base2006 = 2110

CPU2006 license: 9017

Test date: Jul-2017

Test sponsor: Lenovo Global Technology

Hardware Availability: Aug-2017

Tested by: Lenovo Global Technology

Software Availability: Apr-2017

Peak Optimization Flags

C benchmarks:

400.perlbench: -prof-gen(pass 1) -prof-use(pass 2) -xCORE-AVX512(pass 2)
-par-num-threads=1(pass 1) -ipo(pass 2) -O3(pass 2)
-no-prec-div(pass 2) -auto-ilp32 -qopt-mem-layout-trans=3

401.bzip2: -prof-gen(pass 1) -prof-use(pass 2) -xCORE-AVX512(pass 2)
-par-num-threads=1(pass 1) -ipo(pass 2) -O3(pass 2)
-no-prec-div(pass 2) -qopt-prefetch -auto-ilp32
-qopt-mem-layout-trans=3

403.gcc: -xCORE-AVX512 -ipo -O3 -no-prec-div
-qopt-mem-layout-trans=3

429.mcf: basepeak = yes

445.gobmk: -prof-gen(pass 1) -prof-use(pass 2) -xCORE-AVX512(pass 2)
-par-num-threads=1(pass 1) -ipo(pass 2) -O3(pass 2)
-no-prec-div(pass 2) -qopt-mem-layout-trans=3

456.hmmer: -xCORE-AVX512 -ipo -O3 -no-prec-div -unroll2 -auto-ilp32
-qopt-mem-layout-trans=3

458.sjeng: -prof-gen(pass 1) -prof-use(pass 2) -xCORE-AVX512(pass 2)
-par-num-threads=1(pass 1) -ipo(pass 2) -O3(pass 2)
-no-prec-div(pass 2) -unroll4 -auto-ilp32
-qopt-mem-layout-trans=3

462.libquantum: basepeak = yes

464.h264ref: -prof-gen(pass 1) -prof-use(pass 2) -xCORE-AVX512(pass 2)
-par-num-threads=1(pass 1) -ipo(pass 2) -O3(pass 2)
-no-prec-div(pass 2) -unroll2 -qopt-mem-layout-trans=3

C++ benchmarks:

471.omnetpp: -prof-gen(pass 1) -prof-use(pass 2) -xCORE-AVX512(pass 2)
-par-num-threads=1(pass 1) -ipo(pass 2) -O3(pass 2)
-no-prec-div(pass 2)
-qopt-ra-region-strategy=block
-qopt-mem-layout-trans=3 -Wl,-z,muldefs
-L/sh10.2 -lsmartheap

473.astar: basepeak = yes

483.xalancbmk: basepeak = yes



SPEC CINT2006 Result

Copyright 2006-2017 Standard Performance Evaluation Corporation

Lenovo Global Technology

SPECint_rate2006 = 2220

ThinkSystem SR630
(2.10 GHz, Intel Xeon Platinum 8160T)

SPECint_rate_base2006 = 2110

CPU2006 license: 9017

Test date: Jul-2017

Test sponsor: Lenovo Global Technology

Hardware Availability: Aug-2017

Tested by: Lenovo Global Technology

Software Availability: Apr-2017

Peak Other Flags

C benchmarks:

403.gcc: -Dalloca=_alloca

The flags files that were used to format this result can be browsed at

<http://www.spec.org/cpu2006/flags/Intel-ic17.0-official-linux64-revF.html>

<http://www.spec.org/cpu2006/flags/Lenovo-Platform-Flags-V1.2-SKL-C.20171004.html>

You can also download the XML flags sources by saving the following links:

<http://www.spec.org/cpu2006/flags/Intel-ic17.0-official-linux64-revF.xml>

<http://www.spec.org/cpu2006/flags/Lenovo-Platform-Flags-V1.2-SKL-C.20171004.xml>

SPEC and SPECint are registered trademarks of the Standard Performance Evaluation Corporation. All other brand and product names appearing in this result are trademarks or registered trademarks of their respective holders.

For questions about this result, please contact the tester.
For other inquiries, please contact webmaster@spec.org.

Tested with SPEC CPU2006 v1.2.
Report generated on Wed Oct 4 12:36:07 2017 by SPEC CPU2006 PS/PDF formatter v6932.
Originally published on 3 October 2017.