



SPEC® CINT2006 Result

Copyright 2006-2017 Standard Performance Evaluation Corporation

Huawei

SPECint®_rate2006 = 2810

Huawei 2488 V5 (Intel Xeon Platinum 8153)

SPECint_rate_base2006 = 2640

CPU2006 license: 3175

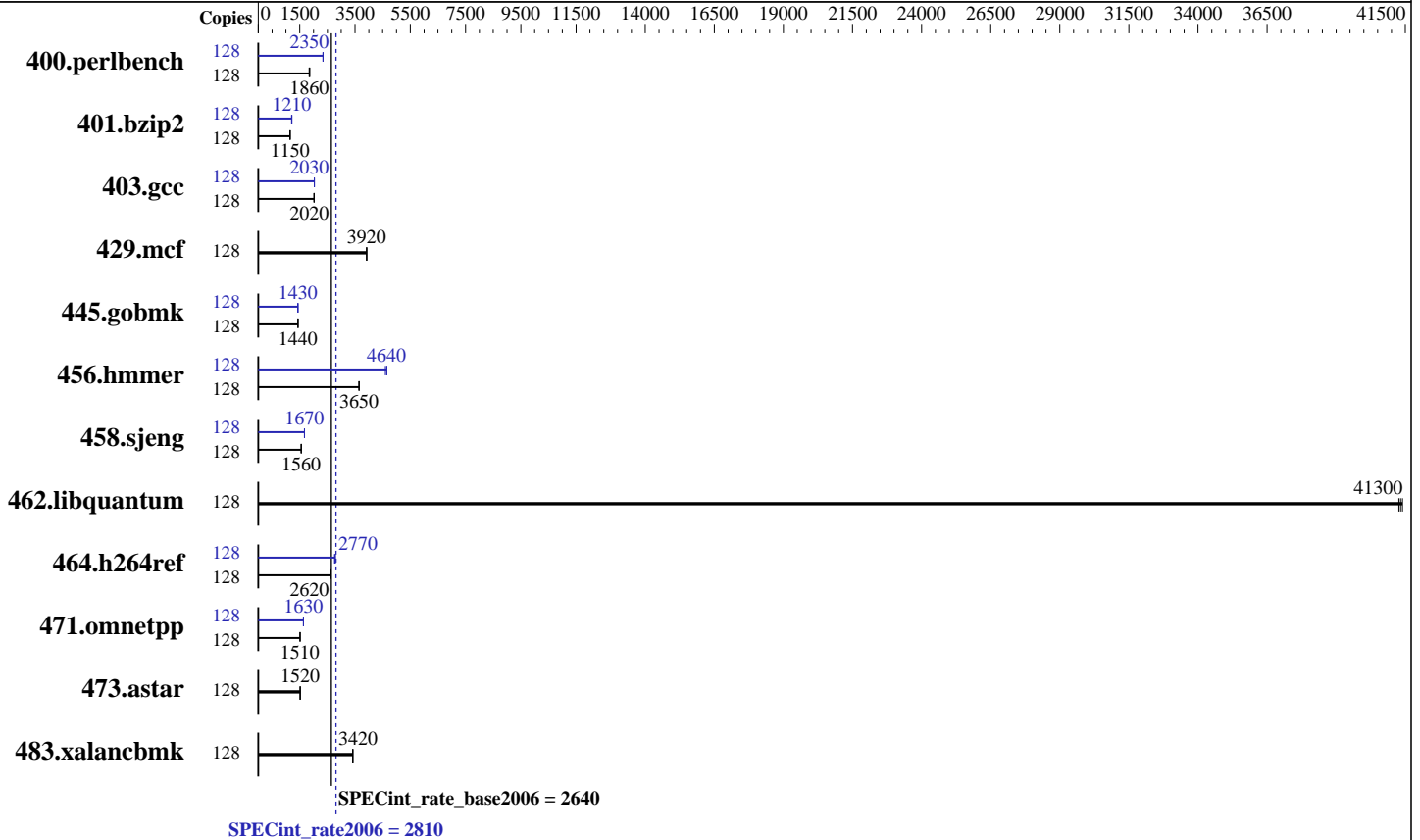
Test date: Aug-2017

Test sponsor: Huawei

Hardware Availability: Aug-2017

Tested by: Huawei

Software Availability: Apr-2017



Hardware

CPU Name: Intel Xeon Platinum 8153
 CPU Characteristics: Intel Turbo Boost Technology up to 2.80 GHz
 CPU MHz: 2000
 FPU: Integrated
 CPU(s) enabled: 64 cores, 4 chips, 16 cores/chip, 2 threads/core
 CPU(s) orderable: 2,4 chip
 Primary Cache: 32 KB I + 32 KB D on chip per core
 Secondary Cache: 1 MB I+D on chip per core
 L3 Cache: 22 MB I+D on chip per chip
 Other Cache: None
 Memory: 384 GB (24 x 16 GB 2Rx4 PC4-2666V-R)
 Disk Subsystem: 2 x 300 GB SAS, 10K RPM
 Other Hardware: None

Software

Operating System: SUSE Linux Enterprise Server 12 SP2 4.4.21-69-default
 Compiler: C/C++: Version 17.0.3.191 of Intel C/C++ Compiler for Linux;
 Fortran: Version 17.0.3.191 of Intel Fortran Compiler for Linux
 Auto Parallel: Yes
 File System: xfs
 System State: Run level 5 (multi user)
 Base Pointers: 32/64-bit
 Peak Pointers: 32/64-bit
 Other Software: None



SPEC CINT2006 Result

Copyright 2006-2017 Standard Performance Evaluation Corporation

Huawei

SPECint_rate2006 = **2810**

Huawei 2488 V5 (Intel Xeon Platinum 8153)

SPECint_rate_base2006 = 2640

CPU2006 license: 3175
Test sponsor: Huawei
Tested by: Huawei

Test date: Aug-2017
Hardware Availability: Aug-2017
Software Availability: Apr-2017

Results Table

Benchmark	Base							Peak						
	Copies	Seconds	Ratio	Seconds	Ratio	Seconds	Ratio	Copies	Seconds	Ratio	Seconds	Ratio	Seconds	Ratio
400.perlbench	128	673	1860	673	1860	680	1840	128	533	2350	535	2340	533	2350
401.bzip2	128	1078	1150	1067	1160	1077	1150	128	1025	1200	1017	1210	1017	1210
403.gcc	128	510	2020	511	2020	510	2020	128	508	2030	508	2030	508	2030
429.mcf	128	297	3920	298	3920	298	3920	128	297	3920	298	3920	298	3920
445.gobmk	128	934	1440	935	1440	935	1440	128	938	1430	936	1440	937	1430
456.hammer	128	327	3650	327	3650	328	3640	128	257	4650	260	4600	257	4640
458.sjeng	128	996	1560	998	1550	995	1560	128	927	1670	928	1670	926	1670
462.libquantum	128	64.1	41400	64.2	41300	64.3	41300	128	64.1	41400	64.2	41300	64.3	41300
464.h264ref	128	1080	2620	1082	2620	1083	2610	128	1014	2790	1024	2770	1025	2760
471.omnetpp	128	530	1510	529	1510	530	1510	128	490	1630	489	1640	490	1630
473.astar	128	593	1520	593	1510	592	1520	128	593	1520	593	1510	592	1520
483.xalancbmk	128	258	3420	258	3420	258	3420	128	258	3420	258	3420	258	3420

Results appear in the order in which they were run. Bold underlined text indicates a median measurement.

Submit Notes

The numactl mechanism was used to bind copies to processors. The config file option 'submit' was used to generate numactl commands to bind each copy to a specific processor. For details, please see the config file.

Operating System Notes

Stack size set to unlimited using "ulimit -s unlimited"
Turbo mode set with:
cpupower -c all frequency-set -g performance

Platform Notes

BIOS configuration:
Set SNC to enabled
Set IMC interleaving to 1 way interleave
Sysinfo program /home/cpu2006/config/sysinfo.rev6993
Revision 6993 of 2015-11-06 (b5e8d4b4eb51ed28d7f98696cbe290c1)
running on linux-va9t Wed Aug 30 19:04:43 2017

This section contains SUT (System Under Test) info as seen by some common utilities. To remove or add to this section, see:
<http://www.spec.org/cpu2006/Docs/config.html#sysinfo>

From /proc/cpuinfo
model name : Intel(R) Xeon(R) Platinum 8153 CPU @ 2.00GHz
4 "physical id"s (chips)
128 "processors"

Continued on next page



SPEC CINT2006 Result

Copyright 2006-2017 Standard Performance Evaluation Corporation

Huawei

SPECint_rate2006 = 2810

Huawei 2488 V5 (Intel Xeon Platinum 8153)

SPECint_rate_base2006 = 2640

CPU2006 license: 3175

Test sponsor: Huawei

Tested by: Huawei

Test date: Aug-2017

Hardware Availability: Aug-2017

Software Availability: Apr-2017

Platform Notes (Continued)

cores, siblings (Caution: counting these is hw and system dependent. The following excerpts from /proc/cpuinfo might not be reliable. Use with caution.)

```

cpu cores : 16
siblings  : 32
physical 0: cores 0 1 2 3 4 5 6 7 8 9 10 11 12 13 14 15
physical 1: cores 0 1 2 3 4 5 6 7 8 9 10 11 12 13 14 15
physical 2: cores 0 1 2 3 4 5 6 7 8 9 10 11 12 13 14 15
physical 3: cores 0 1 2 3 4 5 6 7 8 9 10 11 12 13 14 15
cache size : 22528 KB

```

From /proc/meminfo

MemTotal: 394387292 kB

HugePages_Total: 0

Hugepagesize: 2048 kB

/usr/bin/lsc_release -d

SUSE Linux Enterprise Server 12 SP2

From /etc/*release* /etc/*version*

SuSE-release:

SUSE Linux Enterprise Server 12 (x86_64)

VERSION = 12

PATCHLEVEL = 2

This file is deprecated and will be removed in a future service pack or release.

Please check /etc/os-release for details about this release.

os-release:

NAME="SLES"

VERSION="12-SP2"

VERSION_ID="12.2"

PRETTY_NAME="SUSE Linux Enterprise Server 12 SP2"

ID="sles"

ANSI_COLOR="0;32"

CPE_NAME="cpe:/o:suse:sles:12:sp2"

uname -a:

Linux linux-va9t 4.4.21-69-default #1 SMP Tue Oct 25 10:58:20 UTC 2016 (9464f67) x86_64 x86_64 x86_64 GNU/Linux

run-level 5 Aug 30 18:59

SPEC is set to: /home/cpu2006

Filesystem Type Size Used Avail Use% Mounted on

/dev/sda4 xfs 516G 17G 499G 4% /home

Additional information from dmidecode:

Warning: Use caution when you interpret this section. The 'dmidecode' program reads system data which is "intended to allow hardware to be accurately determined", but the intent may not be met, as there are frequent changes to hardware, firmware, and the "DMTF SMBIOS" standard.

Continued on next page



SPEC CINT2006 Result

Copyright 2006-2017 Standard Performance Evaluation Corporation

Huawei

SPECint_rate2006 = 2810

Huawei 2488 V5 (Intel Xeon Platinum 8153)

SPECint_rate_base2006 = 2640

CPU2006 license: 3175
Test sponsor: Huawei
Tested by: Huawei

Test date: Aug-2017
Hardware Availability: Aug-2017
Software Availability: Apr-2017

Platform Notes (Continued)

BIOS INSYDE Corp. 0.38 07/28/2017

Memory:

8x NO DIMM NO DIMM

24x Samsung M393A2K43BB1-CTD 16 GB 2 rank 2666 MHz

(End of data from sysinfo program)

General Notes

Environment variables set by runspec before the start of the run:

LD_LIBRARY_PATH = "/home/cpu2006/lib/ia32:/home/cpu2006/lib/intel64:/home/cpu2006/sh10.2"

Binaries compiled on a system with 1x Intel Core i7-4790 CPU + 32GB RAM
memory using Redhat Enterprise Linux 7.2

Transparent Huge Pages enabled by default

Filesystem page cache cleared with:

shell invocation of 'sync; echo 3 > /proc/sys/vm/drop_caches' prior to run

runspec command invoked through numactl i.e.:

numactl --interleave=all runspec <etc>

Base Compiler Invocation

C benchmarks:

icc -m32 -L/opt/intel/compilers_and_libraries_2017/linux/lib/ia32

C++ benchmarks:

icpc -m32 -L/opt/intel/compilers_and_libraries_2017/linux/lib/ia32

Base Portability Flags

400.perlbench: -D_FILE_OFFSET_BITS=64 -DSPEC_CPU_LINUX_IA32
401.bzip2: -D_FILE_OFFSET_BITS=64
403.gcc: -D_FILE_OFFSET_BITS=64
429.mcf: -D_FILE_OFFSET_BITS=64
445.gobmk: -D_FILE_OFFSET_BITS=64
456.hmmer: -D_FILE_OFFSET_BITS=64
458.sjeng: -D_FILE_OFFSET_BITS=64
462.libquantum: -D_FILE_OFFSET_BITS=64 -DSPEC_CPU_LINUX
464.h264ref: -D_FILE_OFFSET_BITS=64
471.omnetpp: -D_FILE_OFFSET_BITS=64
473.astar: -D_FILE_OFFSET_BITS=64
483.xalanbmk: -D_FILE_OFFSET_BITS=64 -DSPEC_CPU_LINUX



SPEC CINT2006 Result

Copyright 2006-2017 Standard Performance Evaluation Corporation

Huawei

SPECint_rate2006 = 2810

Huawei 2488 V5 (Intel Xeon Platinum 8153)

SPECint_rate_base2006 = 2640

CPU2006 license: 3175
Test sponsor: Huawei
Tested by: Huawei

Test date: Aug-2017
Hardware Availability: Aug-2017
Software Availability: Apr-2017

Base Optimization Flags

C benchmarks:

-xCORE-AVX512 -ipo -O3 -no-prec-div -qopt-prefetch
-qopt-mem-layout-trans=3

C++ benchmarks:

-xCORE-AVX512 -ipo -O3 -no-prec-div -qopt-prefetch
-qopt-mem-layout-trans=3 -Wl,-z,muldefs -L/sh10.2 -lsmartheap

Base Other Flags

C benchmarks:

403.gcc: -Dalloca=_alloca

Peak Compiler Invocation

C benchmarks (except as noted below):

icc -m32 -L/opt/intel/compilers_and_libraries_2017/linux/lib/ia32

400.perlbench: icc -m64

401.bzip2: icc -m64

456.hmmer: icc -m64

458.sjeng: icc -m64

C++ benchmarks:

icpc -m32 -L/opt/intel/compilers_and_libraries_2017/linux/lib/ia32

Peak Portability Flags

400.perlbench: -DSPEC_CPU_LP64 -DSPEC_CPU_LINUX_X64

401.bzip2: -DSPEC_CPU_LP64

403.gcc: -D_FILE_OFFSET_BITS=64

429.mcf: -D_FILE_OFFSET_BITS=64

445.gobmk: -D_FILE_OFFSET_BITS=64

456.hmmer: -DSPEC_CPU_LP64

458.sjeng: -DSPEC_CPU_LP64

462.libquantum: -D_FILE_OFFSET_BITS=64 -DSPEC_CPU_LINUX

464.h264ref: -D_FILE_OFFSET_BITS=64

471.omnetpp: -D_FILE_OFFSET_BITS=64

473.astar: -D_FILE_OFFSET_BITS=64

Continued on next page



SPEC CINT2006 Result

Copyright 2006-2017 Standard Performance Evaluation Corporation

Huawei

SPECint_rate2006 = 2810

Huawei 2488 V5 (Intel Xeon Platinum 8153)

SPECint_rate_base2006 = 2640

CPU2006 license: 3175
Test sponsor: Huawei
Tested by: Huawei

Test date: Aug-2017
Hardware Availability: Aug-2017
Software Availability: Apr-2017

Peak Portability Flags (Continued)

483.xalancbmk: -D_FILE_OFFSET_BITS=64 -DSPEC_CPU_LINUX

Peak Optimization Flags

C benchmarks:

400.perlbench: -prof-gen(pass 1) -prof-use(pass 2) -xCORE-AVX512(pass 2)
-par-num-threads=1(pass 1) -ipo(pass 2) -O3(pass 2)
-no-prec-div(pass 2) -auto-ilp32 -qopt-mem-layout-trans=3

401.bzip2: -prof-gen(pass 1) -prof-use(pass 2) -xCORE-AVX512(pass 2)
-par-num-threads=1(pass 1) -ipo(pass 2) -O3(pass 2)
-no-prec-div(pass 2) -qopt-prefetch -auto-ilp32
-qopt-mem-layout-trans=3

403.gcc: -xCORE-AVX512 -ipo -O3 -no-prec-div
-qopt-mem-layout-trans=3

429.mcf: basepeak = yes

445.gobmk: -prof-gen(pass 1) -prof-use(pass 2) -xCORE-AVX512(pass 2)
-par-num-threads=1(pass 1) -ipo(pass 2) -O3(pass 2)
-no-prec-div(pass 2) -qopt-mem-layout-trans=3

456.hmmmer: -xCORE-AVX512 -ipo -O3 -no-prec-div -unroll2 -auto-ilp32
-qopt-mem-layout-trans=3

458.sjeng: -prof-gen(pass 1) -prof-use(pass 2) -xCORE-AVX512(pass 2)
-par-num-threads=1(pass 1) -ipo(pass 2) -O3(pass 2)
-no-prec-div(pass 2) -unroll4 -auto-ilp32
-qopt-mem-layout-trans=3

462.libquantum: basepeak = yes

464.h264ref: -prof-gen(pass 1) -prof-use(pass 2) -xCORE-AVX512(pass 2)
-par-num-threads=1(pass 1) -ipo(pass 2) -O3(pass 2)
-no-prec-div(pass 2) -unroll2 -qopt-mem-layout-trans=3

C++ benchmarks:

471.omnetpp: -prof-gen(pass 1) -prof-use(pass 2) -xCORE-AVX512(pass 2)
-par-num-threads=1(pass 1) -ipo(pass 2) -O3(pass 2)
-no-prec-div(pass 2)
-qopt-ra-region-strategy=block
-qopt-mem-layout-trans=3 -Wl,-z,muldefs
-L/sh10.2 -lsmartheap

Continued on next page



SPEC CINT2006 Result

Copyright 2006-2017 Standard Performance Evaluation Corporation

Huawei

SPECint_rate2006 = 2810

Huawei 2488 V5 (Intel Xeon Platinum 8153)

SPECint_rate_base2006 = 2640

CPU2006 license: 3175

Test date: Aug-2017

Test sponsor: Huawei

Hardware Availability: Aug-2017

Tested by: Huawei

Software Availability: Apr-2017

Peak Optimization Flags (Continued)

473.astar: basepeak = yes

483.xalancbmk: basepeak = yes

Peak Other Flags

C benchmarks:

403.gcc: -Dalloca=_alloca

The flags files that were used to format this result can be browsed at

<http://www.spec.org/cpu2006/flags/Intel-ic17.0-official-linux64-revF.html>

<http://www.spec.org/cpu2006/flags/Huawei-Platform-Settings-SKL-V1.6.html>

You can also download the XML flags sources by saving the following links:

<http://www.spec.org/cpu2006/flags/Intel-ic17.0-official-linux64-revF.xml>

<http://www.spec.org/cpu2006/flags/Huawei-Platform-Settings-SKL-V1.6.xml>

SPEC and SPECint are registered trademarks of the Standard Performance Evaluation Corporation. All other brand and product names appearing in this result are trademarks or registered trademarks of their respective holders.

For questions about this result, please contact the tester.
For other inquiries, please contact webmaster@spec.org.

Tested with SPEC CPU2006 v1.2.

Report generated on Wed Sep 20 11:01:57 2017 by SPEC CPU2006 PS/PDF formatter v6932.

Originally published on 19 September 2017.