



SPEC® CFP2006 Result

Copyright 2006-2017 Standard Performance Evaluation Corporation

Huawei

SPECfp®2006 = 108

Huawei 2288H V5 (Intel Xeon Silver 4108)

SPECfp_base2006 = 102

CPU2006 license: 3175

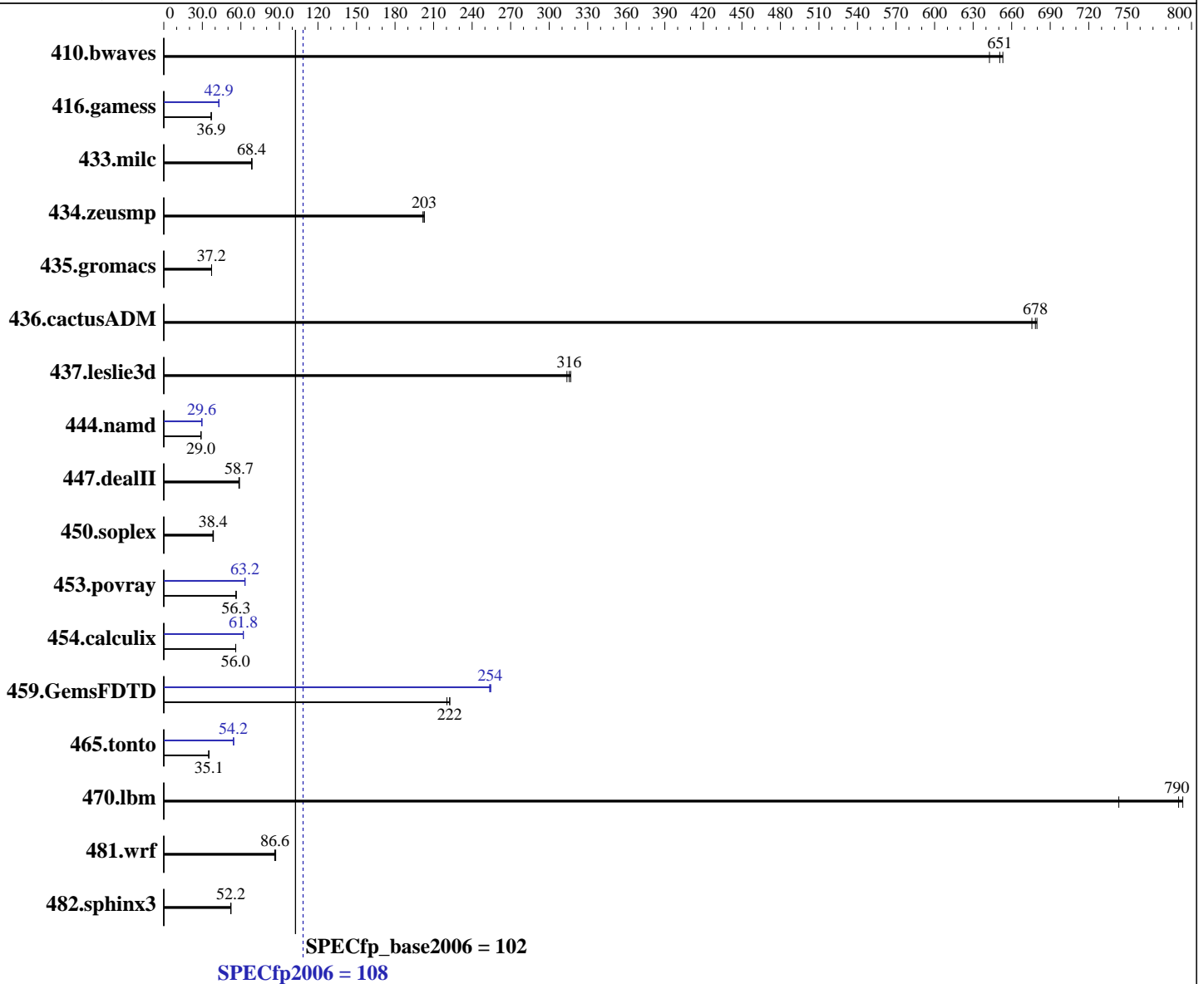
Test sponsor: Huawei

Tested by: Huawei

Test date: Jul-2017

Hardware Availability: Sep-2017

Software Availability: Nov-2016



SPECfp2006 = 108

Hardware

CPU Name: Intel Xeon Silver 4108
 CPU Characteristics: Intel Turbo Boost Technology up to 3.00 GHz
 CPU MHz: 1800
 FPU: Integrated
 CPU(s) enabled: 16 cores, 2 chips, 8 cores/chip
 CPU(s) orderable: 1,2 chip
 Primary Cache: 32 KB I + 32 KB D on chip per core
 Secondary Cache: 1 MB I+D on chip per core

Continued on next page

Software

Operating System: Red Hat Enterprise Linux Server release 7.3 (Maipo)
 3.10.0-514.el7.x86_64
 Compiler: C/C++: Version 17.0.0.098 of Intel C/C++ Compiler for Linux;
 Fortran: Version 17.0.0.098 of Intel Fortran Compiler for Linux
 Auto Parallel: Yes
 File System: xfs

Continued on next page



SPEC CFP2006 Result

Copyright 2006-2017 Standard Performance Evaluation Corporation

Huawei

SPECfp2006 = **108**

Huawei 2288H V5 (Intel Xeon Silver 4108)

SPECfp_base2006 = **102**

CPU2006 license: 3175

Test sponsor: Huawei

Tested by: Huawei

Test date: Jul-2017

Hardware Availability: Sep-2017

Software Availability: Nov-2016

L3 Cache: 11 MB I+D on chip per chip
 Other Cache: None
 Memory: 384 GB (24 x 16 GB 2Rx8 PC4-2666V-R, running at 2400 MHz)
 Disk Subsystem: 1 x 1200 GB SAS, 10000 RPM
 Other Hardware: None

System State: Run level 3 (multi-user)
 Base Pointers: 64-bit
 Peak Pointers: 32/64-bit
 Other Software: None

Results Table

Benchmark	Base						Peak					
	Seconds	Ratio	Seconds	Ratio	Seconds	Ratio	Seconds	Ratio	Seconds	Ratio	Seconds	Ratio
410.bwaves	20.9	651	21.1	643	20.8	653	20.9	651	21.1	643	20.8	653
416.gamess	530	37.0	530	36.9	530	36.9	456	42.9	457	42.9	456	42.9
433.milc	134	68.4	134	68.7	134	68.3	134	68.4	134	68.7	134	68.3
434.zeusmp	45.1	202	44.9	203	44.9	203	45.1	202	44.9	203	44.9	203
435.gromacs	192	37.2	192	37.2	192	37.2	192	37.2	192	37.2	192	37.2
436.cactusADM	17.7	676	17.6	678	17.6	680	17.7	676	17.6	678	17.6	680
437.leslie3d	29.8	316	29.7	317	30.0	314	29.8	316	29.7	317	30.0	314
444.namd	277	29.0	277	29.0	277	29.0	271	29.6	271	29.6	271	29.6
447.dealII	194	58.9	195	58.7	196	58.4	194	58.9	195	58.7	196	58.4
450.soplex	217	38.4	216	38.6	218	38.3	217	38.4	216	38.6	218	38.3
453.povray	94.7	56.2	94.5	56.3	94.4	56.4	84.2	63.1	84.2	63.2	84.1	63.3
454.calculix	147	56.0	147	56.0	147	56.0	133	62.0	133	61.8	133	61.8
459.GemsFDTD	47.7	223	47.7	222	48.1	220	41.8	254	41.8	254	41.7	255
465.tonto	280	35.1	280	35.1	282	34.9	181	54.4	181	54.2	182	54.2
470.lbm	17.4	790	17.3	793	18.5	743	17.4	790	17.3	793	18.5	743
481.wrf	129	86.6	128	87.1	129	86.3	129	86.6	128	87.1	129	86.3
482.sphinx3	374	52.1	374	52.2	373	52.3	374	52.1	374	52.2	373	52.3

Results appear in the order in which they were run. Bold underlined text indicates a median measurement.

Operating System Notes

Stack size set to unlimited using "ulimit -s unlimited"

Platform Notes

BIOS configuration:
 Set Power Efficiency Mode to Custom
 Set Hyper-Threading to Disable
 Sysinfo program /spec17/config/sysinfo.rev6993
 Revision 6993 of 2015-11-06 (b5e8d4b4eb51ed28d7f98696cbe290c1)
 running on localhost.localdomain Wed Aug 2 11:30:44 2017

This section contains SUT (System Under Test) info as seen by some common utilities. To remove or add to this section, see:

Continued on next page



SPEC CFP2006 Result

Copyright 2006-2017 Standard Performance Evaluation Corporation

Huawei

SPECfp2006 = 108

Huawei 2288H V5 (Intel Xeon Silver 4108)

SPECfp_base2006 = 102

CPU2006 license: 3175

Test sponsor: Huawei

Tested by: Huawei

Test date: Jul-2017

Hardware Availability: Sep-2017

Software Availability: Nov-2016

Platform Notes (Continued)

<http://www.spec.org/cpu2006/Docs/config.html#sysinfo>

From /proc/cpuinfo

model name : Intel(R) Xeon(R) Silver 4108 CPU @ 1.80GHz

2 "physical id"s (chips)

16 "processors"

cores, siblings (Caution: counting these is hw and system dependent. The following excerpts from /proc/cpuinfo might not be reliable. Use with caution.)

cpu cores : 8

siblings : 8

physical 0: cores 0 1 2 3 4 5 6 7

physical 1: cores 0 1 2 3 4 5 6 7

cache size : 11264 KB

From /proc/meminfo

MemTotal: 394145204 kB

HugePages_Total: 0

Hugepagesize: 2048 kB

From /etc/*release* /etc/*version*

os-release:

NAME="Red Hat Enterprise Linux Server"

VERSION="7.3 (Maipo)"

ID="rhel"

ID_LIKE="fedora"

VERSION_ID="7.3"

PRETTY_NAME="Red Hat Enterprise Linux Server 7.3 (Maipo)"

ANSI_COLOR="0;31"

CPE_NAME="cpe:/o:redhat:enterprise_linux:7.3:GA:server"

redhat-release: Red Hat Enterprise Linux Server release 7.3 (Maipo)

system-release: Red Hat Enterprise Linux Server release 7.3 (Maipo)

system-release-cpe: cpe:/o:redhat:enterprise_linux:7.3:ga:server

uname -a:

Linux localhost.localdomain 3.10.0-514.el7.x86_64 #1 SMP Wed Oct 19 11:24:13

EDT 2016 x86_64 x86_64 x86_64 GNU/Linux

run-level 3 Aug 1 13:31

SPEC is set to: /spec17

Filesystem Type Size Used Avail Use% Mounted on

/dev/sda2 xfs 898G 18G 881G 2% /

Additional information from dmidecode:

Warning: Use caution when you interpret this section. The 'dmidecode' program reads system data which is "intended to allow hardware to be accurately determined", but the intent may not be met, as there are frequent changes to hardware, firmware, and the "DMTF SMBIOS" standard.

BIOS INSYDE Corp. 0.20 07/14/2017

Memory:

Continued on next page



SPEC CFP2006 Result

Copyright 2006-2017 Standard Performance Evaluation Corporation

Huawei

SPECfp2006 = 108

Huawei 2288H V5 (Intel Xeon Silver 4108)

SPECfp_base2006 = 102

CPU2006 license: 3175

Test sponsor: Huawei

Tested by: Huawei

Test date: Jul-2017

Hardware Availability: Sep-2017

Software Availability: Nov-2016

Platform Notes (Continued)

24x Samsung M393A2K43BB1-CTD 16 GB 2 rank 2666 MHz, configured at 2400 MHz

(End of data from sysinfo program)

General Notes

Environment variables set by runspec before the start of the run:

KMP_AFFINITY = "granularity=fine,compact"

LD_LIBRARY_PATH = "/spec17/libs/32:/spec17/libs/64:/spec17/sh10.2"

OMP_NUM_THREADS = "16"

Binaries compiled on a system with 1x Intel Core i7-4790 CPU + 32GB RAM memory using Redhat Enterprise Linux 7.2

Transparent Huge Pages enabled with:

echo always > /sys/kernel/mm/transparent_hugepage/enabled

runspec command invoked through numactl i.e.:

numactl --interleave=all runspec <etc>

Base Compiler Invocation

C benchmarks:

icc -m64

C++ benchmarks:

icpc -m64

Fortran benchmarks:

ifort -m64

Benchmarks using both Fortran and C:

icc -m64 ifort -m64

Base Portability Flags

410.bwaves: -DSPEC_CPU_LP64

416.gamess: -DSPEC_CPU_LP64

433.milc: -DSPEC_CPU_LP64

434.zeusmp: -DSPEC_CPU_LP64

435.gromacs: -DSPEC_CPU_LP64 -nofor_main

436.cactusADM: -DSPEC_CPU_LP64 -nofor_main

437.leslie3d: -DSPEC_CPU_LP64

444.namd: -DSPEC_CPU_LP64

447.dealII: -DSPEC_CPU_LP64

450.soplex: -DSPEC_CPU_LP64

453.povray: -DSPEC_CPU_LP64

454.calculix: -DSPEC_CPU_LP64 -nofor_main

Continued on next page

Standard Performance Evaluation Corporation

info@spec.org

http://www.spec.org/

Page 4



SPEC CFP2006 Result

Copyright 2006-2017 Standard Performance Evaluation Corporation

Huawei

SPECfp2006 = 108

Huawei 2288H V5 (Intel Xeon Silver 4108)

SPECfp_base2006 = 102

CPU2006 license: 3175

Test sponsor: Huawei

Tested by: Huawei

Test date: Jul-2017

Hardware Availability: Sep-2017

Software Availability: Nov-2016

Base Portability Flags (Continued)

459.GemsFDTD: -DSPEC_CPU_LP64
465.tonto: -DSPEC_CPU_LP64
470.lbm: -DSPEC_CPU_LP64
481.wrf: -DSPEC_CPU_LP64 -DSPEC_CPU_CASE_FLAG -DSPEC_CPU_LINUX
482.sphinx3: -DSPEC_CPU_LP64

Base Optimization Flags

C benchmarks:
-xCORE-AVX2 -ipo -O3 -no-prec-div -parallel -qopt-prefetch
C++ benchmarks:
-xCORE-AVX2 -ipo -O3 -no-prec-div -qopt-prefetch
Fortran benchmarks:
-xCORE-AVX2 -ipo -O3 -no-prec-div -parallel -qopt-prefetch
Benchmarks using both Fortran and C:
-xCORE-AVX2 -ipo -O3 -no-prec-div -parallel -qopt-prefetch

Peak Compiler Invocation

C benchmarks:
icc -m64
C++ benchmarks:
icpc -m64
Fortran benchmarks:
ifort -m64
Benchmarks using both Fortran and C:
icc -m64 ifort -m64

Peak Portability Flags

Same as Base Portability Flags

Peak Optimization Flags

C benchmarks:

Continued on next page



SPEC CFP2006 Result

Copyright 2006-2017 Standard Performance Evaluation Corporation

Huawei

SPECfp2006 = 108

Huawei 2288H V5 (Intel Xeon Silver 4108)

SPECfp_base2006 = 102

CPU2006 license: 3175

Test sponsor: Huawei

Tested by: Huawei

Test date: Jul-2017

Hardware Availability: Sep-2017

Software Availability: Nov-2016

Peak Optimization Flags (Continued)

433.milc: basepeak = yes

470.lbm: basepeak = yes

482.sphinx3: basepeak = yes

C++ benchmarks:

444.namd: -prof-gen(pass 1) -prof-use(pass 2) -xCORE-AVX2(pass 2)
-par-num-threads=1(pass 1) -ipo(pass 2) -O3(pass 2)
-no-prec-div(pass 2) -fno-alias -auto-ilp32

447.dealIII: basepeak = yes

450.soplex: basepeak = yes

453.povray: -prof-gen(pass 1) -prof-use(pass 2) -xCORE-AVX2(pass 2)
-par-num-threads=1(pass 1) -ipo(pass 2) -O3(pass 2)
-no-prec-div(pass 2) -unroll4 -ansi-alias

Fortran benchmarks:

410.bwaves: basepeak = yes

416.gamess: -prof-gen(pass 1) -prof-use(pass 2) -xCORE-AVX2(pass 2)
-par-num-threads=1(pass 1) -ipo(pass 2) -O3(pass 2)
-no-prec-div(pass 2) -unroll2 -inline-level=0 -scalar-rep-

434.zeusmp: basepeak = yes

437.leslie3d: basepeak = yes

459.GemsFDTD: -prof-gen(pass 1) -prof-use(pass 2) -xCORE-AVX2(pass 2)
-par-num-threads=1(pass 1) -ipo(pass 2) -O3(pass 2)
-no-prec-div(pass 2) -unroll2 -inline-level=0
-qopt-prefetch -parallel

465.tonto: -prof-gen(pass 1) -prof-use(pass 2) -xCORE-AVX2(pass 2)
-par-num-threads=1(pass 1) -ipo(pass 2) -O3(pass 2)
-no-prec-div(pass 2) -inline-calloc -qopt-malloc-options=3
-auto -unroll4

Benchmarks using both Fortran and C:

435.gromacs: basepeak = yes

436.cactusADM: basepeak = yes

454.calculix: -xCORE-AVX2 -ipo -O3 -no-prec-div -auto-ilp32

Continued on next page



SPEC CFP2006 Result

Copyright 2006-2017 Standard Performance Evaluation Corporation

Huawei

SPECfp2006 = 108

Huawei 2288H V5 (Intel Xeon Silver 4108)

SPECfp_base2006 = 102

CPU2006 license: 3175

Test sponsor: Huawei

Tested by: Huawei

Test date: Jul-2017

Hardware Availability: Sep-2017

Software Availability: Nov-2016

Peak Optimization Flags (Continued)

481.wrf: basepeak = yes

The flags files that were used to format this result can be browsed at

<http://www.spec.org/cpu2006/flags/Intel-ic17.0-official-linux64.html>

<http://www.spec.org/cpu2006/flags/Huawei-Platform-Settings-SKL-V1.6.html>

You can also download the XML flags sources by saving the following links:

<http://www.spec.org/cpu2006/flags/Intel-ic17.0-official-linux64.xml>

<http://www.spec.org/cpu2006/flags/Huawei-Platform-Settings-SKL-V1.6.xml>

SPEC and SPECfp are registered trademarks of the Standard Performance Evaluation Corporation. All other brand and product names appearing in this result are trademarks or registered trademarks of their respective holders.

For questions about this result, please contact the tester.
For other inquiries, please contact webmaster@spec.org.

Tested with SPEC CPU2006 v1.2.
Report generated on Wed Sep 6 11:45:56 2017 by SPEC CPU2006 PS/PDF formatter v6932.
Originally published on 5 September 2017.