



SPEC[®] CINT2006 Result

Copyright 2006-2017 Standard Performance Evaluation Corporation

Dell Inc.

PowerEdge C6420 (Intel Xeon Platinum 8168, 2.70 GHz)

SPECint[®]_rate2006 = 2460

SPECint_rate_base2006 = 2360

CPU2006 license: 55

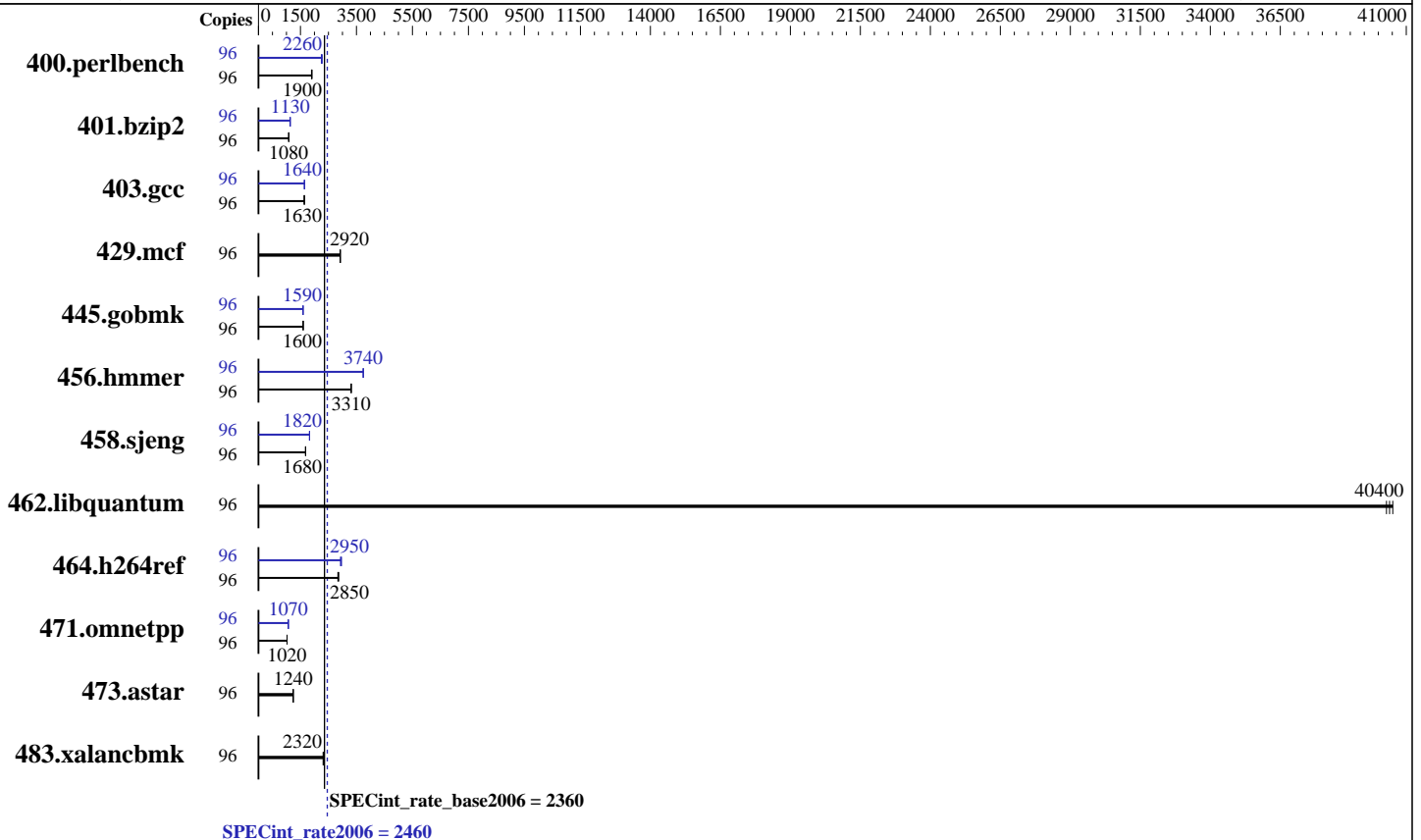
Test sponsor: Dell Inc.

Tested by: Dell Inc.

Test date: May-2017

Hardware Availability: Jul-2017

Software Availability: Nov-2016



Hardware

CPU Name: Intel Xeon Platinum 8168
 CPU Characteristics: Intel Turbo Boost Technology up to 3.70 GHz
 CPU MHz: 2700
 FPU: Integrated
 CPU(s) enabled: 48 cores, 2 chips, 24 cores/chip, 2 threads/core
 CPU(s) orderable: 1,2 chip
 Primary Cache: 32 KB I + 32 KB D on chip per core
 Secondary Cache: 1 MB I+D on chip per core
 L3 Cache: 33 MB I+D on chip per chip
 Other Cache: None
 Memory: 384 GB (12 x 32 GB 2Rx8 PC4-2666V-R)
 Disk Subsystem: 1 x 960 GB SATA SSD
 Other Hardware: None

Software

Operating System: SUSE Linux Enterprise Server 12 SP2 (x86_64) 4.4.21-69-default
 Compiler: C/C++: Version 17.0.3.191 of Intel C/C++ Compiler for Linux
 Auto Parallel: Yes
 File System: ext4
 System State: Run level 3 (multi-user)
 Base Pointers: 32-bit
 Peak Pointers: 32/64-bit
 Other Software: Microquill SmartHeap V10.2



SPEC CINT2006 Result

Copyright 2006-2017 Standard Performance Evaluation Corporation

Dell Inc.

SPECint_rate2006 = 2460

PowerEdge C6420 (Intel Xeon Platinum 8168, 2.70 GHz)

SPECint_rate_base2006 = 2360

CPU2006 license: 55

Test date: May-2017

Test sponsor: Dell Inc.

Hardware Availability: Jul-2017

Tested by: Dell Inc.

Software Availability: Nov-2016

Results Table

Benchmark	Base							Peak						
	Copies	Seconds	Ratio	Seconds	Ratio	Seconds	Ratio	Copies	Seconds	Ratio	Seconds	Ratio	Seconds	Ratio
400.perlbench	96	490	1910	494	1900	495	1890	96	412	2280	417	2250	416	2260
401.bzip2	96	858	1080	857	1080	852	1090	96	814	1140	821	1130	818	1130
403.gcc	96	470	1650	473	1630	473	1630	96	470	1640	470	1640	471	1640
429.mcf	96	300	2920	300	2920	300	2920	96	300	2920	300	2920	300	2920
445.gobmk	96	631	1600	631	1600	631	1600	96	632	1590	633	1590	633	1590
456.hammer	96	270	3310	270	3310	271	3310	96	239	3750	239	3740	239	3740
458.sjeng	96	690	1680	689	1690	691	1680	96	637	1820	637	1820	636	1830
462.libquantum	96	49.1	40500	49.4	40300	49.2	40400	96	49.1	40500	49.4	40300	49.2	40400
464.h264ref	96	744	2850	749	2840	742	2860	96	716	2970	725	2930	721	2950
471.omnetpp	96	588	1020	588	1020	587	1020	96	563	1070	563	1070	563	1070
473.astar	96	543	1240	543	1240	544	1240	96	543	1240	543	1240	544	1240
483.xalancbmk	96	287	2310	285	2320	285	2320	96	287	2310	285	2320	285	2320

Results appear in the order in which they were run. Bold underlined text indicates a median measurement.

Submit Notes

The numactl mechanism was used to bind copies to processors. The config file option 'submit' was used to generate numactl commands to bind each copy to a specific processor. For details, please see the config file.

Operating System Notes

Stack size set to unlimited using "ulimit -s unlimited"

Platform Notes

BIOS settings:
 Sub NUMA Cluster enabled
 Virtualization Technology disabled
 System Profile set to Custom
 CPU Performance set to Maximum Performance
 C States set to autonomous
 C1E disabled
 Uncore Frequency set to Dynamic
 Energy Efficiency Policy set to Performance
 Memory Patrol Scrub disabled
 Logical Processor enabled
 CPU Interconnect Bus Link Power Management disabled
 PCI ASPM L1 Link Power Management disabled
 Sysinfo program /root/cpu2006-1.2_ic17u3/config/sysinfo.rev6993
 Revision 6993 of 2015-11-06 (b5e8d4b4eb51ed28d7f98696cbe290c1)
 running on linux-fx60 Wed May 24 15:42:14 2017

Continued on next page



SPEC CINT2006 Result

Copyright 2006-2017 Standard Performance Evaluation Corporation

Dell Inc.

SPECint_rate2006 = 2460

PowerEdge C6420 (Intel Xeon Platinum 8168, 2.70 GHz)

SPECint_rate_base2006 = 2360

CPU2006 license: 55

Test date: May-2017

Test sponsor: Dell Inc.

Hardware Availability: Jul-2017

Tested by: Dell Inc.

Software Availability: Nov-2016

Platform Notes (Continued)

This section contains SUT (System Under Test) info as seen by some common utilities. To remove or add to this section, see: <http://www.spec.org/cpu2006/Docs/config.html#sysinfo>

```

From /proc/cpuinfo
model name      : Intel(R) Xeon(R) Platinum 8168 CPU @ 2.70GHz
 2 "physical id"s (chips)
 96 "processors"
cores, siblings (Caution: counting these is hw and system dependent. The
following excerpts from /proc/cpuinfo might not be reliable. Use with
caution.)
  cpu cores    : 24
  siblings     : 48
  physical 0: cores 0 1 2 3 4 5 8 9 10 11 12 13 16 17 18 19 20 21 24 25 26
                27 28 29
  physical 1: cores 0 1 2 3 4 5 8 9 10 11 12 13 16 17 18 19 20 21 24 25 26
                27 28 29
cache size     : 33792 KB

```

```

From /proc/meminfo
MemTotal:      394867844 kB
HugePages_Total: 0
Hugepagesize:  2048 kB

```

```

From /etc/*release* /etc/*version*
SuSE-release:
SUSE Linux Enterprise Server 12 (x86_64)
VERSION = 12
PATCHLEVEL = 2
# This file is deprecated and will be removed in a future service pack or
release.
# Please check /etc/os-release for details about this release.
os-release:
NAME="SLES"
VERSION="12-SP2"
VERSION_ID="12.2"
PRETTY_NAME="SUSE Linux Enterprise Server 12 SP2"
ID="sles"
ANSI_COLOR="0;32"
CPE_NAME="cpe:/o:suse:sles:12:sp2"

```

```

uname -a:
Linux linux-fx60 4.4.21-69-default #1 SMP Tue Oct 25 10:58:20 UTC 2016
(9464f67) x86_64 x86_64 x86_64 GNU/Linux

```

run-level 3 May 23 11:39

```

SPEC is set to: /root/cpu2006-1.2_ic17u3
Filesystem      Type  Size  Used Avail Use% Mounted on
/dev/sda2       ext4  909G   94G  815G  11% /
Additional information from dmidecode:

```

Continued on next page



SPEC CINT2006 Result

Copyright 2006-2017 Standard Performance Evaluation Corporation

Dell Inc.

SPECint_rate2006 = 2460

PowerEdge C6420 (Intel Xeon Platinum 8168, 2.70 GHz)

SPECint_rate_base2006 = 2360

CPU2006 license: 55
Test sponsor: Dell Inc.
Tested by: Dell Inc.

Test date: May-2017
Hardware Availability: Jul-2017
Software Availability: Nov-2016

Platform Notes (Continued)

Warning: Use caution when you interpret this section. The 'dmidecode' program reads system data which is "intended to allow hardware to be accurately determined", but the intent may not be met, as there are frequent changes to hardware, firmware, and the "DMTF SMBIOS" standard.

BIOS Dell Inc. 1.0.0 05/17/2017

Memory:

2x 002C00B3002C 36ASF4G72PZ-2G6D1 32 GB 2 rank 2666 MHz
10x 002C0632002C 36ASF4G72PZ-2G6D1 32 GB 2 rank 2666 MHz
4x Not Specified Not Specified

(End of data from sysinfo program)

General Notes

Environment variables set by runspec before the start of the run:

LD_LIBRARY_PATH = "/root/cpu2006-1.2_icl7u3/lib/ia32:/root/cpu2006-1.2_icl7u3/lib/intel64:/root/cpu2006-1.2_icl7u3/sh10.2"

Binaries compiled on a system with 1x Intel Core i7-4790 CPU + 32GB RAM memory using Redhat Enterprise Linux 7.2

Transparent Huge Pages enabled by default

Filesystem page cache cleared with:

shell invocation of 'sync; echo 3 > /proc/sys/vm/drop_caches' prior to run

runspec command invoked through numactl i.e.:

numactl --interleave=all runspec <etc>

Base Compiler Invocation

C benchmarks:

icc -m32 -L/opt/intel/compilers_and_libraries_2017/linux/lib/ia32

C++ benchmarks:

icpc -m32 -L/opt/intel/compilers_and_libraries_2017/linux/lib/ia32

Base Portability Flags

400.perlbench: -D_FILE_OFFSET_BITS=64 -DSPEC_CPU_LINUX_IA32
401.bzip2: -D_FILE_OFFSET_BITS=64
403.gcc: -D_FILE_OFFSET_BITS=64
429.mcf: -D_FILE_OFFSET_BITS=64
445.gobmk: -D_FILE_OFFSET_BITS=64
456.hmmer: -D_FILE_OFFSET_BITS=64
458.sjeng: -D_FILE_OFFSET_BITS=64
462.libquantum: -D_FILE_OFFSET_BITS=64 -DSPEC_CPU_LINUX
464.h264ref: -D_FILE_OFFSET_BITS=64
471.omnetpp: -D_FILE_OFFSET_BITS=64

Continued on next page



SPEC CINT2006 Result

Copyright 2006-2017 Standard Performance Evaluation Corporation

Dell Inc.

SPECint_rate2006 = 2460

PowerEdge C6420 (Intel Xeon Platinum 8168, 2.70 GHz)

SPECint_rate_base2006 = 2360

CPU2006 license: 55

Test date: May-2017

Test sponsor: Dell Inc.

Hardware Availability: Jul-2017

Tested by: Dell Inc.

Software Availability: Nov-2016

Base Portability Flags (Continued)

473.astar: -D_FILE_OFFSET_BITS=64
483.xalancbmk: -D_FILE_OFFSET_BITS=64 -DSPEC_CPU_LINUX

Base Optimization Flags

C benchmarks:

-xCORE-AVX512 -ipo -O3 -no-prec-div -qopt-prefetch
-qopt-mem-layout-trans=3

C++ benchmarks:

-xCORE-AVX512 -ipo -O3 -no-prec-div -qopt-prefetch
-qopt-mem-layout-trans=3 -Wl,-z,muldefs -L/shl0.2 -lsmartheap

Base Other Flags

C benchmarks:

403.gcc: -Dalloca=_alloca

Peak Compiler Invocation

C benchmarks (except as noted below):

icc -m32 -L/opt/intel/compilers_and_libraries_2017/linux/lib/ia32

400.perlbench: icc -m64

401.bzip2: icc -m64

456.hmmer: icc -m64

458.sjeng: icc -m64

C++ benchmarks:

icpc -m32 -L/opt/intel/compilers_and_libraries_2017/linux/lib/ia32

Peak Portability Flags

400.perlbench: -DSPEC_CPU_LP64 -DSPEC_CPU_LINUX_X64

401.bzip2: -DSPEC_CPU_LP64

403.gcc: -D_FILE_OFFSET_BITS=64

429.mcf: -D_FILE_OFFSET_BITS=64

Continued on next page



SPEC CINT2006 Result

Copyright 2006-2017 Standard Performance Evaluation Corporation

Dell Inc.

SPECint_rate2006 = 2460

PowerEdge C6420 (Intel Xeon Platinum 8168, 2.70 GHz)

SPECint_rate_base2006 = 2360

CPU2006 license: 55

Test date: May-2017

Test sponsor: Dell Inc.

Hardware Availability: Jul-2017

Tested by: Dell Inc.

Software Availability: Nov-2016

Peak Portability Flags (Continued)

445.gobmk: -D_FILE_OFFSET_BITS=64
 456.hmmer: -DSPEC_CPU_LP64
 458.sjeng: -DSPEC_CPU_LP64
 462.libquantum: -D_FILE_OFFSET_BITS=64 -DSPEC_CPU_LINUX
 464.h264ref: -D_FILE_OFFSET_BITS=64
 471.omnetpp: -D_FILE_OFFSET_BITS=64
 473.astar: -D_FILE_OFFSET_BITS=64
 483.xalancbmk: -D_FILE_OFFSET_BITS=64 -DSPEC_CPU_LINUX

Peak Optimization Flags

C benchmarks:

400.perlbench: -prof-gen(pass 1) -prof-use(pass 2) -xCORE-AVX512(pass 2)
 -par-num-threads=1(pass 1) -ipo(pass 2) -O3(pass 2)
 -no-prec-div(pass 2) -auto-ilp32 -qopt-mem-layout-trans=3

401.bzip2: -prof-gen(pass 1) -prof-use(pass 2) -xCORE-AVX512(pass 2)
 -par-num-threads=1(pass 1) -ipo(pass 2) -O3(pass 2)
 -no-prec-div(pass 2) -qopt-prefetch -auto-ilp32
 -qopt-mem-layout-trans=3

403.gcc: -xCORE-AVX512 -ipo -O3 -no-prec-div
 -qopt-mem-layout-trans=3

429.mcf: basepeak = yes

445.gobmk: -prof-gen(pass 1) -prof-use(pass 2) -xCORE-AVX512(pass 2)
 -par-num-threads=1(pass 1) -ipo(pass 2) -O3(pass 2)
 -no-prec-div(pass 2) -qopt-mem-layout-trans=3

456.hmmer: -xCORE-AVX512 -ipo -O3 -no-prec-div -unroll2 -auto-ilp32
 -qopt-mem-layout-trans=3

458.sjeng: -prof-gen(pass 1) -prof-use(pass 2) -xCORE-AVX512(pass 2)
 -par-num-threads=1(pass 1) -ipo(pass 2) -O3(pass 2)
 -no-prec-div(pass 2) -unroll4 -auto-ilp32
 -qopt-mem-layout-trans=3

462.libquantum: basepeak = yes

464.h264ref: -prof-gen(pass 1) -prof-use(pass 2) -xCORE-AVX512(pass 2)
 -par-num-threads=1(pass 1) -ipo(pass 2) -O3(pass 2)
 -no-prec-div(pass 2) -unroll2 -qopt-mem-layout-trans=3

C++ benchmarks:

Continued on next page



SPEC CINT2006 Result

Copyright 2006-2017 Standard Performance Evaluation Corporation

Dell Inc.

PowerEdge C6420 (Intel Xeon Platinum 8168, 2.70 GHz)

SPECint_rate2006 = 2460

SPECint_rate_base2006 = 2360

CPU2006 license: 55

Test sponsor: Dell Inc.

Tested by: Dell Inc.

Test date: May-2017

Hardware Availability: Jul-2017

Software Availability: Nov-2016

Peak Optimization Flags (Continued)

471.omnetpp: -prof-gen(pass 1) -prof-use(pass 2) -xCORE-AVX512(pass 2)
-par-num-threads=1(pass 1) -ipo(pass 2) -O3(pass 2)
-no-prec-div(pass 2)
-qopt-ra-region-strategy=block
-qopt-mem-layout-trans=3 -Wl,-z,muldefs
-L/sh10.2 -lsmartheap

473.astar: basepeak = yes

483.xalancbmk: basepeak = yes

Peak Other Flags

C benchmarks:

403.gcc: -Dalloca=_alloca

The flags files that were used to format this result can be browsed at

<http://www.spec.org/cpu2006/flags/Intel-ic17.0-official-linux64-revF.html>

<http://www.spec.org/cpu2006/flags/Dell-Platform-Flags-PowerEdge14G-revC.html>

You can also download the XML flags sources by saving the following links:

<http://www.spec.org/cpu2006/flags/Intel-ic17.0-official-linux64-revF.xml>

<http://www.spec.org/cpu2006/flags/Dell-Platform-Flags-PowerEdge14G-revC.xml>

SPEC and SPECint are registered trademarks of the Standard Performance Evaluation Corporation. All other brand and product names appearing in this result are trademarks or registered trademarks of their respective holders.

For questions about this result, please contact the tester.
For other inquiries, please contact webmaster@spec.org.

Tested with SPEC CPU2006 v1.2.

Report generated on Wed Aug 23 13:13:20 2017 by SPEC CPU2006 PS/PDF formatter v6932.

Originally published on 22 August 2017.