



SPEC® CINT2006 Result

Copyright 2006-2017 Standard Performance Evaluation Corporation

Dell Inc.

SPECint®_rate2006 = 1940

PowerEdge R940 (Intel Xeon Gold 5115, 2.40 GHz)

SPECint_rate_base2006 = 1840

CPU2006 license: 55

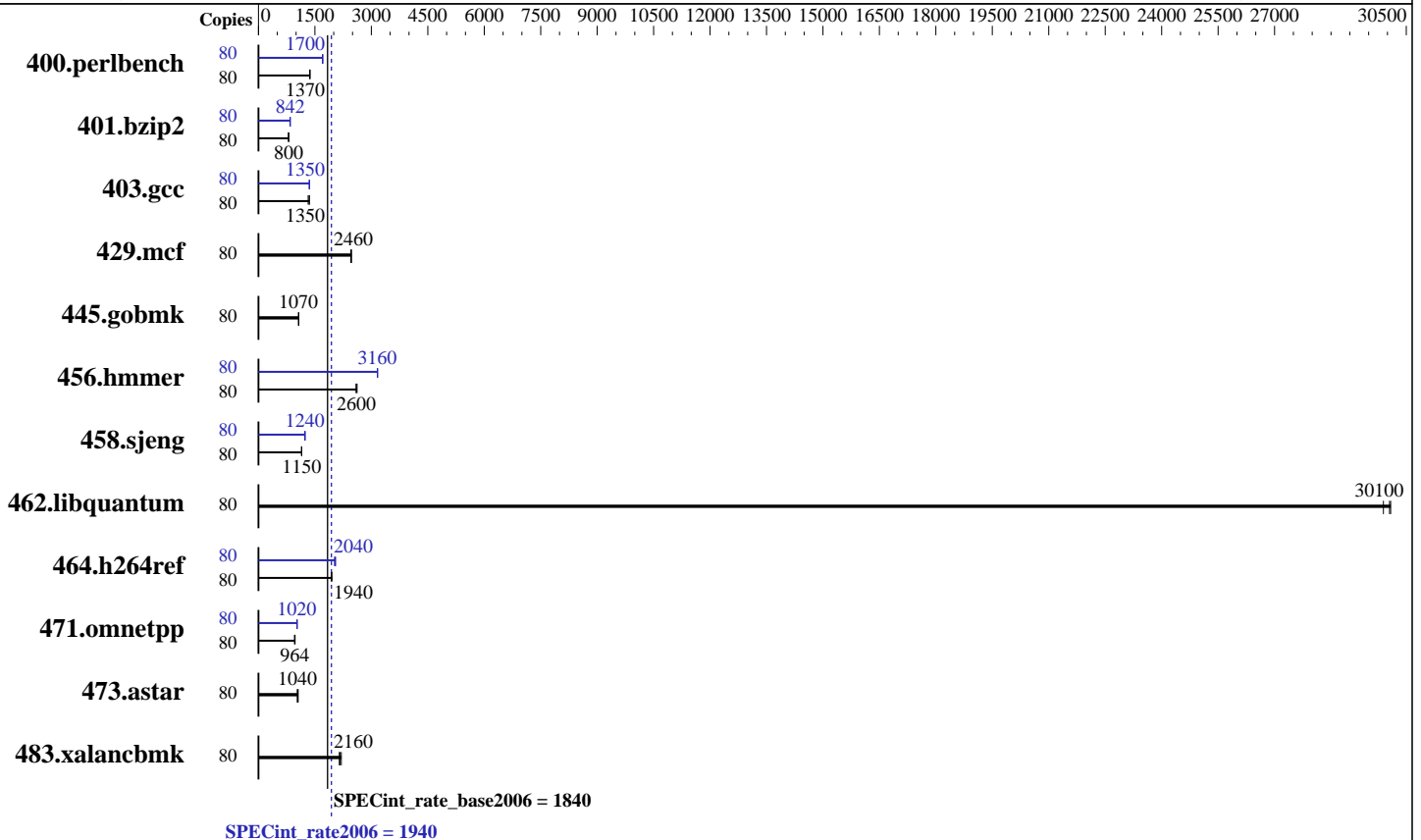
Test date: Jun-2017

Test sponsor: Dell Inc.

Hardware Availability: Jul-2017

Tested by: Dell Inc.

Software Availability: Nov-2016



Hardware

CPU Name: Intel Xeon Gold 5115
 CPU Characteristics: Intel Turbo Boost Technology up to 3.20 GHz
 CPU MHz: 2400
 FPU: Integrated
 CPU(s) enabled: 40 cores, 4 chips, 10 cores/chip, 2 threads/core
 CPU(s) orderable: 2,4 chip
 Primary Cache: 32 KB I + 32 KB D on chip per core
 Secondary Cache: 1 MB I+D on chip per core
 L3 Cache: 13.75 MB I+D on chip per chip
 Other Cache: None
 Memory: 768 GB (48 x 16 GB 2Rx8 PC4-2666V-R, running at 2400 MT/s)
 Disk Subsystem: 1 x 960 GB SATA SSD
 Other Hardware: None

Software

Operating System: SUSE Linux Enterprise Server 12 SP2 4.4.21-69-default
 Compiler: C/C++: Version 17.0.3.191 of Intel C/C++ Compiler for Linux
 Auto Parallel: Yes
 File System: xfs
 System State: Run level 3 (multi-user)
 Base Pointers: 32-bit
 Peak Pointers: 32/64-bit
 Other Software: Microquill SmartHeap V10.2



SPEC CINT2006 Result

Copyright 2006-2017 Standard Performance Evaluation Corporation

Dell Inc.

SPECint_rate2006 = 1940

PowerEdge R940 (Intel Xeon Gold 5115, 2.40 GHz)

SPECint_rate_base2006 = 1840

CPU2006 license: 55

Test date: Jun-2017

Test sponsor: Dell Inc.

Hardware Availability: Jul-2017

Tested by: Dell Inc.

Software Availability: Nov-2016

Results Table

Benchmark	Base							Peak						
	Copies	Seconds	Ratio	Seconds	Ratio	Seconds	Ratio	Copies	Seconds	Ratio	Seconds	Ratio	Seconds	Ratio
400.perlbench	80	573	1360	<u>572</u>	<u>1370</u>	571	1370	80	459	1700	457	1710	<u>459</u>	<u>1700</u>
401.bzip2	80	966	799	<u>965</u>	<u>800</u>	957	807	80	916	843	<u>916</u>	<u>842</u>	918	841
403.gcc	80	488	1320	<u>477</u>	<u>1350</u>	477	1350	80	475	1360	477	1350	<u>476</u>	<u>1350</u>
429.mcf	80	295	2470	297	2450	<u>297</u>	<u>2460</u>	80	295	2470	297	2450	<u>297</u>	<u>2460</u>
445.gobmk	80	786	1070	787	1070	<u>786</u>	<u>1070</u>	80	786	1070	787	1070	<u>786</u>	<u>1070</u>
456.hammer	80	<u>287</u>	<u>2600</u>	288	2600	285	2620	80	236	3160	236	3170	<u>236</u>	<u>3160</u>
458.sjeng	80	<u>844</u>	<u>1150</u>	844	1150	844	1150	80	<u>784</u>	<u>1240</u>	784	1230	783	1240
462.libquantum	80	55.1	30100	<u>55.2</u>	<u>30100</u>	55.5	29900	80	55.1	30100	<u>55.2</u>	<u>30100</u>	55.5	29900
464.h264ref	80	914	1940	<u>913</u>	<u>1940</u>	907	1950	80	876	2020	<u>869</u>	<u>2040</u>	863	2050
471.omnetpp	80	514	973	<u>519</u>	<u>964</u>	521	959	80	485	1030	490	1020	<u>489</u>	<u>1020</u>
473.astar	80	532	1060	<u>539</u>	<u>1040</u>	544	1030	80	532	1060	<u>539</u>	<u>1040</u>	544	1030
483.xalancbmk	80	251	2200	<u>255</u>	<u>2160</u>	257	2150	80	251	2200	<u>255</u>	<u>2160</u>	257	2150

Results appear in the order in which they were run. Bold underlined text indicates a median measurement.

Submit Notes

The numactl mechanism was used to bind copies to processors. The config file option 'submit' was used to generate numactl commands to bind each copy to a specific processor. For details, please see the config file.

Operating System Notes

Stack size set to unlimited using "ulimit -s unlimited"

Platform Notes

BIOS settings:
 Virtualization Technology disabled
 System Profile set to Custom
 CPU Performance set to Maximum Performance
 C States set to autonomous
 C1E disabled
 Uncore Frequency set to Dynamic
 Energy Efficiency Policy set to Performance
 Memory Patrol Scrub disabled
 Logical Processor enabled
 CPU Interconnect Bus Link Power Management disabled
 PCI ASPM L1 Link Power Management disabled
 Sysinfo program /home/cpu2006-1.2_ic17u3/config/sysinfo.rev6993
 Revision 6993 of 2015-11-06 (b5e8d4b4eb51ed28d7f98696cbe290c1)
 running on linux-bl4r Wed Jun 7 21:03:00 2017

This section contains SUT (System Under Test) info as seen by
Continued on next page



SPEC CINT2006 Result

Copyright 2006-2017 Standard Performance Evaluation Corporation

Dell Inc.

SPECint_rate2006 = 1940

PowerEdge R940 (Intel Xeon Gold 5115, 2.40 GHz)

SPECint_rate_base2006 = 1840

CPU2006 license: 55

Test date: Jun-2017

Test sponsor: Dell Inc.

Hardware Availability: Jul-2017

Tested by: Dell Inc.

Software Availability: Nov-2016

Platform Notes (Continued)

some common utilities. To remove or add to this section, see:
<http://www.spec.org/cpu2006/Docs/config.html#sysinfo>

```

From /proc/cpuinfo
  model name : Intel(R) Xeon(R) Gold 5115 CPU @ 2.40GHz
  4 "physical id"s (chips)
  80 "processors"
  cores, siblings (Caution: counting these is hw and system dependent. The
  following excerpts from /proc/cpuinfo might not be reliable. Use with
  caution.)
    cpu cores : 10
    siblings  : 20
    physical 0: cores 0 1 2 3 4 8 9 10 11 12
    physical 1: cores 0 1 2 3 4 8 9 10 11 12
    physical 2: cores 0 1 2 3 4 8 9 10 11 12
    physical 3: cores 0 1 2 3 4 8 9 10 11 12
  cache size : 14080 KB

```

```

From /proc/meminfo
MemTotal:      791969024 kB
HugePages_Total:    0
Hugepagesize:    2048 kB

```

```

/usr/bin/lsb_release -d
SUSE Linux Enterprise Server 12 SP2

```

```

From /etc/*release* /etc/*version*
SuSE-release:
SUSE Linux Enterprise Server 12 (x86_64)
VERSION = 12
PATCHLEVEL = 2
# This file is deprecated and will be removed in a future service pack or
release.
# Please check /etc/os-release for details about this release.
os-release:
NAME="SLES"
VERSION="12-SP2"
VERSION_ID="12.2"
PRETTY_NAME="SUSE Linux Enterprise Server 12 SP2"
ID="sles"
ANSI_COLOR="0;32"
CPE_NAME="cpe:/o:suse:sles:12:sp2"

```

```

uname -a:
Linux linux-bl4r 4.4.21-69-default #1 SMP Tue Oct 25 10:58:20 UTC 2016
(9464f67) x86_64 x86_64 x86_64 GNU/Linux

```

run-level 3 Jun 7 21:02

```

SPEC is set to: /home/cpu2006-1.2_ic17u3
Filesystem      Type  Size  Used Avail Use% Mounted on
/dev/sda4       xfs   852G  25G  827G   3% /home

```

Continued on next page



SPEC CINT2006 Result

Copyright 2006-2017 Standard Performance Evaluation Corporation

Dell Inc.

SPECint_rate2006 = 1940

PowerEdge R940 (Intel Xeon Gold 5115, 2.40 GHz)

SPECint_rate_base2006 = 1840

CPU2006 license: 55

Test date: Jun-2017

Test sponsor: Dell Inc.

Hardware Availability: Jul-2017

Tested by: Dell Inc.

Software Availability: Nov-2016

Platform Notes (Continued)

Additional information from dmidecode:

Warning: Use caution when you interpret this section. The 'dmidecode' program reads system data which is "intended to allow hardware to be accurately determined", but the intent may not be met, as there are frequent changes to hardware, firmware, and the "DMTF SMBIOS" standard.

BIOS Dell Inc. 1.0.3 05/30/2017

Memory:

48x 00CE063200CE M393A2K43BB1-CTD 16 GB 2 rank 2666 MHz, configured at 2400 MHz

(End of data from sysinfo program)

General Notes

Environment variables set by runspec before the start of the run:

LD_LIBRARY_PATH = "/home/cpu2006-1.2_ic17u3/lib/ia32:/home/cpu2006-1.2_ic17u3/lib/intel64:/home/cpu2006-1.2_ic17u3/sh10.2"

Binaries compiled on a system with 1x Intel Core i7-4790 CPU + 32GB RAM memory using Redhat Enterprise Linux 7.2

Transparent Huge Pages enabled by default

Filesystem page cache cleared with:

shell invocation of 'sync; echo 3 > /proc/sys/vm/drop_caches' prior to run

runspec command invoked through numactl i.e.:

numactl --interleave=all runspec <etc>

Base Compiler Invocation

C benchmarks:

icc -m32 -L/opt/intel/compilers_and_libraries_2017/linux/lib/ia32

C++ benchmarks:

icpc -m32 -L/opt/intel/compilers_and_libraries_2017/linux/lib/ia32

Base Portability Flags

400.perlbench: -D_FILE_OFFSET_BITS=64 -DSPEC_CPU_LINUX_IA32
401.bzip2: -D_FILE_OFFSET_BITS=64
403.gcc: -D_FILE_OFFSET_BITS=64
429.mcf: -D_FILE_OFFSET_BITS=64
445.gobmk: -D_FILE_OFFSET_BITS=64
456.hmmer: -D_FILE_OFFSET_BITS=64
458.sjeng: -D_FILE_OFFSET_BITS=64
462.libquantum: -D_FILE_OFFSET_BITS=64 -DSPEC_CPU_LINUX
464.h264ref: -D_FILE_OFFSET_BITS=64

Continued on next page



SPEC CINT2006 Result

Copyright 2006-2017 Standard Performance Evaluation Corporation

Dell Inc.

SPECint_rate2006 = 1940

PowerEdge R940 (Intel Xeon Gold 5115, 2.40 GHz)

SPECint_rate_base2006 = 1840

CPU2006 license: 55

Test date: Jun-2017

Test sponsor: Dell Inc.

Hardware Availability: Jul-2017

Tested by: Dell Inc.

Software Availability: Nov-2016

Base Portability Flags (Continued)

471.omnetpp: -D_FILE_OFFSET_BITS=64
473.aster: -D_FILE_OFFSET_BITS=64
483.xalancbmk: -D_FILE_OFFSET_BITS=64 -DSPEC_CPU_LINUX

Base Optimization Flags

C benchmarks:

-xCORE-AVX512 -ipo -O3 -no-prec-div -qopt-prefetch
-qopt-mem-layout-trans=3

C++ benchmarks:

-xCORE-AVX512 -ipo -O3 -no-prec-div -qopt-prefetch
-qopt-mem-layout-trans=3 -Wl,-z,muldefs -L/sh10.2 -lsmartheap

Base Other Flags

C benchmarks:

403.gcc: -Dalloca=_alloca

Peak Compiler Invocation

C benchmarks (except as noted below):

icc -m32 -L/opt/intel/compilers_and_libraries_2017/linux/lib/ia32

400.perlbench: icc -m64

401.bzip2: icc -m64

456.hmmer: icc -m64

458.sjeng: icc -m64

C++ benchmarks:

icpc -m32 -L/opt/intel/compilers_and_libraries_2017/linux/lib/ia32

Peak Portability Flags

400.perlbench: -DSPEC_CPU_LP64 -DSPEC_CPU_LINUX_X64

401.bzip2: -DSPEC_CPU_LP64

403.gcc: -D_FILE_OFFSET_BITS=64

Continued on next page

Standard Performance Evaluation Corporation

info@spec.org

http://www.spec.org/

Page 5



SPEC CINT2006 Result

Copyright 2006-2017 Standard Performance Evaluation Corporation

Dell Inc.

SPECint_rate2006 = 1940

PowerEdge R940 (Intel Xeon Gold 5115, 2.40 GHz)

SPECint_rate_base2006 = 1840

CPU2006 license: 55

Test date: Jun-2017

Test sponsor: Dell Inc.

Hardware Availability: Jul-2017

Tested by: Dell Inc.

Software Availability: Nov-2016

Peak Portability Flags (Continued)

429.mcf: -D_FILE_OFFSET_BITS=64
 445.gobmk: -D_FILE_OFFSET_BITS=64
 456.hmmer: -DSPEC_CPU_LP64
 458.sjeng: -DSPEC_CPU_LP64
 462.libquantum: -D_FILE_OFFSET_BITS=64 -DSPEC_CPU_LINUX
 464.h264ref: -D_FILE_OFFSET_BITS=64
 471.omnetpp: -D_FILE_OFFSET_BITS=64
 473.astar: -D_FILE_OFFSET_BITS=64
 483.xalancbmk: -D_FILE_OFFSET_BITS=64 -DSPEC_CPU_LINUX

Peak Optimization Flags

C benchmarks:

400.perlbench: -prof-gen(pass 1) -prof-use(pass 2) -xCORE-AVX512(pass 2)
 -par-num-threads=1(pass 1) -ipo(pass 2) -O3(pass 2)
 -no-prec-div(pass 2) -auto-ilp32 -qopt-mem-layout-trans=3

401.bzip2: -prof-gen(pass 1) -prof-use(pass 2) -xCORE-AVX512(pass 2)
 -par-num-threads=1(pass 1) -ipo(pass 2) -O3(pass 2)
 -no-prec-div(pass 2) -qopt-prefetch -auto-ilp32
 -qopt-mem-layout-trans=3

403.gcc: -xCORE-AVX512 -ipo -O3 -no-prec-div
 -qopt-mem-layout-trans=3

429.mcf: basepeak = yes

445.gobmk: basepeak = yes

456.hmmer: -xCORE-AVX512 -ipo -O3 -no-prec-div -unroll2 -auto-ilp32
 -qopt-mem-layout-trans=3

458.sjeng: -prof-gen(pass 1) -prof-use(pass 2) -xCORE-AVX512(pass 2)
 -par-num-threads=1(pass 1) -ipo(pass 2) -O3(pass 2)
 -no-prec-div(pass 2) -unroll4 -auto-ilp32
 -qopt-mem-layout-trans=3

462.libquantum: basepeak = yes

464.h264ref: -prof-gen(pass 1) -prof-use(pass 2) -xCORE-AVX512(pass 2)
 -par-num-threads=1(pass 1) -ipo(pass 2) -O3(pass 2)
 -no-prec-div(pass 2) -unroll2 -qopt-mem-layout-trans=3

C++ benchmarks:

471.omnetpp: -prof-gen(pass 1) -prof-use(pass 2) -xCORE-AVX512(pass 2)
 -par-num-threads=1(pass 1) -ipo(pass 2) -O3(pass 2)
 -no-prec-div(pass 2)

Continued on next page



SPEC CINT2006 Result

Copyright 2006-2017 Standard Performance Evaluation Corporation

Dell Inc.

SPECint_rate2006 = 1940

PowerEdge R940 (Intel Xeon Gold 5115, 2.40 GHz)

SPECint_rate_base2006 = 1840

CPU2006 license: 55

Test date: Jun-2017

Test sponsor: Dell Inc.

Hardware Availability: Jul-2017

Tested by: Dell Inc.

Software Availability: Nov-2016

Peak Optimization Flags (Continued)

471.omnetpp (continued):

```
-qopt-ra-region-strategy=block
-qopt-mem-layout-trans=3 -Wl,-z,muldefs
-L/sh10.2 -lsmartheap
```

473.astar: basepeak = yes

483.xalancbmk: basepeak = yes

Peak Other Flags

C benchmarks:

403.gcc: -Dalloca=_alloca

The flags files that were used to format this result can be browsed at

<http://www.spec.org/cpu2006/flags/Intel-ic17.0-official-linux64-revF.html>

<http://www.spec.org/cpu2006/flags/Dell-Platform-Flags-PowerEdge14G-revB.html>

You can also download the XML flags sources by saving the following links:

<http://www.spec.org/cpu2006/flags/Intel-ic17.0-official-linux64-revF.xml>

<http://www.spec.org/cpu2006/flags/Dell-Platform-Flags-PowerEdge14G-revB.xml>

SPEC and SPECint are registered trademarks of the Standard Performance Evaluation Corporation. All other brand and product names appearing in this result are trademarks or registered trademarks of their respective holders.

For questions about this result, please contact the tester.
For other inquiries, please contact webmaster@spec.org.

Tested with SPEC CPU2006 v1.2.

Report generated on Wed Jul 12 12:12:13 2017 by SPEC CPU2006 PS/PDF formatter v6932.

Originally published on 11 July 2017.