



# SPEC<sup>®</sup> CFP2006 Result

Copyright 2006-2014 Standard Performance Evaluation Corporation

## HITACHI

SPECfp<sup>®</sup>2006 = 74.4

### Compute Blade 2000 (Intel Xeon E5-2640)

SPECfp\_base2006 = 70.8

CPU2006 license: 35

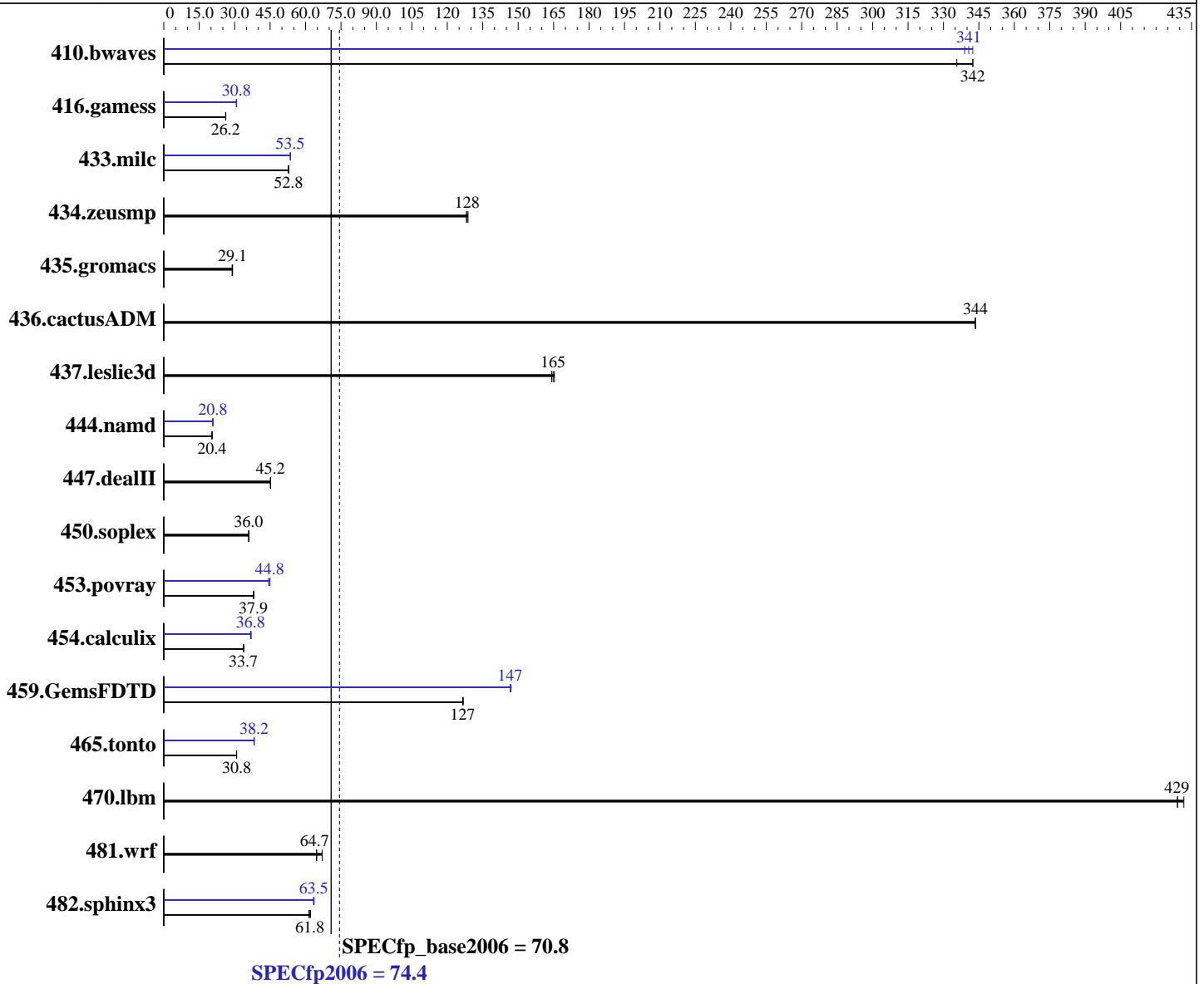
Test sponsor: HITACHI

Tested by: HITACHI

Test date: Apr-2012

Hardware Availability: Apr-2012

Software Availability: Feb-2012



#### Hardware

CPU Name: Intel Xeon E5-2640  
 CPU Characteristics: Intel Turbo Boost Technology up to 3.00 GHz  
 CPU MHz: 2500  
 FPU: Integrated  
 CPU(s) enabled: 12 cores, 2 chips, 6 cores/chip, 2 threads/core  
 CPU(s) orderable: 1, 2 chips  
 Primary Cache: 32 KB I + 32 KB D on chip per core  
 Secondary Cache: 256 KB I+D on chip per core

Continued on next page

#### Software

Operating System: Red Hat Enterprise Linux Server release 6.2, Kernel 2.6.32-220.4.2.el6.x86\_64  
 Compiler: C/C++: Version 12.1.0.225 of Intel C++ Studio XE for Linux;  
 Fortran: Version 12.1.0.225 of Intel Fortran Studio XE for Linux  
 Auto Parallel: Yes  
 File System: ext4  
 System State: Run level 3 (multi-user)

Continued on next page



# SPEC CFP2006 Result

Copyright 2006-2014 Standard Performance Evaluation Corporation

## HITACHI

SPECfp2006 = **74.4**

### Compute Blade 2000 (Intel Xeon E5-2640)

SPECfp\_base2006 = **70.8**

CPU2006 license: 35

Test sponsor: HITACHI

Tested by: HITACHI

Test date: Apr-2012

Hardware Availability: Apr-2012

Software Availability: Feb-2012

L3 Cache: 15 MB I+D on chip per chip  
 Other Cache: None  
 Memory: 128 GB (16 x 8 GB 2Rx4 PC3L-10600R-9, ECC)  
 Disk Subsystem: 2 x 300 GB SAS, 10000 RPM RAID1 configuration  
 Other Hardware: None

Base Pointers: 64-bit  
 Peak Pointers: 32/64-bit  
 Other Software: None

## Results Table

Benchmark	Base						Peak					
	Seconds	Ratio	Seconds	Ratio	Seconds	Ratio	Seconds	Ratio	Seconds	Ratio	Seconds	Ratio
410.bwaves	40.5	336	<b><u>39.7</u></b>	<b><u>342</u></b>	39.7	342	40.1	339	39.7	342	<b><u>39.9</u></b>	<b><u>341</u></b>
416.gamess	<b><u>747</u></b>	<b><u>26.2</u></b>	746	26.3	748	26.2	<b><u>636</u></b>	<b><u>30.8</u></b>	639	30.7	635	30.8
433.milc	174	52.8	<b><u>174</u></b>	<b><u>52.8</u></b>	174	52.8	171	53.5	171	53.6	<b><u>171</u></b>	<b><u>53.5</u></b>
434.zeusmp	71.1	128	<b><u>70.9</u></b>	<b><u>128</u></b>	70.7	129	71.1	128	<b><u>70.9</u></b>	<b><u>128</u></b>	70.7	129
435.gromacs	<b><u>246</u></b>	<b><u>29.1</u></b>	245	29.1	247	28.9	<b><u>246</u></b>	<b><u>29.1</u></b>	245	29.1	247	28.9
436.cactusADM	34.8	344	34.8	344	<b><u>34.8</u></b>	<b><u>344</u></b>	34.8	344	34.8	344	<b><u>34.8</u></b>	<b><u>344</u></b>
437.leslie3d	<b><u>57.0</u></b>	<b><u>165</u></b>	56.8	165	57.2	164	<b><u>57.0</u></b>	<b><u>165</u></b>	56.8	165	57.2	164
444.namd	392	20.4	393	20.4	<b><u>393</u></b>	<b><u>20.4</u></b>	386	20.8	<b><u>386</u></b>	<b><u>20.8</u></b>	386	20.8
447.dealII	254	45.1	253	45.2	<b><u>253</u></b>	<b><u>45.2</u></b>	254	45.1	253	45.2	<b><u>253</u></b>	<b><u>45.2</u></b>
450.soplex	232	35.9	231	36.1	<b><u>232</u></b>	<b><u>36.0</u></b>	232	35.9	231	36.1	<b><u>232</u></b>	<b><u>36.0</u></b>
453.povray	<b><u>140</u></b>	<b><u>37.9</u></b>	139	38.2	141	37.8	<b><u>119</u></b>	<b><u>44.8</u></b>	118	45.0	120	44.3
454.calculix	244	33.9	<b><u>245</u></b>	<b><u>33.7</u></b>	245	33.7	<b><u>224</u></b>	<b><u>36.8</u></b>	223	37.0	225	36.7
459.GemsFDTD	<b><u>83.9</u></b>	<b><u>127</u></b>	83.7	127	83.9	127	<b><u>72.4</u></b>	<b><u>147</u></b>	72.2	147	72.4	147
465.tonto	<b><u>319</u></b>	<b><u>30.8</u></b>	319	30.8	320	30.8	257	38.3	258	38.2	<b><u>257</u></b>	<b><u>38.2</u></b>
470.lbm	31.8	432	32.0	429	<b><u>32.0</u></b>	<b><u>429</u></b>	31.8	432	32.0	429	<b><u>32.0</u></b>	<b><u>429</u></b>
481.wrf	<b><u>173</u></b>	<b><u>64.7</u></b>	173	64.6	167	67.0	<b><u>173</u></b>	<b><u>64.7</u></b>	173	64.6	167	67.0
482.sphinx3	314	62.1	<b><u>315</u></b>	<b><u>61.8</u></b>	317	61.4	<b><u>307</u></b>	<b><u>63.5</u></b>	308	63.4	306	63.6

Results appear in the order in which they were run. Bold underlined text indicates a median measurement.

## Operating System Notes

Stack size set to unlimited using "ulimit -s unlimited"

## Platform Notes

BIOS Settings:

Adjacent Cache Line Prefetch = Enabled

Sysinfo program /home/cpu2006/config/sysinfo.rev6800

\$Rev: 6800 \$ \$Date:: 2011-10-11 #\$ 6f2ebdff5032aaa42e583f96b07f99d3

running on localhost.localdomain Wed Apr 18 08:18:40 2012

This section contains SUT (System Under Test) info as seen by some common utilities. To remove or add to this section, see:

<http://www.spec.org/cpu2006/Docs/config.html#sysinfo>

Continued on next page

Standard Performance Evaluation Corporation

info@spec.org

<http://www.spec.org/>

Page 2



# SPEC CFP2006 Result

Copyright 2006-2014 Standard Performance Evaluation Corporation

## HITACHI

SPECfp2006 = 74.4

### Compute Blade 2000 (Intel Xeon E5-2640)

SPECfp\_base2006 = 70.8

CPU2006 license: 35

Test sponsor: HITACHI

Tested by: HITACHI

Test date: Apr-2012

Hardware Availability: Apr-2012

Software Availability: Feb-2012

## Platform Notes (Continued)

```

From /proc/cpuinfo
model name : Intel(R) Xeon(R) CPU E5-2640 0 @ 2.50GHz
 2 "physical id"s (chips)
24 "processors"
cores, siblings (Caution: counting these is hw and system dependent. The
following excerpts from /proc/cpuinfo might not be reliable. Use with
caution.)
  cpu cores : 6
  siblings  : 12
  physical 0: cores 0 1 2 3 4 5
  physical 1: cores 0 1 2 3 4 5
cache size : 15360 KB

```

```

From /proc/meminfo
MemTotal:      132148312 kB
HugePages_Total:      0
Hugepagesize:    2048 kB

```

```

/usr/bin/lsb_release -d
Red Hat Enterprise Linux Server release 6.2 (Santiago)

```

```

From /etc/*release* /etc/*version*
redhat-release: Red Hat Enterprise Linux Server release 6.2 (Santiago)
system-release: Red Hat Enterprise Linux Server release 6.2 (Santiago)
system-release-cpe: cpe:/o:redhat:enterprise_linux:6server:ga:server

```

```

uname -a:
Linux localhost.localdomain 2.6.32-220.4.2.el6.x86_64 #1 SMP Mon Feb 6
16:39:28 EST 2012 x86_64 x86_64 x86_64 GNU/Linux

```

run-level 3 Apr 18 08:15

(End of data from sysinfo program)

## General Notes

Environment variables set by runspec before the start of the run:

```

KMP_AFFINITY = "granularity=fine,scatter"
LD_LIBRARY_PATH = "/home/cpu2006/libs/32:/home/cpu2006/libs/64"
OMP_NUM_THREADS = "12"

```

Binaries compiled on a system with 1x Core i7-860 CPU + 8GB memory using RHEL5.5  
Transparent Huge Pages disabled with:  
echo never > /sys/kernel/mm/redhat\_transparent\_hugepage/enabled

HITACHI BladeSymphony BS2000 and HITACHI Compute Blade 2000 are electronically equivalent. The results have been measured on a HITACHI BladeSymphony BS2000.



# SPEC CFP2006 Result

Copyright 2006-2014 Standard Performance Evaluation Corporation

**HITACHI**

**SPECfp2006 = 74.4**

**Compute Blade 2000 (Intel Xeon E5-2640)**

**SPECfp\_base2006 = 70.8**

**CPU2006 license:** 35

**Test sponsor:** HITACHI

**Tested by:** HITACHI

**Test date:** Apr-2012

**Hardware Availability:** Apr-2012

**Software Availability:** Feb-2012

## Base Compiler Invocation

C benchmarks:

icc -m64

C++ benchmarks:

icpc -m64

Fortran benchmarks:

ifort -m64

Benchmarks using both Fortran and C:

icc -m64 ifort -m64

## Base Portability Flags

410.bwaves: -DSPEC\_CPU\_LP64  
416.gamess: -DSPEC\_CPU\_LP64  
433.milc: -DSPEC\_CPU\_LP64  
434.zeusmp: -DSPEC\_CPU\_LP64  
435.gromacs: -DSPEC\_CPU\_LP64 -nofor\_main  
436.cactusADM: -DSPEC\_CPU\_LP64 -nofor\_main  
437.leslie3d: -DSPEC\_CPU\_LP64  
444.namd: -DSPEC\_CPU\_LP64  
447.dealII: -DSPEC\_CPU\_LP64  
450.soplex: -DSPEC\_CPU\_LP64  
453.povray: -DSPEC\_CPU\_LP64  
454.calculix: -DSPEC\_CPU\_LP64 -nofor\_main  
459.GemsFDTD: -DSPEC\_CPU\_LP64  
465.tonto: -DSPEC\_CPU\_LP64  
470.lbm: -DSPEC\_CPU\_LP64  
481.wrf: -DSPEC\_CPU\_LP64 -DSPEC\_CPU\_CASE\_FLAG -DSPEC\_CPU\_LINUX  
482.sphinx3: -DSPEC\_CPU\_LP64

## Base Optimization Flags

C benchmarks:

-xAVX -ipo -O3 -no-prec-div -static -parallel -opt-prefetch  
-ansi-alias

C++ benchmarks:

-xAVX -ipo -O3 -no-prec-div -static -opt-prefetch -ansi-alias

Fortran benchmarks:

-xAVX -ipo -O3 -no-prec-div -static -parallel -opt-prefetch

Benchmarks using both Fortran and C:

-xAVX -ipo -O3 -no-prec-div -static -parallel -opt-prefetch  
-ansi-alias



# SPEC CFP2006 Result

Copyright 2006-2014 Standard Performance Evaluation Corporation

**HITACHI**

**SPECfp2006 = 74.4**

**Compute Blade 2000 (Intel Xeon E5-2640)**

**SPECfp\_base2006 = 70.8**

**CPU2006 license:** 35

**Test sponsor:** HITACHI

**Tested by:** HITACHI

**Test date:** Apr-2012

**Hardware Availability:** Apr-2012

**Software Availability:** Feb-2012

## Peak Compiler Invocation

C benchmarks:

icc -m64

C++ benchmarks:

icpc -m64

Fortran benchmarks:

ifort -m64

Benchmarks using both Fortran and C:

icc -m64 ifort -m64

## Peak Portability Flags

Same as Base Portability Flags

## Peak Optimization Flags

C benchmarks:

433.milc: -xAVX(pass 2) -prof-gen(pass 1) -ipo(pass 2) -O3(pass 2)  
-no-prec-div(pass 2) -prof-use(pass 2) -static -auto-ilp32  
-ansi-alias

470.lbm: basepeak = yes

482.sphinx3: -xAVX -ipo -O3 -no-prec-div -unroll2 -ansi-alias  
-parallel

C++ benchmarks:

444.namd: -xAVX(pass 2) -prof-gen(pass 1) -ipo(pass 2) -O3(pass 2)  
-no-prec-div(pass 2) -prof-use(pass 2) -fno-alias  
-auto-ilp32

447.dealIII: basepeak = yes

450.soplex: basepeak = yes

453.povray: -xAVX(pass 2) -prof-gen(pass 1) -ipo(pass 2) -O3(pass 2)  
-no-prec-div(pass 2) -prof-use(pass 2) -unroll4 -ansi-alias

Fortran benchmarks:

410.bwaves: -xAVX -ipo -O3 -no-prec-div -opt-prefetch -parallel  
-static

Continued on next page



# SPEC CFP2006 Result

Copyright 2006-2014 Standard Performance Evaluation Corporation

## HITACHI

**SPECfp2006 = 74.4**

Compute Blade 2000 (Intel Xeon E5-2640)

**SPECfp\_base2006 = 70.8**

CPU2006 license: 35

Test sponsor: HITACHI

Tested by: HITACHI

Test date: Apr-2012

Hardware Availability: Apr-2012

Software Availability: Feb-2012

## Peak Optimization Flags (Continued)

416.gamess: -xAVX(pass 2) -prof-gen(pass 1) -ipo(pass 2) -O3(pass 2)  
-no-prec-div(pass 2) -prof-use(pass 2) -unroll2  
-inline-level=0 -scalar-rep- -static

434.zeusmp: basepeak = yes

437.leslie3d: basepeak = yes

459.GemsFDTD: -xAVX(pass 2) -prof-gen(pass 1) -ipo(pass 2) -O3(pass 2)  
-no-prec-div(pass 2) -prof-use(pass 2) -unroll2  
-inline-level=0 -opt-prefetch -parallel

465.tonto: -xAVX(pass 2) -prof-gen(pass 1) -ipo(pass 2) -O3(pass 2)  
-no-prec-div(pass 2) -prof-use(pass 2) -inline-calloc  
-opt-malloc-options=3 -auto -unroll4

Benchmarks using both Fortran and C:

435.gromacs: basepeak = yes

436.cactusADM: basepeak = yes

454.calculix: -xAVX -ipo -O3 -no-prec-div -auto-ilp32 -ansi-alias

481.wrf: basepeak = yes

The flags files that were used to format this result can be browsed at

<http://www.spec.org/cpu2006/flags/Intel-ic12.1-official-linux64.20111122.html>

<http://www.spec.org/cpu2006/flags/PlatformHitachi-V1.2.html>

You can also download the XML flags sources by saving the following links:

<http://www.spec.org/cpu2006/flags/Intel-ic12.1-official-linux64.20111122.xml>

<http://www.spec.org/cpu2006/flags/PlatformHitachi-V1.2.xml>

SPEC and SPECfp are registered trademarks of the Standard Performance Evaluation Corporation. All other brand and product names appearing in this result are trademarks or registered trademarks of their respective holders.

For questions about this result, please contact the tester.  
For other inquiries, please contact [webmaster@spec.org](mailto:webmaster@spec.org).

Tested with SPEC CPU2006 v1.2.  
Report generated on Thu Jul 24 09:01:19 2014 by SPEC CPU2006 PS/PDF formatter v6932.  
Originally published on 22 May 2012.