



SPEC[®] CFP2006 Result

Copyright 2006-2014 Standard Performance Evaluation Corporation

HITACHI

SPECfp[®]2006 = **73.7**

BladeSymphony BS520H (Intel Xeon E5-2640)

SPECfp_base2006 = **70.2**

CPU2006 license: 35

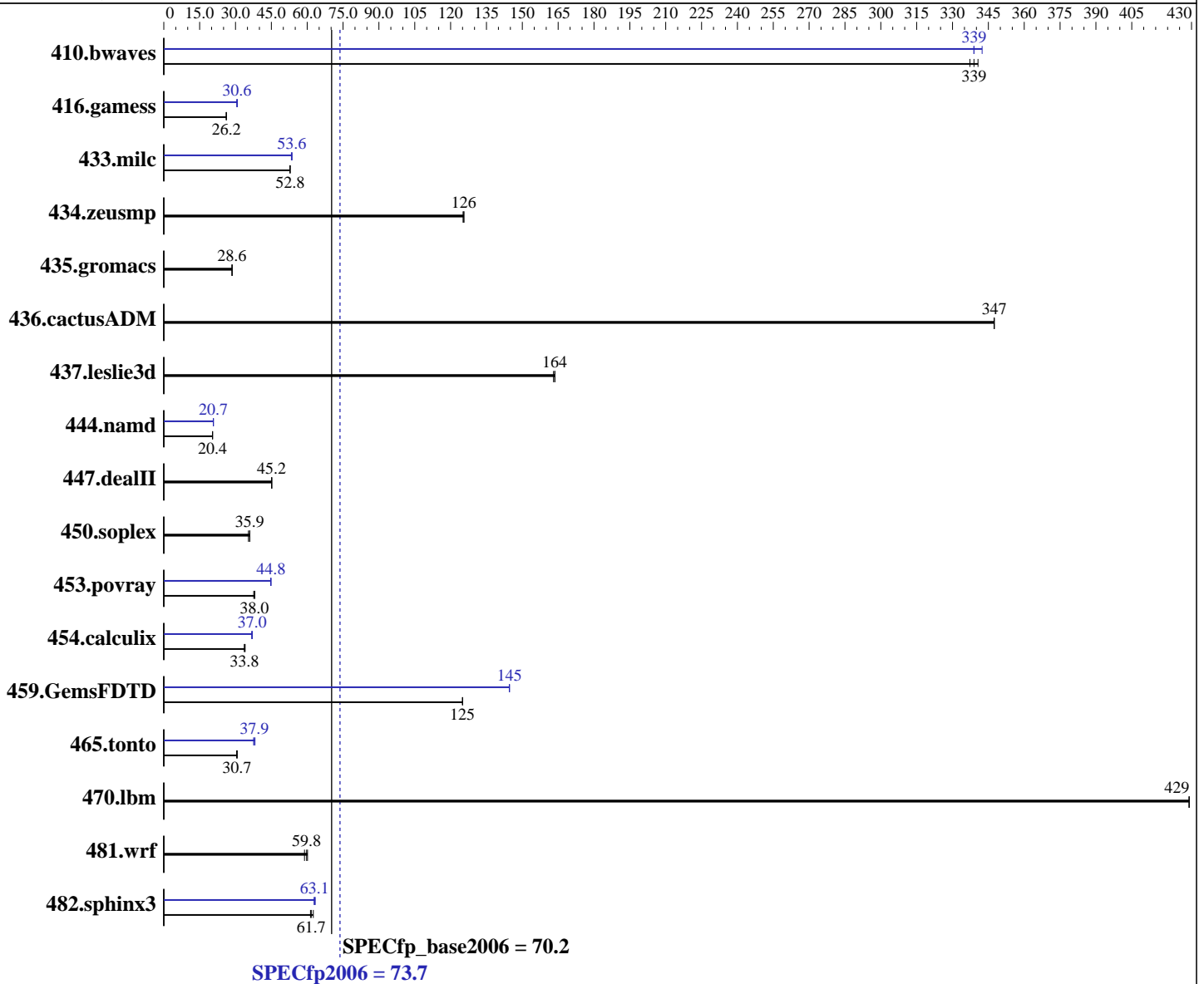
Test date: Apr-2012

Test sponsor: HITACHI

Hardware Availability: Apr-2012

Tested by: HITACHI

Software Availability: Feb-2012



Hardware

CPU Name: Intel Xeon E5-2640
 CPU Characteristics: Intel Turbo Boost Technology up to 3.00 GHz
 CPU MHz: 2500
 FPU: Integrated
 CPU(s) enabled: 12 cores, 2 chips, 6 cores/chip, 2 threads/core
 CPU(s) orderable: 1, 2 chips
 Primary Cache: 32 KB I + 32 KB D on chip per core
 Secondary Cache: 256 KB I+D on chip per core

Continued on next page

Software

Operating System: Red Hat Enterprise Linux Server release 6.2, Kernel 2.6.32-220.4.2.el6.x86_64
 Compiler: C/C++: Version 12.1.0.225 of Intel C++ Studio XE for Linux;
 Fortran: Version 12.1.0.225 of Intel Fortran Studio XE for Linux
 Auto Parallel: Yes
 File System: ext4
 System State: Run level 3 (multi-user)

Continued on next page



SPEC CFP2006 Result

Copyright 2006-2014 Standard Performance Evaluation Corporation

HITACHI

SPECfp2006 = **73.7**

BladeSymphony BS520H (Intel Xeon E5-2640)

SPECfp_base2006 = **70.2**

CPU2006 license: 35

Test sponsor: HITACHI

Tested by: HITACHI

Test date: Apr-2012

Hardware Availability: Apr-2012

Software Availability: Feb-2012

L3 Cache: 15 MB I+D on chip per chip
Other Cache: None
Memory: 128 GB (16 x 8 GB 2Rx4 PC3L-12800R-11, ECC, running at 1333 MHz)
Disk Subsystem: 1 x 146 GB SAS, 15000 RPM
Other Hardware: None

Base Pointers: 64-bit
Peak Pointers: 32/64-bit
Other Software: None

Results Table

Benchmark	Base						Peak					
	Seconds	Ratio	Seconds	Ratio	Seconds	Ratio	Seconds	Ratio	Seconds	Ratio	Seconds	Ratio
410.bwaves	40.3	337	40.1	339	39.9	341	40.1	339	39.7	342	40.1	339
416.gamess	748	26.2	749	26.1	748	26.2	639	30.6	641	30.5	636	30.8
433.milc	174	52.9	174	52.8	174	52.8	171	53.6	172	53.4	171	53.6
434.zeusmp	72.7	125	72.5	126	72.5	126	72.7	125	72.5	126	72.5	126
435.gromacs	250	28.5	250	28.6	250	28.6	250	28.5	250	28.6	250	28.6
436.cactusADM	34.4	347	34.4	347	34.4	347	34.4	347	34.4	347	34.4	347
437.leslie3d	57.7	163	57.5	164	57.5	164	57.7	163	57.5	164	57.5	164
444.namd	393	20.4	393	20.4	393	20.4	387	20.7	387	20.7	387	20.7
447.dealII	254	45.1	253	45.2	253	45.2	254	45.1	253	45.2	253	45.2
450.soplex	232	35.9	232	36.0	236	35.4	232	35.9	232	36.0	236	35.4
453.povray	140	38.0	140	38.1	141	37.6	119	44.8	119	44.7	119	44.9
454.calculix	242	34.0	245	33.7	244	33.8	223	37.0	223	37.0	224	36.8
459.GemsFDTD	84.9	125	84.9	125	84.9	125	73.4	145	73.4	145	73.4	145
465.tonto	323	30.5	320	30.7	321	30.7	258	38.2	262	37.6	260	37.9
470.lbm	32.0	429	32.0	429	32.0	429	32.0	429	32.0	429	32.0	429
481.wrf	186	60.1	190	58.9	187	59.8	186	60.1	190	58.9	187	59.8
482.sphinx3	318	61.4	316	61.7	312	62.6	309	63.1	308	63.4	310	62.9

Results appear in the order in which they were run. Bold underlined text indicates a median measurement.

Operating System Notes

Stack size set to unlimited using "ulimit -s unlimited"

Platform Notes

Sysinfo program /home/cpu2006/config/sysinfo.rev6800
\$Rev: 6800 \$ \$Date:: 2011-10-11 #\$ 6f2ebdff5032aaa42e583f96b07f99d3
running on localhost.localdomain Sun Apr 15 09:33:03 2012

This section contains SUT (System Under Test) info as seen by some common utilities. To remove or add to this section, see:
<http://www.spec.org/cpu2006/Docs/config.html#sysinfo>

From /proc/cpuinfo

Continued on next page



SPEC CFP2006 Result

Copyright 2006-2014 Standard Performance Evaluation Corporation

HITACHI

SPECfp2006 = 73.7

BladeSymphony BS520H (Intel Xeon E5-2640)

SPECfp_base2006 = 70.2

CPU2006 license: 35

Test sponsor: HITACHI

Tested by: HITACHI

Test date: Apr-2012

Hardware Availability: Apr-2012

Software Availability: Feb-2012

Platform Notes (Continued)

```

model name : Intel(R) Xeon(R) CPU E5-2640 0 @ 2.50GHz
  2 "physical id"s (chips)
  24 "processors"
cores, siblings (Caution: counting these is hw and system dependent. The
following excerpts from /proc/cpuinfo might not be reliable. Use with
caution.)
  cpu cores : 6
  siblings  : 12
  physical 0: cores 0 1 2 3 4 5
  physical 1: cores 0 1 2 3 4 5
cache size : 15360 KB

```

```

From /proc/meminfo
MemTotal:      132138076 kB
HugePages_Total:    0
Hugepagesize:    2048 kB

```

```

/usr/bin/lsb_release -d
Red Hat Enterprise Linux Server release 6.2 (Santiago)

```

```

From /etc/*release* /etc/*version*
redhat-release: Red Hat Enterprise Linux Server release 6.2 (Santiago)
system-release: Red Hat Enterprise Linux Server release 6.2 (Santiago)
system-release-cpe: cpe:/o:redhat:enterprise_linux:6server:ga:server

```

```

uname -a:
Linux localhost.localdomain 2.6.32-220.4.2.el6.x86_64 #1 SMP Mon Feb 6
16:39:28 EST 2012 x86_64 x86_64 x86_64 GNU/Linux

```

run-level 3 Apr 13 18:45

(End of data from sysinfo program)

General Notes

Environment variables set by runspec before the start of the run:

```

KMP_AFFINITY = "granularity=fine,scatter"
LD_LIBRARY_PATH = "/home/cpu2006/libs/32:/home/cpu2006/libs/64"
OMP_NUM_THREADS = "12"

```

```

Binaries compiled on a system with 1x Core i7-860 CPU + 8GB
memory using RHEL5.5
Transparent Huge Pages disabled with:
echo never > /sys/kernel/mm/redhat_transparent_hugepage/enabled

```

HITACHI BladeSymphony BS520H and HITACHI Compute Blade 520H are electronically equivalent. The results have been measured on a HITACHI BladeSymphony BS520H.



SPEC CFP2006 Result

Copyright 2006-2014 Standard Performance Evaluation Corporation

HITACHI

SPECfp2006 = 73.7

BladeSymphony BS520H (Intel Xeon E5-2640)

SPECfp_base2006 = 70.2

CPU2006 license: 35

Test sponsor: HITACHI

Tested by: HITACHI

Test date: Apr-2012

Hardware Availability: Apr-2012

Software Availability: Feb-2012

Base Compiler Invocation

C benchmarks:

icc -m64

C++ benchmarks:

icpc -m64

Fortran benchmarks:

ifort -m64

Benchmarks using both Fortran and C:

icc -m64 ifort -m64

Base Portability Flags

410.bwaves: -DSPEC_CPU_LP64
 416.gamess: -DSPEC_CPU_LP64
 433.milc: -DSPEC_CPU_LP64
 434.zeusmp: -DSPEC_CPU_LP64
 435.gromacs: -DSPEC_CPU_LP64 -nofor_main
 436.cactusADM: -DSPEC_CPU_LP64 -nofor_main
 437.leslie3d: -DSPEC_CPU_LP64
 444.namd: -DSPEC_CPU_LP64
 447.dealII: -DSPEC_CPU_LP64
 450.soplex: -DSPEC_CPU_LP64
 453.povray: -DSPEC_CPU_LP64
 454.calculix: -DSPEC_CPU_LP64 -nofor_main
 459.GemsFDTD: -DSPEC_CPU_LP64
 465.tonto: -DSPEC_CPU_LP64
 470.lbm: -DSPEC_CPU_LP64
 481.wrf: -DSPEC_CPU_LP64 -DSPEC_CPU_CASE_FLAG -DSPEC_CPU_LINUX
 482.sphinx3: -DSPEC_CPU_LP64

Base Optimization Flags

C benchmarks:

-xAVX -ipo -O3 -no-prec-div -static -parallel -opt-prefetch
-ansi-alias

C++ benchmarks:

-xAVX -ipo -O3 -no-prec-div -static -opt-prefetch -ansi-alias

Fortran benchmarks:

-xAVX -ipo -O3 -no-prec-div -static -parallel -opt-prefetch

Benchmarks using both Fortran and C:

-xAVX -ipo -O3 -no-prec-div -static -parallel -opt-prefetch
-ansi-alias



SPEC CFP2006 Result

Copyright 2006-2014 Standard Performance Evaluation Corporation

HITACHI

SPECfp2006 = 73.7

BladeSymphony BS520H (Intel Xeon E5-2640)

SPECfp_base2006 = 70.2

CPU2006 license: 35

Test sponsor: HITACHI

Tested by: HITACHI

Test date: Apr-2012

Hardware Availability: Apr-2012

Software Availability: Feb-2012

Peak Compiler Invocation

C benchmarks:

icc -m64

C++ benchmarks:

icpc -m64

Fortran benchmarks:

ifort -m64

Benchmarks using both Fortran and C:

icc -m64 ifort -m64

Peak Portability Flags

Same as Base Portability Flags

Peak Optimization Flags

C benchmarks:

433.milc: -xAVX(pass 2) -prof-gen(pass 1) -ipo(pass 2) -O3(pass 2)
-no-prec-div(pass 2) -prof-use(pass 2) -static -auto-ilp32
-ansi-alias

470.lbm: basepeak = yes

482.sphinx3: -xAVX -ipo -O3 -no-prec-div -unroll2 -ansi-alias
-parallel

C++ benchmarks:

444.namd: -xAVX(pass 2) -prof-gen(pass 1) -ipo(pass 2) -O3(pass 2)
-no-prec-div(pass 2) -prof-use(pass 2) -fno-alias
-auto-ilp32

447.dealIII: basepeak = yes

450.soplex: basepeak = yes

453.povray: -xAVX(pass 2) -prof-gen(pass 1) -ipo(pass 2) -O3(pass 2)
-no-prec-div(pass 2) -prof-use(pass 2) -unroll4 -ansi-alias

Fortran benchmarks:

410.bwaves: -xAVX -ipo -O3 -no-prec-div -opt-prefetch -parallel
-static

Continued on next page



SPEC CFP2006 Result

Copyright 2006-2014 Standard Performance Evaluation Corporation

HITACHI

SPECfp2006 = 73.7

BladeSymphony BS520H (Intel Xeon E5-2640)

SPECfp_base2006 = 70.2

CPU2006 license: 35

Test sponsor: HITACHI

Tested by: HITACHI

Test date: Apr-2012

Hardware Availability: Apr-2012

Software Availability: Feb-2012

Peak Optimization Flags (Continued)

416.gamess: -xAVX(pass 2) -prof-gen(pass 1) -ipo(pass 2) -O3(pass 2)
-no-prec-div(pass 2) -prof-use(pass 2) -unroll2
-inline-level=0 -scalar-rep- -static

434.zeusmp: basepeak = yes

437.leslie3d: basepeak = yes

459.GemsFDTD: -xAVX(pass 2) -prof-gen(pass 1) -ipo(pass 2) -O3(pass 2)
-no-prec-div(pass 2) -prof-use(pass 2) -unroll2
-inline-level=0 -opt-prefetch -parallel

465.tonto: -xAVX(pass 2) -prof-gen(pass 1) -ipo(pass 2) -O3(pass 2)
-no-prec-div(pass 2) -prof-use(pass 2) -inline-calloc
-opt-malloc-options=3 -auto -unroll4

Benchmarks using both Fortran and C:

435.gromacs: basepeak = yes

436.cactusADM: basepeak = yes

454.calculix: -xAVX -ipo -O3 -no-prec-div -auto-ilp32 -ansi-alias

481.wrf: basepeak = yes

The flags files that were used to format this result can be browsed at

<http://www.spec.org/cpu2006/flags/Intel-ic12.1-official-linux64.20111122.html>

<http://www.spec.org/cpu2006/flags/PlatformHitachi-V1.2.html>

You can also download the XML flags sources by saving the following links:

<http://www.spec.org/cpu2006/flags/Intel-ic12.1-official-linux64.20111122.xml>

<http://www.spec.org/cpu2006/flags/PlatformHitachi-V1.2.xml>

SPEC and SPECfp are registered trademarks of the Standard Performance Evaluation Corporation. All other brand and product names appearing in this result are trademarks or registered trademarks of their respective holders.

For questions about this result, please contact the tester.
For other inquiries, please contact webmaster@spec.org.

Tested with SPEC CPU2006 v1.2.
Report generated on Thu Jul 24 08:50:45 2014 by SPEC CPU2006 PS/PDF formatter v6932.
Originally published on 22 May 2012.